

# RED HAT SATELLITE 6

Next-generation Red Hat Enterprise Linux system management

DATASHEET

## RED HAT SATELLITE HIGHLIGHTS

- Efficiently manage the Red Hat infrastructure life-cycle
- Easily create and manage instances on bare metal, virtual machines, and private and public clouds
- Quickly and easily manage configuration across thousands of systems
- Powerfully manage content across RPMs, Red Hat container hosts, containers, and Puppet modules

## OVERVIEW

Red Hat® Satellite is a system management solution that makes Red Hat infrastructure easier to deploy, scale, and manage across physical, virtual, and cloud environments. Satellite helps users provision, configure, and update systems to keep them running efficiently, securely, and in compliance with various standards. By automating most system maintenance tasks, Red Hat Satellite helps organizations increase efficiency, reduce operational costs, and enable IT to better respond to strategic business needs.

## RED HAT SATELLITE 6 CAPABILITIES

Red Hat Satellite automates many tasks related to system management and easily integrates into existing workflow frameworks. The centralized console gives administrators a single location for accessing reports and for provisioning, configuring, and updating systems.

## PROVISIONING

Now administrators can provision on bare metal, virtualized infrastructure, and on public or private cloud environments – all from a centralized console using one simple process.

FEATURE	DESCRIPTION
Provision on bare metal	Quickly provision and update your entire bare-metal infrastructure.
Provision on Red Hat Enterprise Virtualization, Red Hat OpenStack® Platform, VMWare, or Amazon EC2	Easily create and manage instances across virtualized infrastructure or private and public cloud environments
Provision Red Hat Atomic Hosts	Easily deploy your Red Hat Atomic Platform container management host layer
Provision using templates	Create complex Kickstart and Pre-Boot Execution Environment (PXE) scenarios with powerful variables and snippets
Perform system discovery	Discover and search across non-provisioned hosts for rapid deployment, even in environments where Dynamic Host Configuration Protocol (DHCP) and PXE are not available

## CONFIGURATION MANAGEMENT

Analyze and automatically correct configuration drift and control, and enforce the desired host end-state, all from the Red Hat Satellite user interface (UI). This lets you efficiently configure Red Hat Enterprise Linux® systems for greater agility.



facebook.com/redhatinc  
@redhatnews  
linkedin.com/company/red-hat

### LEARN MORE ABOUT RED HAT SATELLITE

Download the latest version of Red Hat Satellite and access documentation in the Red Hat Customer Portal <https://access.redhat.com/products/red-hat-satellite>.

FEATURE	DESCRIPTION
Puppet Forge and GIT integration	Integration for synchronizing Puppet modules helps you to manage, promote, and distribute configuration easily across your environment
Drift remediation	Automatically corrects system state with complete reporting, auditing, and history of changes
Remote execution	Automates workflows and lets users take multiple actions against groups of systems – including rebooting a system after a patch install and conducting rolling upgrades across hundreds of systems

### SOFTWARE MANAGEMENT

Red Hat Satellite helps ensure the systematic application of content (including patches) to deployed systems – on physical, virtual, or cloud infrastructures – in all stages. This ensures greater system consistency and availability and frees IT to respond more quickly to business needs and vulnerabilities.

FEATURE	DESCRIPTION
Content views	Content views are collections of RPMs, Puppet modules, container content, or OSTree content refined with filters and rules. Content views are published and promoted throughout life-cycle environments, enabling end-to-end system management
Red Hat Content Delivery Network (CDN) integration	Integration with the Red Hat CDN lets users control a synchronization of Red Hat content straight from the UI
Federated life-cycle management	Allows distribution and federation of provisioning, configuration, and content delivery via Red Hat Satellite Capsule Server
Streamlined content synchronization	Build systems almost immediately after install while content downloads in the background

### SUBSCRIPTION MANAGEMENT

Easily report and map your Red Hat products to registered systems for end-to-end subscription consumption visibility.

FEATURE	DESCRIPTION
Subscription management	Easily import and manage the distribution of your Red Hat software subscriptions
Built-in reporting engine	Report and map your purchased products to registered systems within Red Hat Satellite for end-to-end subscription usage visibility

## ALREADY A RED HAT SATELLITE 5 CUSTOMER?

Talk with your Red Hat account manager and prepare for your move to Red Hat Satellite 6.

## ARCHITECTURES

Connect your Red Hat managed systems to Red Hat Satellite on-premises, rather than connecting systems directly to a Red Hat hosted solution. With Red Hat Satellite and Red Hat Satellite Capsule Server, managing your growing Linux environment is easier than ever.

### RED HAT SATELLITE SERVER

Red Hat Satellite Server connects directly to Red Hat to download updates and synchronize content, but also has the flexibility to work in a completely disconnected environment. Red Hat Satellite capabilities include:

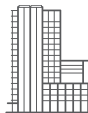
- Multi-tenancy.
- User and group role-based access control (RBAC) with external directories.
- Powerful graphical user interface (GUI), command-line interface (CLI), and application programming interfaces (APIs).
- Advanced subscription management.

### RED HAT SATELLITE CAPSULE SERVER

Red Hat Satellite Capsule Server facilitates content federation and distribution, in addition to other localized services, including Puppet master, DHCP, Domain Name System (DNS), and Trivial File Transfer Protocol (TFTP). The Capsule Server helps you easily scale Red Hat Satellite as the number of managed systems increases in your environment. It connects with Satellite Server to enable localized systems management, including federated services and provisioning.

### RED HAT ENTERPRISE LINUX SMART MANAGEMENT ADD-ON

The Red Hat Enterprise Linux Smart Management Add-On provides the management functionality of Satellite Server for a host – including provisioning, configuration management, and life-cycle management. This add-on is the key to unlock the power of Satellite for all of your hosts and is required for each Red Hat Enterprise Linux subscription that you want to manage.



## ABOUT RED HAT

Red Hat is the world's leading provider of open source software solutions, using a community-powered approach to reliable and high-performing cloud, Linux, middleware, storage, and virtualization technologies. Red Hat also offers award-winning support, training, and consulting services. As a connective hub in a global network of enterprises, partners, and open source communities, Red Hat helps create relevant, innovative technologies that liberate resources for growth and prepare customers for the future of IT.



facebook.com/redhatinc  
@redhatnews  
linkedin.com/company/red-hat

NORTH AMERICA  
1 888 REDHAT1

EUROPE, MIDDLE EAST,  
AND AFRICA  
00800 7334 2835  
europe@redhat.com

ASIA PACIFIC  
+65 6490 4200  
apac@redhat.com

LATIN AMERICA  
+54 11 4329 7300  
info-latam@redhat.com

The OpenStack® Word Mark and OpenStack Logo are either registered trademarks / service marks or trademarks / service marks of the OpenStack Foundation, in the United States and other countries and are used with the OpenStack Foundation's permission. We are not affiliated with, endorsed or sponsored by the OpenStack Foundation or the OpenStack community.

Copyright © 2016 Red Hat, Inc. Red Hat, Red Hat Enterprise Linux, the Shadowman logo, and JBoss are trademarks of Red Hat, Inc., registered in the U.S. and other countries. Linux® is the registered trademark of Linus Torvalds in the U.S. and other countries.