

ABOUT RED HAT

Contact us

REGIONAL CONTACT INFORMATION

Asia Pacific

Sales

Customers in Japan, please use this form to contact sales.

日本の営業へのお問い合わせは、こちらのフォームをご利用ください。

Contact Red Hat sales in Asia Pacific (APAC)

- 📞 Australia and New Zealand: 1-800-REDHAT (Australia toll free) or +61 2 8923 2800
- 📞 Brunei: 866 733 4282 (Local toll free) or +65 6490 4200
- 📞 Cambodia: 866 733 4286 (Local toll free) or +65 6490 4200
- 📞 China: 800 810 2100 (Local toll free), Beijing: +86 10 6533 9300, Shanghai: +86 21 6122 1323
- 📞 Hong Kong: 800 96 5906 (Local toll free) or +85 2 3180 2360
- 📞 India Mumbai: +91 22 39878895
- 📞 Indonesia: 001 803 1 008 3880 (Local toll free) or +65 6490 4200
- 📞 Japan: +81 3 5798 8500
- 📞 Korea: 080-708-0880 (Local toll free) or +82 2 3490 5200 (Option 1)
- 📞 Singapore: +65 6490 4200
- 📞 Taiwan: 0800 666 052 (Local toll free) or +886 2 2313 1568
- 📞 Thailand: 001 800 11 008 3880 (Local toll free) or +65 6490 4200
- 📞 Vietnam: 866 733 4280 (Local toll free) or +65 6490 4200
- 📞 Rest of Asia Pacific: +65 6490 4200
- 📠 +65 490 4201
- ✉ apac@redhat.com

Technical questions

- 📞 +1-919-754-3700

Quantity orders, reseller inquiries, or billing

- 📞 +1-919-754-3700

CONTACT US

FEEDBACK

Provide feedback about this website

Whether you've found a broken link or just can't find what you're looking for, we're happy to take care of the problem.

Contact Red Hat Product Security

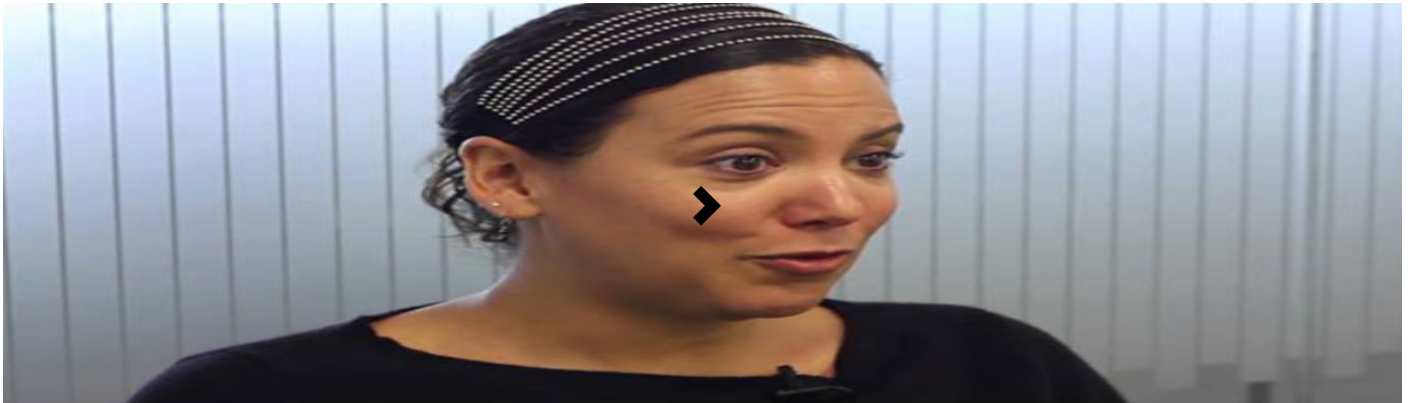
Uncover a serious bug? Let us know so we can quickly find a solution.

CUSTOMER PORTAL

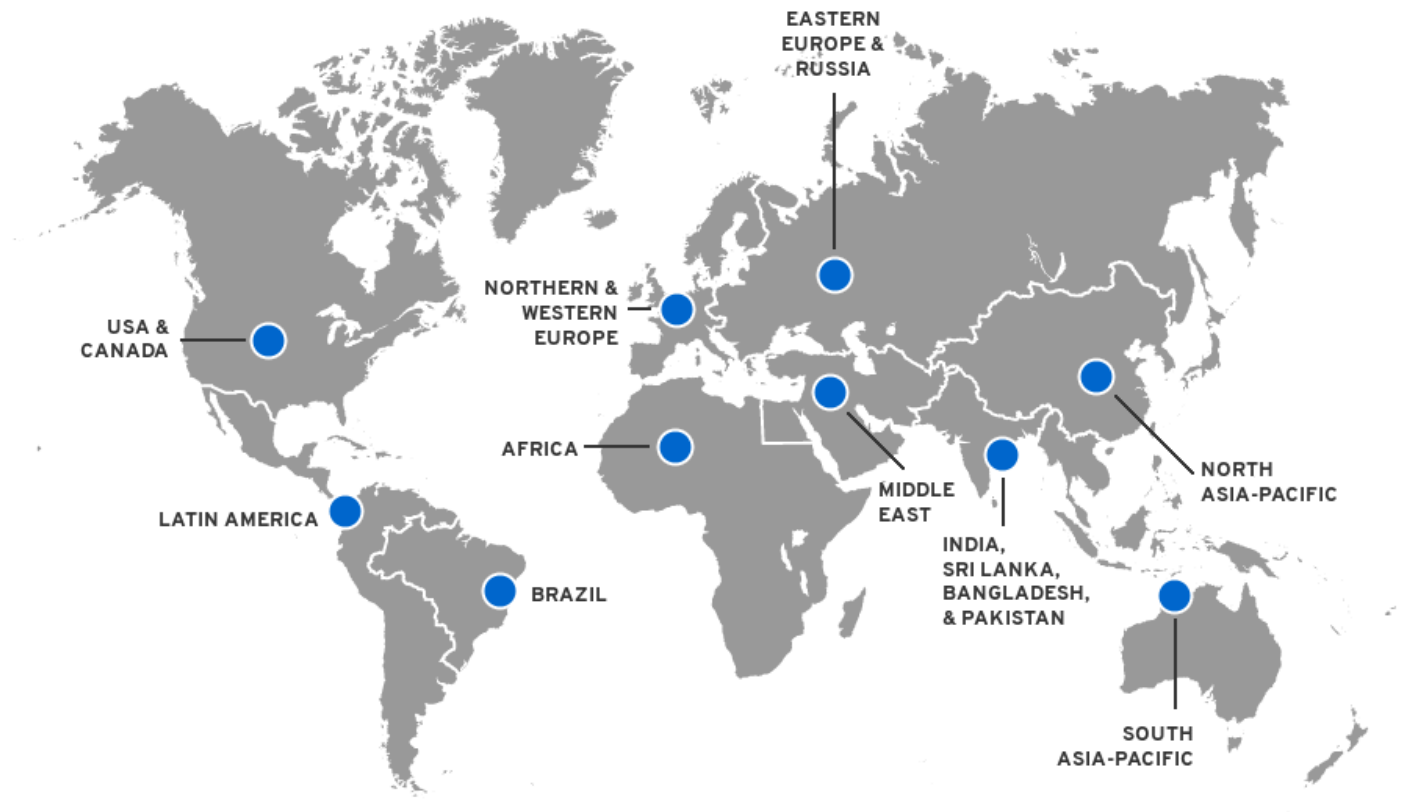
The Red Hat Customer Portal is an award-winning* digital platform that brings Red Hat expertise to your organization through knowledge and support to help you plan, deploy, and maintain your enterprise solutions.

ACCESS THE CUSTOMER PORTAL

* In 2013, the Red Hat Customer Portal was recognized as one of the top support websites—for the third year in a row—by the Association of Support Professionals. *Association of Support Professionals, 2013*



Interactive map can be found at <https://access.redhat.com/site/support/contact/technicalSupport>.



Questions about Red Hat Training or Certification?

[CONTACT US](#)