



# Red Hat Advanced Cluster Management for Kubernetes 2.10

## Governance

Governance





## Legal Notice

Copyright © 2024 Red Hat, Inc.

The text of and illustrations in this document are licensed by Red Hat under a Creative Commons Attribution–Share Alike 3.0 Unported license ("CC-BY-SA"). An explanation of CC-BY-SA is available at

<http://creativecommons.org/licenses/by-sa/3.0/>

. In accordance with CC-BY-SA, if you distribute this document or an adaptation of it, you must provide the URL for the original version.

Red Hat, as the licensor of this document, waives the right to enforce, and agrees not to assert, Section 4d of CC-BY-SA to the fullest extent permitted by applicable law.

Red Hat, Red Hat Enterprise Linux, the Shadowman logo, the Red Hat logo, JBoss, OpenShift, Fedora, the Infinity logo, and RHCE are trademarks of Red Hat, Inc., registered in the United States and other countries.

Linux<sup>®</sup> is the registered trademark of Linus Torvalds in the United States and other countries.

Java<sup>®</sup> is a registered trademark of Oracle and/or its affiliates.

XFS<sup>®</sup> is a trademark of Silicon Graphics International Corp. or its subsidiaries in the United States and/or other countries.

MySQL<sup>®</sup> is a registered trademark of MySQL AB in the United States, the European Union and other countries.

Node.js<sup>®</sup> is an official trademark of Joyent. Red Hat is not formally related to or endorsed by the official Joyent Node.js open source or commercial project.

The OpenStack<sup>®</sup> Word Mark and OpenStack logo are either registered trademarks/service marks or trademarks/service marks of the OpenStack Foundation, in the United States and other countries and are used with the OpenStack Foundation's permission. We are not affiliated with, endorsed or sponsored by the OpenStack Foundation, or the OpenStack community.

All other trademarks are the property of their respective owners.

## Abstract

Read more to learn about the governance policy framework, which helps harden cluster security by using policies.

## Table of Contents

<b>CHAPTER 1. SECURITY OVERVIEW</b> .....	<b>6</b>
1.1. CERTIFICATES INTRODUCTION	6
1.2. CERTIFICATES	6
1.2.1. Red Hat Advanced Cluster Management hub cluster certificates	6
1.2.2. Red Hat Advanced Cluster Management managed certificates	8
1.2.2.1. Managed cluster certificates	8
1.2.3. Additional resources	8
1.2.4. Bringing your own observability Certificate Authority (CA) certificates	8
1.2.4.1. Generating CA certificates by using OpenSSL commands	9
1.2.4.2. Creating the secrets associated with the BYO observability CA certificates	9
1.2.4.3. Additional resources	9
1.2.5. Managing certificates	9
1.2.5.1. Refreshing a Red Hat Advanced Cluster Management webhook certificate	10
1.2.5.2. Replacing certificates for alertmanager route	10
1.2.5.3. Rotating the gatekeeper webhook certificate	10
1.2.5.4. Verifying certificate rotation	11
1.2.5.5. Listing hub cluster managed certificates	11
1.2.5.6. Additional resources	12
<b>CHAPTER 2. GOVERNANCE</b> .....	<b>13</b>
2.1. GOVERNANCE ARCHITECTURE	13
2.1.1. Governance architecture components	15
2.1.2. Additional resources	15
2.2. POLICY OVERVIEW	16
2.2.1. Prerequisites	16
2.2.2. Policy YAML structure	16
2.2.3. Policy YAML table	17
2.2.4. Policy sample file	20
2.2.5. Additional resources	21
2.3. POLICY CONTROLLERS INTRODUCTION	21
2.3.1. Kubernetes configuration policy controller	22
2.3.1.1. Configuration policy sample	22
2.3.1.2. Configuration policy YAML table	23
2.3.1.3. Additional resources	27
2.3.2. Certificate policy controller	27
2.3.2.1. Certificate policy controller YAML structure	28
2.3.2.1.1. Certificate policy controller YAML table	28
2.3.2.2. Certificate policy sample	31
2.3.2.3. Additional resources	31
2.3.3. IAM policy controller (Deprecated)	31
2.3.3.1. IAM policy YAML structure	32
2.3.3.2. IAM policy YAML table	32
2.3.3.3. IAM policy sample	33
2.3.4. Policy set controller	33
2.3.4.1. Policy set YAML structure	34
2.3.4.2. Policy set table	34
2.3.4.3. Policy set sample	35
2.3.4.4. Additional resources	35
2.3.5. Operator policy controller (Technology Preview)	35
2.3.5.1. Prerequisites	36
2.3.5.2. Operator policy YAML table	36

2.3.5.3. Additional resources	37
2.4. POLICY CONTROLLER ADVANCED CONFIGURATION	38
2.4.1. Configure the concurrency of the governance framework	38
2.4.2. Configure the concurrency of the configuration policy controller	39
2.4.3. Configure the rate of requests to the API server	39
2.4.4. Configure debug log	40
2.4.5. Governance metric	41
2.4.5.1. Metric: policy_governance_info	41
2.4.5.2. Metric: config_policies_evaluation_duration_seconds	42
2.4.6. Verify configuration changes	42
2.4.7. Additional resources	42
2.5. POLICY COMPLIANCE HISTORY (TECHNOLOGY PREVIEW)	43
2.5.1. Prerequisites	43
2.5.2. Enable the compliance history API	43
2.5.3. Set the compliance history API URL	45
2.5.3.1. Enable on all managed clusters	46
2.5.3.2. Enable a single managed cluster	46
2.5.4. Additional resource	47
2.6. SUPPORTED POLICIES	47
2.6.1. Table of sample configuration policies	47
2.6.2. Namespace policy	50
2.6.2.1. Namespace policy YAML structure	50
2.6.2.2. Namespace policy YAML table	50
2.6.2.3. Namespace policy sample	51
2.6.3. Pod policy	51
2.6.3.1. Pod policy YAML structure	52
2.6.3.2. Pod policy table	52
2.6.3.3. Pod policy sample	53
2.6.4. Memory usage policy	53
2.6.4.1. Memory usage policy YAML structure	53
2.6.4.2. Memory usage policy table	54
2.6.4.3. Memory usage policy sample	55
2.6.5. Pod security policy (Deprecated)	55
2.6.5.1. Pod security policy YAML structure	55
2.6.5.2. Pod security policy table	56
2.6.5.3. Pod security policy sample	57
2.6.6. Role policy	57
2.6.6.1. Role policy YAML structure	58
2.6.6.2. Role policy table	58
2.6.6.3. Role policy sample	59
2.6.7. Role binding policy	59
2.6.7.1. Role binding policy YAML structure	60
2.6.7.2. Role binding policy table	60
2.6.7.3. Role binding policy sample	61
2.6.8. Security Context Constraints policy	61
2.6.8.1. SCC policy YAML structure	61
2.6.8.2. SCC policy table	62
2.6.8.3. SCC policy sample	63
2.6.9. ETCD encryption policy	63
2.6.9.1. ETCD encryption policy YAML structure	64
2.6.9.2. ETCD encryption policy table	64
2.6.9.3. ETCD encryption policy sample	65
2.6.10. Compliance Operator policy	65

2.6.10.1. Compliance Operator policy overview	65
2.6.10.2. Compliance operator resources	66
2.6.10.3. Additional resources	67
2.6.11. E8 scan policy	67
2.6.11.1. E8 scan policy resources	67
2.6.12. OpenShift CIS scan policy	69
2.6.12.1. OpenShift CIS resources	69
2.6.13. Image vulnerability policy	71
2.6.13.1. Image vulnerability policy YAML structure	71
2.6.13.2. Image vulnerability policy sample	72
2.6.14. Red Hat OpenShift Platform Plus policy set	72
2.6.14.1. Prerequisites	73
2.6.14.2. OpenShift Platform Plus policy set components	73
2.6.14.3. Additional resources	74
2.7. MANAGE GOVERNANCE DASHBOARD	74
2.7.1. Governance page	74
2.7.2. Governance automation configuration	75
2.7.3. Additional resources	76
2.7.4. Configuring Ansible Automation Platform for governance	76
2.7.4.1. Prerequisites	76
2.7.4.2. Creating a policy violation automation from the console	76
2.7.4.3. Creating a policy violation automation from the CLI	77
2.8. TEMPLATE PROCESSING INTRODUCTION	78
2.8.1. Comparison of hub cluster and managed cluster templates	79
2.8.2. Template functions	81
2.8.2.1. fromSecret function	82
2.8.2.2. fromConfigmap function	83
2.8.2.3. fromClusterClaim function	83
2.8.2.4. lookup function	84
2.8.2.5. base64enc function	85
2.8.2.6. base64dec function	86
2.8.2.7. indent function	86
2.8.2.8. autoindent function	87
2.8.2.9. toInt function	87
2.8.2.10. toBool function	88
2.8.2.11. protect function	88
2.8.2.12. toLiteral function	89
2.8.2.13. copySecretData function	89
2.8.2.14. copyConfigMapData function	90
2.8.2.15. Supported Sprig open source functions	90
2.8.2.16. Additional resources	91
2.8.3. Advanced template processing in configuration policies	91
2.8.3.1. Special annotation for reprocessing	91
2.8.3.2. Object template processing	91
2.8.3.3. Bypass template processing	93
2.8.3.4. Additional resources	94
2.9. MANAGING SECURITY POLICIES	94
2.9.1. Creating a security policy	94
2.9.1.1. Creating a security policy from the command line interface	94
2.9.1.1.1. Viewing your security policy from the CLI	95
2.9.1.2. Creating a cluster security policy from the console	96
2.9.1.2.1. Viewing your security policy from the console	97
2.9.1.3. Creating policy sets from the CLI	97

2.9.1.4. Creating policy sets from the console	98
2.9.2. Updating security policies	98
2.9.2.1. Adding a policy to a policy set from the CLI	98
2.9.2.2. Adding a policy to a policy set from the console	98
2.9.2.3. Disabling security policies	98
2.9.3. Deleting a security policy	98
2.9.3.1. Deleting policy sets from the console	99
2.9.4. Cleaning up resources that are created by policies	99
2.9.5. Additional resources	99
2.9.6. Managing configuration policies	100
2.9.6.1. Creating a configuration policy	100
2.9.6.1.1. Creating a configuration policy from the CLI	100
2.9.6.1.2. Viewing your configuration policy from the CLI	101
2.9.6.1.3. Creating a configuration policy from the console	101
2.9.6.1.4. Viewing your configuration policy from the console	102
2.9.6.2. Updating configuration policies	102
2.9.6.2.1. Disabling configuration policies	102
2.9.6.3. Deleting a configuration policy	102
2.9.6.4. Additional resources	102
2.9.7. Managing operator policies in disconnected environments	103
2.9.8. Installing Red Hat OpenShift Platform Plus by using a policy set	103
2.9.8.1. Prerequisites	103
2.9.8.2. Applying Red Hat OpenShift Platform Plus policy set	106
2.9.8.3. Additional resources	106
2.9.9. Installing an operator by using the OperatorPolicy resource (Technology Preview)	106
2.9.9.1. Creating an OperatorPolicy resource to install Quay	106
2.9.9.2. Additional resources	107
2.10. POLICY DEPENDENCIES	107
2.11. SECURE THE HUB CLUSTER	108
<b>CHAPTER 3. GATEKEEPER OPERATOR</b>	<b>109</b>
3.1. INTEGRATING GATEKEEPER CONSTRAINTS AND CONSTRAINT TEMPLATES	109
3.1.1. Additional resources	111
3.2. MANAGING GATEKEEPER OPERATOR POLICIES	111
3.2.1. Installing Gatekeeper using a Gatekeeper operator policy	112
3.2.2. Creating a Gatekeeper policy from the console	112
3.2.2.1. Gatekeeper operator custom resource	112
3.2.2.2. Configuring auditFromCache for sync details	113
3.2.3. Upgrading Gatekeeper and the Gatekeeper operator	114
3.2.4. Updating Gatekeeper operator policy	114
3.2.4.1. Viewing Gatekeeper operator policy from the console	114
3.2.4.2. Disabling Gatekeeper operator policy	115
3.2.5. Deleting Gatekeeper operator policy	115
3.2.6. Uninstalling Gatekeeper policy, Gatekeeper, and Gatekeeper operator policy	115
3.2.7. Additional resources	116
<b>CHAPTER 4. INTEGRATE THIRD-PARTY POLICY CONTROLLERS</b>	<b>117</b>
4.1. POLICY GENERATOR	117
4.1.1. Policy Generator capabilities	117
4.1.2. Policy Generator configuration structure	117
4.1.3. Policy Generator configuration reference table	119
4.1.4. Additional resources	130
4.2. GENERATING A POLICY THAT INSTALLS THE COMPLIANCE OPERATOR	130





# CHAPTER 1. SECURITY OVERVIEW

Manage the security of your Red Hat Advanced Cluster Management for Kubernetes components. Govern your cluster with defined policies and processes to identify and minimize risks. Use policies to define rules and set controls.

**Prerequisite:** You must configure authentication service requirements for Red Hat Advanced Cluster Management for Kubernetes. See [Access control](#) for more information.

Read through the following topics to learn more about securing your cluster:

- [Certificates introduction](#)
- [Governance](#)

## 1.1. CERTIFICATES INTRODUCTION

You can use various certificates to verify authenticity for your Red Hat Advanced Cluster Management for Kubernetes cluster. Additionally, you can bring your own certificates. Continue reading to learn about certificate management.

- [Certificates](#)
- [Bringing your own observability Certificate Authority \(CA\) certificates](#)
- [Managing certificates](#)

## 1.2. CERTIFICATES

All certificates required by services that run on Red Hat Advanced Cluster Management are created during the installation of Red Hat Advanced Cluster Management. View the following list of certificates, which are created and managed by the following components of Red Hat OpenShift Container Platform:

- OpenShift Service Serving Certificates
- Red Hat Advanced Cluster Management webhook controllers
- Kubernetes Certificates API
- OpenShift default ingress

**Required access:** Cluster administrator

Continue reading to learn more about certificate management:

- [Red Hat Advanced Cluster Management hub cluster certificates](#)
- [Red Hat Advanced Cluster Management managed certificates](#)

**Note:** Users are responsible for certificate rotations and updates.

### 1.2.1. Red Hat Advanced Cluster Management hub cluster certificates

OpenShift default ingress certificate is technically a hub cluster certificate. After the Red Hat Advanced Cluster Management installation, observability certificates are created and used by the observability components to provide mutual TLS on the traffic between the hub cluster and managed cluster.

- The **open-cluster-management-observability** namespace contains the following certificates:
  - **observability-server-ca-certs**: Has the CA certificate to sign server-side certificates
  - **observability-client-ca-certs**: Has the CA certificate to sign client-side certificates
  - **observability-server-certs**: Has the server certificate used by the **observability-observatorium-api** deployment
  - **observability-grafana-certs**: Has the client certificate used by the **observability-rbac-query-proxy** deployment
- The **open-cluster-management-addon-observability** namespace contain the following certificates on managed clusters:
  - **observability-managed-cluster-certs**: Has the same server CA certificate as **observability-server-ca-certs** in the hub server
  - **observability-controller-open-cluster-management.io-observability-signer-client-cert**: Has the client certificate used by the **metrics-collector-deployment**

The CA certificates are valid for five years and other certificates are valid for one year. All observability certificates are automatically refreshed upon expiration. View the following list to understand the effects when certificates are automatically renewed:

- Non-CA certificates are renewed automatically when the remaining valid time is no more than 73 days. After the certificate is renewed, the pods in the related deployments restart automatically to use the renewed certificates.
- CA certificates are renewed automatically when the remaining valid time is no more than one year. After the certificate is renewed, the old CA is not deleted but co-exist with the renewed ones. Both old and renewed certificates are used by related deployments, and continue to work. The old CA certificates are deleted when they expire.
- When a certificate is renewed, the traffic between the hub cluster and managed cluster is not interrupted.

View the following Red Hat Advanced Cluster Management hub cluster certificates table:

**Table 1.1. Red Hat Advanced Cluster Management hub cluster certificates**

Namespace	Secret name	Pod label	
open-cluster-management	channels-apps-open-cluster-management-webhook-svc-ca	app=multicluster-operators-channel	open-cluster-management
channels-apps-open-cluster-management-webhook-svc-signed-ca	app=multicluster-operators-channel	open-cluster-management	multicluster-operators-application-svc-ca

Namespace	Secret name	Pod label	
app=multicluster-operators-application	open-cluster-management	multicluster-operators-application-svc-signed-ca	app=multicluster-operators-application
open-cluster-management-hub	registration-webhook-serving-cert signer-secret	Not required	open-cluster-management-hub

## 1.2.2. Red Hat Advanced Cluster Management managed certificates

View the following table for a summarized list of the component pods that contain Red Hat Advanced Cluster Management managed certificates and the related secrets:

**Table 1.2. Pods that contain Red Hat Advanced Cluster Management managed certificates**

Namespace	Secret name (if applicable)
open-cluster-management-agent-addon	cluster-proxy-open-cluster-management.io-proxy-agent-signer-client-cert
open-cluster-management-agent-addon	cluster-proxy-service-proxy-server-certificates

### 1.2.2.1. Managed cluster certificates

You can use certificates to authenticate managed clusters with the hub cluster. Therefore, it is important to be aware of troubleshooting scenarios associated with these certificates.

The managed cluster certificates are refreshed automatically.

### 1.2.3. Additional resources

- Use the certificate policy controller to create and manage certificate policies on managed clusters. See [Certificate policy controller](#) for more details.
- See [Using custom CA certificates for a secure HTTPS connection](#) for more details about securely connecting to a privately-hosted Git server with SSL/TLS certificates.
- See [OpenShift Service Serving Certificates](#) for more details.
- The OpenShift Container Platform default ingress is a hub cluster certificate. See [Replacing the default ingress certificate](#) for more details.
- See [Certificates introduction](#) for topics.

### 1.2.4. Bringing your own observability Certificate Authority (CA) certificates

When you install Red Hat Advanced Cluster Management for Kubernetes, only Certificate Authority (CA) certificates for observability are provided by default. If you do not want to use the default

observability CA certificates generated by Red Hat Advanced Cluster Management, you can choose to bring your own observability CA certificates before you enable observability.

### 1.2.4.1. Generating CA certificates by using OpenSSL commands

Observability requires two CA certificates, one for the server-side and the other is for the client-side.

- Generate your CA RSA private keys with the following commands:

```
openssl genrsa -out serverCAKey.pem 2048
openssl genrsa -out clientCAKey.pem 2048
```

- Generate the self-signed CA certificates using the private keys. Run the following commands:

```
openssl req -x509 -sha256 -new -nodes -key serverCAKey.pem -days 1825 -out
serverCACert.pem
openssl req -x509 -sha256 -new -nodes -key clientCAKey.pem -days 1825 -out
clientCACert.pem
```

### 1.2.4.2. Creating the secrets associated with the BYO observability CA certificates

Complete the following steps to create the secrets:

1. Create the **observability-server-ca-certs** secret by using your certificate and private key. Run the following command:

```
oc -n open-cluster-management-observability create secret tls observability-server-ca-certs -
-cert ./serverCACert.pem --key ./serverCAKey.pem
```

2. Create the **observability-client-ca-certs** secret by using your certificate and private key. Run the following command:

```
oc -n open-cluster-management-observability create secret tls observability-client-ca-certs --
cert ./clientCACert.pem --key ./clientCAKey.pem
```

### 1.2.4.3. Additional resources

- See [Managing certificates](#).
- Return to the [Certificates introduction](#).

## 1.2.5. Managing certificates

Continue reading for information about how to refresh, replace, rotate, and list certificates.

- [Refreshing a Red Hat Advanced Cluster Management webhook certificate](#)
- [Replacing certificates for alertmanager route](#)
- [Rotating the Gatekeeper webhook certificate](#)
- [Verifying certificate rotation](#)
- [Listing hub cluster managed certificates](#)

### 1.2.5.1. Refreshing a Red Hat Advanced Cluster Management webhook certificate

You can refresh Red Hat Advanced Cluster Management managed certificates, which are certificates that are created and managed by Red Hat Advanced Cluster Management services.

Complete the following steps to refresh certificates managed by Red Hat Advanced Cluster Management:

1. Delete the secret that is associated with the Red Hat Advanced Cluster Management managed certificate by running the following command:

```
oc delete secret -n <namespace> <secret> 1
```

- 1 Replace **<namespace>** and **<secret>** with the values that you want to use.

2. Restart the services that are associated with the Red Hat Advanced Cluster Management managed certificate(s) by running the following command:

```
oc delete pod -n <namespace> -l <pod-label> 1
```

- 1 Replace **<namespace>** and **<pod-label>** with the values from the *Red Hat Advanced Cluster Management managed cluster certificates* table.

**Note:** If a **pod-label** is not specified, there is no service that must be restarted. The secret is recreated and used automatically.

### 1.2.5.2. Replacing certificates for alertmanager route

You can replace alertmanager certificates by updating the alertmanager route, if you do not want to use the OpenShift default ingress certificate. Complete the following steps:

1. Examine the observability certificate with the following command:

```
openssl x509 -noout -text -in ./observability.crt
```

2. Change the common name (**CN**) on the certificate to **alertmanager**.
3. Change the SAN in the **csr.cnf** configuration file with the hostname for your alertmanager route.
4. Create the two following secrets in the **open-cluster-management-observability** namespace. Run the following commands:

```
oc -n open-cluster-management-observability create secret tls alertmanager-byo-ca --cert ./ca.crt --key ./ca.key
```

```
oc -n open-cluster-management-observability create secret tls alertmanager-byo-cert --cert ./ingress.crt --key ./ingress.key
```

### 1.2.5.3. Rotating the gatekeeper webhook certificate

Complete the following steps to rotate the gatekeeper webhook certificate:

1. Edit the secret that contains the certificate with the following command:

```
oc edit secret -n openshift-gatekeeper-system gatekeeper-webhook-server-cert
```

2. Delete the following content in the **data** section: **ca.crt**, **ca.key**, **tls.crt**, and **tls.key**.
3. Restart the gatekeeper webhook service by deleting the **gatekeeper-controller-manager** pods with the following command:

```
oc delete pod -n openshift-gatekeeper-system -l control-plane=controller-manager
```

The gatekeeper webhook certificate is rotated.

#### 1.2.5.4. Verifying certificate rotation

Verify that your certificates are rotated using the following steps:

1. Identify the secret that you want to check.
2. Check the **tls.crt** key to verify that a certificate is available.
3. Display the certificate information by using the following command:

```
oc get secret <your-secret-name> -n open-cluster-management -o jsonpath='{.data.tls.crt}' | base64 -d | openssl x509 -text -noout
```

Replace **<your-secret-name>** with the name of secret that you are verifying. If it is necessary, also update the namespace and JSON path.

4. Check the **Validity** details in the output. View the following **Validity** example:

```
Validity
  Not Before: Jul 13 15:17:50 2023 GMT 1
  Not After : Jul 12 15:17:50 2024 GMT 2
```

**1** The **Not Before** value is the date and time that you rotated your certificate.

**2** The **Not After** value is the date and time for the certificate expiration.

#### 1.2.5.5. Listing hub cluster managed certificates

You can view a list of hub cluster managed certificates that use OpenShift Service Serving Certificates service internally. Run the following command to list the certificates:

```
for ns in multicluster-engine open-cluster-management ; do echo "$ns:" ; oc get secret -n $ns -o custom-columns=Name:.metadata.name,Expiration:.metadata.annotations.service\\.beta\\.openshift\\.io/expiry | grep -v '<none>' ; echo "" ; done
```

For more information, see *OpenShift Service Serving Certificates* in the *Additional resources* section.

**Note:** If observability is enabled, there are additional namespaces where certificates are created.

### 1.2.5.6. Additional resources

- [OpenShift Service Serving Certificates](#)
- [Certificates introduction](#)



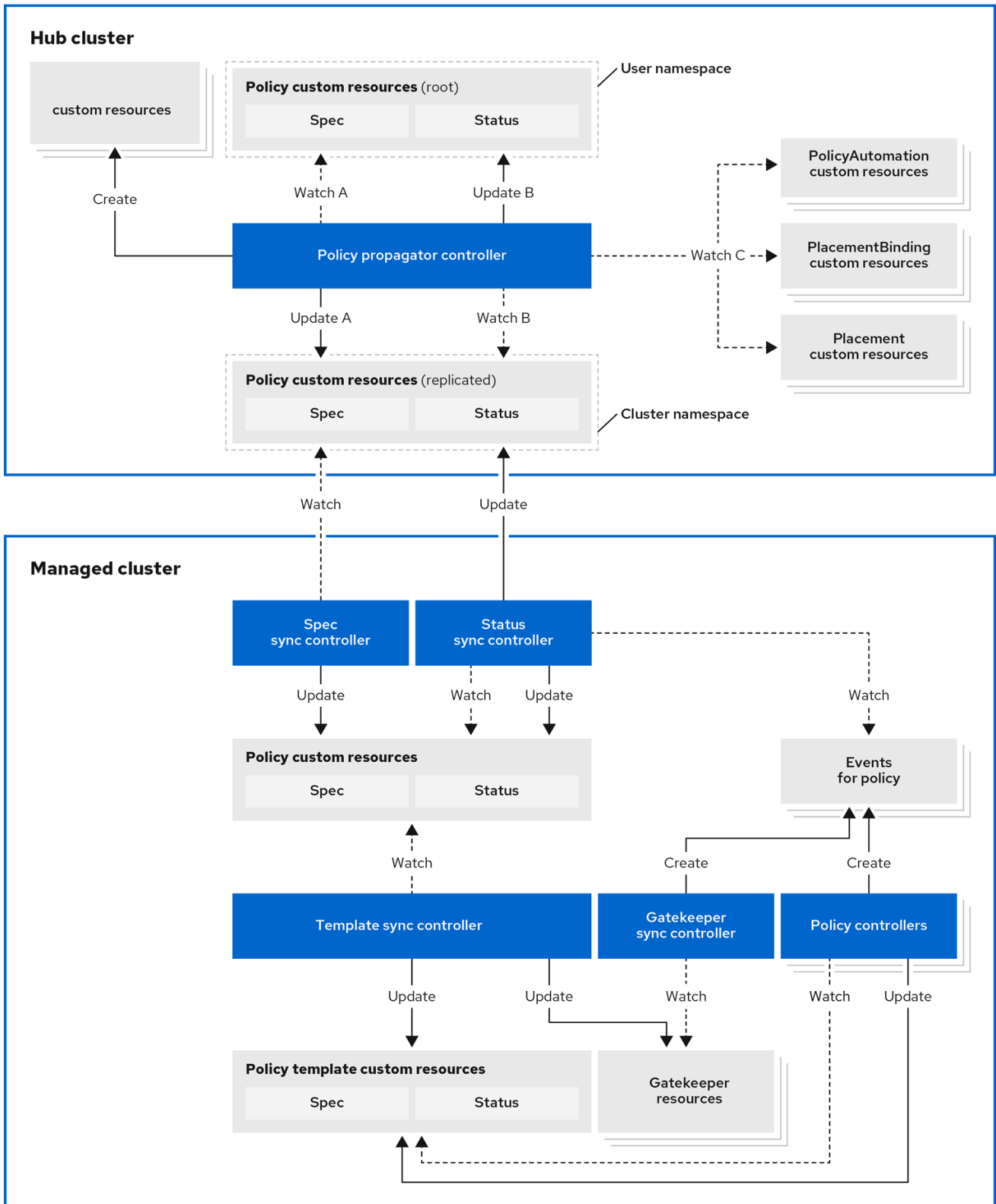
## CHAPTER 2. GOVERNANCE

Enterprises must meet internal standards for software engineering, secure engineering, resiliency, security, and regulatory compliance for workloads hosted on private, multi and hybrid clouds. Red Hat Advanced Cluster Management for Kubernetes governance provides an extensible policy framework for enterprises to introduce their own security policies. Continue reading the related topics of the Red Hat Advanced Cluster Management governance framework:

- [Governance architecture](#)
- [Policy overview](#)
- [Policy controllers introduction](#)
- [Policy controller advanced configuration](#)
- [Policy compliance history \(Technology Preview\)](#)
- [Supported policies](#)
- [Policy dependencies](#)
- [Manage Governance dashboard](#)
- [Secure the hub cluster](#)
- [Integrate third-party policy controllers](#)

### 2.1. GOVERNANCE ARCHITECTURE

Enhance the security for your cluster with the Red Hat Advanced Cluster Management for Kubernetes governance lifecycle. The product governance lifecycle is based on using supported policies, processes, and procedures to manage security and compliance from a central interface page. View the following diagram of the governance architecture:



352\_RHACM\_0723

View the following component descriptions for the governance architecture diagram:

- Policy propagator controller:** Runs on the Red Hat Advanced Cluster Management hub cluster and generates the replicated policies in the managed cluster namespaces on the hub based on the placements bound to the root policy. It also aggregates compliance status from replicated policies to the root policy status and initiates automations based on policy automations bound to the root policy.

- **Governance policy add-on controller:** Runs on the Red Hat Advanced Cluster Management hub cluster and manages the installation of policy controllers on managed clusters.
- **Governance policy framework:** The previous image represents the framework that runs as the **governance-policy-framework** pod on managed clusters and contains the following controllers:
  - **Spec sync controller:** Synchronizes the replicated policy in the managed cluster namespace on the hub cluster to the managed cluster namespace on the managed cluster.
  - **Status sync controller:** Records compliance events from policy controllers in the replicated policies on the hub and managed cluster. The status only contains updates that are relevant to the current policy and does not consider past statuses if the policy is deleted and recreated.
  - **Template sync controller:** Creates, updates, and deletes objects in the managed cluster namespace on the managed cluster based on the definitions from the replicated policy **spec.policy-templates** entries.
  - **Gatekeeper sync controller:** Records Gatekeeper constraint audit results as compliance events in corresponding Red Hat Advanced Cluster Management policies.

### 2.1.1. Governance architecture components

The governance architecture also include following components:

- **Governance dashboard:** Provides a summary of your cloud governance and risk details, which include policy and cluster violations. Refer to the *Manage Governance dashboard* section to learn about the structure of an Red Hat Advanced Cluster Management for Kubernetes policy framework, and how to use the Red Hat Advanced Cluster Management for Kubernetes *Governance* dashboard.

**Notes:**

- When a policy is propagated to a managed cluster, it is first replicated to the cluster namespace on the hub cluster, and is named and labeled using **namespaceName.policyName**. When you create a policy, make sure that the length of the **namespaceName.policyName** does not exceed 63 characters due to the Kubernetes length limit for label values.
- When you search for a policy in the hub cluster, you might also receive the name of the replicated policy in the managed cluster namespace. For example, if you search for **policy-dhaz-cert** in the **default** namespace, the following policy name from the hub cluster might also appear in the managed cluster namespace: **default.policy-dhaz-cert**.
- **Policy-based governance framework:** Supports policy creation and deployment to various managed clusters based on attributes associated with clusters, such as a geographical region. There are examples of the predefined policies and instructions on deploying policies to your cluster in the *open source community*. Additionally, when policies are violated, automations can be configured to run and take any action that the user chooses.
- **Open source community:** Supports community contributions with a foundation of the Red Hat Advanced Cluster Management policy framework. Policy controllers and third-party policies are also a part of the [open-cluster-management/policy-collection repository](#). You can contribute and deploy policies using GitOps.

### 2.1.2. Additional resources

- See [Policy controllers introduction](#).
- See [Deploying policies by using GitOps](#).

## 2.2. POLICY OVERVIEW

To create and manage policies, gain visibility and remediate configurations to meet standards, use the Red Hat Advanced Cluster Management for Kubernetes security policy framework. Kubernetes custom resource definition instances are used to create policies. You can create a policy in any namespace on the hub cluster except the managed cluster namespaces. If you create a policy in a managed cluster namespace, it is deleted by Red Hat Advanced Cluster Management. Each Red Hat Advanced Cluster Management policy can be organized into one or more policy template definitions. For more details about the policy elements, view the *Policy YAML table* section on this page.

You are responsible for ensuring that the managed cloud environment meets internal enterprise security standards for software engineering, secure engineering, resiliency, security, and regulatory compliance for workloads hosted on Kubernetes clusters.

### 2.2.1. Prerequisites

- Each policy requires a **Placement** resource that defines the clusters that the policy document is applied to, and a **PlacementBinding** resource that binds the Red Hat Advanced Cluster Management for Kubernetes policy. For more on how to define a **Placement** resource see [Placement overview](#) in the Cluster lifecycle documentation.
- You must create the **PlacementBinding** to bind your policy with a **Placement** in order to propagate the policy to the managed clusters.
- To use a **Placement** resource, you must bind a **ManagedClusterSet** resource to the namespace of the **Placement** resource with a **ManagedClusterSetBinding** resource. Refer to [Creating a ManagedClusterSetBinding resource](#) for additional details.
- When you create a **Placement** resource for your policy from the console, the status of the placement toleration is automatically added to the **Placement** resource. See [Adding a toleration to a placement](#) for more details.

**Best practice:** Use the command line interface (CLI) to make updates to the policies when you use the **Placement** resource.

Learn more details about the policy components in the following sections:

- [Policy YAML structure](#)
- [Policy YAML table](#)
- [Policy sample file](#)

### 2.2.2. Policy YAML structure

When you create a policy, you must include required parameter fields and values. Depending on your policy controller, you might need to include other optional fields and values. View the following YAML structure for policies:

```
apiVersion: policy.open-cluster-management.io/v1
kind: Policy
```

```

metadata:
  name:
  annotations:
    policy.open-cluster-management.io/standards:
    policy.open-cluster-management.io/categories:
    policy.open-cluster-management.io/controls:
    policy.open-cluster-management.io/description:
spec:
  disabled:
  remediationAction:
  dependencies:
  - apiVersion: policy.open-cluster-management.io/v1
    compliance:
    kind: Policy
    name:
    namespace:
  policy-templates:
  - objectDefinition:
    apiVersion:
    kind:
    metadata:
      name:
    spec:
---
apiVersion: policy.open-cluster-management.io/v1
kind: PlacementBinding
metadata:
bindingOverrides:
  remediationAction:
subFilter:
  name:
placementRef:
  name:
  kind: Placement
  apiGroup: cluster.open-cluster-management.io
subjects:
- name:
  kind:
  apiGroup:
---
apiVersion: cluster.open-cluster-management.io/v1beta1
kind: Placement
metadata:
  name:
spec:

```

### 2.2.3. Policy YAML table

View the following table for policy parameter descriptions:

**Table 2.1. Parameter table**

Field	Optional or required	Description
<b>apiVersion</b>	Required	Set the value to <b>policy.open-cluster-management.io/v1</b> .
<b>kind</b>	Required	Set the value to <b>Policy</b> to indicate the type of policy.
<b>metadata.name</b>	Required	The name for identifying the policy resource.
<b>metadata.annotations</b>	Optional	Used to specify a set of security details that describes the set of standards the policy is trying to validate. All annotations documented here are represented as a string that contains a comma-separated list.  <b>Note:</b> You can view policy violations based on the standards and categories that you define for your policy on the <i>Policies</i> page, from the console.
<b>bindingOverrides.remediationAction</b>	Optional	When this parameter is set to <b>enforce</b> , it provides a way for you to override the remediation action of the related <b>PlacementBinding</b> resources for configuration policies. The default value is <b>null</b> .
<b>subFilter</b>	Optional	Set this parameter to <b>restriction</b> to select a subset of bound policies. The default value is <b>null</b> .
<b>annotations.policy.open-cluster-management.io/standards</b>	Optional	The name or names of security standards the policy is related to. For example, National Institute of Standards and Technology (NIST) and Payment Card Industry (PCI).

Field	Optional or required	Description
<b>annotations.policy.open-cluster-management.io/categories</b>	Optional	A security control category represent specific requirements for one or more standards. For example, a System and Information Integrity category might indicate that your policy contains a data transfer protocol to protect personal information, as required by the HIPAA and PCI standards.
<b>annotations.policy.open-cluster-management.io/controls</b>	Optional	The name of the security control that is being checked. For example, Access Control or System and Information Integrity.
<b>spec.disabled</b>	Required	Set the value to <b>true</b> or <b>false</b> . The <b>disabled</b> parameter provides the ability to enable and disable your policies.
<b>spec.remediationAction</b>	Optional	Specifies the remediation of your policy. The parameter values are <b>enforce</b> and <b>inform</b> . If specified, the <b>spec.remediationAction</b> value that is defined overrides any <b>remediationAction</b> parameter defined in the child policies in the <b>policy-templates</b> section. For example, if the <b>spec.remediationAction</b> value is set to <b>enforce</b> , then the <b>remediationAction</b> in the <b>policy-templates</b> section is set to <b>enforce</b> during runtime.
<b>spec.copyPolicyMetadata</b>	Optional	Specifies whether the labels and annotations of a policy should be copied when replicating the policy to a managed cluster. If you set to <b>true</b> , all of the labels and annotations of the policy are copied to the replicated policy. If you set to <b>false</b> , only the policy framework specific policy labels and annotations are copied to the replicated policy.

Field	Optional or required	Description
<b>spec.dependencies</b>	Optional	Used to create a list of dependency objects detailed with extra considerations for compliance.
<b>spec.policy-templates</b>	Required	Used to create one or more policies to apply to a managed cluster.
<b>spec.policy-templates.extraDependencies</b>	Optional	For policy templates, this is used to create a list of dependency objects detailed with extra considerations for compliance.
<b>spec.policy-templates.ignorePending</b>	Optional	Used to mark a policy template as compliant until the dependency criteria is verified.  <b>Important:</b> Some policy kinds might not support the enforce feature.

## 2.2.4. Policy sample file

View the following YAML file which is a configuration policy for roles:

```

apiVersion: policy.open-cluster-management.io/v1
kind: Policy
metadata:
  name: policy-role
  annotations:
    policy.open-cluster-management.io/standards: NIST SP 800-53
    policy.open-cluster-management.io/categories: AC Access Control
    policy.open-cluster-management.io/controls: AC-3 Access Enforcement
    policy.open-cluster-management.io/description:
spec:
  remediationAction: inform
  disabled: false
  policy-templates:
  - objectDefinition:
      apiVersion: policy.open-cluster-management.io/v1
      kind: ConfigurationPolicy
      metadata:
        name: policy-role-example
      spec:
        remediationAction: inform # the policy-template spec.remediationAction is overridden by the
preceding parameter value for spec.remediationAction.
        severity: high
        namespaceSelector:
          include: ["default"]
        object-templates:

```



```

- complianceType: mustonlyhave # role definition should exact match
objectDefinition:
  apiVersion: rbac.authorization.k8s.io/v1
  kind: Role
  metadata:
    name: sample-role
  rules:
    - apiGroups: ["extensions", "apps"]
      resources: ["deployments"]
      verbs: ["get", "list", "watch", "delete", "patch"]
---
apiVersion: policy.open-cluster-management.io/v1
kind: PlacementBinding
metadata:
  name: binding-policy-role
placementRef:
  name: placement-policy-role
  kind: Placement
  apiGroup: cluster.open-cluster-management.io
subjects:
- name: policy-role
  kind: Policy
  apiGroup: policy.open-cluster-management.io
---
apiVersion: cluster.open-cluster-management.io/v1beta1
kind: Placement
metadata:
  name: placement-policy-role
spec:
  predicates:
    - requiredClusterSelector:
        labelSelector:
          matchExpressions:
            - {key: environment, operator: In, values: ["dev"]}

```

### 2.2.5. Additional resources

- Refer to [Policy controllers](#).
- See [Managing security policies](#) to create and update a policy. You can also enable and update Red Hat Advanced Cluster Management policy controllers to validate the compliance of your policies.
- Return to the [Governance](#) documentation.

## 2.3. POLICY CONTROLLERS INTRODUCTION

Policy controllers monitor and report whether your cluster is compliant with a policy. Use the Red Hat Advanced Cluster Management for Kubernetes policy framework by using the supported policy templates to apply policies managed by these controllers. The policy controllers manage Kubernetes custom resource definition instances.

Policy controllers check for policy violations, and can make the cluster status compliant if the controller supports the enforcement feature. View the following topics to learn more about the following Red Hat Advanced Cluster Management for Kubernetes policy controllers:

- [Kubernetes configuration policy controller](#)
- [Certificate policy controller](#)
- [IAM policy controller \(Deprecated\)](#)
- [Policy set controller](#)
- [Operator policy controller \(Technology Preview\)](#)

**Important:** Only the configuration policy controller policies support the **enforce** feature. You must manually remediate policies, where the policy controller does not support the **enforce** feature.

### 2.3.1. Kubernetes configuration policy controller

The configuration policy controller can be used to configure any Kubernetes resource and apply security policies across your clusters. The configuration policy is provided in the **policy-templates** field of the policy on the hub cluster, and is propagated to the selected managed clusters by the governance framework.

A Kubernetes object is defined (in whole or in part) in the **object-templates** array in the configuration policy, indicating to the configuration policy controller of the fields to compare with objects on the managed cluster. The configuration policy controller communicates with the local Kubernetes API server to get the list of your configurations that are in your cluster.

The configuration policy controller is created on the managed cluster during installation. The configuration policy controller supports the **enforce** and the **InformOnly** feature to remediate when the configuration policy is non-compliant.

When the **remediationAction** for the configuration policy is set to **enforce**, the controller applies the specified configuration to the target managed cluster.

When the **remediationAction** for the configuration policy is set to **InformOnly**, the parent policy does not enforce the configuration policy, even if the **remediationAction** in the parent policy is set to **enforce**.

**Note:** Configuration policies that specify an object without a name can only be **inform**.

You can also use templated values within configuration policies. For more information, see *Template processing*.

If you have existing Kubernetes manifests that you want to put in a policy, the Policy Generator is a useful tool to accomplish this.

#### 2.3.1.1. Configuration policy sample

```
apiVersion: policy.open-cluster-management.io/v1
kind: ConfigurationPolicy
metadata:
  name: policy-config
spec:
  namespaceSelector:
    include: ["default"]
    exclude: []
  matchExpressions: []
  matchLabels: {}
```

```

remediationAction: inform
severity: low
evaluationInterval:
  compliant:
  noncompliant:
object-templates:
- complianceType: musthave
  objectDefinition:
    apiVersion: v1
    kind: Pod
    metadata:
      name: pod
    spec:
      containers:
      - image: pod-image
        name: pod-name
        ports:
        - containerPort: 80
- complianceType: musthave
  objectDefinition:
    apiVersion: v1
    kind: ConfigMap
    metadata:
      name: myconfig
      namespace: default
    data:
      testData: hello
    spec:
...

```

### 2.3.1.2. Configuration policy YAML table

Table 2.2. Parameter table

Field	Optional or required	Description
<b>apiVersion</b>	Required	Set the value to <b>policy.open-cluster-management.io/v1</b> .
<b>kind</b>	Required	Set the value to <b>ConfigurationPolicy</b> to indicate the type of policy.
<b>metadata.name</b>	Required	The name of the policy.

Field	Optional or required	Description
<b>spec.namespaceSelector</b>	Required for namespaced objects that do not have a namespace specified	Determines namespaces in the managed cluster that the object is applied to. The <b>include</b> and <b>exclude</b> parameters accept file path expressions to include and exclude namespaces by name. The <b>matchExpressions</b> and <b>matchLabels</b> parameters specify namespaces to include by label. See the <a href="#">Kubernetes labels and selectors</a> documentation. The resulting list is compiled by using the intersection of results from all parameters.
<b>spec.remediationAction</b>	Required	Specifies the action to take when the policy is non-compliant. Use the following parameter values: <b>inform</b> , <b>InformOnly</b> , or <b>enforce</b> .
<b>spec.severity</b>	Required	Specifies the severity when the policy is non-compliant. Use the following parameter values: <b>low</b> , <b>medium</b> , <b>high</b> , or <b>critical</b> .
<b>spec.evaluationInterval.compliant</b>	Optional	Used to define how often the policy is evaluated when it is in the compliant state. The values must be in the format of a duration which is a sequence of numbers with time unit suffixes. For example, <b>12h30m5s</b> represents 12 hours, 30 minutes, and 5 seconds. It can also be set to <b>never</b> so that the policy is not reevaluated on the compliant cluster, unless the policy <b>spec</b> is updated.  By default, the minimum time between evaluations for configuration policies is approximately 10 seconds when the <b>evaluationInterval.compliant</b> is not set or empty. This can be longer if the configuration policy controller is saturated on the managed cluster.

Field	Optional or required	Description
<b>spec.evaluationInterval.noncompliant</b>	Optional	Used to define how often the policy is evaluated when it is in the non-compliant state. Similar to the <b>evaluationInterval.compliant</b> parameter, the values must be in the format of a duration which is a sequence of numbers with time unit suffixes. It can also be set to <b>never</b> so that the policy is not reevaluated on the non-compliant cluster, unless the policy <b>spec</b> is updated.
<b>spec.object-templates</b>	Optional	The array of Kubernetes objects (either fully defined or containing a subset of fields) for the controller to compare with objects on the managed cluster. <b>Note:</b> While <b>spec.object-templates</b> and <b>spec.object-templates-raw</b> are listed as optional, exactly one of the two parameter fields must be set.
<b>spec.object-templates-raw</b>	Optional	Used to set object templates with a raw YAML string. Specify conditions for the object templates, where advanced functions like if-else statements and the <b>range</b> function are supported values. For example, add the following value to avoid duplication in your <b>object-templates</b> definition:  <pre> {{- if eq .metadata.name "policy-grc-your-meta-data-name" }} replicas: 2 {{- else }} replicas: 1 {{- end }} </pre> <b>Note:</b> While <b>spec.object-templates</b> and <b>spec.object-templates-raw</b> are listed as optional, exactly one of the two parameter fields must be set.

Field	Optional or required	Description
<b>spec.object-templates[].complianceType</b>	Required	<p>Used to define the desired state of the Kubernetes object on the managed clusters. You must use one of the following verbs as the parameter value:</p> <p><b>mustonlyhave:</b> Indicates that an object must exist with the exact fields and values as defined in the <b>objectDefinition</b>.</p> <p><b>musthave:</b> Indicates an object must exist with the same fields as specified in the <b>objectDefinition</b>. Any existing fields on the object that are not specified in the <b>object-template</b> are ignored. In general, array values are appended. The exception for the array to be patched is when the item contains a <b>name</b> key with a value that matches an existing item. Use a fully defined <b>objectDefinition</b> using the <b>mustonlyhave</b> compliance type, if you want to replace the array.</p> <p><b>mustnothave:</b> Indicates that an object with the same fields as specified in the <b>objectDefinition</b> cannot exist.</p>
<b>spec.object-templates[].metadataComplianceType</b>	Optional	<p>Overrides <b>spec.object-templates[].complianceType</b> when comparing the manifest's metadata section to objects on the cluster ("musthave", "mustonlyhave"). Default is unset to not override <b>complianceType</b> for metadata.</p>
<b>spec.object-templates[].recordDiff</b>	Optional	<p>Specifies if and where to log the difference between the object on the cluster and the <b>objectDefinition</b> in the policy. Set to <b>Log</b> to log the difference in the controller logs or <b>None</b> to not log the difference. By default, this parameter is empty to not log the difference.</p>

Field	Optional or required	Description
<b>spec.object-templates[].objectDefinition</b>	Required	A Kubernetes object (either fully defined or containing a subset of fields) for the controller to compare with objects on the managed cluster.
<b>spec.pruneObjectBehavior</b>	Optional	Determines whether to clean up resources related to the policy when the policy is removed from a managed cluster.

### 2.3.1.3. Additional resources

See the following topics for more information:

- See the [Policy overview](#) for more details on the hub cluster policy.
- See the policy samples that use [NIST Special Publication 800-53 \(Rev. 4\)](#), and are supported by Red Hat Advanced Cluster Management from the [CM-Configuration-Management](#) folder.
- Learn about how policies are applied on your hub cluster, see [Supported policies](#) for more details.
- Refer to [Policy controllers](#) for more details about controllers.
- Customize your policy controller configuration. See [Policy controller advanced configuration](#).
- Learn about cleaning up resources and other topics in the [Cleaning up resources that are created by policies](#) documentation.
- Refer to [Policy Generator](#).
- Learn about how to create and customize policies, see [Manage Governance dashboard](#).
- See [Template processing](#).

### 2.3.2. Certificate policy controller

You can use the certificate policy controller to detect certificates that are close to expiring, time durations (hours) that are too long, or contain DNS names that fail to match specified patterns. You can add the certificate policy to the **policy-templates** field of the policy on the hub cluster, which propagates to the selected managed clusters by using the governance framework. See the [Policy overview](#) documentation for more details on the hub cluster policy.

Configure and customize the certificate policy controller by updating the following parameters in your controller policy:

- **minimumDuration**
- **minimumCADuration**
- **maximumDuration**

- **maximumCADuration**
- **allowedSANPattern**
- **disallowedSANPattern**

Your policy might become non-compliant due to either of the following scenarios:

- When a certificate expires in less than the minimum duration of time or exceeds the maximum time.
- When DNS names fail to match the specified pattern.

The certificate policy controller is created on your managed cluster. The controller communicates with the local Kubernetes API server to get the list of secrets that contain certificates and determine all non-compliant certificates.

Certificate policy controller does not support the **enforce** feature.

**Note:** The certificate policy controller automatically looks for a certificate in a secret in only the **tls.crt** key. If a secret is stored under a different key, add a label named **certificate\_key\_name** with a value set to the key to let the certificate policy controller know to look in a different key. For example, if a secret contains a certificate stored in the key named **sensor-cert.pem**, add the following label to the secret: **certificate\_key\_name: sensor-cert.pem**.

### 2.3.2.1. Certificate policy controller YAML structure

View the following example of a certificate policy and review the element in the YAML table:

```
apiVersion: policy.open-cluster-management.io/v1
kind: CertificatePolicy
metadata:
  name: certificate-policy-example
spec:
  namespaceSelector:
    include: ["default"]
    exclude: []
    matchExpressions: []
    matchLabels: {}
  labelSelector:
    myLabelKey: myLabelValue
  remediationAction:
  severity:
  minimumDuration:
  minimumCADuration:
  maximumDuration:
  maximumCADuration:
  allowedSANPattern:
  disallowedSANPattern:
```

#### 2.3.2.1.1. Certificate policy controller YAML table

Table 2.3. Parameter table



Field	Optional or required	Description
<b>apiVersion</b>	Required	Set the value to <b>policy.open-cluster-management.io/v1</b> .
<b>kind</b>	Required	Set the value to <b>CertificatePolicy</b> to indicate the type of policy.
<b>metadata.name</b>	Required	The name to identify the policy.
<b>metadata.labels</b>	Optional	In a certificate policy, the <b>category=system-and-information-integrity</b> label categorizes the policy and facilitates querying the certificate policies. If there is a different value for the <b>category</b> key in your certificate policy, the value is overridden by the certificate controller.
<b>spec.namespaceSelector</b>	Required	Determines namespaces in the managed cluster where secrets are monitored. The <b>include</b> and <b>exclude</b> parameters accept file path expressions to include and exclude namespaces by name. The <b>matchExpressions</b> and <b>matchLabels</b> parameters specify namespaces to be included by label. See the <a href="#">Kubernetes labels and selectors</a> documentation. The resulting list is compiled by using the intersection of results from all parameters.  <b>Note:</b> If the <b>namespaceSelector</b> for the certificate policy controller does not match any namespace, the policy is considered compliant.
<b>spec.labelSelector</b>	Optional	Specifies identifying attributes of objects. See the <a href="#">Kubernetes labels and selectors</a> documentation.

Field	Optional or required	Description
<b>spec.remediationAction</b>	Required	Specifies the remediation of your policy. Set the parameter value to <b>inform</b> . Certificate policy controller only supports <b>inform</b> feature.
<b>spec.severity</b>	Optional	Informs the user of the severity when the policy is non-compliant. Use the following parameter values: <b>low</b> , <b>medium</b> , <b>high</b> , or <b>critical</b> .
<b>spec.minimumDuration</b>	Required	When a value is not specified, the default value is <b>100h</b> . This parameter specifies the smallest duration (in hours) before a certificate is considered non-compliant. The parameter value uses the time duration format from Golang. See <a href="#">Golang Parse Duration</a> for more information.
<b>spec.minimumCADuration</b>	Optional	Set a value to identify signing certificates that might expire soon with a different value from other certificates. If the parameter value is not specified, the CA certificate expiration is the value used for the <b>minimumDuration</b> . See <a href="#">Golang Parse Duration</a> for more information.
<b>spec.maximumDuration</b>	Optional	Set a value to identify certificates that have been created with a duration that exceeds your desired limit. The parameter uses the time duration format from Golang. See <a href="#">Golang Parse Duration</a> for more information.
<b>spec.maximumCADuration</b>	Optional	Set a value to identify signing certificates that have been created with a duration that exceeds your defined limit. The parameter uses the time duration format from Golang. See <a href="#">Golang Parse Duration</a> for more information.

Field	Optional or required	Description
<b>spec.allowedSANPattern</b>	Optional	A regular expression that must match every SAN entry that you have defined in your certificates. This parameter checks DNS names against patterns. See the <a href="#">Golang Regular Expression syntax</a> for more information.
<b>spec.disallowedSANPattern</b>	Optional	A regular expression that must not match any SAN entries you have defined in your certificates. This parameter checks DNS names against patterns.  <b>Note:</b> To detect wild-card certificate, use the following SAN pattern: <b>disallowedSANPattern: "[\*]"</b>  See the <a href="#">Golang Regular Expression syntax</a> for more information.

### 2.3.2.2. Certificate policy sample

When your certificate policy controller is created on your hub cluster, a replicated policy is created on your managed cluster. See [policy-certificate.yaml](#) to view the certificate policy sample.

### 2.3.2.3. Additional resources

- Learn how to manage a certificate policy, see [Managing security policies](#) for more details.
- Refer to [Policy controllers introduction](#) for more topics.
- Return to the [Certificates introduction](#).

### 2.3.3. IAM policy controller (Deprecated)

The Identity and Access Management (IAM) policy controller can be used to receive notifications about IAM policies that are non-compliant. The compliance check is based on the parameters that you configure in the IAM policy. The IAM policy is provided in the **policy-templates** field of the policy on the hub cluster and is propagated to the selected managed clusters by the governance framework. See the [Policy YAML structure](#) documentation for more details on the hub cluster policy.

The IAM policy controller monitors for the desired maximum number of users with a particular cluster role (i.e. **ClusterRole**) in your cluster. The default cluster role to monitor is **cluster-admin**. The IAM policy controller communicates with the local Kubernetes API server.

The IAM policy controller runs on your managed cluster. View the following sections to learn more:

- [IAM policy YAML structure](#)
- [IAM policy YAML table](#)
- [IAM policy sample](#)

### 2.3.3.1. IAM policy YAML structure

View the following example of an IAM policy and review the parameters in the YAML table:

```
apiVersion: policy.open-cluster-management.io/v1
kind: IamPolicy
metadata:
  name:
spec:
  clusterRole:
  severity:
  remediationAction:
  maxClusterRoleBindingUsers:
  ignoreClusterRoleBindings:
```

### 2.3.3.2. IAM policy YAML table

View the following parameter table for descriptions:

Table 2.4. Parameter table

Field	Optional or required	Description
<b>apiVersion</b>	Required	Set the value to <b>policy.open-cluster-management.io/v1</b> .
<b>kind</b>	Required	Set the value to <b>Policy</b> to indicate the type of policy.
<b>metadata.name</b>	Required	The name for identifying the policy resource.
<b>spec.clusterRole</b>	Optional	The cluster role (i.e. <b>ClusterRole</b> ) to monitor. This defaults to <b>cluster-admin</b> if not specified.
<b>spec.severity</b>	Optional	Informs the user of the severity when the policy is non-compliant. Use the following parameter values: <b>low</b> , <b>medium</b> , <b>high</b> , or <b>critical</b> .

Field	Optional or required	Description
<b>spec.remediationAction</b>	Optional	Specifies the remediation of your policy. Enter <b>inform</b> . The IAM policy controller only supports the <b>inform</b> feature.
<b>spec.ignoreClusterRoleBindings</b>	Optional	A list of regular expression (regex) values that indicate which cluster role binding names to ignore. These regular expression values must follow <a href="#">Go regexp syntax</a> . By default, all cluster role bindings that have a name that starts with <b>system:</b> are ignored. It is recommended to set this to a stricter value. To not ignore any cluster role binding names, set the list to a single value of <b>.^</b> or some other regular expression that never matches.
<b>spec.maxClusterRoleBindingUsers</b>	Required	Maximum number of IAM role bindings that are available before a policy is considered non-compliant.

### 2.3.3.3. IAM policy sample

See [policy-limitclusteradmin.yaml](#) to view the IAM policy sample. See [Managing security policies](#) for more information. Refer to [Policy controllers](#) for more topics.

### 2.3.4. Policy set controller

The policy set controller aggregates the policy status scoped to policies that are defined in the same namespace. Create a policy set (**PolicySet**) to group policies that are in the same namespace. All policies in the **PolicySet** are placed together in a selected cluster by creating a **PlacementBinding** to bind the **PolicySet** and **Placement**. The policy set is deployed to the hub cluster.

Additionally, when a policy is a part of multiple policy sets, existing and new **Placement** resources remain in the policy. When a user removes a policy from the policy set, the policy is not applied to the cluster that is selected in the policy set, but the placements remain. The policy set controller only checks for violations in clusters that include the policy set placement.

#### Notes:

- The Red Hat Advanced Cluster Management sample policy set uses cluster placement. If you use cluster placement, bind the namespace containing the policy to the managed cluster set. See [Deploying policies to your cluster](#) for more details on using cluster placement.

- In order to use a **Placement** resource, a **ManagedClusterSet** resource must be bound to the namespace of the **Placement** resource with a **ManagedClusterSetBinding** resource. Refer to [Creating a \*ManagedClusterSetBinding\* resource](#) for additional details.

Learn more details about the policy set structure in the following sections:

- [Policy set controller YAML structure](#)
- [Policy set controller YAML table](#)
- [Policy set sample](#)

### 2.3.4.1. Policy set YAML structure

Your policy set might resemble the following YAML file:

```

apiVersion: policy.open-cluster-management.io/v1beta1
kind: PolicySet
metadata:
  name: demo-policyset
spec:
  policies:
  - policy-demo
---
apiVersion: policy.open-cluster-management.io/v1
kind: PlacementBinding
metadata:
  name: demo-policyset-pb
placementRef:
  apiGroup: cluster.open-cluster-management.io
  kind: Placement
  name: demo-policyset-pr
subjects:
- apiGroup: policy.open-cluster-management.io
  kind: PolicySet
  name: demo-policyset
---
apiVersion: cluster.open-cluster-management.io/v1beta1
kind: Placement
metadata:
  name: demo-policyset-pr
spec:
  predicates:
  - requiredClusterSelector:
    labelSelector:
      matchExpressions:
      - key: name
        operator: In
        values:
        - local-cluster

```

### 2.3.4.2. Policy set table

View the following parameter table for descriptions:

Table 2.5. Parameter table

Field	Optional or required	Description
<b>apiVersion</b>	Required	Set the value to <b>policy.open-cluster-management.io/v1beta1</b> .
<b>kind</b>	Required	Set the value to <b>PolicySet</b> to indicate the type of policy.
<b>metadata.name</b>	Required	The name for identifying the policy resource.
<b>spec</b>	Required	Add configuration details for your policy.
<b>spec.policies</b>	Optional	The list of policies that you want to group together in the policy set.

### 2.3.4.3. Policy set sample

```

apiVersion: policy.open-cluster-management.io/v1beta1
kind: PolicySet
metadata:
  name: pci
  namespace: default
spec:
  description: Policies for PCI compliance
  policies:
  - policy-pod
  - policy-namespace
status:
  compliant: NonCompliant
placement:
  - placementBinding: binding1
  placement: placement1
  policySet: policyset-ps

```

### 2.3.4.4. Additional resources

- See [Red Hat OpenShift Platform Plus policy set](#) .
- See the *Creating policy sets* section in the [Managing security policies](#) topic.
- Also view the stable **PolicySets**, which require the Policy Generator for deployment, [PolicySets-- Stable](#).
- Return to the beginning of this topic, [Policy set controller](#).

### 2.3.5. Operator policy controller (Technology Preview)

The operator policy controller allows you to monitor and install Operator Lifecycle Manager (OLM) operators across your clusters. Use the operator policy controller to monitor the health of various pieces of the operator and to specify how you want to automatically handle updates to the operator. You can also distribute an operator policy to managed clusters by using the governance framework and adding the policy to the **policy-templates** field of a policy on the hub cluster.

### 2.3.5.1. Prerequisites

- OLM must be available on your managed cluster. This is enabled by default on Red Hat OpenShift Container Platform.
- **Required access:** Cluster administrator

### 2.3.5.2. Operator policy YAML table

Field	Optional or required	Description
<b>apiVersion</b>	Required	Set the value to <b>policy.open-cluster-management.io/v1beta1</b> .
<b>kind</b>	Required	Set the value to <b>OperatorPolicy</b> to indicate the type of policy.
<b>metadata.name</b>	Required	The name for identifying the policy resource.
<b>spec.remediationAction</b>	Required	If the <b>remediationAction</b> for the operator policy is set to <b>enforce</b> , the controller creates resources on the target managed cluster to communicate to OLM to install the operator and approve updates based on the versions specified in the policy. + If the <b>remediationAction</b> set to <b>inform</b> , the controller only reports the status of the operator, including if any upgrades are available.
<b>spec.operatorGroup</b>	Optional	By default, if the <b>operatorGroup</b> field is not specified, the controller generates an <b>AllNamespaces</b> type OperatorGroup in the same namespace as the subscription, if supported. This resource is generated by the operator policy controller.



Field	Optional or required	Description
<b>spec.subscription</b>	Required	<p>Define the configurations to create an operator subscription. You must add information in the following fields to create an operator subscription:</p> <ul style="list-style-type: none"> <li>● <b>channel</b></li> <li>● <b>name</b></li> <li>● <b>namespace</b></li> <li>● <b>source</b></li> <li>● <b>sourceNamespace</b></li> </ul>
<b>subscriptions.installPlanApproval</b>	Required	<p>If the <b>installPlanApproval</b> field is set to <b>Manual</b>, and the <b>spec.versions</b> field is empty, you must manually patch the <b>.spec.approved</b> field in the relevant <b>InstallPlan</b> resource to proceed with the installation process. The <b>InstallPlan</b> resource for an operator is generated after the subscription is created by the controller, and represents the intention to install a specific version of the desired operator.</p>
<b>spec.versions</b>	Optional	<p>Declare which versions of the operator are compliant. If the field is empty, any version running on the cluster is considered compliant. If the field is not empty, the version on the managed cluster must match one of the versions in the list for the policy to be compliant. If the policy is set to <b>enforce</b> and the list is not empty, the versions listed here are approved by the controller on the cluster.</p>

### 2.3.5.3. Additional resources

- See [Installing an operator by using the \*\*OperatorPolicy\*\* resource](#) for more details.

- See [Operator Lifecycle Manager \(OLM\)](#) for more details.
- See the [Adding Operators to a cluster](#) documentation for general information on OLM.

## 2.4. POLICY CONTROLLER ADVANCED CONFIGURATION

You can customize policy controller configurations on your managed clusters by using the **ManagedClusterAddOn** custom resources. The following **ManagedClusterAddOns** configure the policy framework, Kubernetes configuration policy controller, Certificate policy controller, and IAM policy controller.

**Required access:** Cluster administrator

- [Configure the concurrency of the governance framework](#)
- [Configure the concurrency of the configuration policy controller](#)
- [Configure the rate of requests to the API server](#)
- [Configure debug log](#)
- [Governance metric](#)
- [Verify configuration changes](#)

### 2.4.1. Configure the concurrency of the governance framework

Configure the concurrency of the governance framework for each managed cluster. To change the default value of **2**, set the **policy-evaluation-concurrency** annotation with a nonzero integer within quotation marks. Then set the value on the **ManagedClusterAddOn** object name to **governance-policy-framework** in the managed cluster namespace of the hub cluster.

See the following YAML example where the concurrency is set to **2** on the managed cluster named **cluster1**:

```
apiVersion: addon.open-cluster-management.io/v1alpha1
kind: ManagedClusterAddOn
metadata:
  name: governance-policy-framework
  namespace: cluster1
  annotations:
    policy-evaluation-concurrency: "2"
spec:
  installNamespace: open-cluster-management-agent-addon
```

To set the **client-qps** and **client-burst** annotations, update the **ManagedClusterAddOn** resource and define the parameters.

See the following YAML example where the queries for each second is set to **30** and the burst is set to **45** on the managed cluster called **cluster1**:

```
apiVersion: addon.open-cluster-management.io/v1alpha1
kind: ManagedClusterAddOn
metadata:
  name: governance-policy-framework
```

```

namespace: cluster1
annotations:
  client-qps: "30"
  client-burst: "45"
spec:
  installNamespace: open-cluster-management-agent-addon

```

### 2.4.2. Configure the concurrency of the configuration policy controller

You can configure the concurrency of the configuration policy controller for each managed cluster to change how many configuration policies it can evaluate at the same time. To change the default value of **2**, set the **policy-evaluation-concurrency** annotation with a nonzero integer within quotation marks. Then set the value on the **ManagedClusterAddOn** object name to **config-policy-controller** in the managed cluster namespace of the hub cluster.

**Note:** Increased concurrency values increase CPU and memory utilization on the **config-policy-controller** pod, Kubernetes API server, and OpenShift API server.

See the following YAML example where the concurrency is set to **5** on the managed cluster named **cluster1**:

```

apiVersion: addon.open-cluster-management.io/v1alpha1
kind: ManagedClusterAddOn
metadata:
  name: config-policy-controller
  namespace: cluster1
  annotations:
    policy-evaluation-concurrency: "5"
spec:
  installNamespace: open-cluster-management-agent-addon

```

### 2.4.3. Configure the rate of requests to the API server

Configure the rate of requests to the API server that the configuration policy controller makes on each managed cluster. An increased rate improves the responsiveness of the configuration policy controller, which also increases the CPU and memory utilization of the Kubernetes API server and OpenShift API server. By default, the rate of requests scales with the **policy-evaluation-concurrency** setting and is set to **30** queries for each second (QPS), with a **45** burst value, representing a higher number of requests over short periods of time.

You can configure the rate and burst by setting the **client-qps** and **client-burst** annotations with nonzero integers within quotation marks. You can set the value on the **ManagedClusterAddOn** object name to **config-policy-controller** in the managed cluster namespace of the hub cluster.

See the following YAML example where the queries for each second is set to **20** and the burst is set to **100** on the managed cluster called **cluster1**:

```

apiVersion: addon.open-cluster-management.io/v1alpha1
kind: ManagedClusterAddOn
metadata:
  name: config-policy-controller
  namespace: cluster1
  annotations:
    client-qps: "20"

```

```

client-burst: "100"
spec:
  installNamespace: open-cluster-management-agent-addon

```

#### 2.4.4. Configure debug log

When you configure and collect debug logs for each policy controller, you can adjust the log level.

**Note:** Reducing the volume of debug logs means there is less information displayed from the logs.

You can reduce the debug logs emitted by the policy controllers to be display error-only bugs in the logs. To reduce the debug logs, set the debug log value to **-1** in the annotation. See what each value represents:

- **-1:** error logs only
- **0:** informative logs
- **1:** debug logs
- **2:** verbose debugging logs

To receive the second level of debugging information for the Kubernetes configuration controller, add the **log-level** annotation with the value of **2** to the **ManagedClusterAddOn** custom resource. By default, the **log-level** is set to **0**, which means you receive informative messages. View the following example:

```

apiVersion: addon.open-cluster-management.io/v1alpha1
kind: ManagedClusterAddOn
metadata:
  name: config-policy-controller
  namespace: cluster1
  annotations:
    log-level: "2"
spec:
  installNamespace: open-cluster-management-agent-addon

```

Additionally, for each **spec.object-template[]** in a **ConfigurationPolicy** resource, you can set the parameter **recordDiff** to **Log**. The difference between the **objectDefinition** and the object on the managed cluster is logged in the **config-policy-controller** pod on the managed cluster. View the following example:

This **ConfigurationPolicy** resource with **recordDiff: Log**:

```

apiVersion: policy.open-cluster-management.io/v1
kind: ConfigurationPolicy
metadata:
  name: my-config-policy
spec:
  object-templates:
  - complianceType: musthave
    recordDiff: Log
    objectDefinition:
      apiVersion: v1
      kind: ConfigMap

```

```

metadata:
  name: my-configmap
data:
  fieldToUpdate: "2"

```

If the **ConfigMap** resource on the cluster lists **fieldToUpdate: "1"**, then the diff appears in the **config-policy-controller** pod logs with the following information:

```

Logging the diff:
--- default/my-configmap : existing
+++ default/my-configmap : updated
@@ -2,3 +2,3 @@
data:
- fieldToUpdate: "1"
+ fieldToUpdate: "2"
kind: ConfigMap

```

**Important:** Avoid logging the difference for a secure object. The difference is logged in plain text.

## 2.4.5. Governance metric

The policy framework exposes metrics that show policy distribution and compliance. Use the **policy\_governance\_info** metric on the hub cluster to view trends and analyze any policy failures. See the following topics for an overview of metrics:

### 2.4.5.1. Metric: **policy\_governance\_info**

The OpenShift Container Platform monitoring component collects the **policy\_governance\_info** metric. If you enable observability, the component collects some aggregate data.

**Note:** If you enable observability, enter a query for the metric from the Grafana *Explore* page. When you create a policy, you are creating a *root* policy. The framework watches for root policies, **Placement** resources, and **PlacementBindings** resources to for information about where to create *propagated* policies, to distribute the policy to managed clusters.

For both root and propagated policies, a metric of **0** is recorded if the policy is compliant, and **1** if it is non-compliant.

The **policy\_governance\_info** metric uses the following labels:

- **type:** The label values are **root** or **propagated**.
- **policy:** The name of the associated root policy.
- **policy\_namespace:** The namespace on the hub cluster where the root policy is defined.
- **cluster\_namespace:** The namespace for the cluster where the policy is distributed.

These labels and values enable queries that can show us many things happening in the cluster that might be difficult to track.

**Note:** If you do not need the metrics, and you have any concerns about performance or security, you can disable the metric collection. Set the **DISABLE\_REPORT\_METRICS** environment variable to **true** in the propagator deployment. You can also add **policy\_governance\_info** metric to the observability allowlist as a custom metric. See [Adding custom metrics](#) for more details.

### 2.4.5.2. Metric: `config_policies_evaluation_duration_seconds`

The `config_policies_evaluation_duration_seconds` histogram tracks the number of seconds it takes to process all configuration policies that are ready to be evaluated on the cluster. Use the following metrics to query the histogram:

- **`config_policies_evaluation_duration_seconds_bucket`**: The buckets are cumulative and represent seconds with the following possible entries: 1, 3, 9, 10.5, 15, 30, 60, 90, 120, 180, 300, 450, 600, and greater.
- **`config_policies_evaluation_duration_seconds_count`**: The count of all events.
- **`config_policies_evaluation_duration_seconds_sum`**: The sum of all values.

Use the `config_policies_evaluation_duration_seconds` metric to determine if the `ConfigurationPolicy evaluationInterval` setting needs to be changed for resource intensive policies that do not need frequent evaluation. You can also increase the concurrency at the cost of higher resource utilization on the Kubernetes API server. See *Configure the concurrency* section for more details.

To receive information about the time used to evaluate configuration policies, perform a Prometheus query that resembles the following expression:

```
rate(config_policies_evaluation_duration_seconds_sum[10m])/rate(config_policies_evaluation_duration_seconds_count[10m])
```

The `config-policy-controller` pod running on managed clusters in the `open-cluster-management-agent-addon` namespace calculates the metric. The `config-policy-controller` does not send the metric to observability by default.

### 2.4.6. Verify configuration changes

When you apply the new configuration with the controller, the `ManifestApplied` parameter is updated in the `ManagedClusterAddOn`. That condition timestamp helps verify the configuration correctly. For example, this command can verify when the `cert-policy-controller` on the `local-cluster` was updated:

```
oc get -n local-cluster managedclusteraddon cert-policy-controller | grep -B4 'type: ManifestApplied'
```

You might receive the following output:

```
- lastTransitionTime: "2023-01-26T15:42:22Z"
  message: manifests of addon are applied successfully
  reason: AddonManifestApplied
  status: "True"
  type: ManifestApplied
```

### 2.4.7. Additional resources

- See [Kubernetes configuration policy controller](#)
- Return to the [Governance](#) topic for more topics.
- Return to the beginning of this topic, [Policy controller advanced configuration](#).

## 2.5. POLICY COMPLIANCE HISTORY (TECHNOLOGY PREVIEW)

The policy compliance history API is an optional technical preview feature if you want long-term storage of Red Hat Advanced Cluster Management for Kubernetes policy compliance events in a queryable format. You can use the API to get additional details such as the **spec** field to audit and troubleshoot your policy, and get compliance events when a policy is disabled or removed from a cluster. The policy compliance history API can also generate a comma-separated values (CSV) spreadsheet of policy compliance events to help you with auditing and troubleshooting.

The policy compliance history API can also generate a comma-separated values (CSV) spreadsheet of policy compliance events for further auditing and troubleshooting.

### 2.5.1. Prerequisites

- The policy compliance history API requires a PostgreSQL server on version 13 or newer. Some Red Hat supported options include using the **registry.redhat.io/rhel9/postgresql-15** container image, the **registry.redhat.io/rhel8/postgresql-13** container image, the **postgresql-server** RPM, or **postgresql/server** module. Review the applicable official Red Hat documentation on setup and configuration for the path you choose. The policy compliance history API is compatible with any standard PostgreSQL and is not limited to the official Red Hat supported offerings.
- This PostgreSQL server must be reachable from the Red Hat Advanced Cluster Management hub cluster. If the PostgreSQL server is running externally of the hub cluster, ensure the routing and firewall configuration allows the hub cluster to connect to port 5432 of the PostgreSQL server. This port might be a different value if it is overridden in the PostgreSQL configuration.

### 2.5.2. Enable the compliance history API

Configure your managed clusters to record policy compliance events to the API. You can enable this on all clusters or a subset of clusters. Complete the following steps:

1. Configure the PostgreSQL server as a cluster administrator. If you deployed PostgreSQL on your Red Hat Advanced Cluster Management hub cluster, temporarily port-forward the PostgreSQL port to use the **psql** command. Run the following command:

```
oc -n <PostgreSQL namespace> port-forward <PostgreSQL pod name> 5432:5432
```

2. In a different terminal, connect to the PostgreSQL server locally similar to the following command:

```
psql 'postgres://postgres:@127.0.0.1:5432/postgres'
```

3. Create a user and database for your Red Hat Advanced Cluster Management hub cluster with the following SQL statements:

```
CREATE USER "rhacm-policy-compliance-history" WITH PASSWORD '<replace with password>';
CREATE DATABASE "rhacm-policy-compliance-history" WITH OWNER="rhacm-policy-compliance-history";
```

4. Create the **governance-policy-database Secret** resource to use this database for the policy compliance history API. Run the following command:

```
oc -n open-cluster-management create secret generic governance-policy-database \ 1
  --from-literal="user=rhacm-policy-compliance-history" \
  --from-literal="password=rhacm-policy-compliance-history" \
  --from-literal="host=<replace with host name of the Postgres server>" \ 2
  --from-literal="dbname=ocm-compliance-history" \
  --from-literal="sslmode=verify-full" \
  --from-file="ca=<replace>" \ 3
```

- 1** Add the namespace where Red Hat Advanced Cluster Management is installed. By default, Red Hat Advanced Cluster Management is installed in the **open-cluster-management** namespace.
- 2** Add the host name of the PostgreSQL server. If you deployed the PostgreSQL server on the Red Hat Advanced Cluster Management hub cluster and it is not exposed outside of the cluster, you can use the **Service** object for the host value. The format is **<service name>.<namespace>.svc**. Note, this approach depends on the network policies of the Red Hat Advanced Cluster Management hub cluster.
- 3** You must specify the Certificate Authority certificate file in the **ca** data field that signed the TLS certificate of the PostgreSQL server. If you do not provide this value, you must change the *sslmode* value accordingly, though it is not recommended since it reduces the security of the database connection.

5. Add the **cluster.open-cluster-management.io/backup** label to backup the **Secret** resource for a Red Hat Advanced Cluster Management hub cluster restore operation. Run the following command:

```
oc -n open-cluster-management label secret governance-policy-database cluster.open-cluster-management.io/backup=""
```

6. For more customization of the PostgreSQL connection, use the **connectionURL** data field directly and provide a value in the format of a PostgreSQL connection URI. Special characters in the password must be URL encoded. One option is to use Python to generate the URL encoded format of the password. For example, if the password is **\$Super<Secr&t%>**, run the following Python command to get the output **%24uper%3CSecr%26t%25%3E**:

```
python -c 'import urllib.parse; import sys; print(urllib.parse.quote(sys.argv[1]))'
'$Super<Secr&t%>'
```

7. Run the command to test the policy compliance history API after you create the **governance-policy-database Secret**. An OpenShift **Route** object is automatically created in the same namespace. If routes on the Red Hat Advanced Cluster Management hub cluster do not utilize a trusted certificate, you can choose to provide the **-k** flag in the curl command to skip TLS verification, though this is not recommended:

```
curl -H "Authorization: Bearer $(oc whoami --show-token)" \
  "https://$(oc -n open-cluster-management get route governance-history-api -o jsonpath='{.spec.host}')/api/v1/compliance-events"
```

- If successful, the curl command returns a value similar to the following message:

```
{"data":[],"metadata":{"page":1,"pages":0,"per_page":20,"total":0}}
```



- If it is not successful, the curl command might return either of the two messages:

```
{"message":"The database is unavailable"}
```

```
{"message":"Internal Error"}
```

- a. If you receive a message, view the Kubernetes events in the **open-cluster-management** namespace with the following command:

```
oc -n open-cluster-management get events --field-selector
reason=OCMComplianceEventsDBError
```

- b. If you receive instructions from the event to view the **governance-policy-propagator** logs, run the following command:

```
oc -n open-cluster-management logs -l name=governance-policy-propagator -f
```

- c. You might receive an error message that indicates the user, password, or database is incorrectly specified. See the following message example:

```
2024-03-05T12:17:14.500-0500 info compliance-events-api
complianceeventsapi/complianceeventsapi_controller.go:261 The database
connection failed: pq: password authentication failed for user "rhacm-policy-
compliance-history"
```

- d. Update the **governance-policy-database Secret** resource with the correct PostgreSQL connection settings with the following command:

```
oc -n open-cluster-management edit secret governance-policy-database
```

### 2.5.3. Set the compliance history API URL

Set the policy compliance history API URL to enable the feature on managed clusters. Complete the following steps:

1. Retrieve the external URL of the policy compliance history API with the following command:

```
echo "https://$(oc -n open-cluster-management get route governance-history-api -
o=jsonpath='{.spec.host}')"
```

The output might resemble the following information, with the domain name of your Red Hat Advanced Cluster Management hub cluster:

```
https://governance-history-api-open-cluster-management.apps.openshift.redhat.com
```

2. Create an **AddOnDeploymentConfig** object similar to the following example:

```
apiVersion: addon.open-cluster-management.io/v1alpha1
kind: AddOnDeploymentConfig
metadata:
  name: governance-policy-framework
  namespace: open-cluster-management
```

```
spec:
  customizedVariables:
    - name: complianceHistoryAPIURL
      value: <replace with URL from previous command>
```

- Replace the **value** parameter value with your compliance history external URL.

### 2.5.3.1. Enable on all managed clusters

Enable the compliance history API on all managed clusters to record compliance events from your managed clusters. Complete the following steps:

1. Configure the **governance-policy-framework ClusterManagementAddOn** object to use the **AddOnDeploymentConfig** with the following command:

```
oc edit ClusterManagementAddOn governance-policy-framework
```

2. Add or update the **spec.supportedConfigs** array. Your resource might have the following configuration:

```
- group: addon.open-cluster-management.io
  resource: addondeploymentconfigs
  defaultConfig:
    name: governance-policy-framework
    namespace: open-cluster-management
```

### 2.5.3.2. Enable a single managed cluster

Enable the compliance history API on a single managed cluster to record compliance events from the managed cluster. Complete the following steps:

1. Configure the **governance-policy-framework ManagedClusterAddOn** resource in the managed cluster namespace. Run the following command from your Red Hat Advanced Cluster Management hub cluster with the following command:

```
oc -n <manage-cluster-namespace> edit ManagedClusterAddOn governance-policy-framework
```

- Replace the **<manage-cluster-namespace>** placeholder with the managed cluster name you intend to enable.
2. Add or update the **spec.configs** array to have an entry similar to the following example:

```
- group: addon.open-cluster-management.io
  resource: addondeploymentconfigs
  name: governance-policy-framework
  namespace: open-cluster-management
```

3. To verify the configuration, confirm that the deployment on your managed cluster is using the **--compliance-api-url** container argument. Run the following command:

```
oc -n open-cluster-management-agent-addon get deployment governance-policy-framework -o jsonpath='{.spec.template.spec.containers[1].args}'
```

The output might resemble the following:

```
[ "--enable-lease=true", "--hub-cluster-configfile=/var/run/klusterlet/kubeconfig", "--leader-elect=false", "--log-encoder=console", "--log-level=0", "--v=-1", "--evaluation-concurrency=2", "--client-max-qps=30", "--client-burst=45", "--disable-spec-sync=true", "--cluster-namespace=local-cluster", "--compliance-api-url=https://governance-history-api-open-cluster-management.apps.openshift.redhat.com"]
```

Any new policy compliance events are recorded in the policy compliance history API.

- a. If policy compliance events are not being recorded for a specific managed cluster, view the **governance-policy-framework** logs on the affected managed cluster:

```
oc -n open-cluster-management-agent-addon logs deployment/governance-policy-framework -f
```

- b. Log messages similar to the following message are displayed. If the **message** value is empty, the policy compliance history API URL is incorrect or there is a network communication issue:

```
024-03-05T19:28:38.063Z    info    policy-status-sync
statussync/policy_status_sync.go:750    Failed to record the compliance event with the
compliance API. Will requeue.    {"statusCode": 503, "message": ""}
```

- c. If the policy compliance history API URL is incorrect, edit the URL on the hub cluster with the following command:

```
oc -n open-cluster-management edit AddOnDeploymentConfig governance-policy-framework
```

**Note:** If you experience a network communication issue, you must diagnose the problem based on your network infrastructure.

## 2.5.4. Additional resource

- See [Policy compliance history API \(Technology Preview\)](#).

## 2.6. SUPPORTED POLICIES

View the supported policies to learn how to define rules, processes, and controls on the hub cluster when you create and manage policies in Red Hat Advanced Cluster Management for Kubernetes.

### 2.6.1. Table of sample configuration policies

View the following sample configuration policies:

Table 2.6. Table list of configuration policies

Policy sample	Description
---------------	-------------

Policy sample	Description
Namespace policy	Ensure consistent environment isolation and naming with Namespaces. See the Kubernetes <a href="#">Namespace documentation</a> .
Pod policy	Ensure cluster workload configuration. See the Kubernetes <a href="#">Pod documentation</a> .
Memory usage policy	Limit workload resource usage using Limit Ranges. See the <a href="#">Limit Range documentation</a> .
Pod security policy (Deprecated)	Ensure consistent workload security. See the Kubernetes <a href="#">Pod security policy documentation</a>
Role policy Role binding policy	Manage role permissions and bindings using roles and role bindings. See the Kubernetes <a href="#">RBAC documentation</a> .
Security content constraints (SCC) policy	Manage workload permissions with Security Context Constraints. See <a href="#">Managing Security Context Constraints documentation</a> in the OpenShift Container Platform documentation.
ETCD encryption policy	Ensure data security with etcd encryption. See <a href="#">Encrypting etcd data</a> in the OpenShift Container Platform documentation.
Compliance operator policy	Deploy the Compliance Operator to scan and enforce the compliance state of clusters leveraging OpenSCAP. See <a href="#">Understanding the Compliance Operator</a> in the OpenShift Container Platform documentation.
Compliance operator E8 scan	After applying the Compliance operator policy, deploy an Essential 8 (E8) scan to check for compliance with E8 security profiles. See <a href="#">Understanding the Compliance Operator</a> in the OpenShift Container Platform documentation.
Compliance operator CIS scan	After applying the Compliance operator policy, deploy a Center for Internet Security (CIS) scan to check for compliance with CIS security profiles. See <a href="#">Understanding the Compliance Operator</a> in the OpenShift Container Platform documentation.
Image vulnerability policy	Deploy the Container Security Operator and detect known image vulnerabilities in pods running on the cluster. See the <a href="#">Container Security Operator GitHub repository</a> .

Policy sample	Description
Gatekeeper operator deployment	Gatekeeper is an admission webhook that enforces custom resource definition-based policies that are run by the Open Policy Agent (OPA) policy engine. See the <a href="#">Gatekeeper</a> documentation.
Gatekeeper compliance policy	After deploying Gatekeeper to the clusters, deploy this sample Gatekeeper policy that ensures namespaces that are created on the cluster are labeled as specified.
Red Hat OpenShift Platform Plus policy set	Red Hat OpenShift Platform Plus is a hybrid-cloud suite of products to securely build, deploy, run, and manage applications for multiple infrastructures. You can deploy Red Hat OpenShift Platform Plus to managed clusters using <b>PolicySets</b> delivered through a Red Hat Advanced Cluster Management application. For details on OpenShift Platform Plus, see the documentation for <a href="#">OpenShift Platform Plus</a> .

Red Hat OpenShift Container Platform 4.x also supports the Red Hat Advanced Cluster Management configuration policies.

View the following policy documentation to learn how policies are applied:

- [Namespace policy](#)
- [Pod policy](#)
- [Memory usage policy](#)
- [Pod security policy](#)
- [Role policy](#)
- [Role binding policy](#)
- [Security context constraints policy](#)
- [ETCD encryption policy](#)
- [Compliance operator policy](#)
- [E8 scan policy](#)
- [OpenShift CIS scan policy](#)
- [Image vulnerability policy](#)
- [Red Hat OpenShift Platform Plus policy set](#)

Refer to [Governance](#) for more topics.

## 2.6.2. Namespace policy

The Kubernetes configuration policy controller monitors the status of your namespace policy. Apply the namespace policy to define specific rules for your namespace.

Learn more details about the namespace policy structure in the following sections:

- [Namespace policy YAML structure](#)
- [Namespace policy table](#)
- [Namespace policy sample](#)

### 2.6.2.1. Namespace policy YAML structure

```

apiVersion: policy.open-cluster-management.io/v1
kind: Policy
metadata:
  name:
  namespace:
  annotations:
    policy.open-cluster-management.io/standards:
    policy.open-cluster-management.io/categories:
    policy.open-cluster-management.io/controls:
    policy.open-cluster-management.io/description:
spec:
  remediationAction:
  disabled:
  policy-templates:
    - objectDefinition:
      apiVersion: policy.open-cluster-management.io/v1
      kind: ConfigurationPolicy
      metadata:
        name:
      spec:
        remediationAction:
        severity:
        object-templates:
          - complianceType:
            objectDefinition:
              kind: Namespace
              apiVersion: v1
              metadata:
                name:
            ...

```

### 2.6.2.2. Namespace policy YAML table

Field	Optional or required	Description
-------	----------------------	-------------

Field	Optional or required	Description
<b>apiVersion</b>	Required	Set the value to <b>policy.open-cluster-management.io/v1</b> .
<b>kind</b>	Required	Set the value to <b>Policy</b> to indicate the type of policy.
<b>metadata.name</b>	Required	The name for identifying the policy resource.
<b>metadata.namespace</b>	Required	The namespace of the policy.
<b>spec.remediationAction</b>	Optional	Specifies the remediation of your policy. The parameter values are <b>enforce</b> and <b>inform</b> . This value is optional because it overrides any values provided in <b>spec.policy-templates</b> .
<b>spec.disabled</b>	Required	Set the value to <b>true</b> or <b>false</b> . The <b>disabled</b> parameter provides the ability to enable and disable your policies.
<b>spec.policy-templates[].objectDefinition</b>	Required	Used to list configuration policies containing Kubernetes objects that must be evaluated or applied to the managed clusters.

### 2.6.2.3. Namespace policy sample

See [policy-namespace.yaml](#) to view the policy sample.

See [Managing security policies](#) for more details. Refer to [Policy overview](#) documentation, and to the [Kubernetes configuration policy controller](#) to learn about other configuration policies.

### 2.6.3. Pod policy

The Kubernetes configuration policy controller monitors the status of your pod policies. Apply the pod policy to define the container rules for your pods. A pod must exist in your cluster to use this information.

Learn more details about the pod policy structure in the following sections:

- [Pod policy YAML structure](#)
- [Pod policy table](#)
- [Pod policy sample](#)

### 2.6.3.1. Pod policy YAML structure

```

apiVersion: policy.open-cluster-management.io/v1
kind: Policy
metadata:
  name:
  namespace:
  annotations:
    policy.open-cluster-management.io/standards:
    policy.open-cluster-management.io/categories:
    policy.open-cluster-management.io/controls:
    policy.open-cluster-management.io/description:
spec:
  remediationAction:
  disabled:
  policy-templates:
    - objectDefinition:
      apiVersion: policy.open-cluster-management.io/v1
      kind: ConfigurationPolicy
      metadata:
        name:
      spec:
        remediationAction:
        severity:
        namespaceSelector:
          exclude:
          include:
          matchLabels:
          matchExpressions:
        object-templates:
          - complianceType:
            objectDefinition:
              apiVersion: v1
              kind: Pod
              metadata:
                name:
              spec:
                containers:
                  - image:
                    name:
            ...

```

### 2.6.3.2. Pod policy table

Table 2.7. Parameter table

Field	Optional or required	Description
<b>apiVersion</b>	Required	Set the value to <b>policy.open-cluster-management.io/v1</b> .
<b>kind</b>	Required	Set the value to <b>Policy</b> to indicate the type of policy.



Field	Optional or required	Description
<b>metadata.name</b>	Required	The name for identifying the policy resource.
<b>metadata.namespace</b>	Required	The namespace of the policy.
<b>spec.remediationAction</b>	Optional	Specifies the remediation of your policy. The parameter values are <b>enforce</b> and <b>inform</b> . This value is optional because the value overrides any values provided in <b>spec.policy-templates</b> .
<b>spec.disabled</b>	Required	Set the value to <b>true</b> or <b>false</b> . The <b>disabled</b> parameter provides the ability to enable and disable your policies.
<b>spec.policy-templates[].objectDefinition</b>	Required	Used to list configuration policies containing Kubernetes objects that must be evaluated or applied to the managed clusters.

### 2.6.3.3. Pod policy sample

See [policy-pod.yaml](#) to view the policy sample.

Refer to [Kubernetes configuration policy controller](#) to view other configuration policies that are monitored by the configuration controller, and see the [Policy overview documentation](#) to see a full description of the policy YAML structure and additional fields. Return to [Managing configuration policies](#) documentation to manage other policies.

## 2.6.4. Memory usage policy

The Kubernetes configuration policy controller monitors the status of the memory usage policy. Use the memory usage policy to limit or restrict your memory and compute usage. For more information, see *Limit Ranges* in the [Kubernetes documentation](#).

Learn more details about the memory usage policy structure in the following sections:

- [Memory usage policy YAML structure](#)
- [Memory usage policy table](#)
- [Memory usage policy sample](#)

### 2.6.4.1. Memory usage policy YAML structure

Your memory usage policy might resemble the following YAML file:

```

apiVersion: policy.open-cluster-management.io/v1
kind: Policy
metadata:
  name:
  namespace:
  annotations:
    policy.open-cluster-management.io/standards:
    policy.open-cluster-management.io/categories:
    policy.open-cluster-management.io/controls:
    policy.open-cluster-management.io/description:
spec:
  remediationAction:
  disabled:
  policy-templates:
  - objectDefinition:
    apiVersion: policy.open-cluster-management.io/v1
    kind: ConfigurationPolicy
    metadata:
      name:
    spec:
      remediationAction:
      severity:
      namespaceSelector:
        exclude:
        include:
      matchLabels:
      matchExpressions:
    object-templates:
    - complianceType: mustonlyhave
      objectDefinition:
        apiVersion: v1
        kind: LimitRange
        metadata:
          name:
        spec:
          limits:
          - default:
              memory:
            defaultRequest:
              memory:
            type:
  ...

```

#### 2.6.4.2. Memory usage policy table

Table 2.8. Parameter table

Field	Optional or required	Description
<b>apiVersion</b>	Required	Set the value to <b>policy.open-cluster-management.io/v1</b> .
<b>kind</b>	Required	Set the value to <b>Policy</b> to indicate the type of policy.

Field	Optional or required	Description
<b>metadata.name</b>	Required	The name for identifying the policy resource.
<b>metadata.namespace</b>	Required	The namespace of the policy.
<b>spec.remediationAction</b>	Optional	Specifies the remediation of your policy. The parameter values are <b>enforce</b> and <b>inform</b> . This value is optional because the value overrides any values provided in <b>spec.policy-templates</b> .
<b>spec.disabled</b>	Required	Set the value to <b>true</b> or <b>false</b> . The <b>disabled</b> parameter provides the ability to enable and disable your policies.
<b>spec.policy-templates[].objectDefinition</b>	Required	Used to list configuration policies containing Kubernetes objects that must be evaluated or applied to the managed clusters.

### 2.6.4.3. Memory usage policy sample

See the [policy-limitmemory.yaml](#) to view a sample of the policy. See [Managing security policies](#) for more details. Refer to the [Policy overview](#) documentation, and to [Kubernetes configuration policy controller](#) to view other configuration policies that are monitored by the controller.

### 2.6.5. Pod security policy (Deprecated)

The Kubernetes configuration policy controller monitors the status of the pod security policy. Apply a pod security policy to secure pods and containers.

Learn more details about the pod security policy structure in the following sections:

- [Pod security policy YAML structure](#)
- [Pod security policy table](#)
- [Pod security policy sample](#)

#### 2.6.5.1. Pod security policy YAML structure

```
apiVersion: policy.open-cluster-management.io/v1
kind: Policy
metadata:
  name:
  namespace:
  annotations:
    policy.open-cluster-management.io/standards:
```

```

policy.open-cluster-management.io/categories:
policy.open-cluster-management.io/controls:
policy.open-cluster-management.io/description:
spec:
  remediationAction:
  disabled:
  policy-templates:
    - objectDefinition:
      apiVersion: policy.open-cluster-management.io/v1
      kind: ConfigurationPolicy
      metadata:
        name:
      spec:
        remediationAction:
        severity:
        namespaceSelector:
          exclude:
          include:
          matchLabels:
          matchExpressions:
        object-templates:
          - complianceType:
            objectDefinition:
              apiVersion: policy/v1beta1
              kind: PodSecurityPolicy
              metadata:
                name:
                annotations:
                  seccomp.security.alpha.kubernetes.io/allowedProfileNames:
            spec:
              privileged:
              allowPrivilegeEscalation:
              allowedCapabilities:
              volumes:
              hostNetwork:
              hostPorts:
              hostIPC:
              hostPID:
              runAsUser:
              seLinux:
              supplementalGroups:
              fsGroup:
            ...

```

### 2.6.5.2. Pod security policy table

Table 2.9. Parameter table

Field	Optional or required	Description
<b>apiVersion</b>	Required	Set the value to <b>policy.open-cluster-management.io/v1</b> .

Field	Optional or required	Description
<b>kind</b>	Required	Set the value to <b>Policy</b> to indicate the type of policy.
<b>metadata.name</b>	Required	The name for identifying the policy resource.
<b>metadata.namespace</b>	Required	The namespace of the policy.
<b>spec.remediationAction</b>	Optional	Specifies the remediation of your policy. The parameter values are <b>enforce</b> and <b>inform</b> . This value is optional because the value overrides any values provided in <b>spec.policy-templates</b> .
<b>spec.disabled</b>	Required	Set the value to <b>true</b> or <b>false</b> . The <b>disabled</b> parameter provides the ability to enable and disable your policies.
<b>spec.policy-templates[].objectDefinition</b>	Required	Used to list configuration policies containing Kubernetes objects that must be evaluated or applied to the managed clusters.

### 2.6.5.3. Pod security policy sample

The support of pod security policies is removed from OpenShift Container Platform 4.13 and later, and from Kubernetes v1.25 and later. If you apply a **PodSecurityPolicy** resource, you might receive the following non-compliant message:

```
violation - couldn't find mapping resource with kind PodSecurityPolicy, please check if you have CRD deployed
```

- For more information including the deprecation notice, see *Pod Security Policies* in the [Kubernetes documentation](#).
- See [policy-psp.yaml](#) to view the sample policy. View [Managing configuration policies](#) for more information.
- Refer to the [Policy overview](#) documentation for a full description of the policy YAML structure, and [Kubernetes configuration policy controller](#) to view other configuration policies that are monitored by the controller.

### 2.6.6. Role policy

The Kubernetes configuration policy controller monitors the status of role policies. Define roles in the **object-template** to set rules and permissions for specific roles in your cluster.

Learn more details about the role policy structure in the following sections:

- [Role policy YAML structure](#)
- [Role policy table](#)
- [Role policy sample](#)

### 2.6.6.1. Role policy YAML structure

```

apiVersion: policy.open-cluster-management.io/v1
kind: Policy
metadata:
  name:
  namespace:
  annotations:
    policy.open-cluster-management.io/standards:
    policy.open-cluster-management.io/categories:
    policy.open-cluster-management.io/controls:
    policy.open-cluster-management.io/description:
spec:
  remediationAction:
  disabled:
  policy-templates:
    - objectDefinition:
        apiVersion: policy.open-cluster-management.io/v1
        kind: ConfigurationPolicy
        metadata:
          name:
        spec:
          remediationAction:
          severity:
          namespaceSelector:
            exclude:
            include:
            matchLabels:
            matchExpressions:
          object-templates:
            - complianceType:
                objectDefinition:
                  apiVersion: rbac.authorization.k8s.io/v1
                  kind: Role
                  metadata:
                    name:
                  rules:
                    - apiGroups:
                      resources:
                      verbs:
                    ...

```

### 2.6.6.2. Role policy table

Table 2.10. Parameter table

Field	Optional or required	Description
<b>apiVersion</b>	Required	Set the value to <b>policy.open-cluster-management.io/v1</b> .
<b>kind</b>	Required	Set the value to <b>Policy</b> to indicate the type of policy.
<b>metadata.name</b>	Required	The name for identifying the policy resource.
<b>metadata.namespace</b>	Required	The namespace of the policy.
<b>spec.remediationAction</b>	Optional	Specifies the remediation of your policy. The parameter values are <b>enforce</b> and <b>inform</b> . This value is optional because the value overrides any values provided in <b>spec.policy-templates</b> .
<b>spec.disabled</b>	Required	Set the value to <b>true</b> or <b>false</b> . The <b>disabled</b> parameter provides the ability to enable and disable your policies.
<b>spec.policy-templates[].objectDefinition</b>	Required	Used to list configuration policies containing Kubernetes objects that must be evaluated or applied to the managed clusters.

### 2.6.6.3. Role policy sample

Apply a role policy to set rules and permissions for specific roles in your cluster. For more information on roles, see [Role-based access control](#). View a sample of a role policy, see [policy-role.yaml](#).

To learn how to manage role policies, refer to [Managing configuration policies](#) for more information. See the [Kubernetes configuration policy controller](#) to view other configuration policies that are monitored the controller.

### 2.6.7. Role binding policy

The Kubernetes configuration policy controller monitors the status of your role binding policy. Apply a role binding policy to bind a policy to a namespace in your managed cluster.

Learn more details about the namespace policy structure in the following sections:

- [Role binding policy YAML structure](#)
- [Role binding policy table](#)
- [Role binding policy sample](#)

### 2.6.7.1. Role binding policy YAML structure

```

apiVersion: policy.open-cluster-management.io/v1
kind: Policy
metadata:
  name:
  namespace:
  annotations:
    policy.open-cluster-management.io/standards:
    policy.open-cluster-management.io/categories:
    policy.open-cluster-management.io/controls:
    policy.open-cluster-management.io/description:
spec:
  remediationAction:
  disabled:
  policy-templates:
    - objectDefinition:
      apiVersion: policy.open-cluster-management.io/v1
      kind: ConfigurationPolicy
      metadata:
        name:
      spec:
        remediationAction:
        severity:
        namespaceSelector:
          exclude:
          include:
          matchLabels:
          matchExpressions:
        object-templates:
          - complianceType:
            objectDefinition:
              kind: RoleBinding # role binding must exist
              apiVersion: rbac.authorization.k8s.io/v1
              metadata:
                name:
              subjects:
                - kind:
                  name:
                  apiGroup:
              roleRef:
                kind:
                name:
                apiGroup:
            ...

```

### 2.6.7.2. Role binding policy table

Field	Optional or required	Description
<b>apiVersion</b>	Required	Set the value to <b>policy.open-cluster-management.io/v1</b> .



Field	Optional or required	Description
<b>kind</b>	Required	Set the value to <b>Policy</b> to indicate the type of policy.
<b>metadata.name</b>	Required	The name for identifying the policy resource.
<b>metadata.namespace</b>	Required	The namespace of the policy.
<b>spec.remediationAction</b>	Optional	Specifies the remediation of your policy. The parameter values are <b>enforce</b> and <b>inform</b> . This value is optional since it overrides any values provided in <b>spec.policy-templates</b> .
<b>spec.disabled</b>	Required	Set the value to <b>true</b> or <b>false</b> . The <b>disabled</b> parameter provides the ability to enable and disable your policies.
<b>spec.policy-templates[].objectDefinition</b>	Required	Used to list configuration policies containing Kubernetes objects that must be evaluated or applied to the managed clusters.

### 2.6.7.3. Role binding policy sample

See [policy-rolebinding.yaml](#) to view the policy sample. For a full description of the policy YAML structure and additional fields, see the [Policy overview documentation](#). Refer to [Kubernetes configuration policy controller](#) documentation to learn about other configuration policies.

### 2.6.8. Security Context Constraints policy

The Kubernetes configuration policy controller monitors the status of your Security Context Constraints (SCC) policy. Apply an Security Context Constraints (SCC) policy to control permissions for pods by defining conditions in the policy.

Learn more details about SCC policies in the following sections:

- [SCC policy YAML structure](#)
- [SCC policy table](#)
- [SCC policy sample](#)

#### 2.6.8.1. SCC policy YAML structure

```
apiVersion: policy.open-cluster-management.io/v1
```

```

kind: Policy
metadata:
  name:
  namespace:
  annotations:
    policy.open-cluster-management.io/standards:
    policy.open-cluster-management.io/categories:
    policy.open-cluster-management.io/controls:
    policy.open-cluster-management.io/description:
spec:
  remediationAction:
  disabled:
  policy-templates:
    - objectDefinition:
      apiVersion: policy.open-cluster-management.io/v1
      kind: ConfigurationPolicy
      metadata:
        name:
      spec:
        remediationAction:
        severity:
        namespaceSelector:
          exclude:
          include:
        matchLabels:
        matchExpressions:
      object-templates:
        - complianceType:
          objectDefinition:
            apiVersion: security.openshift.io/v1
            kind: SecurityContextConstraints
            metadata:
              name:
            allowHostDirVolumePlugin:
            allowHostIPC:
            allowHostNetwork:
            allowHostPID:
            allowHostPorts:
            allowPrivilegeEscalation:
            allowPrivilegedContainer:
            fsGroup:
            readOnlyRootFilesystem:
            requiredDropCapabilities:
            runAsUser:
            seLinuxContext:
            supplementalGroups:
            users:
            volumes:
            ...

```

### 2.6.8.2. SCC policy table

Field	Optional or required	Description
<b>apiVersion</b>	Required	Set the value to <b>policy.open-cluster-management.io/v1</b> .
<b>kind</b>	Required	Set the value to <b>Policy</b> to indicate the type of policy.
<b>metadata.name</b>	Required	The name for identifying the policy resource.
<b>metadata.namespace</b>	Required	The namespace of the policy.
<b>spec.remediationAction</b>	Optional	Specifies the remediation of your policy. The parameter values are <b>enforce</b> and <b>inform</b> . This value is optional since it overrides any values provided in <b>spec.policy-templates</b> .
<b>spec.disabled</b>	Required	Set the value to <b>true</b> or <b>false</b> . The <b>disabled</b> parameter provides the ability to enable and disable your policies.
<b>spec.policy-templates[].objectDefinition</b>	Required	Used to list configuration policies containing Kubernetes objects that must be evaluated or applied to the managed clusters.

For explanations on the contents of a SCC policy, see [Managing Security Context Constraints](#) from the OpenShift Container Platform documentation.

### 2.6.8.3. SCC policy sample

Apply a Security context constraints (SCC) policy to control permissions for pods by defining conditions in the policy. For more information see, [Managing Security Context Constraints \(SCC\)](#).

See [policy-scc.yaml](#) to view the policy sample. For a full description of the policy YAML structure and additional fields, see the [Policy overview](#) documentation. Refer to [Kubernetes configuration policy controller](#) documentation to learn about other configuration policies.

### 2.6.9. ETCD encryption policy

Apply the **etcd-encryption** policy to detect, or enable encryption of sensitive data in the ETCD data-store. The Kubernetes configuration policy controller monitors the status of the **etcd-encryption** policy. For more information, see [Encrypting etcd data](#) in the OpenShift Container Platform documentation. **Note:** The ETCD encryption policy only supports Red Hat OpenShift Container Platform 4 and later.

Learn more details about the **etcd-encryption** policy structure in the following sections:

- [ETCD encryption policy YAML structure](#)

- [ETCD encryption policy table](#)
- [ETCD encryption policy sample](#)

### 2.6.9.1. ETCD encryption policy YAML structure

Your **etcd-encryption** policy might resemble the following YAML file:

```

apiVersion: policy.open-cluster-management.io/v1
kind: Policy
metadata:
  name:
  namespace:
  annotations:
    policy.open-cluster-management.io/standards:
    policy.open-cluster-management.io/categories:
    policy.open-cluster-management.io/controls:
    policy.open-cluster-management.io/description:
spec:
  remediationAction:
  disabled:
  policy-templates:
    - objectDefinition:
        apiVersion: policy.open-cluster-management.io/v1
        kind: ConfigurationPolicy
        metadata:
          name:
        spec:
          remediationAction:
          severity:
          object-templates:
            - complianceType:
                objectDefinition:
                  apiVersion: config.openshift.io/v1
                  kind: APIServer
                  metadata:
                    name:
                  spec:
                    encryption:
          ...

```

### 2.6.9.2. ETCD encryption policy table

Table 2.11. Parameter table

Field	Optional or required	Description
<b>apiVersion</b>	Required	Set the value to <b>policy.open-cluster-management.io/v1</b> .
<b>kind</b>	Required	Set the value to <b>Policy</b> to indicate the type of policy.

Field	Optional or required	Description
<b>metadata.name</b>	Required	The name for identifying the policy resource.
<b>metadata.namespace</b>	Required	The namespace of the policy.
<b>spec.remediationAction</b>	Optional	Specifies the remediation of your policy. The parameter values are <b>enforce</b> and <b>inform</b> . This value is optional because it overrides any values provided in <b>spec.policy-templates</b> .
<b>spec.disabled</b>	Required	Set the value to <b>true</b> or <b>false</b> . The <b>disabled</b> parameter provides the ability to enable and disable your policies.
<b>spec.policy-templates[].objectDefinition</b>	Required	Used to list configuration policies containing Kubernetes objects that must be evaluated or applied to the managed clusters.

### 2.6.9.3. ETCD encryption policy sample

See [policy-etcdencryption.yaml](#) for the policy sample. See the [Policy overview](#) documentation and the [Kubernetes configuration policy controller](#) to view additional details on policy and configuration policy fields.

## 2.6.10. Compliance Operator policy

You can use the Compliance Operator to automate the inspection of numerous technical implementations and compare those against certain aspects of industry standards, benchmarks, and baselines. The Compliance Operator is not an auditor. To be compliant or certified with these various standards, you need to engage an authorized auditor such as a Qualified Security Assessor (QSA), Joint Authorization Board (JAB), or other industry recognized regulatory authority to assess your environment.

Recommendations that are generated from the Compliance Operator are based on generally available information and practices regarding such standards, and might assist you with remediations, but actual compliance is your responsibility. Work with an authorized auditor to achieve compliance with a standard.

For the latest updates, see the [Compliance Operator release notes](#).

### 2.6.10.1. Compliance Operator policy overview

You can install the Compliance Operator on your managed cluster by using the Compliance Operator policy. The Compliance operator policy is created as a Kubernetes configuration policy in Red Hat Advanced Cluster Management. OpenShift Container Platform supports the compliance operator policy.

**Note:** The [Compliance operator policy](#) relies on the OpenShift Container Platform Compliance Operator, which is not supported on the IBM Power or IBM Z architectures. See [Understanding the Compliance Operator](#) in the OpenShift Container Platform documentation for more information about the Compliance Operator.

### 2.6.10.2. Compliance operator resources

When you create a compliance operator policy, the following resources are created:

- A compliance operator namespace (**openshift-compliance**) for the operator installation:

```
apiVersion: policy.open-cluster-management.io/v1
kind: ConfigurationPolicy
metadata:
  name: comp-operator-ns
spec:
  remediationAction: inform # will be overridden by remediationAction in parent policy
  severity: high
  object-templates:
  - complianceType: musthave
    objectDefinition:
      apiVersion: v1
      kind: Namespace
      metadata:
        name: openshift-compliance
```

- An operator group (**compliance-operator**) to specify the target namespace:

```
apiVersion: policy.open-cluster-management.io/v1
kind: ConfigurationPolicy
metadata:
  name: comp-operator-operator-group
spec:
  remediationAction: inform # will be overridden by remediationAction in parent policy
  severity: high
  object-templates:
  - complianceType: musthave
    objectDefinition:
      apiVersion: operators.coreos.com/v1
      kind: OperatorGroup
      metadata:
        name: compliance-operator
        namespace: openshift-compliance
      spec:
        targetNamespaces:
        - openshift-compliance
```

- A subscription (**comp-operator-subscription**) to reference the name and channel. The subscription pulls the profile, as a container, that it supports. See the following sample, with the current version replacing **4.x**:

```
apiVersion: policy.open-cluster-management.io/v1
kind: ConfigurationPolicy
metadata:
  name: comp-operator-subscription
```

```

spec:
  remediationAction: inform # will be overridden by remediationAction in parent policy
  severity: high
  object-templates:
  - complianceType: musthave
    objectDefinition:
      apiVersion: operators.coreos.com/v1alpha1
      kind: Subscription
      metadata:
        name: compliance-operator
        namespace: openshift-compliance
      spec:
        channel: "4.x"
        installPlanApproval: Automatic
        name: compliance-operator
        source: redhat-operators
        sourceNamespace: openshift-marketplace

```

After you install the compliance operator policy, the following pods are created: **compliance-operator**, **ocp4**, and **rhcos4**. See a sample of the [policy-compliance-operator-install.yaml](#).

### 2.6.10.3. Additional resources

- For more information, see [Managing the Compliance Operator](#) in the OpenShift Container Platform documentation for more details.
- You can also create and apply the E8 scan policy and OpenShift CIS scan policy, after you have installed the compliance operator. For more information, see [E8 scan policy](#) and [OpenShift CIS scan policy](#).
- To learn about managing compliance operator policies, see [Managing security policies](#) for more details. Refer to [Kubernetes configuration policy controller](#) for more topics about configuration policies.

## 2.6.11. E8 scan policy

An Essential 8 (E8) scan policy deploys a scan that checks the master and worker nodes for compliance with the E8 security profiles. You must install the compliance operator to apply the E8 scan policy.

The E8 scan policy is created as a Kubernetes configuration policy in Red Hat Advanced Cluster Management. OpenShift Container Platform supports the E8 scan policy. For more information, see [Managing the Compliance Operator](#) in the OpenShift Container Platform documentation for more details.

### 2.6.11.1. E8 scan policy resources

When you create an E8 scan policy the following resources are created:

- A **ScanSettingBinding** resource (**e8**) to identify which profiles to scan:

```

apiVersion: policy.open-cluster-management.io/v1
kind: ConfigurationPolicy
metadata:
  name: compliance-suite-e8
spec:

```

```

remediationAction: inform
severity: high
object-templates:
  - complianceType: musthave # this template checks if scan has completed by checking the
    status field
    objectDefinition:
      apiVersion: compliance.openshift.io/v1alpha1
      kind: ScanSettingBinding
      metadata:
        name: e8
        namespace: openshift-compliance
      profiles:
        - apiGroup: compliance.openshift.io/v1alpha1
          kind: Profile
          name: ocp4-e8
        - apiGroup: compliance.openshift.io/v1alpha1
          kind: Profile
          name: rhcos4-e8
      settingsRef:
        apiGroup: compliance.openshift.io/v1alpha1
        kind: ScanSetting
        name: default

```

- A **ComplianceSuite** resource (**compliance-suite-e8**) to verify if the scan is complete by checking the **status** field:

```

apiVersion: policy.open-cluster-management.io/v1
kind: ConfigurationPolicy
metadata:
  name: compliance-suite-e8
spec:
  remediationAction: inform
  severity: high
  object-templates:
    - complianceType: musthave # this template checks if scan has completed by checking the
      status field
      objectDefinition:
        apiVersion: compliance.openshift.io/v1alpha1
        kind: ComplianceSuite
        metadata:
          name: e8
          namespace: openshift-compliance
        status:
          phase: DONE

```

- A **ComplianceCheckResult** resource (**compliance-suite-e8-results**) which reports the results of the scan suite by checking the **ComplianceCheckResult** custom resources (CR):

```

apiVersion: policy.open-cluster-management.io/v1
kind: ConfigurationPolicy
metadata:
  name: compliance-suite-e8-results
spec:
  remediationAction: inform
  severity: high

```



```

object-templates:
- complianceType: mustnothave # this template reports the results for scan suite: e8 by
  looking at ComplianceCheckResult CRs
  objectDefinition:
    apiVersion: compliance.openshift.io/v1alpha1
    kind: ComplianceCheckResult
    metadata:
      namespace: openshift-compliance
    labels:
      compliance.openshift.io/check-status: FAIL
      compliance.openshift.io/suite: e8

```

**Note:** Automatic remediation is supported. Set the remediation action to **enforce** to create **ScanSettingBinding** resource.

See a sample of the [policy-compliance-operator-e8-scan.yaml](#). See [Managing security policies](#) for more information. **Note:** After your E8 policy is deleted, it is removed from your target cluster or clusters.

## 2.6.12. OpenShift CIS scan policy

An OpenShift CIS scan policy deploys a scan that checks the master and worker nodes for compliance with the OpenShift CIS security benchmark. You must install the compliance operator to apply the OpenShift CIS policy.

The OpenShift CIS scan policy is created as a Kubernetes configuration policy in Red Hat Advanced Cluster Management. OpenShift Container Platform supports the OpenShift CIS scan policy. For more information, see [Understanding the Compliance Operator](#) in the OpenShift Container Platform documentation for more details.

### 2.6.12.1. OpenShift CIS resources

When you create an OpenShift CIS scan policy the following resources are created:

- A **ScanSettingBinding** resource (**cis**) to identify which profiles to scan:

```

apiVersion: policy.open-cluster-management.io/v1
kind: ConfigurationPolicy
metadata:
  name: compliance-cis-scan
spec:
  remediationAction: inform
  severity: high
  object-templates:
  - complianceType: musthave # this template creates ScanSettingBinding:cis
    objectDefinition:
      apiVersion: compliance.openshift.io/v1alpha1
      kind: ScanSettingBinding
      metadata:
        name: cis
        namespace: openshift-compliance
      profiles:
      - apiGroup: compliance.openshift.io/v1alpha1
        kind: Profile
        name: ocp4-cis

```

```

- apiGroup: compliance.openshift.io/v1alpha1
  kind: Profile
  name: ocp4-cis-node
  settingsRef:
    apiGroup: compliance.openshift.io/v1alpha1
    kind: ScanSetting
    name: default

```

- A **ComplianceSuite** resource (**compliance-suite-cis**) to verify if the scan is complete by checking the **status** field:

```

apiVersion: policy.open-cluster-management.io/v1
kind: ConfigurationPolicy
metadata:
  name: compliance-suite-cis
spec:
  remediationAction: inform
  severity: high
  object-templates:
    - complianceType: musthave # this template checks if scan has completed by checking the
      status field
    objectDefinition:
      apiVersion: compliance.openshift.io/v1alpha1
      kind: ComplianceSuite
      metadata:
        name: cis
        namespace: openshift-compliance
      status:
        phase: DONE

```

- A **ComplianceCheckResult** resource (**compliance-suite-cis-results**) which reports the results of the scan suite by checking the **ComplianceCheckResult** custom resources (CR):

```

apiVersion: policy.open-cluster-management.io/v1
kind: ConfigurationPolicy
metadata:
  name: compliance-suite-cis-results
spec:
  remediationAction: inform
  severity: high
  object-templates:
    - complianceType: mustnothave # this template reports the results for scan suite: cis by
      looking at ComplianceCheckResult CRs
    objectDefinition:
      apiVersion: compliance.openshift.io/v1alpha1
      kind: ComplianceCheckResult
      metadata:
        namespace: openshift-compliance
      labels:
        compliance.openshift.io/check-status: FAIL
        compliance.openshift.io/suite: cis

```

See a sample of the [policy-compliance-operator-cis-scan.yaml](#) file. For more information on creating policies, see [Managing security policies](#).

### 2.6.13. Image vulnerability policy

Apply the image vulnerability policy to detect if container images have vulnerabilities by leveraging the Container Security Operator. The policy installs the Container Security Operator on your managed cluster if it is not installed.

The image vulnerability policy is checked by the Kubernetes configuration policy controller. For more information about the Security Operator, see the *Container Security Operator* from the [Quay repository](#).

#### Notes:

- Image vulnerability policy is not functional during a disconnected installation.
- The [Image vulnerability policy](#) is not supported on the IBM Power and IBM Z architectures. It relies on the [Quay Container Security Operator](#). There are no **ppc64le** or **s390x** images in the [container-security-operator registry](#).

View the following sections to learn more:

- [Image vulnerability policy YAML structure](#)
- [Image vulnerability policy sample](#)

#### 2.6.13.1. Image vulnerability policy YAML structure

When you create the container security operator policy, it involves the following policies:

- A policy that creates the subscription (**container-security-operator**) to reference the name and channel. This configuration policy must have **spec.remediationAction** set to **enforce** to create the resources. The subscription pulls the profile, as a container, that the subscription supports. View the following example:

```
apiVersion: policy.open-cluster-management.io/v1
kind: ConfigurationPolicy
metadata:
  name: policy-imagemanifestvuln-example-sub
spec:
  remediationAction: enforce # will be overridden by remediationAction in parent policy
  severity: high
  object-templates:
    - complianceType: musthave
      objectDefinition:
        apiVersion: operators.coreos.com/v1alpha1
        kind: Subscription
        metadata:
          name: container-security-operator
          namespace: openshift-operators
        spec:
          # channel: quay-v3.3 # specify a specific channel if desired
          installPlanApproval: Automatic
          name: container-security-operator
          source: redhat-operators
          sourceNamespace: openshift-marketplace
```

- An **inform** configuration policy to audit the **ClusterServiceVersion** to ensure that the container security operator installation succeeded. View the following example:

```

apiVersion: policy.open-cluster-management.io/v1
kind: ConfigurationPolicy
metadata:
  name: policy-imagemanifestvuln-status
spec:
  remediationAction: inform # will be overridden by remediationAction in parent policy
  severity: high
  object-templates:
    - complianceType: musthave
      objectDefinition:
        apiVersion: operators.coreos.com/v1alpha1
        kind: ClusterServiceVersion
        metadata:
          namespace: openshift-operators
        spec:
          displayName: Red Hat Quay Container Security Operator
        status:
          phase: Succeeded # check the CSV status to determine if operator is running or not

```

- An **inform** configuration policy to audit whether any **ImageManifestVuln** objects were created by the image vulnerability scans. View the following example:

```

apiVersion: policy.open-cluster-management.io/v1
kind: ConfigurationPolicy
metadata:
  name: policy-imagemanifestvuln-example-imv
spec:
  remediationAction: inform # will be overridden by remediationAction in parent policy
  severity: high
  namespaceSelector:
    exclude: ["kube-***"]
    include: ["***"]
  object-templates:
    - complianceType: mustnothave # mustnothave any ImageManifestVuln object
      objectDefinition:
        apiVersion: secscan.quay.redhat.com/v1alpha1
        kind: ImageManifestVuln # checking for a Kind

```

### 2.6.13.2. Image vulnerability policy sample

See [policy-imagemanifestvuln.yaml](#). See [Managing security policies](#) for more information. Refer to [Kubernetes configuration policy controller](#) to view other configuration policies that are monitored by the configuration controller.

### 2.6.14. Red Hat OpenShift Platform Plus policy set

Configure and apply the OpenShift Platform Plus policy set (**openshift-plus**) to install Red Hat OpenShift Platform Plus.

The OpenShift Platform Plus policy set contains two **PolicySets** that are deployed. The OpenShift Plus policy set applies multiple policies that are set to install OpenShift Platform Plus products. The Red Hat Advanced Cluster Security secured cluster services and the Compliance Operator are deployed onto all of your OpenShift Container Platform managed clusters.

### 2.6.14.1. Prerequisites

- Install Red Hat OpenShift Container Platform 4.13 or later, on Amazon Web Services (AWS) environment.
- Install Red Hat Advanced Cluster Management for Kubernetes 2.7 or later.
- Install the Policy Generator Kustomize plugin. See the [Policy Generator](#) documentation for more information.

### 2.6.14.2. OpenShift Platform Plus policy set components

When you apply the policy set to the hub cluster, the following OpenShift Platform Plus components are installed:

**Table 2.12. Component table**

Component	Policy	Description
Red Hat Advanced Cluster Security	<b>policy-acs-central-ca-bundle</b>	Policy used to install the central server onto the Red Hat Advanced Cluster Management for Kubernetes hub cluster and the managed clusters.
	<b>policy-acs-central-status</b>	Deployments to receive Red Hat Advanced Cluster Security status.
	<b>policy-acs-operator-central</b>	Configuration for the Red Hat Advanced Cluster Security central operator.
	<b>policy-acs-sync-resources</b>	Policy used to verify that the Red Hat Advanced Cluster Security resources are created.
OpenShift Container Platform	<b>policy-advanced-managed-cluster-status</b>	The managed hub cluster. Manager of the managed cluster.
Compliance operator	<b>policy-compliance-operator-install</b>	Policy used to install the Compliance operator.
Red Hat Quay	<b>policy-config-quay</b>	Configuration policy for Red Hat Quay.
	<b>policy-install-quay</b>	Policy used to install Red Hat Quay.
	<b>policy-quay-status</b>	Installed onto the Red Hat Advanced Cluster Management hub cluster.

Component	Policy	Description
Red Hat Advanced Cluster Management	<b>policy-ocm-observability</b>	Sets up the Red Hat Advanced Cluster Management observability service.
Red Hat OpenShift Data Platform	<b>policy-odf</b>	Available storage for the hub cluster components that is used by Red Hat Advanced Cluster Management observability and Quay.
	<b>policy-odf-status</b>	Policy used to configure the Red Hat OpenShift Data Platform status.

### 2.6.14.3. Additional resources

- See [Installing Red Hat OpenShift Platform Plus by using a policy set](#) .
- Return to [Policy set controller](#).
- View the [openshift-plus policy set sample](#) for all of the policies included in the policy set.

## 2.7. MANAGE GOVERNANCE DASHBOARD

Manage your security policies and policy violations by using the *Governance* dashboard to create, view, and edit your resources. You can create YAML files for your policies from the command line and console. Continue reading for details about the *Governance* dashboard from the console.

### 2.7.1. Governance page

The following tabs are displayed on the *Governance* page *Overview*, *Policy sets*, and *Policies*. Read the following descriptions to know which information is displayed:

- **Overview**  
The following summary cards are displayed from the *Overview* tab: *Policy set violations*, *Policy violations*, *Clusters*, *Categories*, *Controls*, and *Standards*.
- **Policy sets**  
Create and manage hub cluster policy sets.
- **Policies**
  - Create and manage security policies. The table of policies list the following details of a policy: *Name*, *Namespace*, and *Cluster violations* are displayed.
  - You can edit, enable or disable, set remediation to inform or enforce, or remove a policy by selecting the **Actions** icon. You can view the categories and standards of a specific policy by selecting the drop-down arrow to expand the row.
  - Reorder your table columns in the *Manage column* dialog box. Select the *Manage column* icon for the dialog box to be displayed. To reorder your columns, select the *Reorder* icon

and move the column name. For columns that you want to appear in the table, click the checkbox for specific column names and select the **Save** button.

- Complete bulk actions by selecting multiple policies and clicking the **Actions** button. You can also customize your policy table by clicking the **Filter** button. When you select a policy in the table list, the following tabs of information are displayed from the console:
  - *Details*: Select the *Details* tab to view policy details and placement details. In the *Placement* table, the *Compliance* column provides links to view the compliance of the clusters that are displayed.
  - *Results*: Select the *Results* tab to view a table list of all clusters that are associated to the policy.
- From the *Message* column, click the **View details** link to view the template details, template YAML, and related resources. You can also view related resources. Click the **View history** link to view the violation message and a time of the last report.

## 2.7.2. Governance automation configuration

If there is a configured automation for a specific policy, you can select the automation to view more details. View the following descriptions of the schedule frequency options for your automation:

- *Manual run*: Manually set this automation to run once. After the automation runs, it is set to **disabled**. **Note**: You can only select *Manual run* mode when the schedule frequency is disabled.
- *Run once mode*: When a policy is violated, the automation runs one time. After the automation runs, it is set to **disabled**. After the automation is set to **disabled**, you must continue to run the automation manually. When you run *once mode*, the extra variable of **target\_clusters** is automatically supplied with the list of clusters that violated the policy. The Ansible Automation Platform Job template must have **PROMPT ON LAUNCH** enabled for the **EXTRA VARIABLES** section (also known as **extra\_vars**).
- *Run everyEvent mode*: When a policy is violated, the automation runs every time for each unique policy violation per managed cluster. Use the **DelayAfterRunSeconds** parameter to set the minimum seconds before an automation can be restarted on the same cluster. If the policy is violated multiple times during the delay period and kept in the violated state, the automation runs one time after the delay period. The default is 0 seconds and is only applicable for the **everyEvent** mode. When you run **everyEvent** mode, the extra variable of **target\_clusters** and Ansible Automation Platform Job template is the same as *once mode*.
- *Disable automation*: When the scheduled automation is set to **disabled**, the automation does not run until the setting is updated.

The following variables are automatically provided in the **extra\_vars** of the Ansible Automation Platform Job:

- **policy\_name**: The name of the non-compliant root policy that initiates the Ansible Automation Platform job on the hub cluster.
- **policy\_namespace**: The namespace of the root policy.
- **hub\_cluster**: The name of the hub cluster, which is determined by the value in the **clusters DNS** object.

- **policy\_sets:** This parameter contains all associated policy set names of the root policy. If the policy is not within a policy set, the **policy\_set** parameter is empty.
- **policy\_violations:** This parameter contains a list of non-compliant cluster names, and the value is the policy **status** field for each non-compliant cluster.

### 2.7.3. Additional resources

Review the following topics to learn more about creating and updating your security policies:

- [Managing security policies](#)
- [Managing configuration policies](#)
- [Managing gatekeeper policies](#)
- [Configuring Ansible Automation Platform for governance](#)
- [Governance](#)

### 2.7.4. Configuring Ansible Automation Platform for governance

Red Hat Advanced Cluster Management for Kubernetes governance can be integrated with Red Hat Ansible Automation Platform to create policy violation automations. You can configure the automation from the Red Hat Advanced Cluster Management console.

- [Prerequisites](#)
- [Creating a policy violation automation from the console](#)
- [Creating a policy violation automation from the CLI](#)

#### 2.7.4.1. Prerequisites

- Red Hat OpenShift Container Platform 4.13 or later
- You must have Ansible Automation Platform version 3.7.3 or a later version installed. It is best practice to install the latest supported version of Ansible Automation Platform. See [Red Hat Ansible Automation Platform documentation](#) for more details.
- Install the Ansible Automation Platform Resource Operator from the Operator Lifecycle Manager. In the *Update Channel* section, select **stable-2.x-cluster-scoped**. Select the **All namespaces on the cluster (default)** installation mode.  
**Note:** Ensure that the Ansible Automation Platform job template is idempotent when you run it. If you do not have Ansible Automation Platform Resource Operator, you can find it from the Red Hat OpenShift Container Platform *OperatorHub* page.

For more information about installing and configuring Red Hat Ansible Automation Platform, see [Setting up Ansible tasks](#).

#### 2.7.4.2. Creating a policy violation automation from the console

After you log in to your Red Hat Advanced Cluster Management hub cluster, select **Governance** from the navigation menu, and then click on the *Policies* tab to view the policy tables.

Configure an automation for a specific policy by clicking **Configure** in the *Automation* column. You can



create automation when the policy automation panel appears. From the *Ansible credential* section, click the drop-down menu to select an Ansible credential. If you need to add a credential, see [Managing credentials overview](#).

**Note:** This credential is copied to the same namespace as the policy. The credential is used by the **AnsibleJob** resource that is created to initiate the automation. Changes to the Ansible credential in the *Credentials* section of the console is automatically updated.

After a credential is selected, click the Ansible job drop-down list to select a job template. In the *Extra variables* section, add the parameter values from the **extra\_vars** section of the **PolicyAutomation**. Select the frequency of the automation. You can select *Run once mode*, *Run everyEvent mode*, or *Disable automation*.

Save your policy violation automation by selecting **Submit**. When you select the *View Job* link from the Ansible job details side panel, the link directs you to the job template on the *Search* page. After you successfully create the automation, it is displayed in the *Automation* column.

**Note:** When you delete a policy that has an associated policy automation, the policy automation is automatically deleted as part of clean up.

Your policy violation automation is created from the console.

### 2.7.4.3. Creating a policy violation automation from the CLI

Complete the following steps to configure a policy violation automation from the CLI:

1. From your terminal, log in to your Red Hat Advanced Cluster Management hub cluster using the **oc login** command.
2. Find or create a policy that you want to add an automation to. Note the policy name and namespace.
3. Create a **PolicyAutomation** resource using the following sample as a guide:

```
apiVersion: policy.open-cluster-management.io/v1beta1
kind: PolicyAutomation
metadata:
  name: policynamespace-policy-automation
spec:
  automationDef:
    extra_vars:
      your_var: your_value
    name: Policy Compliance Template
    secret: ansible-tower
    type: AnsibleJob
    mode: disabled
  policyRef: policynamespace
```

4. The Automation template name in the previous sample is **Policy Compliance Template**. Change that value to match your job template name.
5. In the **extra\_vars** section, add any parameters you need to pass to the Automation template.
6. Set the mode to either **once**, **everyEvent**, or **disabled**.
7. Set the **policyRef** to the name of your policy.

8. Create a secret in the same namespace as this **PolicyAutomation** resource that contains the Ansible Automation Platform credential. In the previous example, the secret name is **ansible-tower**. Use the [sample from application lifecycle](#) to see how to create the secret.
9. Create the **PolicyAutomation** resource.

**Notes:**

- An immediate run of the policy automation can be initiated by adding the following annotation to the **PolicyAutomation** resource:

```

metadata:
  annotations:
    policy.open-cluster-management.io/rerun: "true"

```

- When the policy is in **once** mode, the automation runs when the policy is non-compliant. The **extra\_vars** variable, named **target\_clusters** is added and the value is an array of each managed cluster name where the policy is non-compliant.
- When the policy is in **everyEvent** mode and the **DelayAfterRunSeconds** exceeds the defined time value, the policy is non-compliant and the automation runs for every policy violation.

## 2.8. TEMPLATE PROCESSING INTRODUCTION

Configuration policies support the inclusion of Golang text templates in the object definitions. These templates are resolved at runtime either on the hub cluster or the target managed cluster using configurations related to that cluster. This gives you the ability to define configuration policies with dynamic content, and inform or enforce Kubernetes resources that are customized to the target cluster.

A configuration policy definition can contain both hub cluster and managed cluster templates. Hub cluster templates are processed first on the hub cluster, then the policy definition with resolved hub cluster templates is propagated to the target clusters. On the managed cluster, the **ConfigurationPolicyController** processes any managed cluster templates in the policy definition and then enforces or verifies the fully resolved object definition.

The template must conform to the Golang template language specification, and the resource definition generated from the resolved template must be a valid YAML. See the Golang documentation about *Package templates* for more information. Any errors in template validation are recognized as policy violations. When you use a custom template function, the values are replaced at runtime.

**Important:**

- If you use hub cluster templates to propagate secrets or other sensitive data, the sensitive data exists in the managed cluster namespace on the hub cluster and on the managed clusters where that policy is distributed. The template content is expanded in the policy, and policies are not encrypted by the OpenShift Container Platform ETCD encryption support. To address this, use **fromSecret** or **copySecretData**, which automatically encrypts the values from the secret, or **protect** to encrypt other values.
- When you add multiline string values such as, certificates, always add **| toRawJson | toLiteral** syntax at the end of the template pipeline to handle line breaks. For example, if you are copying a certificate from a **Secret** resource and including it in a **ConfigMap** resource, your template pipeline might be similar to the following syntax:

```
ca.crt: '{{ fromSecret "openshift-config" "ca-config-map-secret" "ca.crt" | base64dec |
toRawJson | toLiteral }}'
```

The **toRawJson** template function converts the input value to a JSON string with new lines escaped to not affect the YAML structure. The **toLiteral** template function removes the outer single quotes from the output. For example, when templates are processed for the **key: '{{ 'hello\nworld' | toRawJson }}'** template pipeline, the output is **key: "'hello\nworld'"**. The output of the **key: '{{ 'hello\nworld' | toRawJson | toLiteral }}'** template pipeline is **key: "hello\nworld"**.

See the following table for a comparison of hub cluster and managed cluster templates:

## 2.8.1. Comparison of hub cluster and managed cluster templates

Table 2.13. Comparison table

Templates	Hub cluster	Managed cluster
Syntax	Golang text template specification	Golang text template specification
Delimiter	{{hub ... hub}}	{{ ... }}
Context	A <b>.ManagedClusterName</b> variable is available, which at runtime, resolves to the name of the target cluster where the policy is propagated. The <b>.ManagedClusterLabels</b> variable is also available, which resolves to a map of keys and values of the labels on the managed cluster where the policy is propagated.	No context variables
Access control	You can only reference namespaced Kubernetes objects that are in the same namespace as the <b>Policy</b> resource.	You can reference any resource on the cluster.

Templates	Hub cluster	Managed cluster
Functions	<p>A set of template functions that support dynamic access to Kubernetes resources and string manipulation. See <i>Template functions</i> for more information. See the Access control row for lookup restrictions.</p> <p>The <b>fromSecret</b> template function on the hub cluster stores the resulting value as an encrypted string on the replicated policy, in the managed cluster namespace.</p> <p>The equivalent call might use the following syntax: <b>{{hub "(lookup "v1" "Secret" "default" "my-hub-secret").data.message   protect hub}}</b></p>	<p>A set of template functions support dynamic access to Kubernetes resources and string manipulation. See <i>Template functions</i> for more information.</p>
Function output storage	<p>The output of template functions are stored in <b>Policy</b> resource objects in each applicable managed cluster namespace on the hub cluster, before it is synced to the managed cluster. This means that any sensitive results from template functions are readable by anyone with read access to the <b>Policy</b> resource objects on the hub cluster, and read access with <b>ConfigurationPolicy</b> resource objects on the managed clusters. Additionally, if etcd encryption is enabled, the <b>Policy</b> and <b>ConfigurationPolicy</b> resource objects are not encrypted. It is best to carefully consider this when using template functions that return sensitive output (e.g. from a secret).</p>	<p>The output of template functions are not stored in policy related resource objects.</p>
Processing	<p>Processing occurs at runtime on the hub cluster during propagation of replicated policies to clusters. Policies and the hub cluster templates within the policies are processed on the hub cluster only when templates are created or updated.</p>	<p>Processing occurs in the <b>ConfigurationPolicyController</b> on the managed cluster. Policies are processed periodically, which automatically updates the resolved object definition with data in the referenced resources.</p>

Templates	Hub cluster	Managed cluster
Processing errors	Errors from the hub cluster templates are displayed as violations on the managed clusters the policy applies to.	Errors from the managed cluster templates are displayed as violations on the specific target cluster where the violation occurred.

Continue reading the following topics:

- [Template functions](#)
- [Advanced template processing in configuration policies](#)

## 2.8.2. Template functions

Template functions, such as resource-specific and generic **lookup** template functions, are available for referencing Kubernetes resources on the hub cluster (using the `{{hub ... hub}}` delimiters), or on the managed cluster (using the `{{ ... }}` delimiters). See *Template processing* for more details. The resource-specific functions are used for convenience and makes content of the resources more accessible. If you use the generic function, **lookup**, which is more advanced, familiarize yourself with the YAML structure of the resource that is being looked up. In addition to these functions, utility functions such as **base64enc**, **base64dec**, **indent**, **autoindent**, **toInt**, **toBool**, and more are also available.

To conform templates with YAML syntax, templates must be set in the policy resource as strings using quotes or a block character (`|` or `>`). This causes the resolved template value to also be a string. To override this, use **toInt** or **toBool** as the final function in the template to initiate further processing that forces the value to be interpreted as an integer or boolean respectively. Continue reading to view descriptions and examples for some of the custom template functions that are supported:

- [fromSecret](#) function
- [fromConfigMap](#) function
- [fromClusterClaim](#) function
- [lookup](#) function
- [base64enc](#) function
- [base64dec](#) function
- [indent](#) function
- [autoindent](#) function
- [toInt](#) function
- [toBool](#) function
- [protect](#) function
- [toLiteral](#) function
- [copySecretData](#) function

- [copyConfigMapData](#) function
- [Supported Sprig open source functions](#)

### 2.8.2.1. *fromSecret* function

The **fromSecret** function returns the value of the given data key in the secret. View the following syntax for the function:

```
func fromSecret (ns string, secretName string, datakey string) (dataValue string, err error)
```

When you use this function, enter the namespace, name, and data key of a Kubernetes **Secret** resource. You must use the same namespace that is used for the policy when using the function in a hub cluster template. See *Template processing* for more details.

**Note:** When you use this function with hub cluster templates, the output is automatically encrypted using the [protect](#) function.

You receive a policy violation if the Kubernetes **Secret** resource does not exist on the target cluster. If the data key does not exist on the target cluster, the value becomes an empty string. View the following configuration policy that enforces a **Secret** resource on the target cluster. The value for the **PASSWORD** data key is a template that references the secret on the target cluster:

```
apiVersion: policy.open-cluster-management.io/v1
kind: ConfigurationPolicy
metadata:
  name: demo-fromsecret
  namespace: test
spec:
  namespaceSelector:
    exclude:
      - kube-*
    include:
      - default
  object-templates:
    - complianceType: musthave
      objectDefinition:
        apiVersion: v1
        data:
          USER_NAME: YWRtaW4=
          PASSWORD: '{{ fromSecret "default" "localsecret" "PASSWORD" }}'
        kind: Secret
        metadata:
          name: demosecret
          namespace: test
        type: Opaque
      remediationAction: enforce
      severity: low
```

**Important:** When you add multiline string values such as, certificates, always add `| toRawJson |` **toLiteral** syntax at the end of the template pipeline to handle line breaks. For example, if you are copying a certificate from a **Secret** resource and including it in a **ConfigMap** resource, your template pipeline might be similar to the following syntax:

```
ca.crt: '{{ fromSecret "openshift-config" "ca-config-map-secret" "ca.crt" | base64dec | toRawJson | toLiteral }}'
```

The **toRawJson** template function converts the input value to a JSON string with new lines escaped to not affect the YAML structure. The **toLiteral** template function removes the outer single quotes from the output. For example, when templates are processed for the **key: '{{ 'hello\nworld' | toRawJson }}'** template pipeline, the output is **key: "'hello\nworld'"**. The output of the **key: '{{ 'hello\nworld' | toRawJson | toLiteral }}'** template pipeline is **key: "hello\nworld"**.

### 2.8.2.2. *fromConfigmap* function

The **fromConfigMap** function returns the value of the given data key in the ConfigMap. View the following syntax for the function:

```
func fromConfigMap (ns string, configmapName string, datakey string) (dataValue string, err Error)
```

When you use this function, enter the namespace, name, and data key of a Kubernetes **ConfigMap** resource. You must use the same namespace that is used for the policy using the function in a hub cluster template. See *Template processing* for more details. You receive a policy violation if the Kubernetes **ConfigMap** resource does not exist on the target cluster. If the data key does not exist on the target cluster, the value becomes an empty string. View the following configuration policy that enforces a Kubernetes resource on the target managed cluster. The value for the **log-file** data key is a template that retrieves the value of the **log-file** from the ConfigMap, **logs-config** from the **default** namespace, and the **log-level** is set to the data key **log-level**.

```
apiVersion: policy.open-cluster-management.io/v1
kind: ConfigurationPolicy
metadata:
  name: demo-fromcm-lookup
  namespace: test-templates
spec:
  namespaceSelector:
    exclude:
      - kube-*
    include:
      - default
  object-templates:
    - complianceType: musthave
      objectDefinition:
        kind: ConfigMap
        apiVersion: v1
        metadata:
          name: demo-app-config
          namespace: test
        data:
          app-name: sampleApp
          app-description: "this is a sample app"
          log-file: '{{ fromConfigMap "default" "logs-config" "log-file" }}'
          log-level: '{{ fromConfigMap "default" "logs-config" "log-level" }}'
        remediationAction: enforce
      severity: low
```

### 2.8.2.3. *fromClusterClaim* function

The **fromClusterClaim** function returns the value of the **Spec.Value** in the **ClusterClaim** resource. View the following syntax for the function:

```
func fromClusterClaim (clusterclaimName string) (dataValue string, err Error)
```

When you use this function, enter the name of a Kubernetes **ClusterClaim** resource. You receive a policy violation if the **ClusterClaim** resource does not exist. View the following example of the configuration policy that enforces a Kubernetes resource on the target managed cluster. The value for the **platform** data key is a template that retrieves the value of the **platform.open-cluster-management.io** cluster claim. Similarly, it retrieves values for **product** and **version** from the **ClusterClaim**:

```
apiVersion: policy.open-cluster-management.io/v1
kind: ConfigurationPolicy
metadata:
  name: demo-clusterclaims
  namespace: default
spec:
  namespaceSelector:
    exclude:
      - kube-*
    include:
      - default
  object-templates:
    - complianceType: musthave
      objectDefinition:
        kind: ConfigMap
        apiVersion: v1
        metadata:
          name: sample-app-config
          namespace: default
        data:
          # Configuration values can be set as key-value properties
          platform: '{{ fromClusterClaim "platform.open-cluster-management.io" }}'
          product: '{{ fromClusterClaim "product.open-cluster-management.io" }}'
          version: '{{ fromClusterClaim "version.openshift.io" }}'
      remediationAction: enforce
      severity: low
```

#### 2.8.2.4. *lookup* function

The **lookup** function returns the Kubernetes resource as a JSON compatible map. If the requested resource does not exist, an empty map is returned. If the resource does not exist and the value is provided to another template function, you might get the following error: **invalid value; expected string**.

**Note:** Use the **default** template function, so the correct type is provided to later template functions. See the *Supported Sprig open source functions* section.

View the following syntax for the function:

```
func lookup (apiversion string, kind string, namespace string, name string, labelselector ...string)
(value string, err Error)
```



When you use this function, enter the API version, kind, namespace, name, and optional label selectors of the Kubernetes resource. You must use the same namespace that is used for the policy within the hub cluster template. See *Template processing* for more details. For label selector examples, see the reference to the *Kubernetes labels and selectors* documentation, in the *Additional resources* section. View the following example of the configuration policy that enforces a Kubernetes resource on the target managed cluster. The value for the **metrics-url** data key is a template that retrieves the **v1/Service** Kubernetes resource **metrics** from the **default** namespace, and is set to the value of the **Spec.ClusterIP** in the queried resource:

```
apiVersion: policy.open-cluster-management.io/v1
kind: ConfigurationPolicy
metadata:
  name: demo-lookup
  namespace: test-templates
spec:
  namespaceSelector:
    exclude:
      - kube-*
    include:
      - default
  object-templates:
    - complianceType: musthave
      objectDefinition:
        kind: ConfigMap
        apiVersion: v1
        metadata:
          name: demo-app-config
          namespace: test
        data:
          # Configuration values can be set as key-value properties
          app-name: sampleApp
          app-description: "this is a sample app"
          metrics-url: |
            http://{{ (lookup "v1" "Service" "default" "metrics").spec.clusterIP }}:8080
  remediationAction: enforce
  severity: low
```

### 2.8.2.5. *base64enc* function

The **base64enc** function returns a **base64** encoded value of the input **data string**. View the following syntax for the function:

```
func base64enc (data string) (enc-data string)
```

When you use this function, enter a string value. View the following example of the configuration policy that uses the **base64enc** function:

```
apiVersion: policy.open-cluster-management.io/v1
kind: ConfigurationPolicy
metadata:
  name: demo-fromsecret
  namespace: test
spec:
  namespaceSelector:
    exclude:
```

```

- kube-*
include:
- default
object-templates:
- complianceType: musthave
objectDefinition:
...
data:
  USER_NAME: '{{ fromConfigMap "default" "myconfigmap" "admin-user" | base64enc }}'

```

### 2.8.2.6. *base64dec* function

The **base64dec** function returns a **base64** decoded value of the input **enc-data string**. View the following syntax for the function:

```
func base64dec (enc-data string) (data string)
```

When you use this function, enter a string value. View the following example of the configuration policy that uses the **base64dec** function:

```

apiVersion: policy.open-cluster-management.io/v1
kind: ConfigurationPolicy
metadata:
  name: demo-fromsecret
  namespace: test
spec:
  namespaceSelector:
    exclude:
    - kube-*
    include:
    - default
  object-templates:
  - complianceType: musthave
    objectDefinition:
    ...
    data:
      app-name: |
        '{{ ( lookup "v1" "Secret" "testns" "mytestsecret" ) .data.appname } | base64dec }}'

```

### 2.8.2.7. *indent* function

The **indent** function returns the padded **data string**. View the following syntax for the function:

```
func indent (spaces int, data string) (padded-data string)
```

When you use this function, enter a data string with the specific number of spaces. View the following example of the configuration policy that uses the **indent** function:

```

apiVersion: policy.open-cluster-management.io/v1
kind: ConfigurationPolicy
metadata:
  name: demo-fromsecret
  namespace: test

```

```

spec:
  namespaceSelector:
    exclude:
      - kube-*
    include:
      - default
  object-templates:
    - complianceType: musthave
      objectDefinition:
        ...
        data:
          Ca-cert: |
            {{ ( index ( lookup "v1" "Secret" "default" "mycert-tls" ).data "ca.pem" ) | base64dec | indent 4
            }}

```

### 2.8.2.8. *autoindent* function

The **autoindent** function acts like the **indent** function that automatically determines the number of leading spaces based on the number of spaces before the template. View the following example of the configuration policy that uses the **autoindent** function:

```

apiVersion: policy.open-cluster-management.io/v1
kind: ConfigurationPolicy
metadata:
  name: demo-fromsecret
  namespace: test
spec:
  namespaceSelector:
    exclude:
      - kube-*
    include:
      - default
  object-templates:
    - complianceType: musthave
      objectDefinition:
        ...
        data:
          Ca-cert: |
            {{ ( index ( lookup "v1" "Secret" "default" "mycert-tls" ).data "ca.pem" ) | base64dec |
            autoindent }}

```

### 2.8.2.9. *toInt* function

The **toInt** function casts and returns the integer value of the input value. Also, when this is the last function in the template, there is further processing of the source content. This is to ensure that the value is interpreted as an integer by the YAML. View the following syntax for the function:

```
func toInt (input interface{}) (output int)
```

When you use this function, enter the data that needs to be casted as an integer. View the following example of the configuration policy that uses the **toInt** function:

```

apiVersion: policy.open-cluster-management.io/v1
kind: ConfigurationPolicy

```

```

metadata:
  name: demo-template-function
  namespace: test
spec:
  namespaceSelector:
    exclude:
      - kube-*
    include:
      - default
  object-templates:
    - complianceType: musthave
      objectDefinition:
        ...
      spec:
        vlanid: |
          {{ (fromConfigMap "site-config" "site1" "vlan") | toInt }}

```

### 2.8.2.10. *toBool* function

The **toBool** function converts the input string into a boolean, and returns the boolean. Also, when this is the last function in the template, there is further processing of the source content. This is to ensure that the value is interpreted as a boolean by the YAML. View the following syntax for the function:

```
func toBool (input string) (output bool)
```

When you use this function, enter the string data that needs to be converted to a boolean. View the following example of the configuration policy that uses the **toBool** function:

```

apiVersion: policy.open-cluster-management.io/v1
kind: ConfigurationPolicy
metadata:
  name: demo-template-function
  namespace: test
spec:
  namespaceSelector:
    exclude:
      - kube-*
    include:
      - default
  object-templates:
    - complianceType: musthave
      objectDefinition:
        ...
      spec:
        enabled: |
          {{ (fromConfigMap "site-config" "site1" "enabled") | toBool }}

```

### 2.8.2.11. *protect* function

The **protect** function enables you to encrypt a string in a hub cluster policy template. It is automatically decrypted on the managed cluster when the policy is evaluated. View the following example of the configuration policy that uses the **protect** function:

```
apiVersion: policy.open-cluster-management.io/v1
```

```

kind: ConfigurationPolicy
metadata:
  name: demo-template-function
  namespace: test
spec:
  namespaceSelector:
    exclude:
      - kube-*
    include:
      - default
  object-templates:
    - complianceType: musthave
      objectDefinition:
        ...
      spec:
        enabled: |
          {{hub (lookup "v1" "Secret" "default" "my-hub-secret").data.message | protect hub}}

```

In the previous YAML example, there is an existing hub cluster policy template that is defined to use the **lookup** function. On the replicated policy in the managed cluster namespace, the value might resemble the following syntax: **\$ocm\_encrypted:okrrBqt72ol+3WT/0vxeI3vGa+wpLD7Z0ZxFMLvL204=**

Each encryption algorithm used is AES-CBC using 256-bit keys. Each encryption key is unique per managed cluster and is automatically rotated every 30 days.

This ensures that your decrypted value is to never be stored in the policy on the managed cluster.

To force an immediate rotation, delete the **policy.open-cluster-management.io/last-rotated** annotation on the **policy-encryption-key** Secret in the managed cluster namespace on the hub cluster. Policies are then reprocessed to use the new encryption key.

### 2.8.2.12. *toLiteral* function

The **toLiteral** function removes any quotation marks around the template string after it is processed. You can use this function to convert a JSON string from a ConfigMap field to a JSON value in the manifest. Run the following function to remove quotation marks from the **key** parameter value:

```
key: '{{ "[\"10.10.10.10\", \"1.1.1.1\"]" | toLiteral }}'
```

After using the **toLiteral** function, the following update is displayed:

```
key: ["10.10.10.10", "1.1.1.1"]
```

### 2.8.2.13. *copySecretData* function

The **copySecretData** function copies all of the **data** contents of the specified secret. View the following sample of the function:

```

complianceType: musthave
objectDefinition:
  apiVersion: v1
  kind: Secret

```

```

metadata:
  name: my-secret-copy
  data: '{{ copySecretData "default" "my-secret" }}'

```

**Note:** When you use this function with hub cluster templates, the output is automatically encrypted using the [protect function](#).

#### 2.8.2.14. *copyConfigMapData* function

The **copyConfigMapData** function copies all of the **data** content of the specified ConfigMap. View the following sample of the function:

```

complianceType: musthave
objectDefinition:
  apiVersion: v1
  kind: ConfigMap
  metadata:
    name: my-secret-copy
  data: '{{ copyConfigMapData "default" "my-configmap" }}'

```

#### 2.8.2.15. Supported Sprig open source functions

Additionally, Red Hat Advanced Cluster Management supports the following template functions that are included from the **sprig** open source project:

**Table 2.14.** Table of supported, community Sprig functions

Sprig library	Functions
Cryptographic and security	<b>htpasswd</b>
Date	<b>date, mustToDate, now, toDate</b>
Default	<b>default, empty, fromJson, mustFromJson, ternary, toJson, toRawJson</b>
Dictionaries and dict	<b>dig</b>
Integer math	<b>add, mul, div, round, sub</b>
Integer slice	<b>until, untilStep,</b>
Lists	<b>append, concat, has, list, mustAppend, mustHas, mustPrepend, mustSlice, prepend, slice</b>
String functions	<b>cat, contains, hasPrefix, hasSuffix, join, lower, quote, replace, split, splitn, substr, trim, trimAll, trunc, upper</b>
Version comparison	<b>semver, semverCompare</b>

### 2.8.2.16. Additional resources

- See [Template processing](#) for more details.
- See [Advanced template processing in configuration policies](#) for use-cases.
- For label selector examples, see the [Kubernetes labels and selectors](#) documentation.
- Refer to the [Golang documentation - Package templates](#).
- See the [Sprig Function Documentation](#) for more details.

### 2.8.3. Advanced template processing in configuration policies

Use both managed cluster and hub cluster templates to reduce the need to create separate policies for each target cluster or hardcode configuration values in the policy definitions. For security, both resource-specific and the generic lookup functions in hub cluster templates are restricted to the namespace of the policy on the hub cluster.

**Important:** If you use hub cluster templates to propagate secrets or other sensitive data, that causes sensitive data exposure in the managed cluster namespace on the hub cluster and on the managed clusters where that policy is distributed. The template content is expanded in the policy, and policies are not encrypted by the OpenShift Container Platform ETCD encryption support. To address this, use **fromSecret** or **copySecretData**, which automatically encrypts the values from the secret, or **protect** to encrypt other values.

Continue reading for advanced template use-cases:

- [Special annotation for reprocessing](#)
- [Object template processing](#)
- [Bypass template processing](#)

#### 2.8.3.1. Special annotation for reprocessing

Hub cluster templates are resolved to the data in the referenced resources during policy creation, or when the referenced resources are updated.

If you need to manually initiate an update, use the special annotation, **policy.open-cluster-management.io/trigger-update**, to indicate changes for the data referenced by the templates. Any change to the special annotation value automatically initiates template processing. Additionally, the latest contents of the referenced resource are read and updated in the policy definition that is propagated for processing on managed clusters. A way to use this annotation is to increment the value by one each time.

#### 2.8.3.2. Object template processing

Set object templates with a YAML string representation. The **object-template-raw** parameter is an optional parameter that supports advanced templating use-cases, such as if-else and the **range** function. The following example is defined to add the **species-category: mammal** label to any ConfigMap in the **default** namespace that has a **name** key equal to **Sea Otter**:

```
object-templates-raw: |
  {{- range (lookup "v1" "ConfigMap" "default" "").items }}
  {{- if eq .data.name "Sea Otter" }}
```

```

- complianceType: musthave
objectDefinition:
  kind: ConfigMap
  apiVersion: v1
  metadata:
    name: {{ .metadata.name }}
    namespace: {{ .metadata.namespace }}
  labels:
    species-category: mammal
{{- end }}
{{- end }}

```

**Note:** While **spec.object-templates** and **spec.object-templates-raw** are optional, exactly one of the two parameter fields must be set.

View the following policy example that uses advanced templates to create and configure infrastructure **MachineSet** objects for your managed clusters.

```

apiVersion: policy.open-cluster-management.io/v1
kind: ConfigurationPolicy
metadata:
  name: create-infra-machineset
spec:
  remediationAction: enforce
  severity: low
  object-templates-raw: |
    {{- /* Specify the parameters needed to create the MachineSet */ -}}
    {{- $machineset_role := "infra" }}
    {{- $region := "ap-southeast-1" }}
    {{- $zones := list "ap-southeast-1a" "ap-southeast-1b" "ap-southeast-1c" }}
    {{- $infrastructure_id := (lookup "config.openshift.io/v1" "Infrastructure" ""
"cluster").status.infrastructureName }}
    {{- $worker_ms := (index (lookup "machine.openshift.io/v1beta1" "MachineSet" "openshift-
machine-api" "").items 0) }}
    {{- /* Generate the MachineSet for each zone as specified */ -}}
    {{- range $zone := $zones }}
- complianceType: musthave
objectDefinition:
  apiVersion: machine.openshift.io/v1beta1
  kind: MachineSet
  metadata:
    labels:
      machine.openshift.io/cluster-api-cluster: {{ $infrastructure_id }}
    name: {{ $infrastructure_id }}-{{ $machineset_role }}-{{ $zone }}
    namespace: openshift-machine-api
  spec:
    replicas: 1
    selector:
      matchLabels:
        machine.openshift.io/cluster-api-cluster: {{ $infrastructure_id }}
        machine.openshift.io/cluster-api-machineset: {{ $infrastructure_id }}-{{ $machineset_role }}-{{
$zone }}
    template:
      metadata:
        labels:
          machine.openshift.io/cluster-api-cluster: {{ $infrastructure_id }}

```



```

machine.openshift.io/cluster-api-machine-role: {{ $machineset_role }}
machine.openshift.io/cluster-api-machine-type: {{ $machineset_role }}
machine.openshift.io/cluster-api-machineset: {{ $infrastructure_id }}-{{ $machineset_role }}-
{{ $zone }}
spec:
  metadata:
    labels:
      node-role.kubernetes.io/{{ $machineset_role }}: ""
  taints:
    - key: node-role.kubernetes.io/{{ $machineset_role }}
      effect: NoSchedule
  providerSpec:
    value:
      ami:
        id: {{ $worker_ms.spec.template.spec.providerSpec.value.ami.id }}
      apiVersion: awsproviderconfig.openshift.io/v1beta1
      blockDevices:
        - ebs:
            encrypted: true
            iops: 2000
            kmsKey:
              arn: ""
            volumeSize: 500
            volumeType: io1
      credentialsSecret:
        name: aws-cloud-credentials
      deviceIndex: 0
      instanceType: {{ $worker_ms.spec.template.spec.providerSpec.value.instanceType }}
      iamInstanceProfile:
        id: {{ $infrastructure_id }}-worker-profile
      kind: AWSMachineProviderConfig
      placement:
        availabilityZone: {{ $zone }}
        region: {{ $region }}
      securityGroups:
        - filters:
            - name: tag:Name
              values:
                - {{ $infrastructure_id }}-worker-sg
      subnet:
        filters:
          - name: tag:Name
            values:
              - {{ $infrastructure_id }}-private-{{ $zone }}
      tags:
        - name: kubernetes.io/cluster/{{ $infrastructure_id }}
          value: owned
      userDataSecret:
        name: worker-user-data
  {{- end }}

```

### 2.8.3.3. Bypass template processing

You might create a policy that contains a template that is not intended to be processed by Red Hat Advanced Cluster Management. By default, Red Hat Advanced Cluster Management processes all templates.

To bypass template processing for your hub cluster, you must change `{{ template content }}` to ``{{ template content }}``.

Alternatively, you can add the following annotation in the **ConfigurationPolicy** section of your **Policy**: **policy.open-cluster-management.io/disable-templates: "true"**. When this annotation is included, the previous workaround is not necessary. Template processing is bypassed for the **ConfigurationPolicy**.

#### 2.8.3.4. Additional resources

- See [Template functions](#) for more details.
- Return to [Template processing](#).
- See [Kubernetes configuration policy controller](#) for more details.
- Also refer to the [Red Hat OpenShift Container Platform etcd encryption documentation](#) .

## 2.9. MANAGING SECURITY POLICIES

Create a security policy to report and validate your cluster compliance based on your specified security standards, categories, and controls.

View the following sections:

- [Creating a security policy](#)
- [Updating security policies](#)
- [Deleting a security policy](#)
- [Cleaning up resources that are created by policies](#)

### 2.9.1. Creating a security policy

You can create a security policy from the command line interface (CLI) or from the console.

**Required access:** Cluster administrator

**Important:** \* You must define a placement and placement binding to apply your policy to a specific cluster. The **PlacementBinding** resource binds the placement. Enter a valid value for the cluster *Label selector* field to define a **Placement** and **PlacementBinding** resource. \* In order to use a **Placement** resource, a **ManagedClusterSet** resource must be bound to the namespace of the **Placement** resource with a **ManagedClusterSetBinding** resource. Refer to [Creating a ManagedClusterSetBinding resource](#) for additional details.

#### 2.9.1.1. Creating a security policy from the command line interface

Complete the following steps to create a policy from the command line interface (CLI):

1. Create a policy by running the following command:

```
oc create -f policy.yaml -n <policy-namespace>
```

2. Define the template that the policy uses. Edit your YAML file by adding a **policy-templates** field to define a template. Your policy might resemble the following YAML file:

```

apiVersion: policy.open-cluster-management.io/v1
kind: Policy
metadata:
  name: policy1
spec:
  remediationAction: "enforce" # or inform
  disabled: false # or true
  namespaceSelector:
    include:
      - "default"
      - "my-namespace"
  policy-templates:
    - objectDefinition:
        apiVersion: policy.open-cluster-management.io/v1
        kind: ConfigurationPolicy
        metadata:
          name: operator
          # namespace: # will be supplied by the controller via the namespaceSelector
        spec:
          remediationAction: "inform"
          object-templates:
            - complianceType: "musthave" # at this level, it means the role must exist and must
              have the following rules
                apiVersion: rbac.authorization.k8s.io/v1
                kind: Role
                metadata:
                  name: example
                objectDefinition:
                  rules:
                    - complianceType: "musthave" # at this level, it means if the role exists the rule is a
                      musthave
                      apiGroups: ["extensions", "apps"]
                      resources: ["deployments"]
                      verbs: ["get", "list", "watch", "create", "delete", "patch"]

```

3. Define a **PlacementBinding** resource to bind your policy to your **Placement** resource. Your **PlacementBinding** resource might resemble the following YAML sample:

```

apiVersion: policy.open-cluster-management.io/v1
kind: PlacementBinding
metadata:
  name: binding1
placementRef:
  name: placement1
  apiGroup: cluster.open-cluster-management.io
  kind: Placement
subjects:
  - name: policy1
    apiGroup: policy.open-cluster-management.io
    kind: Policy

```

### 2.9.1.1.1. Viewing your security policy from the CLI

Complete the following steps to view your security policy from the CLI:

1. View details for a specific security policy by running the following command:

```
oc get policies.policy.open-cluster-management.io <policy-name> -n <policy-namespace> -o yaml
```

2. View a description of your security policy by running the following command:

```
oc describe policies.policy.open-cluster-management.io <policy-name> -n <policy-namespace>
```

### 2.9.1.2. Creating a cluster security policy from the console

After you log in to your Red Hat Advanced Cluster Management, navigate to the *Governance* page and click **Create policy**. As you create your new policy from the console, a YAML file is also created in the YAML editor. To view the YAML editor, select the toggle at the beginning of the *Create policy* form to enable it.

1. Complete the *Create policy* form, then select the **Submit** button. Your YAML file might resemble the following policy:

```
apiVersion: policy.open-cluster-management.io/v1
kind: Policy
metadata:
  name: policy-pod
  annotations:
    policy.open-cluster-management.io/categories:
'SystemAndCommunicationsProtections,SystemAndInformationIntegrity'
    policy.open-cluster-management.io/controls: 'control example'
    policy.open-cluster-management.io/standards: 'NIST,HIPAA'
    policy.open-cluster-management.io/description:
spec:
  complianceType: musthave
  namespaces:
    exclude: ["kube*"]
    include: ["default"]
    pruneObjectBehavior: None
  object-templates:
  - complianceType: musthave
    objectDefinition:
      apiVersion: v1
      kind: Pod
      metadata:
        name: pod1
      spec:
        containers:
        - name: pod-name
          image: 'pod-image'
          ports:
          - containerPort: 80
      remediationAction: enforce
      disabled: false
```

See the following **PlacementBinding** example:

```

apiVersion: policy.open-cluster-management.io/v1
kind: PlacementBinding
metadata:
  name: binding-pod
placementRef:
  name: placement-pod
  kind: Placement
apiGroup: cluster.open-cluster-management.io
subjects:
- name: policy-pod
  kind: Policy
  apiGroup: policy.open-cluster-management.io

```

See the following **Placement** example:

```

apiVersion: cluster.open-cluster-management.io/v1beta1
kind: Placement
metadata:
  name: placement-pod
spec:
  predicates:
  - requiredClusterSelector:
    labelSelector:
      matchLabels:
        cloud: "IBM"

```

2. **Optional:** Add a description for your policy.
3. Click **Create Policy**. A security policy is created from the console.

### 2.9.1.2.1. Viewing your security policy from the console

View any security policy and the status from the console.

1. Navigate to the *Governance* page to view a table list of your policies. **Note:** You can filter the table list of your policies by selecting the *Policies* tab or *Cluster violations* tab.
2. Select one of your policies to view more details. The *Details*, *Clusters*, and *Templates* tabs are displayed. When the cluster or policy status cannot be determined, the following message is displayed: **No status**.
3. Alternatively, select the *Policies* tab to view the list of policies. Expand a policy row to view the *Description*, *Standards*, *Controls*, and *Categories* details.

### 2.9.1.3. Creating policy sets from the CLI

By default, the policy set is created with no policies or placements. You must create a placement for the policy set and have at least one policy that exists on your cluster. When you create a policy set, you can add numerous policies.

Run the following command to create a policy set from the CLI:

```
oc apply -f <policyset-filename>
```

#### 2.9.1.4. Creating policy sets from the console

1. From the navigation menu, select **Governance**.
2. Select the *Policy sets* tab.
3. Select the **Create policy set** button and complete the form.
4. Add the details for your policy set and select the **Submit** button.

Your policy is listed from the policy table.

### 2.9.2. Updating security policies

Learn to update security policies.

#### 2.9.2.1. Adding a policy to a policy set from the CLI

1. Run the following command to edit your policy set:

```
oc edit policysets <your-policysset-name>
```

2. Add the policy name to the list in the **policies** section of the policy set.
3. Apply your added policy in the placement section of your policy set with the following command:

```
oc apply -f <your-added-policy.yaml>
```

**PlacementBinding** and **Placement** are both created.

**Note:** If you delete the placement binding, the policy is still placed by the policy set.

#### 2.9.2.2. Adding a policy to a policy set from the console

1. Add a policy to the policy set by selecting the *Policy sets* tab.
2. Select the Actions icon and select **Edit**. The *Edit policy set* form appears.
3. Navigate to the *Policies* section of the form to select a policy to add to the policy set.

#### 2.9.2.3. Disabling security policies

Your policy is enabled by default. Disable your policy from the console.

After you log in to your Red Hat Advanced Cluster Management for Kubernetes console, navigate to the *Governance* page to view a table list of your policies.

Select the **Actions** icon > **Disable policy**. The *Disable Policy* dialog box appears.

Click **Disable policy**. Your policy is disabled.

### 2.9.3. Deleting a security policy

Delete a security policy from the CLI or the console.

- Delete a security policy from the CLI:
  - a. Delete a security policy by running the following command:

```
oc delete policies.policy.open-cluster-management.io <policy-name> -n <policy-namespace>
```

After your policy is deleted, it is removed from your target cluster or clusters. Verify that your policy is removed by running the following command: **oc get policies.policy.open-cluster-management.io <policy-name> -n <policy-namespace>**

- Delete a security policy from the console:  
From the navigation menu, click **Governance** to view a table list of your policies. Click the **Actions** icon for the policy you want to delete in the policy violation table.

Click **Remove**. From the *Remove policy* dialog box, click **Remove policy**.

### 2.9.3.1. Deleting policy sets from the console

1. From the *Policy sets* tab, select the **Actions** icon for the policy set. When you click **Delete**, the *Permanently delete Policyset?* dialogue box appears.
2. Click the **Delete** button.

### 2.9.4. Cleaning up resources that are created by policies

Use the **pruneObjectBehavior** parameter in a configuration policy to clean up resources that are created by the policy. When **pruneObjectBehavior** is set, the related objects are only cleaned up after the configuration policy (or parent policy) associated with them is deleted.

View the following descriptions of the values that can be used for the parameter:

- **DeletelfCreated**: Cleans up any resources created by the policy.
- **DeleteAll**: Cleans up all resources managed by the policy.
- **None**: This is the default value and maintains the same behavior from previous releases, where no related resources are deleted.

You can set the value directly in the YAML file as you create a policy from the command line.

From the console, you can select the value in the *Prune Object Behavior* section of the *Policy templates* step.

#### Notes:

- If a policy that installs an operator has the **pruneObjectBehavior** parameter defined, then additional clean up is needed to complete the operator uninstall. You might need to delete the operator **ClusterServiceVersion** object as part of this cleanup.
- As you disable the **config-policy-addon** resource on the managed cluster, the **pruneObjectBehavior** is ignored. To automatically clean up the related resources on the policies, you must remove the policies from the managed cluster before the add-on is disabled.

### 2.9.5. Additional resources

- View more descriptions of the policy YAML files in the [Policy overview](#).
- See [Resources that support support set-based requirements](#) in the Kubernetes documentation for a valid expression.
- View the stable **Policysets**, which require the Policy Generator for deployment, [PolicySets--Stable](#).
- Refer to [Governance](#) for more topics about policies.

## 2.9.6. Managing configuration policies

Learn to create, apply, view, and update your configuration policies.

**Required access:** Administrator or cluster administrator

- [Creating a configuration policy](#)
- [Updating configuration policies](#)
- [Deleting a configuration policy](#)

### 2.9.6.1. Creating a configuration policy

You can create a YAML file for your configuration policy from the command line interface (CLI) or from the console.

If you have an existing Kubernetes manifest, consider using the Policy Generator to automatically include the manifests in a policy. See the [Policy Generator](#) documentation. View the following sections to create a configuration policy:

#### 2.9.6.1.1. Creating a configuration policy from the CLI

Complete the following steps to create a configuration policy from the (CLI):

1. Create a YAML file for your configuration policy. Run the following command:

```
oc create -f configpolicy-1.yaml
```

Your configuration policy might resemble the following policy:

```
apiVersion: policy.open-cluster-management.io/v1
kind: Policy
metadata:
  name: policy-1
  namespace: my-policies
policy-templates:
- apiVersion: policy.open-cluster-management.io/v1
  kind: ConfigurationPolicy
  metadata:
    name: mustonlyhave-configuration
  spec:
    namespaceSelector:
      include: ["default"]
      exclude: ["kube-system"]
```



```
remediationAction: inform
disabled: false
complianceType: mustonlyhave
object-templates:
```

2. Apply the policy by running the following command:

```
oc apply -f <policy-file-name> --namespace=<namespace>
```

3. Verify and list the policies by running the following command:

```
oc get policies.policy.open-cluster-management.io --namespace=<namespace>
```

Your configuration policy is created.

### 2.9.6.1.2. Viewing your configuration policy from the CLI

Complete the following steps to view your configuration policy from the CLI:

1. View details for a specific configuration policy by running the following command:

```
oc get policies.policy.open-cluster-management.io <policy-name> -n <namespace> -o yaml
```

2. View a description of your configuration policy by running the following command:

```
oc describe policies.policy.open-cluster-management.io <name> -n <namespace>
```

### 2.9.6.1.3. Creating a configuration policy from the console

As you create a configuration policy from the console, a YAML file is also created in the YAML editor.

1. Log in to your cluster from the console, and select **Governance** from the navigation menu.
2. Click **Create policy**. Specify the policy you want to create by selecting one of the configuration policies for the specification parameter.
3. Continue with configuration policy creation by completing the policy form. Enter or select the appropriate values for the following fields:
  - Name
  - Specifications
  - Cluster selector
  - Remediation action
  - Standards
  - Categories
  - Controls
4. Click **Create**. Your configuration policy is created.

#### 2.9.6.1.4. Viewing your configuration policy from the console

View any configuration policy and its status from the console.

After you log in to your cluster from the console, select **Governance** to view a table list of your policies.  
**Note:** You can filter the table list of your policies by selecting the *All policies* tab or *Cluster violations* tab.

Select one of your policies to view more details. The *Details*, *Clusters*, and *Templates* tabs are displayed.

#### 2.9.6.2. Updating configuration policies

Learn to update configuration policies by viewing the following section.

##### 2.9.6.2.1. Disabling configuration policies

Disable your configuration policy. Similar to the instructions mentioned earlier, log in and navigate to the *Governance* page to complete the tasks.

1. Select the **Actions** icon for a configuration policy from the table list, then click **Disable**. The *Disable Policy* dialog box appears.
2. Click **Disable policy**.

The policy is disabled, but not deleted.

#### 2.9.6.3. Deleting a configuration policy

Delete a configuration policy from the CLI or the console.

- Delete a configuration policy from the CLI with the following procedure:
  1. Run the following command to delete the policy from your target cluster or clusters:

```
oc delete policies.policy.open-cluster-management.io <policy-name> -n <namespace>
```
  2. Verify that your policy is removed by running the following command:

```
oc get policies.policy.open-cluster-management.io <policy-name> -n <namespace>
```
- Delete a configuration policy from the console with the following procedure:
  1. From the navigation menu, click **Governance** to view a table list of your policies.
  2. Click the **Actions** icon for the policy you want to delete in the policy violation table, then click **Remove**.
  3. From the *Remove policy* dialog box, click **Remove policy**.

Your policy is deleted.

#### 2.9.6.4. Additional resources

- See configuration policy samples that are supported by Red Hat Advanced Cluster Management from the [CM-Configuration-Management folder](#).

- Alternatively, you can refer to the [Table of sample configuration policies](#) to view other configuration policies that are monitored by the controller. For details to manage other policies, refer to [Managing security policies](#).

### 2.9.7. Managing operator policies in disconnected environments

You might need to deploy Red Hat Advanced Cluster Management for Kubernetes policies on Red Hat OpenShift Container Platform clusters that are not connected to the internet (disconnected). If the policies you deploy are used to deploy policies that install an Operator Lifecycle Manager operator, you must follow the procedure for [Mirroring an Operator catalog](#).

Complete the following steps to validate access to the operator images:

1. See [Verify required packages are available](#) to validate that packages you require to use with policies are available. You must validate availability for each image registry used by any managed cluster that the following policies are deployed to:
  - **container-security-operator**
  - **Deprecated: gatekeeper-operator-product**
  - **compliance-operator**
2. See [Configure image content source policies](#) to validate that the sources are available. The image content source policies must exist on each of the disconnected managed clusters and can be deployed using a policy to simplify the process. See the following table of image source locations:

Governance policy type	Image source location
Container security	<b>registry.redhat.io/quay</b>
Compliance	<b>registry.redhat.io/compliance</b>
Gatekeeper	<b>registry.redhat.io/rhacm2</b>

### 2.9.8. Installing Red Hat OpenShift Platform Plus by using a policy set

Continue reading for guidance to apply the Red Hat OpenShift Platform Plus policy set. When you apply the Red Hat OpenShift policy set, the Red Hat Advanced Cluster Security secured cluster services and the Compliance Operator are deployed onto all of your OpenShift Container Platform managed clusters.

#### 2.9.8.1. Prerequisites

Complete the following steps before you apply the policy set:

1. To allow for subscriptions to be applied to your cluster, you must apply the **policy-configure-subscription-admin-hub.yaml** policy and set the remediation action to **enforce**. Copy and paste the following YAML into the YAML editor of the console:

```
apiVersion: policy.open-cluster-management.io/v1
kind: Policy
metadata:
  name: policy-configure-subscription-admin-hub
```

```

annotations:
  policy.open-cluster-management.io/standards: NIST SP 800-53
  policy.open-cluster-management.io/categories: CM Configuration Management
  policy.open-cluster-management.io/controls: CM-2 Baseline Configuration
spec:
  remediationAction: inform
  disabled: false
  policy-templates:
    - objectDefinition:
        apiVersion: policy.open-cluster-management.io/v1
        kind: ConfigurationPolicy
        metadata:
          name: policy-configure-subscription-admin-hub
        spec:
          remediationAction: inform
          severity: low
          object-templates:
            - complianceType: musthave
              objectDefinition:
                apiVersion: rbac.authorization.k8s.io/v1
                kind: ClusterRole
                metadata:
                  name: open-cluster-management:subscription-admin
                rules:
                  - apiGroups:
                      - app.k8s.io
                    resources:
                      - applications
                    verbs:
                      - '*'
                  - apiGroups:
                      - apps.open-cluster-management.io
                    resources:
                      - '*'
                    verbs:
                      - '*'
                  - apiGroups:
                      - ""
                    resources:
                      - configmaps
                      - secrets
                      - namespaces
                    verbs:
                      - '*'
            - complianceType: musthave
              objectDefinition:
                apiVersion: rbac.authorization.k8s.io/v1
                kind: ClusterRoleBinding
                metadata:
                  name: open-cluster-management:subscription-admin
                roleRef:
                  apiGroup: rbac.authorization.k8s.io
                  kind: ClusterRole
                  name: open-cluster-management:subscription-admin
                subjects:
                  - apiGroup: rbac.authorization.k8s.io

```

```

    kind: User
    name: kube:admin
  - apiGroup: rbac.authorization.k8s.io
    kind: User
    name: system:admin
---
apiVersion: policy.open-cluster-management.io/v1
kind: PlacementBinding
metadata:
  name: binding-policy-configure-subscription-admin-hub
placementRef:
  name: placement-policy-configure-subscription-admin-hub
  kind: Placement
  apiGroup: cluster.open-cluster-management.io
subjects:
- name: policy-configure-subscription-admin-hub
  kind: Policy
  apiGroup: policy.open-cluster-management.io
---
apiVersion: cluster.open-cluster-management.io/v1beta1
kind: Placement
metadata:
  name: placement-policy-configure-subscription-admin-hub
spec:
  predicates:
  - requiredClusterSelector:
      labelSelector:
        matchExpressions:
        - {key: name, operator: In, values: ["local-cluster"]}

```

2. To apply the previous YAML from the command line interface, run the following command:

```
oc apply -f policy-configure-subscription-admin-hub.yaml
```

3. Install the Policy Generator customize plugin. Use Kustomize v4.5 or newer. See [Generating a policy to install an Operator](#).
4. Policies are installed to the **policies** namespace. You must bind that namespace to a **ClusterSet**. For example, copy and apply the following example YAML to bind the namespace to the default **ClusterSet**:

```

apiVersion: cluster.open-cluster-management.io/v1beta2
kind: ManagedClusterSetBinding
metadata:
  name: default
  namespace: policies
spec:
  clusterSet: default

```

5. Run the following command to apply the **ManagedClusterSetBinding** resource from the command line interface:

```
oc apply -f managed-cluster.yaml
```

After you meet the prerequisite requirements, you can apply the policy set.

### 2.9.8.2. Applying Red Hat OpenShift Platform Plus policy set

1. Use the **openshift-plus/policyGenerator.yaml** file that includes the prerequisite configuration for Red Hat OpenShift Plus. See [openshift-plus/policyGenerator.yaml](#).
2. Apply the policies to your hub cluster by using the **kustomize** command:

```
kustomize build --enable-alpha-plugins | oc apply -f -
```

**Note:** For any components of OpenShift Platform Plus that you do not want to install, edit the **policyGenerator.yaml** file and remove or comment out the policies for those components.

### 2.9.8.3. Additional resources

- See [Red Hat OpenShift Platform Plus policy set](#) for an overview of the policy set.
- Return to the beginning of the topic, [Installing Red Hat OpenShift Platform Plus by using a policy set](#)

## 2.9.9. Installing an operator by using the *OperatorPolicy* resource (Technology Preview)

To install Operator Lifecycle Manager (OLM) managed operators on your managed clusters, use an **OperatorPolicy** policy template in a **Policy** definition.

### 2.9.9.1. Creating an *OperatorPolicy* resource to install Quay

See the following operator policy sample that installs the latest Quay operator in the **stable-3.11** channel using the Red Hat operator catalog:

```
apiVersion: policy.open-cluster-management.io/v1
kind: Policy
metadata:
  name: install-quay
  namespace: open-cluster-management-global-set
spec:
  disabled: false
  policy-templates:
  - objectDefinition:
      apiVersion: policy.open-cluster-management.io/v1beta1
      kind: OperatorPolicy
      metadata:
        name: install-quay
      spec:
        remediationAction: enforce
        severity: critical
        complianceType: musthave
        subscription:
          channel: stable-3.11
          installPlanApproval: Automatic
          name: quay-operator
          source: redhat-operators
          sourceNamespace: openshift-marketplace
```

After you add the **OperatorPolicy** policy template, the **operatorGroup** and **subscription** objects are

created on the cluster by using the controller. As a result, the rest of the installation is completed by OLM. You can view the health of owned resources in the **.status.Conditions** and **.status.relatedObjects** fields of the **OperatorPolicy** resource on the managed cluster.

To verify the operator policy status, run the following command on the managed cluster:

```
oc -n <managed cluster namespace> get operatorpolicy install-quay
```

### 2.9.9.2. Additional resources

See [Operator policy controller \(Technology Preview\)](#)

## 2.10. POLICY DEPENDENCIES

Dependencies can be used to activate a policy or policy template when the dependency criteria are satisfied. The following fields are checked on the managed cluster, **dependencies** and **extraDependencies**. When a dependency is not met, the template status of the replicated policy template displays more details.

**Required access:** Policy administrator

View the following policy dependency example, where the **ScanSettingBinding** is only created if the **upstream-compliance-operator** policy is already compliant on the managed cluster:

```
apiVersion: policy.open-cluster-management.io/v1
kind: Policy
metadata:
  annotations:
    policy.open-cluster-management.io/categories: CM Configuration Management
    policy.open-cluster-management.io/controls: CM-2 Baseline Configuration
    policy.open-cluster-management.io/standards: NIST SP 800-53
    policy.open-cluster-management.io/description:
  name: moderate-compliance-scan
  namespace: default
spec:
  dependencies:
  - apiVersion: policy.open-cluster-management.io/v1
    compliance: Compliant
    kind: Policy
    name: upstream-compliance-operator
    namespace: default
  disabled: false
  policy-templates:
  - objectDefinition:
    apiVersion: policy.open-cluster-management.io/v1
    kind: ConfigurationPolicy
    metadata:
      name: moderate-compliance-scan
    spec:
      object-templates:
      - complianceType: musthave
        objectDefinition:
          apiVersion: compliance.openshift.io/v1alpha1
          kind: ScanSettingBinding
          metadata:
```

```
name: moderate
namespace: openshift-compliance
profiles:
- apiGroup: compliance.openshift.io/v1alpha1
  kind: Profile
  name: ocp4-moderate
- apiGroup: compliance.openshift.io/v1alpha1
  kind: Profile
  name: ocp4-moderate-node
settingsRef:
  apiGroup: compliance.openshift.io/v1alpha1
  kind: ScanSetting
  name: default
remediationAction: enforce
severity: low
```

**Note:** A dependency cannot be used to apply a policy on one cluster based on the status of a policy in another cluster.

## 2.11. SECURE THE HUB CLUSTER

Secure your Red Hat Advanced Cluster Management for Kubernetes installation by enhancing the hub cluster security. Complete the following steps:

1. Secure Red Hat OpenShift Container Platform. For more information, see [OpenShift Container Platform security and compliance](#).
2. Setup role-based access control (RBAC). For more information, see [Role-based access control](#).
3. Customize certificates, see [Certificates](#).
4. Define your cluster credentials, see [Managing credentials overview](#)
5. Review the policies that are available to help you harden your cluster security. See [Supported policies](#)



## CHAPTER 3. GATEKEEPER OPERATOR

Gatekeeper is a validating webhook with auditing capabilities that can enforce custom resource definition-based policies that are run with the Open Policy Agent (OPA). You can install Gatekeeper on your cluster by using the Gatekeeper operator policy. Gatekeeper constraints can be used to evaluate Kubernetes resource compliance. You can leverage OPA as the policy engine, and use Rego as the policy language.

**Prerequisite:** A Red Hat Advanced Cluster Management for Kubernetes or Red Hat OpenShift Container Platform Plus subscription is required to install Gatekeeper and apply Gatekeeper policies to your cluster. Gatekeeper is supported only on OpenShift Container Platform versions, except version 3.11, supported by the latest version of Red Hat Advanced Cluster Management.

Continue reading to learn more about using the Gatekeeper operator:

[Integrating Gatekeeper constraints and constraint templates](#)[Managing Gatekeeper operator policies](#)

### 3.1. INTEGRATING GATEKEEPER CONSTRAINTS AND CONSTRAINT TEMPLATES

Gatekeeper policies are written by using constraint templates (**ConstraintTemplates**) and constraints. View the following YAML examples that use Gatekeeper constraints in Red Hat Advanced Cluster Management policies:

- **ConstraintTemplates** and constraints: Use the Gatekeeper integration feature by using Red Hat Advanced Cluster Management policies for multicluster distribution of Gatekeeper constraints and Gatekeeper audit results aggregation on the hub cluster. The following example defines a Gatekeeper **ConstraintTemplate** and constraint (**K8sRequiredLabels**) to ensure the **gatekeeper** label is set on all namespaces:

```

apiVersion: policy.open-cluster-management.io/v1
kind: Policy
metadata:
  name: require-gatekeeper-labels-on-ns
spec:
  remediationAction: inform 1
  disabled: false
  policy-templates:
    - objectDefinition:
        apiVersion: templates.gatekeeper.sh/v1beta1
        kind: ConstraintTemplate
        metadata:
          name: k8srequiredlabels
          annotations:
            policy.open-cluster-management.io/severity: low 2
        spec:
          crd:
            spec:
              names:
                kind: K8sRequiredLabels
              validation:
                openAPIV3Schema:
                  properties:
                    labels:
                      type: array

```

```

        items: string
    targets:
    - target: admission.k8s.gatekeeper.sh
      rego: |
        package k8srequiredlabels
        violation[{"msg": msg, "details": {"missing_labels": missing}}] {
          provided := {label | input.review.object.metadata.labels[label]}
          required := {label | label := input.parameters.labels[_]}
          missing := required - provided
          count(missing) > 0
          msg := sprintf("you must provide labels: %v", [missing])
        }
    - objectDefinition:
      apiVersion: constraints.gatekeeper.sh/v1beta1
      kind: K8sRequiredLabels
      metadata:
        name: ns-must-have-gk
        annotations:
          policy.open-cluster-management.io/severity: low 3
      spec:
        enforcementAction: dryrun
        match:
          kinds:
            - apiGroups: [""]
              kinds: ["Namespace"]
        parameters:
          labels: ["gatekeeper"]

```

- 1** Since the **remediationAction** is set to **inform**, the **enforcementAction** field of the Gatekeeper constraint is overridden to **warn**. This means that Gatekeeper detects and warns you about creating or updating a namespace that is missing the **gatekeeper** label. If the policy **remediationAction** is set to **enforce**, the Gatekeeper constraint **enforcementAction** field is overridden to **deny**. In this context, this configuration prevents any user from creating or updating a namespace that is missing the **gatekeeper** label.
- 2** **3** **Optional:** Set a severity value for the **policy.open-cluster-management.io/severity** annotation for each Gatekeeper constraint or constraint template. Valid values are the same as for other Red Hat Advanced Cluster Management policy types: **low**, **medium**, **high**, or **critical**.

With the previous policy, you might receive the following policy status message: **warn - you must provide labels: {"gatekeeper"} (on Namespace default); warn - you must provide labels: {"gatekeeper"} (on Namespace gatekeeper-system)**. Once a policy containing Gatekeeper constraints or **ConstraintTemplates** is deleted, the constraints and **ConstraintTemplates** are also deleted from the managed cluster.

To view the Gatekeeper audit results for a specific managed cluster from the console, navigate to the policy template *Results* page. If search is enabled, view the YAML of the Kubernetes objects that failed the audit.

#### Notes:

- The *Related resources* section is only available when the audit results are generated by Gatekeeper version 3.9 or newer.

- The Gatekeeper audit functionality runs every minute by default. Audit results are sent back to the hub cluster to be viewed in the Red Hat Advanced Cluster Management policy status of the managed cluster.
- **policy-gatekeeper-admission:** Use the **policy-gatekeeper-admission** configuration policy within a Red Hat Advanced Cluster Management policy to check for Kubernetes API requests denied by the gatekeeper admission webhook:

```

apiVersion: policy.open-cluster-management.io/v1
kind: ConfigurationPolicy
metadata:
  name: policy-gatekeeper-admission
spec:
  remediationAction: inform # will be overridden by remediationAction in parent policy
  severity: low
  object-templates:
    - complianceType: mustnothave
      objectDefinition:
        apiVersion: v1
        kind: Event
        metadata:
          namespace: openshift-gatekeeper-system # set it to the actual namespace where
gatekeeper is running if different
          annotations:
            constraint_action: deny
            constraint_kind: K8sRequiredLabels
            constraint_name: ns-must-have-gk
            event_type: violation

```

### 3.1.1. Additional resources

- See [policy-gatekeeper-operator.yaml](#) for more details.
- For more details, see [What is OPA Gatekeeper](#).
- See [Managing configuration policies](#) for more information about managing other policies.
- Refer to [Governance](#) for more topics on the security framework.

## 3.2. MANAGING GATEKEEPER OPERATOR POLICIES

Use the Gatekeeper operator policy to install the Gatekeeper operator and Gatekeeper on a managed cluster. Learn to create, view, and update your Gatekeeper operator policies in the following sections.

**Required access:** Cluster administrator

- [Installing Gatekeeper using a Gatekeeper operator policy](#)
- [Creating a Gatekeeper policy from the console](#)
- [Upgrading Gatekeeper and the Gatekeeper operator](#)
- [Updating Gatekeeper operator policy](#)
- [Deleting Gatekeeper operator policy](#)

- [Uninstalling Gatekeeper policy, Gatekeeper, and Gatekeeper operator policy](#)

### 3.2.1. Installing Gatekeeper using a Gatekeeper operator policy

Use the governance framework to install the Gatekeeper operator. Gatekeeper operator is available in the OpenShift Container Platform catalog. See *Adding Operators to a cluster* in the [OpenShift Container Platform documentation](#) for more information.

Use the configuration policy controller to install the Gatekeeper operator policy. During the install, the operator group and subscription pull the Gatekeeper operator to install it in your managed cluster. Then, the Gatekeeper operator creates a Gatekeeper custom resource to configure Gatekeeper. View the [Gatekeeper operator custom resource](#) sample.

Gatekeeper operator policy is monitored by the Red Hat Advanced Cluster Management configuration policy controller, where **enforce** remediation action is supported. Gatekeeper operator policies are created automatically by the controller when set to **enforce**.

### 3.2.2. Creating a Gatekeeper policy from the console

See the following procedure to create the policy from the console:

1. Install the Gatekeeper policy by creating a policy from the console. Alternatively, you can navigate to the *Additional resources* section for a reference to the sample YAML to deploy **policy-gatekeeper-operator.yaml**.
2. After you log in to your cluster, navigate to the *Governance* page.
3. Select **Create policy**.
4. As you complete the form, select **Gatekeeper Operator** from the *Specifications* field. The parameter values for your policy are automatically populated and the policy is set to **inform** by default.
5. Set your remediation action to **enforce** to install Gatekeeper.

**Note:** Default values are generated by the operator.

#### 3.2.2.1. Gatekeeper operator custom resource

```

apiVersion: operator.gatekeeper.sh/v1alpha1
kind: Gatekeeper
metadata:
  name: gatekeeper
spec:
  audit:
    replicas: 1
    auditEventsInvolvedNamespace: Enabled 1
    logLevel: DEBUG
    auditInterval: 10s
    constraintViolationLimit: 55
    auditFromCache: Enabled
    auditChunkSize: 66
    emitAuditEvents: Enabled
  resources:
    limits:

```

```

cpu: 500m
memory: 150Mi
requests:
cpu: 500m
memory: 130Mi
validatingWebhook: Enabled
mutatingWebhook: Enabled
webhook:
replicas: 3
emitAdmissionEvents: Enabled
admissionEventsInvolvedNamespace: Enabled ②
disabledBuiltins: - http.send
operations: ③
- "CREATE"
- "UPDATE"
- "CONNECT"
failurePolicy: Fail
resources:
limits:
cpu: 480m
memory: 140Mi
requests:
cpu: 400m
memory: 120Mi
nodeSelector:
region: "EMEA"
affinity:
podAffinity:
requiredDuringSchedulingIgnoredDuringExecution:
- labelSelector:
matchLabels:
auditKey: "auditValue"
topologyKey: topology.kubernetes.io/zone
tolerations:
- key: "Example"
operator: "Exists"
effect: "NoSchedule"
podAnnotations:
some-annotation: "this is a test"
other-annotation: "another test"

```

+ <1> Enable the **auditEventsInvolvedNamespace** parameter to manage which namespace audit event to create. As a result, the following argument is added to the Gatekeeper controller deployment, **--audit-events-involved-namespace: true**. <2> Enable the **admissionEventsInvolvedNamespace** parameter to manage which namespace admission event to create. As a result, the following argument is added to the Gatekeeper controller deployment, **--admission-events-involved-namespace: true**. <3> You can use the following values to manage your webhook operations. Use the following values for the **operations** parameter, **"CREATE"**, **"UPDATE"**, **"CONNECT"**, and **"DELETE"**.

### 3.2.2.2. Configuring *auditFromCache* for sync details

The Gatekeeper operator exposes a setting in the custom resource definition within the **auditFromCache** audit, which is disabled by default. If you enable **auditFromCache**, then you need to set **config.gatekeeper.sh** for the sync details. See [Configuring Audit](#) in the Gatekeeper documentation.

The Gatekeeper operator collects resources from constraints that users install and then inserts those resources into the config resource. If resources do not exist, the operator creates config resources.

1. Set **auditFromCache** to **Automatic** in the **Gatekeeper** resource, as displayed in the following example:

```
apiVersion: operator.gatekeeper.sh/v1alpha1
kind: Gatekeeper
metadata:
  name: gatekeeper
spec:
  audit: replicas: 2
    logLevel: DEBUG
    auditFromCache: Automatic
```

See that the Gatekeeper operator adds **syncOnly** parameter section to the config file in the following example:

```
apiVersion: config.gatekeeper.sh/v1alpha1
kind: Config
metadata:
  name: config
  namespace: "openshift-gatekeeper-system"
spec:
  sync:
    syncOnly:
      - group: ""
        version: "v1"
        kind: "Namespace"
      - group: ""
        version: "v1"
        kind: "Pod"
```

2. Get the explanation of the **sync** setting, run the following command from your terminal:

```
oc explain gatekeeper.spec.audit.auditFromCache
```

### 3.2.3. Upgrading Gatekeeper and the Gatekeeper operator

You can upgrade the versions for Gatekeeper and the Gatekeeper operator. When you install the Gatekeeper operator with the Gatekeeper operator policy, notice the value for **installPlanApproval**. The operator upgrades automatically when **installPlanApproval** is set to **Automatic**.

You must approve the upgrade of the Gatekeeper operator manually, for each cluster, when **installPlanApproval** is set to **Manual**.

### 3.2.4. Updating Gatekeeper operator policy

Learn to update the Gatekeeper operator policy by viewing the following section.

#### 3.2.4.1. Viewing Gatekeeper operator policy from the console

View your Gatekeeper operator policy and the status from the console.

After you log in to your cluster from the console, click **Governance** to view a table list of your policies.

**Note:** You can filter the table list of your policies by selecting the *Policies* tab or *Cluster violations* tab.

Select the **policy-gatekeeper-operator** policy to view more details. View the policy violations by selecting the *Clusters* tab.

### 3.2.4.2. Disabling Gatekeeper operator policy

Disable your gatekeeper operator policy.

After you log in to your Red Hat Advanced Cluster Management for Kubernetes console, navigate to the *Governance* page to view a table list of your policies.

Select the **Actions** icon for the **policy-gatekeeper-operator** policy, then click **Disable**. The *Disable Policy* dialog box appears.

Click **Disable policy**. Your **policy-gatekeeper-operator** policy is disabled.

### 3.2.5. Deleting Gatekeeper operator policy

Delete the Gatekeeper operator policy from the CLI or the console.

- Delete Gatekeeper operator policy from the CLI:
  - a. Delete Gatekeeper operator policy by running the following command:

```
oc delete policies.policy.open-cluster-management.io <policy-gatekeeper-operator-name> -n <namespace>
```

After your policy is deleted, it is removed from your target cluster or clusters.

- b. Verify that your policy is removed by running the following command:

```
oc get policies.policy.open-cluster-management.io <policy-gatekeeper-operator-name> -n <namespace>
```

- Delete Gatekeeper operator policy from the console:  
Navigate to the *Governance* page to view a table list of your policies.

Similar to the previous console instructions, click the **Actions** icon for the **policy-gatekeeper-operator** policy. Click **Remove** to delete the policy. From the *Remove policy* dialog box, click **Remove policy**.

Your Gatekeeper operator policy is deleted.

### 3.2.6. Uninstalling Gatekeeper policy, Gatekeeper, and Gatekeeper operator policy

Complete the following steps to uninstall Gatekeeper policy, Gatekeeper, and Gatekeeper operator policy:

1. Remove the Gatekeeper **Constraint** and **ConstraintTemplate** that is applied on your managed cluster:
  - a. Edit your Gatekeeper operator policy. Locate the **ConfigurationPolicy** template that you used to create the Gatekeeper **Constraint** and **ConstraintTemplate**.

- b. Change the value for **complianceType** of the **ConfigurationPolicy** template to **mustnothave**.
    - c. Save and apply the policy.
  2. Remove Gatekeeper instance from your managed cluster:
    - a. Edit your Gatekeeper operator policy. Locate the **ConfigurationPolicy** template that you used to create the Gatekeeper custom resource.
    - b. Change the value for **complianceType** of the **ConfigurationPolicy** template to **mustnothave**.
  3. Remove the Gatekeeper operator that is on your managed cluster:
    - a. Edit your Gatekeeper operator policy. Locate the **ConfigurationPolicy** template that you used to create the Subscription CR.
    - b. Change the value for **complianceType** of the **ConfigurationPolicy** template to **mustnothave**.

Gatekeeper policy, Gatekeeper, and Gatekeeper operator policy are uninstalled.

### 3.2.7. Additional resources

- See [Integrating Gatekeeper constraints and constraint templates](#) for details about Gatekeeper.
- See the [Policy Gatekeeper](#) sample.
- See [Gatekeeper Helm Chart](#) for an explanation of the optional parameters that can be used for the Gatekeeper operator policy.
- For a list of topics to integrate third-party policies with the product, see [Integrate third-party policy controllers](#).



## CHAPTER 4. INTEGRATE THIRD-PARTY POLICY CONTROLLERS

Integrate third-party policies to create custom annotations within the policy templates to specify one or more compliance standards, control categories, and controls.

You can also use the third-party party policies from the [policy-collection/community](#).

Learn to integrate the following third-party policies:

- [Gatekeeper operator](#)
- [Policy Generator](#)

### 4.1. POLICY GENERATOR

The Policy Generator is a part of the Red Hat Advanced Cluster Management for Kubernetes application lifecycle subscription GitOps workflow that generates Red Hat Advanced Cluster Management policies using Kustomize. The Policy Generator builds Red Hat Advanced Cluster Management policies from Kubernetes manifest YAML files, which are provided through a **PolicyGenerator** manifest YAML file that is used to configure it. The Policy Generator is implemented as a Kustomize generator plug-in. For more information on Kustomize, read the *Kustomize documentation*.

View the following sections for more information:

- [Policy Generator capabilities](#)
- [Policy Generator configuration structure](#)
- [Policy Generator configuration reference table](#)

#### 4.1.1. Policy Generator capabilities

The Policy Generator and its integration with the Red Hat Advanced Cluster Management application lifecycle subscription GitOps workflow simplifies the distribution of Kubernetes resource objects to managed OpenShift Container Platform clusters, and Kubernetes clusters through Red Hat Advanced Cluster Management policies.

Use the Policy Generator to complete the following actions:

- Convert any Kubernetes manifest files to Red Hat Advanced Cluster Management configuration policies, including manifests that are created from a Kustomize directory.
- Patch the input Kubernetes manifests before they are inserted into a generated Red Hat Advanced Cluster Management policy.
- Generate additional configuration policies so you can report on Gatekeeper policy violations through Red Hat Advanced Cluster Management for Kubernetes.
- Generate policy sets on the hub cluster.

#### 4.1.2. Policy Generator configuration structure

The Policy Generator is a Kustomize generator plug-in that is configured with a manifest of the **PolicyGenerator** kind and **policy.open-cluster-management.io/v1** API version.

To use the plug-in, start by adding a **generators** section in a **kustomization.yaml** file. View the following example:

```
generators:
- policy-generator-config.yaml
```

The **policy-generator-config.yaml** file that is referenced in the previous example is a YAML file with the instructions of the policies to generate. A simple **PolicyGenerator** configuration file might resemble the following example:

```
apiVersion: policy.open-cluster-management.io/v1
kind: PolicyGenerator
metadata:
  name: config-data-policies
policyDefaults:
  namespace: policies
  policySets: []
policies:
- name: config-data
  manifests:
  - path: configmap.yaml
```

The **configmap.yaml** represents a Kubernetes manifest YAML file to be included in the policy. Alternatively, you can set the path to a Kustomize directory, or a directory with multiple Kubernetes manifest YAML files. View the following example:

```
apiVersion: v1
kind: ConfigMap
metadata:
  name: my-config
  namespace: default
data:
  key1: value1
  key2: value2
```

The generated **Policy**, along with the generated **Placement** and **PlacementBinding** might resemble the following example:

```
apiVersion: cluster.open-cluster-management.io/v1beta1
kind: Placement
metadata:
  name: placement-config-data
  namespace: policies
spec:
  predicates:
  - requiredClusterSelector:
    labelSelector:
      matchExpressions: []
---
apiVersion: policy.open-cluster-management.io/v1
kind: PlacementBinding
metadata:
```

```

name: binding-config-data
namespace: policies
placementRef:
  apiGroup: cluster.open-cluster-management.io
  kind: Placement
  name: placement-config-data
subjects:
- apiGroup: policy.open-cluster-management.io
  kind: Policy
  name: config-data
---
apiVersion: policy.open-cluster-management.io/v1
kind: Policy
metadata:
  annotations:
    policy.open-cluster-management.io/categories: CM Configuration Management
    policy.open-cluster-management.io/controls: CM-2 Baseline Configuration
    policy.open-cluster-management.io/standards: NIST SP 800-53
    policy.open-cluster-management.io/description:
name: config-data
namespace: policies
spec:
  disabled: false
  policy-templates:
  - objectDefinition:
    apiVersion: policy.open-cluster-management.io/v1
    kind: ConfigurationPolicy
    metadata:
      name: config-data
    spec:
      object-templates:
      - complianceType: musthave
        objectDefinition:
          apiVersion: v1
          data:
            key1: value1
            key2: value2
          kind: ConfigMap
          metadata:
            name: my-config
            namespace: default
          remediationAction: inform
          severity: low

```

### 4.1.3. Policy Generator configuration reference table

Note that all the fields in the **policyDefaults** section except for **namespace** can be overridden for each policy, and all the fields in the **policySetDefaults** section can be overridden for each policy set.

Table 4.1. Parameter table

Field	Optional or required	Description
-------	----------------------	-------------

Field	Optional or required	Description
<b>apiVersion</b>	Required	Set the value to <b>policy.open-cluster-management.io/v1</b> .
<b>kind</b>	Required	Set the value to <b>PolicyGenerator</b> to indicate the type of policy.
<b>metadata.name</b>	Required	The name for identifying the policy resource.
<b>placementBindingDefaults.name</b>	Optional	If multiple policies use the same placement, this name is used to generate a unique name for the resulting <b>PlacementBinding</b> , binding the placement with the array of policies that reference it.
<b>policyDefaults</b>	Required	Any default value listed here is overridden by an entry in the policies array except for <b>namespace</b> .
<b>policyDefaults.namespace</b>	Required	The namespace of all the policies.
<b>policyDefaults.complianceType</b>	Optional	Determines the policy controller behavior when comparing the manifest to objects on the cluster. The values that you can use are <b>musthave</b> , <b>mustonlyhave</b> , or <b>mustnothave</b> . The default value is <b>musthave</b> .
<b>policyDefaults.metadataComplianceType</b>	Optional	Overrides <b>complianceType</b> when comparing the manifest metadata section to objects on the cluster. The values that you can use are <b>musthave</b> , and <b>mustonlyhave</b> . The default value is empty ({}), to avoid overriding the <b>complianceType</b> for metadata.
<b>policyDefaults.categories</b>	Optional	Array of categories to be used in the <b>policy.open-cluster-management.io/categories</b> annotation. The default value is <b>CM Configuration Management</b> .

Field	Optional or required	Description
<b>policyDefaults.controls</b>	Optional	Array of controls to be used in the <b>policy.open-cluster-management.io/controls</b> annotation. The default value is <b>CM-2 Baseline Configuration</b> .
<b>policyDefaults.standards</b>	Optional	An array of standards to be used in the <b>policy.open-cluster-management.io/standards</b> annotation. The default value is <b>NIST SP 800-53</b> .
<b>policyDefaults.policyAnnotations</b>	Optional	Annotations that the policy includes in the <b>metadata.annotations</b> section. It is applied for all policies unless specified in the policy. The default value is empty ( <code>{}</code> ).
<b>policyDefaults.configurationPolicyAnnotations</b>	Optional	Key-value pairs of annotations to set on generated configuration policies. For example, you can disable policy templates by defining the following parameter: <b><code>{"policy.open-cluster-management.io/disable-templates": "true"}</code></b> . The default value is empty ( <code>{}</code> ).
<b>policyDefaults.copyPolicyMetadata</b>	Optional	Copies the labels and annotations for all policies and adds them to a replica policy. Set to <b>true</b> by default. If set to <b>false</b> , only the policy framework specific policy labels and annotations are copied to the replicated policy.
<b>policyDefaults.severity</b>	Optional	The severity of the policy violation. The default value is <b>low</b> .
<b>policyDefaults.disabled</b>	Optional	Whether the policy is disabled, meaning it is not propagated and no status as a result. The default value is <b>false</b> to enable the policy.
<b>policyDefaults.remediationAction</b>	Optional	The remediation mechanism of your policy. The parameter values are <b>enforce</b> and <b>inform</b> . The default value is <b>inform</b> .

Field	Optional or required	Description
<b>policyDefaults.namespaceSelector</b>	Required for namespaced objects that do not have a namespace specified	Determines namespaces in the managed cluster that the object is applied to. The <b>include</b> and <b>exclude</b> parameters accept file path expressions to include and exclude namespaces by name. The <b>matchExpressions</b> and <b>matchLabels</b> parameters specify namespaces to include by label. Read the <i>Kubernetes labels and selectors</i> documentation. The resulting list is compiled by using the intersection of results from all parameters.
<b>policyDefaults.evaluationInterval</b>	Optional	Use the parameters <b>compliant</b> and <b>noncompliant</b> to specify the frequency for a policy to be evaluated when in a particular compliance state. When managed clusters have low CPU resources, the evaluation interval can be increased to reduce CPU usage on the Kubernetes API. These are in the format of durations. For example, " <b>1h25m3s</b> " represents 1 hour, 25 minutes, and 3 seconds. These can also be set to "never" to avoid evaluating the policy after it has become a particular compliance state.
<b>policyDefaults.pruneObjectBehavior</b>	Optional	Determines whether objects created or monitored by the policy should be deleted when the policy is deleted. Pruning only takes place if the remediation action of the policy has been set to <b>enforce</b> . Example values are <b>DeleteIfCreated</b> , <b>DeleteAll</b> , or <b>None</b> . The default value is <b>None</b> .
<b>policyDefaults.recordDiff</b>	Optional	Specifies if and where to log the difference between the object on the cluster and the <b>objectDefinition</b> in the policy. Set to <b>Log</b> to log the difference in the controller logs or <b>None</b> to not log the difference. By default, this parameter is empty to not log the difference.

Field	Optional or required	Description
<b>policyDefaults.dependencies</b>	Optional	A list of objects that must be in specific compliance states before this policy is applied. Cannot be specified when <b>policyDefaults.orderPolicies</b> is set to <b>true</b> .
<b>policyDefaults.dependencies[].name</b>	Required	The name of the object being depended on.
<b>policyDefaults.dependencies[].namespace</b>	Optional	The namespace of the object being depended on. The default is the namespace of policies set for the Policy Generator.
<b>policyDefaults.dependencies[].compliance</b>	Optional	The compliance state the object needs to be in. The default value is <b>Compliant</b> .
<b>policyDefaults.dependencies[].kind</b>	Optional	The kind of the object. By default, the kind is set to <b>Policy</b> , but can also be other kinds that have compliance state, such as <b>ConfigurationPolicy</b> .
<b>policyDefaults.dependencies[].apiVersion</b>	Optional	The API version of the object. The default value is <b>policy.open-cluster-management.io/v1</b> .
<b>policyDefaults.description</b>	Optional	The description of the policy you want to create.
<b>policyDefaults.extraDependencies</b>	Optional	A list of objects that must be in specific compliance states before this policy is applied. The dependencies that you define are added to each policy template (for example, <b>ConfigurationPolicy</b> ) separately from the <b>dependencies</b> list. Cannot be specified when <b>policyDefaults.orderManifests</b> is set to <b>true</b> .
<b>policyDefaults.extraDependencies[].name</b>	Required	The name of the object being depended on.

Field	Optional or required	Description
<code>policyDefaults.extraDependencies[].namespace</code>	Optional	The namespace of the object being depended on. By default, the value is set to the namespace of policies set for the Policy Generator.
<code>policyDefaults.extraDependencies[].compliance</code>	Optional	The compliance state the object needs to be in. The default value is <b>Compliant</b> .
<code>policyDefaults.extraDependencies[].kind</code>	Optional	The kind of the object. The default value is to <b>Policy</b> , but can also be other kinds that have a compliance state, such as <b>ConfigurationPolicy</b> .
<code>policyDefaults.extraDependencies[].apiVersion</code>	Optional	The API version of the object. The default value is <b>policy.open-cluster-management.io/v1</b> .
<code>policyDefaults.ignorePending</code>	Optional	Bypass compliance status checks when the Policy Generator is waiting for its dependencies to reach their desired states. The default value is <b>false</b> .
<code>policyDefaults.orderPolicies</code>	Optional	Automatically generate <b>dependencies</b> on the policies so they are applied in the order you defined in the policies list. By default, the value is set to <b>false</b> . Cannot be specified at the same time as <b>policyDefaults.dependencies</b> .
<code>policyDefaults.orderManifests</code>	Optional	Automatically generate <b>extraDependencies</b> on policy templates so that they are applied in the order you defined in the manifests list for that policy. Cannot be specified when <b>policyDefaults consolidateManifests</b> is set to <b>true</b> . Cannot be specified at the same time as <b>policyDefaults.extraDependencies</b> .



Field	Optional or required	Description
<b>policyDefaults consolidateManifests</b>	Optional	This determines if a single configuration policy is generated for all the manifests being wrapped in the policy. If set to <b>false</b> , a configuration policy per manifest is generated. The default value is <b>true</b> .
<b>policyDefaults informGatekeeperPolicies</b> (Deprecated)	Optional	Set <b>informGatekeeperPolicies</b> to false to use Gatekeeper manifests directly without defining it in a configuration policy. When the policy references a violated Gatekeeper policy manifest, an additional configuration policy is generated in order to receive policy violations in Red Hat Advanced Cluster Management. The default value is <b>true</b> .
<b>policyDefaults informKyvernoPolicies</b>	Optional	When the policy references a Kyverno policy manifest, this determines if an additional configuration policy is generated to receive policy violations in Red Hat Advanced Cluster Management, when the Kyverno policy is violated. The default value is <b>true</b> .
<b>policyDefaults policyLabels</b>	Optional	Labels that the policy includes in its <b>metadata.labels</b> section. The <b>policyLabels</b> parameter is applied for all policies unless specified in the policy.
<b>policyDefaults policySets</b>	Optional	Array of policy sets that the policy joins. Policy set details can be defined in the <b>policySets</b> section. When a policy is part of a policy set, a placement binding is not generated for the policy since one is generated for the set. Set <b>policies[].generatePlacementWhenInSet</b> or <b>policyDefaults.generatePlacementWhenInSet</b> to override <b>policyDefaults.policySets</b> .

Field	Optional or required	Description
<b>policyDefaults.generatePolicyPlacement</b>	Optional	Generate placement manifests for policies. Set to <b>true</b> by default. When set to <b>false</b> , the placement manifest generation is skipped, even if a placement is specified.
<b>policyDefaults.generatePlacementWhenInSet</b>	Optional	When a policy is part of a policy set, by default, the generator does not generate the placement for this policy since a placement is generated for the policy set. Set <b>generatePlacementWhenInSet</b> to <b>true</b> to deploy the policy with both policy placement and policy set placement. The default value is <b>false</b> .
<b>policyDefaults.placement</b>	Optional	The placement configuration for the policies. This defaults to a placement configuration that matches all clusters.
<b>policyDefaults.placement.name</b>	Optional	Specifying a name to consolidate placements that contain the same cluster label selectors.
<b>policyDefaults.placement.labelSelector</b>	Optional	Specify a placement by defining a cluster label selector using either <b>key:value</b> , or providing a <b>matchExpressions</b> , <b>matchLabels</b> , or both, with appropriate values. See <b>placementPath</b> to specify an existing file.
<b>policyDefaults.placement.placementName</b>	Optional	Define this parameter to use a placement that already exists on the cluster. A <b>Placement</b> is not created, but a <b>PlacementBinding</b> binds the policy to this <b>Placement</b> .

Field	Optional or required	Description
<b>policyDefaults.placement.placementPath</b>	Optional	To reuse an existing placement, specify the path relative to the location of the <b>kustomization.yaml</b> file. If provided, this placement is used by all policies by default. See <b>labelSelector</b> to generate a new <b>Placement</b> .
<b>policyDefaults.placement.clusterSelector</b> (Deprecated)	Optional	<b>PlacementRule</b> is deprecated. Use <b>labelSelector</b> instead to generate a placement. Specify a placement rule by defining a cluster selector using either <b>key:value</b> or by providing <b>matchExpressions</b> , <b>matchLabels</b> , or both, with appropriate values. See <b>placementRulePath</b> to specify an existing file.
<b>policyDefaults.placement.placementRuleName</b> (Deprecated)	Optional	<b>PlacementRule</b> is deprecated. Alternatively, use <b>placementName</b> to specify a placement. To use an existing placement rule on the cluster, specify the name for this parameter. A <b>PlacementRule</b> is not created, but a <b>PlacementBinding</b> binds the policy to the existing <b>PlacementRule</b> .
<b>policyDefaults.placement.placementRulePath</b> (Deprecated)	Optional	<b>PlacementRule</b> is deprecated. Alternatively, use <b>placementPath</b> to specify a placement. To reuse an existing placement rule, specify the path relative to the location of the <b>kustomization.yaml</b> file. If provided, this placement rule is used by all policies by default. See <b>clusterSelector</b> to generate a new <b>PlacementRule</b> .
<b>policySetDefaults</b>	Optional	Default values for policy sets. Any default value listed for this parameter is overridden by an entry in the <b>policySets</b> array.

Field	Optional or required	Description
<b>policySetDefaults.placement</b>	Optional	The placement configuration for the policies. This defaults to a placement configuration that matches all clusters. See <b>policyDefaults.placement</b> for description of this field.
<b>policySetDefaults.generatePolicySetPlacement</b>	Optional	Generate placement manifests for policy sets. Set to <b>true</b> by default. When set to <b>false</b> the placement manifest generation is skipped, even if a placement is specified.
<b>policies</b>	Required	The list of policies to create along with overrides to either the default values, or the values that are set in <b>policyDefaults</b> . See <b>policyDefaults</b> for additional fields and descriptions.
<b>policies.description</b>	Optional	The description of the policy you want to create.
<b>policies[].name</b>	Required	The name of the policy to create.
<b>policies[].manifests</b>	Required	The list of Kubernetes object manifests to include in the policy, along with overrides to either the default values, the values set in this <b>policies</b> item, or the values set in <b>policyDefaults</b> . See <b>policyDefaults</b> for additional fields and descriptions. When <b>consolidateManifests</b> is set to <b>true</b> , only <b>complianceType</b> , <b>metadataComplianceType</b> , and <b>recordDiff</b> can be overridden at the <b>policies[].manifests</b> level.

Field	Optional or required	Description
<b>policies[].manifests[].path</b>	Required	Path to a single file, a flat directory of files, or a Kustomize directory relative to the <b>kustomization.yaml</b> file. If the directory is a Kustomize directory, the generator runs Kustomize against the directory before generating the policies. If there is a requirement to process Helm charts for the Kustomize directory, set <b>POLICY_GEN_ENABLE_HELM</b> to "true" in the environment where the policy generator is running to enable Helm for the policy generator.
<b>policies[].manifests[].patches</b>	Optional	A list of Kustomize patches to apply to the manifest at the path. If there are multiple manifests, the patch requires the <b>apiVersion</b> , <b>kind</b> , <b>metadata.name</b> , and <b>metadata.namespace</b> (if applicable) fields to be set so Kustomize can identify the manifest that the patch applies to. If there is a single manifest, the <b>metadata.name</b> and <b>metadata.namespace</b> fields can be patched.
<b>policies.policyLabels</b>	Optional	Labels that the policy includes in its <b>metadata.labels</b> section. The <b>policyLabels</b> parameter is applied for all policies unless specified in the policy.
<b>policySets</b>	Optional	The list of policy sets to create, along with overrides to either the default values or the values that are set in <b>policySetDefaults</b> . To include a policy in a policy set, use <b>policyDefaults.policySets</b> , <b>policies[].policySets</b> , or <b>policySets.policies</b> . See <b>policySetDefaults</b> for additional fields and descriptions.
<b>policySets[].name</b>	Required	The name of the policy set to create.

Field	Optional or required	Description
<b>policySets[].description</b>	Optional	The description of the policy set to create.
<b>policySets[].policies</b>	Optional	The list of policies to be included in the policy set. If <b>policyDefaults.policySets</b> or <b>policies[].policySets</b> is also specified, the lists are merged.

#### 4.1.4. Additional resources

- Read [Generating a policy to install GitOps Operator](#) .
- Read to [Policy set controller](#) for more details.
- Read [Applying Kustomize](#) for more information.
- Read the [Governance](#) documentation for more topics.
- See an example of a [kustomization.yaml](#) file.
- Refer to the [Kubernetes labels and selectors](#) documentation.
- Refer [Gatekeeper](#) for more details.
- Refer to the [Kustomize documentation](#).
- Return to the [Integrate third-party policy controllers](#) documentation.

## 4.2. GENERATING A POLICY THAT INSTALLS THE COMPLIANCE OPERATOR

Generate a policy that installs the Compliance Operator onto your clusters. For an operator that uses the *namespaced* installation mode, such as the Compliance Operator, an **OperatorGroup** manifest is also required.

Complete the following steps:

1. Create a YAML file with a **Namespace**, a **Subscription**, and an **OperatorGroup** manifest called **compliance-operator.yaml**. The following example installs these manifests in the **compliance-operator** namespace:

```

apiVersion: v1
kind: Namespace
metadata:
  name: openshift-compliance
---
apiVersion: operators.coreos.com/v1
kind: OperatorGroup
metadata:

```

```

name: compliance-operator
namespace: openshift-compliance
spec:
  targetNamespaces:
    - openshift-compliance
---
apiVersion: operators.coreos.com/v1alpha1
kind: Subscription
metadata:
  name: compliance-operator
  namespace: openshift-compliance
spec:
  channel: release-0.1
  name: compliance-operator
  source: redhat-operators
  sourceNamespace: openshift-marketplace

```

2. Create a **PolicyGenerator** configuration file. View the following **PolicyGenerator** policy example that installs the Compliance Operator on all OpenShift Container Platform managed clusters:

```

apiVersion: policy.open-cluster-management.io/v1
kind: PolicyGenerator
metadata:
  name: install-compliance-operator
policyDefaults:
  namespace: policies
  placement:
    labelSelector:
      matchExpressions:
        - key: vendor
          operator: In
          values:
            - "OpenShift"
  policies:
    - name: install-compliance-operator
  manifests:
    - path: compliance-operator.yaml

```

3. Add the policy generator to your **kustomization.yaml** file. The **generators** section might resemble the following configuration:

```

generators:
  - policy-generator-config.yaml

```

As a result, the generated policy resembles the following file:

```

apiVersion: cluster.open-cluster-management.io/v1beta1
kind: Placement
metadata:
  name: placement-install-compliance-operator
  namespace: policies
spec:
  predicates:
    - requiredClusterSelector:

```

```

labelSelector:
  matchExpressions:
  - key: vendor
    operator: In
    values:
    - OpenShift
---
apiVersion: policy.open-cluster-management.io/v1
kind: PlacementBinding
metadata:
  name: binding-install-compliance-operator
  namespace: policies
placementRef:
  apiGroup: cluster.open-cluster-management.io
  kind: Placement
  name: placement-install-compliance-operator
subjects:
- apiGroup: policy.open-cluster-management.io
  kind: Policy
  name: install-compliance-operator
---
apiVersion: policy.open-cluster-management.io/v1
kind: Policy
metadata:
  annotations:
    policy.open-cluster-management.io/categories: CM Configuration Management
    policy.open-cluster-management.io/controls: CM-2 Baseline Configuration
    policy.open-cluster-management.io/standards: NIST SP 800-53
    policy.open-cluster-management.io/description:
  name: install-compliance-operator
  namespace: policies
spec:
  disabled: false
  policy-templates:
  - objectDefinition:
    apiVersion: policy.open-cluster-management.io/v1
    kind: ConfigurationPolicy
    metadata:
      name: install-compliance-operator
    spec:
      object-templates:
      - complianceType: musthave
        objectDefinition:
          apiVersion: v1
          kind: Namespace
          metadata:
            name: openshift-compliance
      - complianceType: musthave
        objectDefinition:
          apiVersion: operators.coreos.com/v1alpha1
          kind: Subscription
          metadata:
            name: compliance-operator
            namespace: openshift-compliance
    spec:
      channel: release-0.1

```



```
name: compliance-operator
source: redhat-operators
sourceNamespace: openshift-marketplace
- complianceType: musthave
objectDefinition:
  apiVersion: operators.coreos.com/v1
  kind: OperatorGroup
  metadata:
    name: compliance-operator
    namespace: openshift-compliance
  spec:
    targetNamespaces:
      - compliance-operator
remediationAction: enforce
severity: low
```

As a result, the generated policy is displayed.