



Red Hat Gluster Storage 3.1 Installation Guide

Installing Red Hat Gluster Storage 3.1

Bhavana Mohanraj

Anjana Suparna Sriram Divya Muntimadugu

Red Hat Gluster Storage 3.1 Installation Guide

Installing Red Hat Gluster Storage 3.1

Bhavana Mohanraj
Red Hat Engineering Content Services
bmohanra@redhat.com

Anjana Suparna Sriram
Red Hat Engineering Content Services
asriram@redhat.com

Divya Muntimadugu
Red Hat Engineering Content Services
divya@redhat.com

Legal Notice

Copyright © 2015-2016 Red Hat, Inc.

This document is licensed by Red Hat under the [Creative Commons Attribution-ShareAlike 3.0 Unported License](https://creativecommons.org/licenses/by-sa/3.0/). If you distribute this document, or a modified version of it, you must provide attribution to Red Hat, Inc. and provide a link to the original. If the document is modified, all Red Hat trademarks must be removed.

Red Hat, as the licensor of this document, waives the right to enforce, and agrees not to assert, Section 4d of CC-BY-SA to the fullest extent permitted by applicable law.

Red Hat, Red Hat Enterprise Linux, the Shadowman logo, JBoss, OpenShift, Fedora, the Infinity logo, and RHCE are trademarks of Red Hat, Inc., registered in the United States and other countries.

Linux ® is the registered trademark of Linus Torvalds in the United States and other countries.

Java ® is a registered trademark of Oracle and/or its affiliates.

XFS ® is a trademark of Silicon Graphics International Corp. or its subsidiaries in the United States and/or other countries.

MySQL ® is a registered trademark of MySQL AB in the United States, the European Union and other countries.

Node.js ® is an official trademark of Joyent. Red Hat Software Collections is not formally related to or endorsed by the official Joyent Node.js open source or commercial project.

The OpenStack ® Word Mark and OpenStack logo are either registered trademarks/service marks or trademarks/service marks of the OpenStack Foundation, in the United States and other countries and are used with the OpenStack Foundation's permission. We are not affiliated with, endorsed or sponsored by the OpenStack Foundation, or the OpenStack community.

All other trademarks are the property of their respective owners.

Abstract

This guide describes the prerequisites and provides step-by-instructions to install Red Hat Gluster Storage using different methods.

Table of Contents

Chapter 1. Planning Red Hat Gluster Storage	3
1.1. About Red Hat Gluster Storage	3
1.2. Prerequisites	3
1.3. Hardware Compatibility	4
1.4. Port Information	5
1.5. Supported Versions of Red Hat Gluster Storage	6
Chapter 2. Installing Red Hat Gluster Storage	7
2.1. Obtaining Red Hat Gluster Storage	7
2.2. Installing from an ISO Image	8
2.3. Installing Red Hat Gluster Storage Server on Red Hat Enterprise Linux (Layered Install)	14
2.4. Installing from a PXE Server	17
2.5. Installing from Red Hat Satellite Server	17
2.6. Subscribing to the Red Hat Gluster Storage Server Channels	20
2.7. Managing the glusterd Service	23
2.8. Installing Ansible to Support gdeploy	23
Chapter 3. Deploying Samba on Red Hat Gluster Storage	25
3.1. Prerequisites	25
3.2. Installing Samba Using ISO	26
3.3. Installing Samba Using yum	26
Chapter 4. Deploying NFS-Ganesha on Red Hat Gluster Storage	28
4.1. Prerequisites	28
4.2. Installing NFS-Ganesha during an ISO Installation	29
4.3. Installing NFS-Ganesha using yum	29
Chapter 5. Deploying gstatus on Red Hat Gluster Storage	30
5.1. Installing gstatus during an ISO Installation	30
5.2. Installing using yum or the Red Hat Satellite Server or Red Hat Network	30
Chapter 6. Deploying Containerized Red Hat Gluster Storage with Atomic Host	31
6.1. Supported Deployment Configuration	31
6.2. Supported Versions	31
6.3. Downloading the Red Hat Gluster Storage Image from the Red Hat Registry	31
Chapter 7. Deploying the Hortonworks Data Platform 2.1 on Red Hat Gluster Storage	33
7.1. Prerequisites	33
7.2. Installing the Hadoop FileSystem Plugin for Red Hat Gluster Storage	38
7.3. Adding and Removing Users	47
7.4. Disabling a Volume for use with Hadoop	47
7.5. Verifying the Configuration	48
7.6. Troubleshooting	49
Chapter 8. Updating to Red Hat Gluster Storage 3.1.x	51
8.1. Updating Red Hat Gluster Storage from 3.0.x to 3.1.x in the Offline Mode	51
8.2. Updating NFS-Ganesha in the Offline Mode	53
8.3. In-service Software Update to Red Hat Gluster Storage 3.1.x from 3.y.z	55
Chapter 9. Upgrading from Red Hat Gluster Storage 2.1.x to Red Hat Gluster Storage 3.1	59
9.1. Offline Upgrade from Red Hat Gluster Storage 2.1.x to Red Hat Gluster Storage 3.1	59
9.2. In-Service Software Upgrade to Upgrade from Red Hat Gluster Storage 2.1.x to Red Hat Gluster Storage 3.1	71
Chapter 10. Upgrading from Red Hat Gluster Storage 3.0 to Red Hat Gluster Storage 3.1 in a Red Hat	

Chapter 10. Upgrading from Red Hat Gluster Storage 3.0 to Red Hat Gluster Storage 3.1 in a Red Hat Enterprise Virtualization-Red Hat Gluster Storage Environment	86
10.1. Upgrading using an ISO	86
10.2. Upgrading using yum	88
Chapter 11. Enabling SELinux	90
Chapter 12. Using the Gluster Command Line Interface	92
Appendix A. Revision History	94

Chapter 1. Planning Red Hat Gluster Storage Installation

This chapter outlines the minimum hardware and software installation requirements for a successful installation, configuration, and operation of a Red Hat Gluster Storage Server environment.

1.1. About Red Hat Gluster Storage

Red Hat Gluster Storage is a software-only, scale-out storage that provides flexible and affordable unstructured data storage for the enterprise. Red Hat Gluster Storage 3.1 provides new opportunities to unify data storage and infrastructure, increase performance, and improve availability and manageability in order to meet a broader set of an organization's storage challenges and requirements.

GlusterFS, a key building block of Red Hat Gluster Storage, is based on a stackable user space design and can deliver exceptional performance for diverse workloads. GlusterFS aggregates various storage servers over network interconnects into one large parallel network file system. The POSIX compatible GlusterFS servers, which use XFS file system format to store data on disks, can be accessed using industry standard access protocols including NFS and CIFS.

Red Hat Gluster Storage can be deployed in the private cloud or datacenter using Red Hat Gluster Storage Server for On-Premise. Red Hat Gluster Storage can be installed on commodity servers and storage hardware resulting in a powerful, massively scalable, and highly available NAS environment. Additionally, Red Hat Gluster Storage can be deployed in the public cloud using Red Hat Gluster Storage Server for Public Cloud, for example, within the Amazon Web Services (AWS) cloud. It delivers all the features and functionality possible in a private cloud or datacenter to the public cloud by providing massively scalable and highly available NAS in the cloud.

Red Hat Gluster Storage Server for On-Premise

Red Hat Gluster Storage Server for On-Premise enables enterprises to treat physical storage as a virtualized, scalable, and centrally managed pool of storage by using commodity server and storage hardware.

Red Hat Gluster Storage Server for Public Cloud

Red Hat Gluster Storage Server for Public Cloud packages GlusterFS as an Amazon Machine Image (AMI) for deploying scalable NAS in the AWS public cloud. This powerful storage server provides a highly available, scalable, virtualized, and centrally managed pool of storage for Amazon users.

1.2. Prerequisites

Ensure that your environment meets the following requirements.

File System Requirements

XFS - Format the back-end file system using XFS for glusterFS bricks. XFS can journal metadata, resulting in faster crash recovery. The XFS file system can also be defragmented and expanded while mounted and active.



Note

Red Hat assists existing Gluster Storage Software Appliance customers using **ext3** or **ext4** to upgrade to a supported version of Red Hat Gluster Storage using the XFS back-end file system.

Logical Volume Manager

Format glusterFS bricks using XFS on the Logical Volume Manager to prepare for the installation.

Network Time Configuration

- Synchronize time across all Red Hat Gluster Storage servers using the Network Time Protocol (NTP) daemon.

1.2.1. Network Time Protocol Setup

Use a remote server over the Network Time Protocol (NTP) to synchronize the system clock. Set the **ntpd** daemon to automatically synchronize the time during the boot process as follows:

1. Edit the NTP configuration file **/etc/ntp.conf** using a text editor such as vim or nano.

```
# nano /etc/ntp.conf
```

2. Add or edit the list of public NTP servers in the **ntp.conf** file as follows:

```
server 0.rhel.pool.ntp.org
server 1.rhel.pool.ntp.org
server 2.rhel.pool.ntp.org
```

The Red Hat Enterprise Linux 6 version of this file already contains the required information. Edit the contents of this file if customization is required.

3. Optionally, increase the initial synchronization speed by appending the **iburst** directive to each line:

```
server 0.rhel.pool.ntp.org iburst
server 1.rhel.pool.ntp.org iburst
server 2.rhel.pool.ntp.org iburst
```

4. After the list of servers is complete, set the required permissions in the same file. Ensure that only **localhost** has unrestricted access:

```
restrict default kod nomodify notrap nopeer noquery
restrict -6 default kod nomodify notrap nopeer noquery
restrict 127.0.0.1
restrict -6 ::1
```

5. Save all changes, exit the editor, and restart the NTP daemon:

```
# service ntpd restart
```

6. Ensure that the **ntpd** daemon starts at boot time:

```
# chkconfig ntpd on
```

Use the **ntpdate** command for a one-time synchronization of NTP. For more information about this feature, see the *Red Hat Enterprise Linux Deployment Guide*.

1.3. Hardware Compatibility

Hardware specifications change almost daily, it is recommended that all systems be checked for compatibility. The most recent list of supported hardware can be found in the *Red Hat Gluster Storage Server Compatible Physical, Virtual Server and Client OS Platforms List*, available online at <https://access.redhat.com/knowledge/articles/66206>. You must ensure that your environments meets the hardware compatibility outlined in this article. Hardware specifications change rapidly and full compatibility is not guaranteed.

Hardware compatibility is a particularly important concern if you have an older or custom-built system.

1.4. Port Information

Red Hat Gluster Storage Server uses the listed ports. Ensure that firewall settings do not prevent access to these ports.

Table 1.1. TCP Port Numbers

Port Number	Usage
22	For sshd used by geo-replication.
111	For rpc port mapper.
139	For netbios service.
445	For CIFS protocol.
965	For NFS's Lock Manager (NLM).
2049	For glusterFS's NFS exports (nfsd process).
24007	For glusterd (for management).
24009 - 24108	For client communication with Red Hat Gluster Storage 2.0.
38465	For NFS mount protocol.
38466	For NFS mount protocol.
38468	For NFS's Lock Manager (NLM).
38469	For NFS's ACL support.
39543	For oVirt (Red Hat Gluster Storage-Console).
49152 - 49251	For client communication with Red Hat Gluster Storage 2.1 and for brick processes depending on the availability of the ports. The total number of ports required to be open depends on the total number of bricks exported on the machine.
54321	For VDSM (Red Hat Gluster Storage Console).
55863	For oVirt (Red Hat Gluster Storage-Console).

Table 1.2. TCP Port Numbers used for Object Storage (Swift)

Port Number	Usage
443	For HTTPS request.
6010	For Object Server.
6011	For Container Server.
6012	For Account Server.
8080	For Proxy Server.

Table 1.3. TCP Port Numbers for Nagios Monitoring

Port Number	Usage
80	For HTTP protocol (required only if Nagios server is running on a Red Hat Gluster Storage node).
443	For HTTPS protocol (required only for Nagios server).
5667	For NSCA service (required only if Nagios server is running on a Red Hat Gluster Storage node).
5666	For NRPE service (required in all Red Hat Gluster Storage nodes).

Table 1.4. UDP Port Numbers

Port Number	Usage
111	For RPC Bind.
963	For NFS's Lock Manager (NLM).

1.5. Supported Versions of Red Hat Gluster Storage

Several versions of Red Hat Gluster Storage (RHGS) are currently supported. In order to upgrade or use Red Hat Gluster Storage in conjunction with other software, you may need to know the support details of each version. This table provides a summary.

Table 1.5. Version Details

RHGS version	glusterfs and glusterfs-fuse	RHGS op-version	Samba	NFS
3.0	3.6.0.28-1	30000	SMB 1, 2.0	NFSv3
3.0 Update 1	3.6.0.29-1	30000	SMB 1, 2.0	NFSv3
3.0 Update 2	3.6.0.29-3	30000	SMB 1, 2.0	NFSv3
3.0 Update 3	3.6.0.42-1	30000	SMB 1, 2.0	NFSv3
3.0 Update 4	3.6.0.53-1	30004	SMB 1, 2.0, 2.1, 3.0	NFSv3, NFSv4
3.1	3.7.1-11	30703	SMB 1, 2.0, 2.1, 3.0	NFSv3, NFSv4
3.1 Update 1	3.7.1-16	30703	SMB 1, 2.0, 2.1, 3.0	NFSv3, NFSv4
3.1 Update 2	3.7.5-19	30707	SMB 1, 2.0, 2.1, 3.0	NFSv3, NFSv4

Also, note that the repository that you install packages from may affect the package version installed. This in turn may affect the compatibility of your systems. In general, Red Hat recommends installing the client from the Red Hat Gluster Storage repository (**rhe1-x86_64-server-rhsc1ient-6**).

Chapter 2. Installing Red Hat Gluster Storage

Red Hat Gluster Storage can be installed in a data center using Red Hat Gluster Storage Server On-Premise.

This chapter describes the three different methods for installing Red Hat Gluster Storage Server: using an ISO image, using a PXE server, or using the Red Hat Satellite Server.

For information on launching Red Hat Gluster Storage Server for Public Cloud, see the Red Hat Gluster Storage Administration Guide.



Important

- ❖ Technology preview packages will also be installed with this installation of Red Hat Gluster Storage Server. For more information about the list of technology preview features, see *Chapter 4. Technology Previews* in the *Red Hat Gluster Storage 3.1 Release Notes*.
- ❖ While cloning a Red Hat Gluster Storage Server installed on a virtual machine, the `/var/lib/glusterd/glusterd.info` file will be cloned to the other virtual machines, hence causing all the cloned virtual machines to have the same UUID. Ensure to remove the `/var/lib/glusterd/glusterd.info` file before the virtual machine is cloned. The file will be automatically created with a UUID on initial start-up of the glusterd daemon on the cloned virtual machines.

2.1. Obtaining Red Hat Gluster Storage

This chapter details the steps to obtain the Red Hat Gluster Storage software.

2.1.1. Obtaining Red Hat Gluster Storage Server for On-Premise

Visit the **Software & Download Center** in the Red Hat Customer Service Portal (<https://access.redhat.com/downloads>) to obtain the Red Hat Gluster Storage Server for On-Premise installation *ISO image files*. Use a valid Red Hat Subscription to download the full installation files, obtain a free evaluation installation, or follow the links in this page to purchase a new Red Hat Subscription.

To download the Red Hat Gluster Storage Server installation files using a Red Hat Subscription or a Red Hat Evaluation Subscription:

1. Visit the Red Hat Customer Service Portal at <https://access.redhat.com/login> and enter your user name and password to log in.
2. Click **Downloads** to visit the **Software & Download Center**.
3. In the Red Hat Gluster Storage Server area, click **Download Software** to download the latest version of the software.

2.1.2. Obtaining Red Hat Gluster Storage Server for Public Cloud

Red Hat Gluster Storage Server for Public Cloud is pre-integrated, pre-verified, and ready to run the Amazon Machine Image (AMI). This AMI provides a fully POSIX-compatible, highly available, scale-out NAS and object storage solution for the Amazon Web Services (AWS) public cloud infrastructure.

For more information about obtaining access to AMI, see <https://access.redhat.com/knowledge/articles/145693>.

2.2. Installing from an ISO Image

2.2.1. Installing Red Hat Gluster Storage 3.1 on Red Hat Enterprise Linux 6.7

To install Red Hat Gluster Storage Server from the ISO image:

1. Download an ISO image file for Red Hat Gluster Storage Server as described in [Section 2.1, “Obtaining Red Hat Gluster Storage”](#)

The installation process launches automatically when you boot the system using the ISO image file.

Press **Enter** to begin the installation process.



Note

For some hypervisors, while installing Red Hat Gluster Storage on a virtual machine, you must select the **Install System with basic video driver** option.

2. The **Configure TCP/IP** screen displays.

To configure your computer to support TCP/IP, accept the default values for Internet Protocol Version 4 (IPv4) and Internet Protocol Version 6 (IPv6) and click **OK**. Alternatively, you can manually configure network settings for both Internet Protocol Version 4 (IPv4) and Internet Protocol Version 6 (IPv6).



Important

NLM Locking protocol implementation in Red Hat Gluster Storage does not support clients over IPv6.

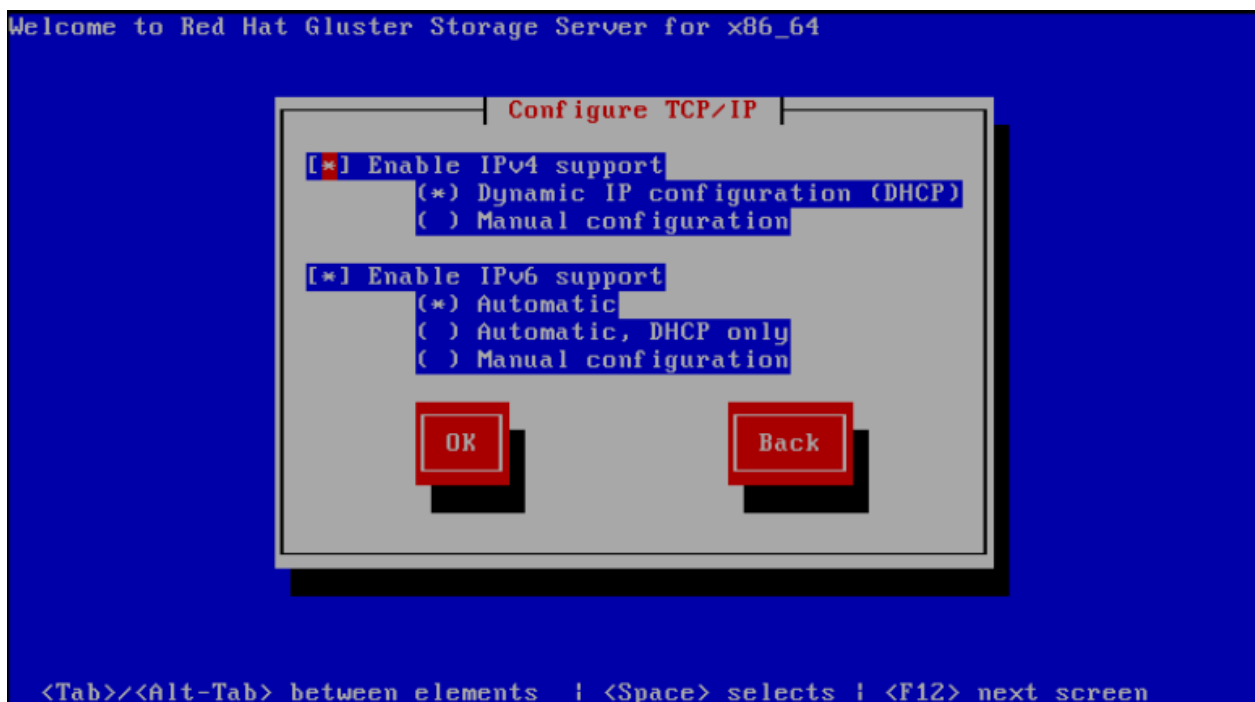


Figure 2.1. Configure TCP/IP

3. The **Welcome** screen displays.

Click **Next**.

4. The **Language Selection** screen displays. Select the preferred language for the installation and the system default and click **Next**.

5. The **Keyboard Configuration** screen displays. Select the preferred keyboard layout for the installation and the system default and click **Next**.

6. The **Storage Devices** screen displays. Select **Basic Storage Devices**.

Click **Next**.

7. The **Hostname** configuration screen displays.

Enter the hostname for the computer. You can also configure network interfaces if required. Click **Next**.

8. The **Time Zone Configuration** screen displays. Set your time zone by selecting the city closest to your computer's physical location.

9. The **Set Root Password** screen displays.

The root account's credentials will be used to install packages, upgrade RPMs, and perform most system maintenance. As such, setting up a root account and password is one of the most important steps in the installation process.



Note

The root user (also known as the superuser) has complete access to the entire system. For this reason, you should only log in as the root user to perform system maintenance or administration.

The **Set Root Password** screen prompts you to set a root password for your system. You cannot proceed to the next stage of the installation process without entering a root password.

Enter the root password into the **Root Password** field. The characters you enter will be masked for security reasons. Then, type the same password into the **Confirm** field to ensure the password is set correctly. After you set the root password, click **Next**.

10. The **Partitioning Type** screen displays.

Partitioning allows you to divide your hard drive into isolated sections that each behave as their own hard drive. Partitioning is particularly useful if you run multiple operating systems. If you are unsure how to partition your system, see *An Introduction to Disk Partitions in Red Hat Enterprise Linux 6 Installation Guide* for more information.

In this screen you can choose to create the default partition layout in one of four different ways, or choose to partition storage devices manually to create a custom layout.

If you are not comfortable partitioning your system, choose one of the first four options. These options allow you to perform an automated installation without having to partition your storage devices yourself. Depending on the option you choose, you can still control what data, if any, is removed from the system. Your options are:

- ✦ Use All Space
- ✦ Replace Existing Linux System(s)
- ✦ Shrink Current System
- ✦ Use Free Space
- ✦ Create Custom Layout

Choose the preferred partitioning method by clicking the radio button to the left of its description in the dialog box.

Click **Next** once you have made your selection. For more information on disk partitioning, see *Disk Partitioning Setup* in the *Red Hat Enterprise Linux 6 Installation Guide*.



Important

- ✦ It is recommended to create a separate **/var** partition that is large enough (50GB - 100GB) for log files, geo-replication related miscellaneous files, and other files.
- ✦ If a user does not select **Create Custom Layout**, all the connected/detected disks will be used in the Volume Group for the **/** and **/home** filesystems.

11. The **Boot Loader** screen displays with the default settings.

Click **Next**.

12. The **Minimal Selection** screen displays.

Click **Next** to retain the default selections and proceed with the installation.

- ✦ To customize your package set further, select the **Customize now** option and click **Next**. This will take you to the **Customizing the Software Selection** screen.

Click **Next** to retain the default selections and proceed with the installation.

- ✦ For Red Hat Gluster Storage 3.0.4 or later, if you require the Samba packages, ensure you select the **RH-Gluster-Samba-Server** component, in the **Customizing the Software Selection** screen. If you require samba active directory integration with gluster, ensure you select **RH-Gluster-AD-Integration** component. For NFS-Ganesha select **RH-Gluster-NFS-Ganesha**.

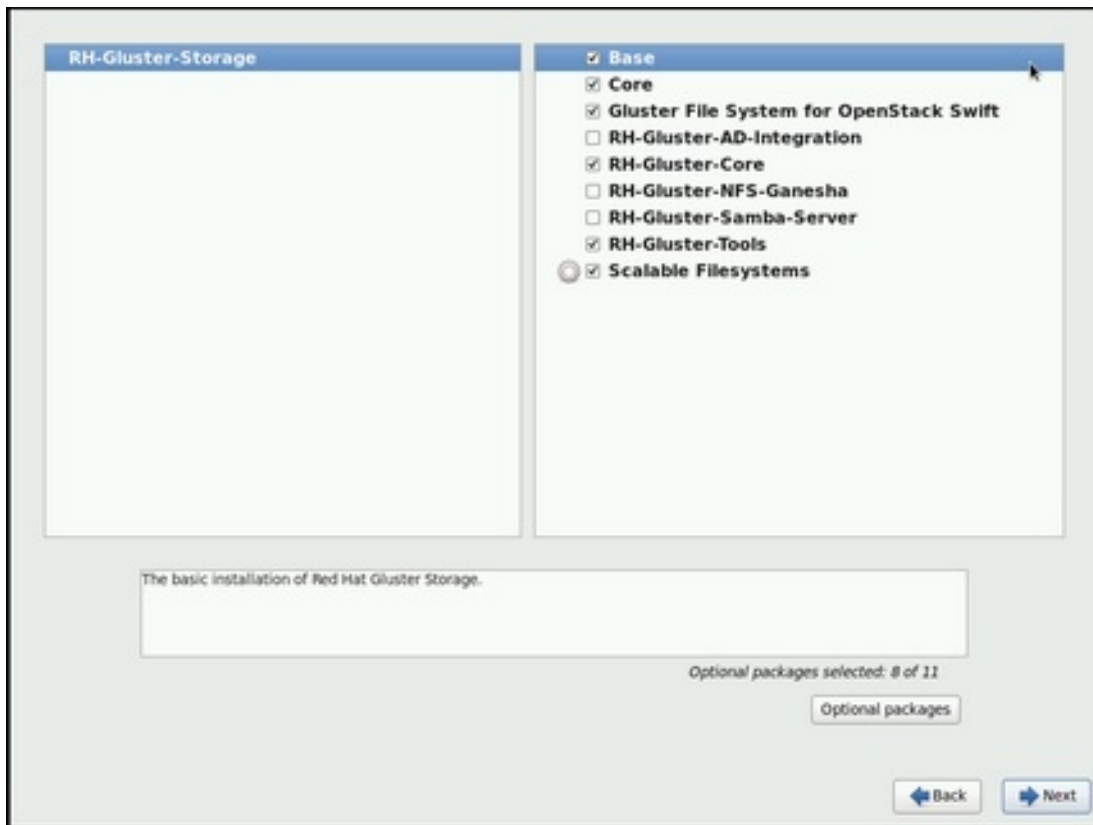


Figure 2.2. Customize Packages

13. The **Package Installation** screen displays.

Red Hat Gluster Storage Server reports the progress on the screen as it installs the selected packages in the system.

14. On successful completion, the **Installation Complete** screen displays.
15. Click **Reboot** to reboot the system and complete the installation of Red Hat Gluster Storage Server.

Ensure that you remove any installation media if it is not automatically ejected upon reboot.

Congratulations! Your Red Hat Gluster Storage Server installation is now complete.

For more information about installing Samba, see [Chapter 3, Deploying Samba on Red Hat Gluster Storage](#)

For more information about installing NFS-Ganesha, see [Chapter 4, Deploying NFS-Ganesha on Red Hat Gluster Storage](#).

2.2.2. Installing Red Hat Gluster Storage 3.1 on Red Hat Enterprise Linux 7.2

To install Red Hat Gluster Storage 3.1 on Red Hat Enterprise Linux 7.2:

1. Download an ISO image file for Red Hat Gluster Storage Server as described in [Section 2.1, "Obtaining Red Hat Gluster Storage"](#)
2. In the **Welcome to Red Hat Gluster Storage 3.1** screen, select the language that will be used for the rest of the installation and click **Continue**. This selection will also become the default for the installed system, unless changed later.



Note

One language is pre-selected by default on top of the list. If network access is configured at this point (for example, if you booted from a network server instead of local media), the pre-selected language will be determined based on automatic location detection using the GeolP module.

3. The **Installation Summary** screen is the central location for setting up an installation.



Figure 2.3. Installation Summary

Instead of directing you through consecutive screens, the Red Hat Gluster Storage 3.1 installation program on Red Hat Enterprise Linux 7.2 allows you to configure the installation in the order you choose.

Select a menu item to configure a section of the installation. When you have completed configuring a section, or if you would like to complete that section later, click the **Done** button located in the upper left corner of the screen.

Only sections marked with a warning symbol are mandatory. A note at the bottom of the screen warns you that these sections must be completed before the installation can begin. The remaining sections are optional. Beneath each section's title, the current configuration is summarized. Using this you can determine whether you need to visit the section to configure it further.

The following list provides a brief information of each of the menu item on the **Installation Summary** screen:

✧ **Date & Time**

To configure time zone, date, and optional settings for network time, select **Date & Time**.

✧ **Language Support**

To install support for additional locales and language dialects, select **Language Support**.

✧ **Keyboard Configuration**

To add multiple keyboard layouts to your system, select **Keyboard**.

✧ **Installation Source**

To specify a file or a location to install Red Hat Enterprise Linux from, select **Installation Source**. On this screen, you can choose between locally available installation media, such as a DVD or an ISO file, or a network location.

✧ **Network & Hostname**

To configure essential networking features for your system, select **Network & Hostname**.



Important

When the Red Hat Gluster Storage 3.1 on Red Hat Enterprise Linux 7.2 installation finishes and the system boots for the first time, any network interfaces which you configured during the installation will be activated. However, the installation does not prompt you to configure network interfaces on some common installation paths - for example, when you install Red Hat Gluster Storage 3.1 on Red Hat Enterprise Linux 7.2 from a DVD to a local hard drive.

When you install Red Hat Gluster Storage 3.1 on Red Hat Enterprise Linux 7.2 from a local installation source to a local storage device, be sure to configure at least one network interface manually if you require network access when the system boots for the first time. You will also need to set the connection to connect automatically after boot when editing the configuration.

✧ **Software Selection**

To specify which packages will be installed, select **Software Selection**. If you require the following optional Add-Ons, then select the required Add-Ons and click **Done**:

- RH-Gluster-AD-Integration
- RH-Gluster-NFS-Ganesha
- RH-Gluster-Samba-Server

✧ **Installation Destination**

To select the disks and partition the storage space on which you will install Red Hat Gluster Storage, select **Installation Destination**. For more information on Installation Destination, see *Section 6.13* in the *Red Hat Enterprise Linux 7 Installation Guide*.

✦ **Kdump**

Kdump is a kernel crash dumping mechanism which, in the event of a system crash, captures information that can be invaluable in determining the cause of the crash. Use this option to select whether or not to use Kdump on the system

4. After making the necessary configurations, click **Begin Installation** on the **Installation Summary** screen.



Warning

Up to this point in the installation process, no lasting changes have been made on your computer. When you click **Begin Installation**, the installation program will allocate space on your hard drive and start to transfer Red Hat Gluster Storage into this space. Depending on the partitioning option that you chose, this process might include erasing data that already exists on your computer.

To revise any of the choices that you made up to this point, return to the relevant section of the **Installation Summary** screen. To cancel installation completely, click **Quit** or switch off your computer.

If you have finished customizing the installation and are certain that you want to proceed, click **Begin Installation**.

After you click **Begin Installation**, allow the installation process to complete. If the process is interrupted, for example, by you switching off or resetting the computer, or by a power outage, you will probably not be able to use your computer until you restart and complete the Red Hat Gluster Storage installation process

5. Once you click **Begin Installation**, the progress screen appears. Red Hat Gluster Storage reports the installation progress on the screen as it writes the selected packages to your system. Following is a brief description of the options on this screen:

✦ **Root Password**

The Root Password menu item is used to set the password for the root account. The root account is used to perform critical system management and administration tasks. The password can be configured either while the packages are being installed or afterwards, but you will not be able to complete the installation process until it has been configured.

✦ **User Creation**

Creating a user account is optional and can be done after installation, but it is recommended to do it on this screen. A user account is used for normal work and to access the system. Best practice suggests that you always access the system via a user account and not the root account.

6. After the installation is completed, click **Reboot** to reboot your system and begin using Red Hat Gluster Storage.

2.3. Installing Red Hat Gluster Storage Server on Red Hat Enterprise Linux (Layered Install)

Layered install involves installing Red Hat Gluster Storage over Red Hat Enterprise Linux



Important

- Layered Installation is not available to all customers. Contact your Red Hat representative for more details on whether you can use it.
- It is recommended to create a separate `/var` partition that is large enough (50GB - 100GB) for log files, geo-replication related miscellaneous files, and other files.

1. Perform a base install of Red Hat Enterprise Linux Server

Red Hat Gluster Storage requires a kernel version of 2.6.32-431.17.1 or higher. This is available in Red Hat Enterprise Linux 6.5 and higher, and in Red Hat Enterprise Linux 7.

2. Register the System with Subscription Manager

Run the following command and enter your Red Hat Network user name and password to register the system with the Red Hat Network:

```
# subscription-manager register
```

3. Identify Available Entitlement Pools

Run the following commands to find entitlement pools containing the repositories required to install Red Hat Gluster Storage:

```
# subscription-manager list --available | grep -A8 "Red Hat Enterprise Linux Server"
# subscription-manager list --available | grep -A8 "Red Hat Storage"
```

4. Attach Entitlement Pools to the System

Use the pool identifiers located in the previous step to attach the **Red Hat Enterprise Linux Server** and **Red Hat Gluster Storage** entitlements to the system. Run the following command to attach the entitlements:

```
# subscription-manager attach --pool=[POOLID]
```

For example:

```
# subscription-manager attach --pool=8a85f9814999f69101499c05aa706e47
```

5. Disable all Existing Repositories

Execute the following command to disable any existing repositories:

```
# subscription-manager repos --disable "*" 
```

6. Enable the Required Channels

For Red Hat Gluster Storage 3.1 on Red Hat Enterprise Linux 6.7

- a. Run the following commands to enable the repositories required to install Red Hat Gluster Storage:

```
# subscription-manager repos --enable=rhel-6-server-rpms
# subscription-manager repos --enable=rhel-scalefs-for-rhel-6-server-rpms
# subscription-manager repos --enable=rhs-3-for-rhel-6-server-rpms
```

- b. For Red Hat Gluster Storage 3.0.4 and later, if you require Samba, then enable the following repository:

```
# subscription-manager repos --enable=rh-gluster-3-samba-for-rhel-6-server-rpms
```

For more information about installing Samba, see [Chapter 3, Deploying Samba on Red Hat Gluster Storage](#)

- c. If you require NFS-Ganesha then enable the following repository:

```
# subscription-manager repos --enable=rh-gluster-3-nfs-for-rhel-6-server-rpms
```

For more information about installing NFS-Ganesha, see [Chapter 4, Deploying NFS-Ganesha on Red Hat Gluster Storage](#).

For Red Hat Gluster Storage 3.1 on Red Hat Enterprise Linux 7.x

- a. Run the following commands to enable the repositories required to install Red Hat Gluster Storage

```
# subscription-manager repos --enable=rhel-7-server-rpms
# subscription-manager repos --enable=rh-gluster-3-for-rhel-7-server-rpms
```

- b. For Red Hat Gluster Storage 3.0.4 and later, if you require Samba, then enable the following repository:

```
# subscription-manager repos --enable=rh-gluster-3-samba-for-rhel-7-server-rpms
```

For more information about installing Samba, see [Chapter 3, Deploying Samba on Red Hat Gluster Storage](#)

- c. If you require NFS-Ganesha then enable the following repository:

```
# subscription-manager repos --enable=rh-gluster-3-nfs-for-rhel-7-server-rpms
```

For more information about installing NFS-Ganesha, see [Chapter 4, Deploying NFS-Ganesha on Red Hat Gluster Storage](#).

7. Verify if the Channels are Enabled

Run the following command to verify if the channels are enabled:

```
# yum repolist
```

8. Install Red Hat Gluster Storage

Run the following command to install Red Hat Gluster Storage:

```
# yum install redhat-storage-server
```

- a. For Red Hat Gluster Storage 3.0.4 and later, if you require Samba, then execute the following command to install Samba:

```
# yum groupinstall RH-Gluster-Samba-Server
```

- b. If you require Samba Active Directory integration with gluster, execute the following command:

```
# yum groupinstall RH-Gluster-AD-Integration
```

- c. To install NFS-Ganesha, see [Chapter 4, Deploying NFS-Ganesha on Red Hat Gluster Storage](#)

9. Reboot

Reboot the system.

2.4. Installing from a PXE Server

To boot your computer using a PXE server, you need a properly configured server and a network interface in your computer that supports PXE.

Configure the computer to boot from the network interface. This option is in the BIOS, and may be labeled **Network Boot** or **Boot Services**. Once you properly configure PXE booting, the computer can boot the Red Hat Gluster Storage Server installation system without any other media.

To boot a computer from a PXE server:

1. Ensure that the network cable is attached. The link indicator light on the network socket should be lit, even if the computer is not switched on.
2. Switch on the computer.
3. A menu screen appears. Press the number key that corresponds to the preferred option.

If your computer does not boot from the netboot server, ensure that the BIOS is configured so that the computer boots first from the correct network interface. Some BIOS systems specify the network interface as a possible boot device, but do not support the PXE standard. See your hardware documentation for more information.

2.5. Installing from Red Hat Satellite Server

Ensure that the firewall settings are configured so that the required ports are open. For a list of port numbers, see [Section 1.4, "Port Information"](#).

Creating the Activation Key

For more information on how to create an activation key, see *Activation Keys* in the *Red Hat Network Satellite Reference Guide*.

- In the **Details** tab of the **Activation Keys** screen, select **Red Hat Enterprise Linux Server (v.6 for 64-bit x86_64)** from the **Base Channels** drop-down list.

The screenshot shows the 'RHS3_ActivationKey' configuration page in the Red Hat Satellite web interface. The 'Base Channels' dropdown is set to 'Red Hat Enterprise Linux Server (v. 6 for 64-bit x86_64)'. The 'Add-On Entitlements' section includes checkboxes for Monitoring, Provisioning, Virtualization, and Virtualization Platform. The 'Configuration File Deployment' section has a checkbox for 'Configuration File Deployment' which is currently disabled. The 'Universal Default' section has a checkbox for 'Universal Default' which is also currently disabled. The 'Update Activation Key' button is visible at the bottom right.

Figure 2.4. Base Channels

- In the **Child Channels** tab of the **Activation Keys** screen, select the following child channels:

RHEL Server Scalable File System (v. 6 for x86_64)
Red Hat Gluster Storage Server 3 (RHEL 6 for x86_64)

For Red Hat Gluster Storage 3.0.4 or later, if you require the Samba package, then select the following child channel:

Red Hat Gluster 3 Samba (RHEL 6 for x86_64)

The screenshot shows the 'RHS3_ActivationKey' configuration page in the Red Hat Satellite web interface, with the 'Child Channels' tab selected. A list of child channels is displayed, including 'Red Hat Enterprise Virt Management Agent (v.6 for x86_64)', 'Red Hat JBoss EAP (v.6) for 64-bit x86_64', 'Red Hat Storage 2.1 Console (x86_64)', 'Red Hat Storage 3 Nagios Server (RHEL 6 for x86_64)', 'Red Hat Storage Console 3 (x86_64)', 'Red Hat Storage Native Client (RHEL Server 6 for x86_64)', 'Red Hat Storage Server 3 (RHEL 6 for x86_64)', 'RHEL Server Scalable File System (v. 6 for x86_64)', and 'RHN Tools for RHEL (v. 6 for 64-bit x86_64)'. The 'RHEL Server Scalable File System (v. 6 for x86_64)' channel is highlighted. The 'Update Key' button is visible at the bottom right.

Figure 2.5. Child Channels

- In the **Packages** tab of the **Activation Keys** screen, enter the following package name:

redhat-storage-server

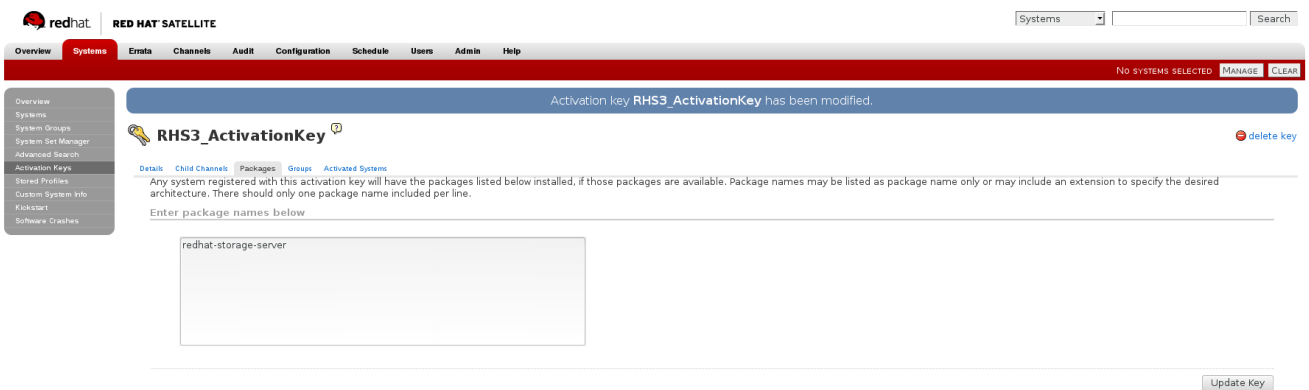


Figure 2.6. Package

- For Red Hat Gluster Storage 3.0.4 or later, if you require the Samba package, then enter the following package name:

samba

Creating the Kickstart Profile

For more information on creating a kickstart profile, see *Kickstart* in the *Red Hat Network Satellite Reference Guide*.

- When creating a kickstart profile, the following **Base Channel** and **Tree** must be selected.

Base Channel: Red Hat Enterprise Linux Server (v.6 for 64-bit x86_64)

Tree: ks-rhel-x86_64-server-6-6.5

- Do not associate any child channels with the kickstart profile.
- Associate the previously created activation key with the kickstart profile.



Important

- By default, the kickstart profile chooses **md5** as the hash algorithm for user passwords.

You must change this algorithm to **sha512** by providing the following settings in the **auth** field of the **Kickstart Details, Advanced Options** page of the kickstart profile:

```
--enableshadow --passalgo=sha512
```

- After creating the kickstart profile, you must change the root password in the **Kickstart Details, Advanced Options** page of the kickstart profile and add a root password based on the prepared sha512 hash algorithm.

Installing Red Hat Gluster Storage Server using the Kickstart Profile

For more information on installing Red Hat Gluster Storage Server using a kickstart profile, see *Kickstart* in *Red Hat Network Satellite Reference Guide*.

2.6. Subscribing to the Red Hat Gluster Storage Server Channels

After you have successfully installed Red Hat Gluster Storage, you must subscribe to the required channels:



Note

If you used Red Hat Satellite or Layered Installation method to install Red Hat Gluster Storage 3.0, then you can skip the steps mentioned in this chapter. For more information regarding layered installation, see [Section 2.3, “Installing Red Hat Gluster Storage Server on Red Hat Enterprise Linux \(Layered Install\)”](#).

Using Subscription Manager

1. Register the System with Subscription Manager

Run the following command and enter your Red Hat Network user name and password to register the system with Subscription Manager:

```
# subscription-manager register --auto-attach
```

2. Enable the Required Channels for Red Hat Gluster Storage on Red Hat Enterprise Linux

For Red Hat Gluster Storage 3.1 on Red Hat Enterprise Linux 6.7

- Run the following commands to enable the repositories required to install Red Hat Gluster Storage:

```
# subscription-manager repos --enable=rhel-6-server-rpms
# subscription-manager repos --enable=rhel-scalefs-for-rhel-6-server-rpms
```



```
# subscription-manager repos --enable=rhs-3-for-rhel-6-server-rpms
```

- b. For Red Hat Gluster Storage 3.0.4 or later, if you require Samba, then enable the following repository:

```
# subscription-manager repos --enable=rh-gluster-3-samba-for-rhel-6-server-rpms
```

- c. For Red Hat Gluster Storage 3.1, if NFS-Ganesha is required, then enable the following repository:

```
# subscription-manager repos --enable=rh-gluster-3-nfs-for-rhel-6-server-rpms
```

For Red Hat Gluster Storage 3.1 on Red Hat Enterprise Linux 7.2

- a. Run the following commands to enable the repositories required to install Red Hat Gluster Storage

```
# subscription-manager repos --enable=rhel-7-server-rpms
# subscription-manager repos --enable=rh-gluster-3-for-rhel-7-server-rpms
```

- b. For Red Hat Gluster Storage 3.0.4 or later, if you require Samba, then enable the following repository:

```
# subscription-manager repos --enable=rh-gluster-3-samba-for-rhel-7-server-rpms
```

- c. For Red Hat Gluster Storage 3.1, if NFS-Ganesha is required, then enable the following repository:

```
# subscription-manager repos --enable=rh-gluster-3-nfs-for-rhel-7-server-rpms
```

- d. For Red Hat Gluster Storage 3.1, if you require CTDB, then enable the following repository:

```
# subscription-manager repos --enable=rh-gluster-3-samba-for-rhel-7-server-rpms
```

3. Verify if the Channels are Enabled

Run the following command to verify if the channels are enabled:

```
# yum repolist
```

Using Red Hat Satellite Server

1. Configure the Client System to Access Red Hat Satellite

Configure the client system to access Red Hat Satellite. Refer section *Registering Clients with Red Hat Satellite Server* in *Red Hat Satellite 5.6 Client Configuration Guide*.

2. Register to the Red Hat Satellite Server

Run the following command to register the system to the Red Hat Satellite Server:

```
# rhn_register
```

3. Register to the Standard Base Channel

In the select operating system release page, select **All available updates** and follow the prompts to register the system to the standard base channel for RHEL6 - rhel-x86_64-server-6. The standard base channel for RHEL 7 is RHEL7-rhel-x86_64-server-7

4. Subscribe to the Required Red Hat Gluster Storage Server Channels

For Red Hat Gluster Storage 3.1 on Red Hat Enterprise Linux 6.7

- a. Run the following command to subscribe the system to the required Red Hat Gluster Storage server channel:

```
# rhn-channel --add --channel rhel-x86_64-server-6-rhs-3 --  
channel rhel-x86_64-server-sfs-6
```

- b. For Red Hat Gluster Storage 3.0.4 or later, if you require Samba, then execute the following command to enable the required channel:

```
# rhn-channel --add --channel rhel-x86_64-server-6-rh-gluster-3-  
samba
```

- c. For Red Hat Gluster Storage 3.1, for NFS-Ganesha enable the following channel:

```
# rhn-channel --add --channel  
rhel-x86_64-server-6-rh-gluster-3-nfs
```

For Red Hat Gluster Storage 3.1 on Red Hat Enterprise Linux 7.2

- a. Run the following command to subscribe the system to the required Red Hat Gluster Storage server channels for RHEL 7:

```
# rhn-channel --add --channel rhel-x86_64-server-7-rh-gluster-3
```

- b. For Red Hat Gluster Storage 3.0.4 or later, if you require Samba, then execute the following command to enable the required channel:

```
# rhn-channel --add --channel rhel-x86_64-server-7-rh-gluster-3-  
samba
```

- c. For Red Hat Gluster Storage 3.1, for NFS-Ganesha enable the following channel:

```
# rhn-channel --add --channel  
rhel-x86_64-server-7-rh-gluster-3-nfs
```

- d. For Red Hat Gluster Storage 3.1, if CTDB is required, then enable the following channel:

```
# rhn-channel --add --channel rhel-x86_64-server-7-rh-gluster-3-samba
```

5. Verify if the System is Registered Successfully

Run the following command to verify if the system is registered successfully:

```
# rhn-channel --list
rhel-x86_64-server-7
rhel-x86_64-server-7-rh-gluster-3
```

2.7. Managing the glusterd Service

After installing Red Hat Gluster Storage, the **glusterd** service automatically starts on all the servers in the trusted storage pool. The service can be manually started and stopped using the **glusterd** service commands.

Use Red Hat Gluster Storage to dynamically change the configuration of glusterFS volumes without restarting servers or remounting volumes on clients. The glusterFS daemon **glusterd** also offers elastic volume management.

Use the **gluster** CLI commands to decouple logical storage volumes from physical hardware. This allows the user to grow, shrink, and migrate storage volumes without any application downtime. As storage is added to the cluster, the volumes are distributed across the cluster. This distribution ensures that the cluster is always available despite changes to the underlying hardware.

2.7.1. Manually Starting and Stopping glusterd

Use the following instructions to manually start and stop the **glusterd** service.

- Manually start **glusterd** as follows:

```
# /etc/init.d/glusterd start
```

or

```
# service glusterd start
```

- Manually stop **glusterd** as follows:

```
# /etc/init.d/glusterd stop
```

or

```
# service glusterd stop
```

2.8. Installing Ansible to Support gdeploy



Note

Consult with your IT department to confirm your organization's supported download instructions for Ansible.

gdeploy depends on Ansible to execute the playbooks and modules. You must install Ansible 1.9 to use gdeploy.

Chapter 3. Deploying Samba on Red Hat Gluster Storage

Red Hat Gluster Storage provides a more recent version of Samba than the one shipped with Red Hat Enterprise Linux 6.6. This allows Red Hat Gluster Storage to take advantage of the latest features and enhancements. It includes a plug-in for directly accessing Red Hat Gluster Storage server.

3.1. Prerequisites

To install Samba on Red Hat Gluster Storage you require access to the installation media either through an ISO or a properly configured software repository. The Red Hat Gluster Storage server requirements are:

1. You must install Red Hat Gluster Storage Server 3.0.4 on the target server.



Warning

- ❖ For layered installation of Red Hat Gluster Storage, ensure to have only the default Red Hat Enterprise Linux server installation, without the Samba or CTDB packages installed from Red Hat Enterprise Linux.
- ❖ The Samba version 3 is being deprecated from Red Hat Gluster Storage 3.0 Update 4. Further updates will not be provided for samba-3.x. It is recommended that you upgrade to Samba-4.x, which is provided in a separate channel or repository, for all updates including the security updates.
- ❖ CTDB version 2.5 is not supported from Red Hat Gluster Storage 3.1 Update 2. To use CTDB in Red Hat Gluster Storage 3.1.2 and later, you must upgrade the system to CTDB 4.x, which is provided in the Samba channel of Red Hat Gluster Storage.
- ❖ Downgrade of Samba from Samba 4.x to Samba 3.x is not supported.
- ❖ Ensure that Samba is upgraded on all the nodes simultaneously, as running different versions of Samba in the same cluster will lead to data corruption.

2. Enable the channel where the Samba packages are available:

For Red Hat Gluster Storage 3.1 on Red Hat Enterprise Linux 6.x

- a. If you have registered your machine using Red Hat Subscription Manager, enable the repository by running the following command:

```
# subscription-manager repos --enable=rh-gluster-3-samba-for-rhel-6-server-rpms
```

- b. If you have registered your machine using Satellite server, enable the channel by running the following command:

```
# rhn-channel --add --channel rhel-x86_64-server-6-rh-gluster-3-samba
```

For Red Hat Gluster Storage 3.1 on Red Hat Enterprise Linux 7.x

- a. If you have registered your machine using Red Hat Subscription Manager, enable the repository by running the following command:

```
# subscription-manager repos --enable=rh-gluster-3-samba-for-rhel-7-server-rpms
```

- b. If you have registered your machine using Satellite server, enable the channel by running the following command:

```
# rhn-channel --add --channel rhel-x86_64-server-7-rh-gluster-3-samba
```

3.2. Installing Samba Using ISO

During the installation of Red Hat Gluster Storage, ensure you select the **RH-Gluster-Samba-Server** component, in the **Customizing the Software Selection** screen:

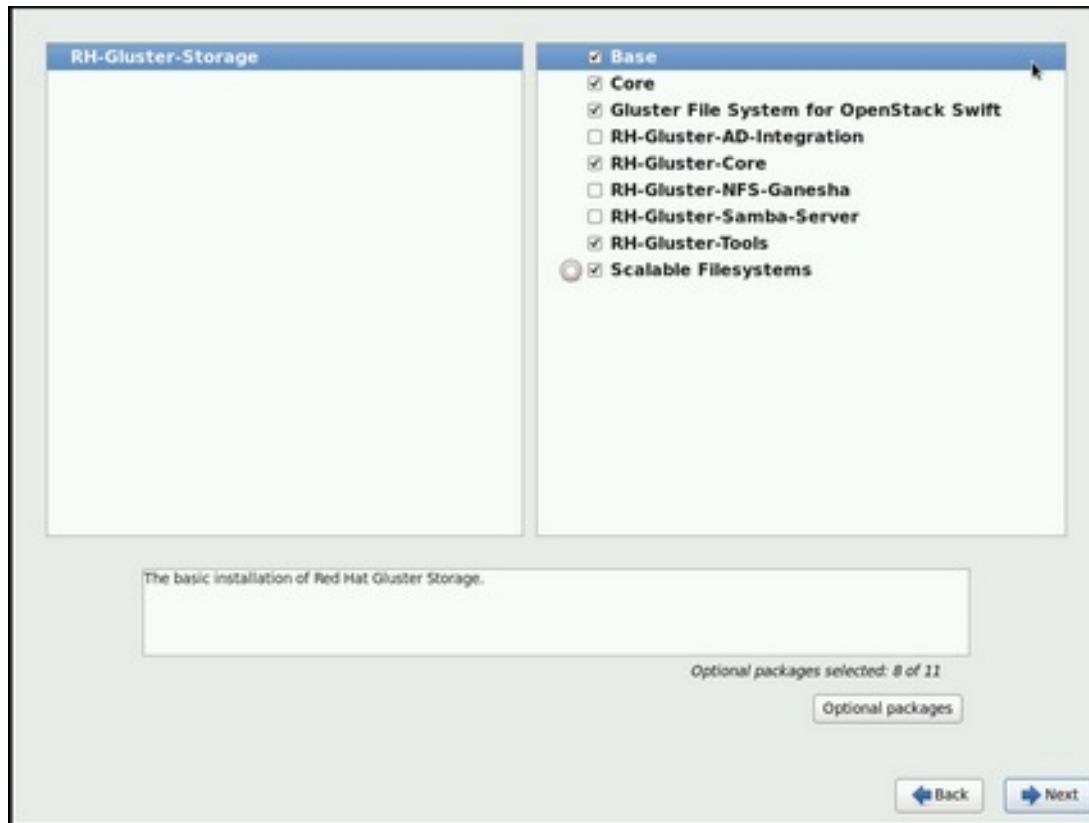


Figure 3.1. Customize Packages

For more information about installing Red Hat Gluster Storage using an ISO, see [Section 2.2, “Installing from an ISO Image”](#)

3.3. Installing Samba Using yum

To install Samba using yum, install the Samba group using the following command:

```
# yum groupinstall RH-Gluster-Samba-Server
```

If you require Samba Active Directory integration with gluster, execute the following command:

```
# yum groupinstall RH-Gluster-AD-Integration
```

For more information about installing Red Hat Gluster Storage using yum, see [Section 2.3, “Installing Red Hat Gluster Storage Server on Red Hat Enterprise Linux \(Layered Install\)”](#).

Samba can also be installed by following these steps:

1. To install the basic Samba packages, execute the following command:

```
# yum install samba
```

2. If you require the **smclient** on the server, then execute the following command:

```
# yum install samba-client
```

3. If you require an Active directory setup, then execute the following commands:

```
# yum install samba-winbind
# yum install samba-winbind-clients
# yum install samba-winbind-krb5-locator
```

4. Verify if the following packages are installed.

```
samba-libs
samba-winbind-krb5-locator
samba-winbind-modules
samba-vfs-glusterfs
samba-winbind
samba-client
samba-common
samba-winbind-clients
samba
```

Chapter 4. Deploying NFS-Ganesha on Red Hat Gluster Storage

NFS-Ganesha can be installed using any of the following methods:

- Installing NFS-Ganesha using yum
- Installing NFS-Ganesha during an ISO Installation

4.1. Prerequisites

To install NFS-Ganesha on Red Hat Gluster Storage you require access to the installation media either through an ISO or a properly configured software repository.

For Red Hat Gluster Storage 3.1 on Red Hat Enterprise Linux 6.x

Enable the channel where the NFS-Ganesha packages are available:

1. If you have registered your machine using Red Hat Subscription Manager, enable the repository by running the following command:

```
# subscription-manager repos
--enable=rh-gluster-3-nfs-for-rhel-6-server-rpms
```

2. If you have registered your machine using Satellite server, enable the channel by running the following command:

```
# rhn-channel --add --channel
rhel-x86_64-server-6-rh-gluster-3-nfs
```

3. To subscribe to the HA channel, execute the following command:

```
# rhn-channel --add --channel rhel-x86_64-server-ha-6
```

4. To add the HA repository, execute the following command:

```
# subscription-manager repos --enable=rhel-6-server-rpms --
enable=rhel-ha-for-rhel-6-server-rpms
```

For Red Hat Gluster Storage 3.1 on Red Hat Enterprise Linux 7.x

Enable the channel where the NFS-Ganesha packages are available:

1. If you have registered your machine using Red Hat Subscription Manager, enable the repository by running the following command:

```
# subscription-manager repos
--enable=rh-gluster-3-nfs-for-rhel-7-server-rpms
```

2. If you have registered your machine using Satellite server, enable the channel by running the following command:

```
# rhn-channel --add --channel
rhel-x86_64-server-7-rh-gluster-3-nfs
```


3. To subscribe to the HA channel, execute the following command:

```
# rhn-channel --add --channel rhel-x86_64-server-ha-7
```

4. To add the HA repository, execute the following command:

```
# subscription-manager repos --enable=rhel-7-server-rpms --  
enable=rhel-ha-for-rhel-7-server-rpms
```

4.2. Installing NFS-Ganesha during an ISO Installation

For more information about installing Red Hat Gluster Storage using an ISO image, see *Installing from an ISO Image*.

1. While installing Red Hat Storage using an ISO, in the Customizing the Software Selection screen, select **RH-Gluster-NFS-Ganesha** and click **Next**.
2. Proceed with the remaining installation steps for installing Red Hat Gluster Storage. For more information on how to install Red Hat Storage using an ISO, see *Installing from an ISO Image*.
3. For Red Hat Enterprise Linux 6.7, install Pacemaker by executing the following command:

```
# yum install pacemaker
```

4.3. Installing NFS-Ganesha using yum

For more information about installing Red Hat Gluster Storage using yum, see *Installing Red Hat Gluster Storage Server on Red Hat Enterprise Linux*.

Execute the following steps to install NFS-Ganesha:

1. **For Red Hat Enterprise Linux 7:** The glusterfs-ganesha package can be installed using the following command:

```
# yum install glusterfs-ganesha
```

NFS-Ganesha is installed along with the above package. nfs-ganesha-gluster and HA packages are also installed.

For Red Hat Enterprise Linux 6: Install Pacemaker and the glusterfs-ganesha package:

```
# yum install pacemaker
```

```
# yum install glusterfs-ganesha
```

Chapter 5. Deploying gstatus on Red Hat Gluster Storage

Gstatus can be installed using any of the following methods:

- Installing gstatus during an ISO Installation
- Installing using yum or the Red Hat Satellite Server or Red Hat Network

5.1. Installing gstatus during an ISO Installation

For more information about installing Red Hat Gluster Storage using an ISO image, see *Installing from an ISO Image*.

1. While installing Red Hat Storage using an ISO, in the **Customizing the Software Selection** screen, select **Red Hat Storage Tools Group** and click **Optional Packages**.
2. From the list of packages, select **gstatus** and click **Close**.
3. Proceed with the remaining installation steps for installing Red Hat Storage. For more information on how to install Red Hat Storage using an ISO, see *Installing from an ISO Image*.

5.2. Installing using yum or the Red Hat Satellite Server or Red Hat Network

The gstatus package can be installed using the following command:

```
# yum install gstatus
```



Note

If you are installing using the Red Hat Network or Satellite, ensure that your system is subscribed to the required channels.

To verify the installation execute the following command:

```
# yum list gstatus

Installed Packages
gstatus.x86_640.65-1@rhs-3-for-rhel-6-server-rpms
```

Chapter 6. Deploying Containerized Red Hat Gluster Storage with Atomic Host

With the Red Hat Gluster Storage 3.1 update 2 release, a Red Hat Gluster Storage environment can be set up in a container on a Red Hat Enterprise Linux Atomic Host 7.2.

This chapter provides step-by-step instructions for users to deploy containerized Red Hat Gluster Storage on a Atomic Host.

6.1. Supported Deployment Configuration

You must install one Red Hat Gluster Storage Container per Atomic Host and configure four bricks per Atomic Host.

6.2. Supported Versions

The following table lists the supported versions of Docker and Atomic Host with Red Hat Gluster Storage Server.

Table 6.1. Supported Versions

Red Hat Gluster Storage Server	Docker	Red Hat Enterprise Linux Atomic Host
3.1.2	1.8	7.2

For information on installing and upgrading to Red Hat Enterprise Linux Atomic Host 7.2, see <https://access.redhat.com/documentation/en/red-hat-enterprise-linux-atomic-host/version-7/installation-and-configuration-guide/>.

6.3. Downloading the Red Hat Gluster Storage Image from the Red Hat Registry

A Docker registry provides a place to store and share docker containers that are saved as images that can be shared with other people. With the docker package available with Red Hat Enterprise Linux Atomic Host, you can pull images from the Red Hat Customer Portal. You see what images are available to pull from the Red Hat Customer Portal (using docker pull) by searching the Red Hat Container Images Search Page at <https://access.redhat.com/search/browse/container-images>.

1. You can verify the docker service is running with the following command:

```
# systemctl status docker
docker.service - Docker Application Container Engine
Loaded: loaded (/usr/lib/systemd/system/docker.service; enabled)
Active: active (running) since Fri 2016-01-22 12:03:34 CEST; 3h 19min ago
Docs: http://docs.docker.com
Main PID: 843 (docker)
CGroup: /system.slice/docker.service
        └─843 /usr/bin/docker -d --selinux-enabled
```

2. Download the Red Hat Gluster Storage Container images from the Red Hat Docker Registry using the following command:

```
# docker pull registry.access.redhat.com/rhgs3/rhgs-server-rhel7
```

3. Verify that you have a Red Hat Gluster Storage image on a Red Hat Enterprise Linux Atomic Host 7.2 by checking the contents of the `/etc/redhat-release` file. First, on the host system:

```
# cat /etc/redhat-release  
Red Hat Enterprise Linux Atomic Host 7.2
```

4. And next, you can check the Red Hat Gluster Storage Container Image, again from the host system (no need to log into the container image):

```
# docker run rhgs3/rhgs-server-rhel7 cat /etc/redhat-storage-release  
Red Hat Gluster Storage Server 3.1 Update 2 (Container)
```

This means that you have successfully downloaded a Red Hat Gluster Storage Image on a Red Hat Enterprise Linux 7.2 Atomic Host and you can use that image.

For information on configuring Containerized Red Hat Gluster Storage, see Red Hat Gluster Storage 3.1 Administration Guide at https://access.redhat.com/documentation/en-US/Red_Hat_Storage/3.1/html/Administration_Guide/index.html.

Chapter 7. Deploying the Hortonworks Data Platform 2.1 on Red Hat Gluster Storage



Warning

Support for Hortonworks Data Platform (HDP) on Red Hat Gluster Storage integrated using the Hadoop Plug-In is deprecated as of Red Hat Gluster Storage 3.1 Update 2, and is unlikely to be supported in the next major release. Red Hat discourages further use of this plug-in for deployments where Red Hat Gluster Storage is directly used for holding analytics data for running in-place analytics. However, Red Hat Gluster Storage can be used as a general purpose repository for holding analytics data and as a companion store where the bulk of the data is stored and then moved to Hadoop clusters for analysis when necessary.

Red Hat Gluster Storage provides compatibility for Apache Hadoop and it uses the standard file system APIs available in Hadoop to provide a new storage option for Hadoop deployments. Red Hat has created a Hadoop File System plug-in that enables Hadoop Distributions to run on Red Hat Gluster Storage.



Important

The following features of Red Hat Gluster Storage is not supported with Hadoop:

- ✦ Dispersed Volumes and Distributed Dispersed Volume
- ✦ Red Hat Enterprise Linux 7.x

7.1. Prerequisites

Before you begin installation, you must establish the basic infrastructure required to enable Hadoop to run on Red Hat Gluster Storage.

7.1.1. Supported Versions

The following table lists the supported versions of HDP and Ambari with Red Hat Gluster Storage Server.

Table 7.1. Red Hat Gluster Storage Server Support Matrix

Red Hat Gluster Storage Server version	HDP version	Ambari version
3.1	2.1	1.6.1

7.1.2. Software and Hardware Requirements

You must ensure that all the servers used in this environment meet the following requirements:

- ✦ Must have at least the following hardware specification:
 - 2 x 2 GHz 4 core processors
 - 32 GB RAM

- 500 GB of storage capacity
- 1 x 1 GbE NIC
- ✦ Must have iptables disabled.
- ✦ Must use fully qualified domain names (FQDN). For example rhs-1.server.com is acceptable, but rhs-1 is not allowed.
- ✦ SELinux must be in **disabled** mode.
- ✦ Time on all the servers must be uniform. It is recommended to set up a NTP (Network Time Protocol) service to keep the time synchronized.
- ✦ Either, all servers must be configured to use a DNS server and must be able to use DNS for FQDN resolution or all the storage nodes must have the FQDN of all of the servers in the cluster listed in their **/etc/hosts** file.
- ✦ Must have the following users and groups available on all the servers.

User	Group
yarn	hadoop
mapred	hadoop
hive	hadoop
hcat	hadoop
ambari-qa	hadoop
hbase	hadoop
tez	hadoop
zookeeper	hadoop
oozie	hadoop
falcon	hadoop

The specific UIDs and GIDs for the respective users and groups are up to the Administrator of the trusted storage pool, but they must be consistent across the trusted storage pool. For example, if the "hadoop" user has a UID as 591 on one server, the hadoop user must have UID as 591 on all other servers. This can be quite a lot of work to manage using Local Authentication and it is common and acceptable to install a central authentication solution such as LDAP or Active Directory for your cluster, so that users and groups can be easily managed in one place. However, to use local authentication, you can run the script below on each server to create the users and groups and ensure they are consistent across the cluster:

```
groupadd hadoop -g 590; useradd -u 591 mapred -g hadoop; useradd -u 592
yarn -g hadoop; useradd -u 594 hcat -g hadoop; useradd -u 595 hive -g
hadoop; useradd -u 590 ambari-qa -g hadoop; useradd -u 593 tez -g hadoop;
useradd -u 596 oozie -g hadoop; useradd -u 597 zookeeper -g hadoop;
useradd -u 598 falcon -g hadoop; useradd -u 599 hbase -g hadoop
```

7.1.3. Existing Red Hat Gluster Storage Trusted Storage Pool

If you have an existing Red Hat Gluster Storage trusted storage pool, you need to add two additional servers to run the Hortonworks Ambari Management Services and the YARN Master Services, respectively. For more information on recommended deployment topologies, see *Administering the Hortonworks Data Platform on Red Hat Gluster Storage* chapter in *Red Hat Gluster Storage Administration Guide*.

In addition, all nodes within the Red Hat Gluster Storage Trusted Storage Pool that contain volumes that are to be used with Hadoop must contain a local glusterfs-fuse mount of that volume. The path of the mount for each volume must be consistent across the cluster.

For information on expanding your trusted storage pool by adding servers, see section *Expanding Volumes* in the *Red Hat Gluster Storage 3.1 Administration Guide*.



Note

The supported volume configuration for Hadoop is Distributed Replicated volume with replica count of 2 or 3.

SELinux must be in **disabled** mode. The **rhs-hadoop-install** script does not recognize SELinux in permissive mode and requires SELinux to be disabled completely. This requires additional restart of all storage machines.



Important

New Red Hat Gluster Storage and Hadoop Clusters use the naming conventions of `/mnt/brick1` as the mount point for Red Hat Gluster Storage bricks and `/mnt/glusterfs/volname` as the mount point for Red Hat Gluster Storage volume. It is possible that you have an existing Red Hat Gluster Storage volume that has been created with different mount points for the Red Hat Gluster Storage bricks and volumes. If the mount points differ from the convention, replace the prefix listed in this installation guide with the prefix that you have.

Information on how to mount and configure bricks and volumes with required parameters and description of required local mount of gluster volume are available in [Section 7.2.5, “Enabling Existing Volumes for use with Hadoop”](#)

7.1.4. New Red Hat Gluster Storage Trusted Storage Pool

You must create a Red Hat Gluster Storage trusted storage pool with at least four bricks for two-way replication and with six bricks for three-way replication. The servers on which these bricks reside must have the Red Hat Gluster Storage installed on them. The number of bricks must be a multiple of the replica count for a distributed replicated volume.

For more information on installing Red Hat Gluster Storage see [Chapter 2, Installing Red Hat Gluster Storage](#) or for upgrading to Red Hat Gluster Storage 3.1, see [Chapter 9, Upgrading from Red Hat Gluster Storage 2.1.x to Red Hat Gluster Storage 3.1](#).

Red Hat recommends that you have an additional two servers set aside to run the Hortonworks Ambari Management Services and the YARN Master Services, respectively. Alternate deployment topologies are also possible, for more information on various supported deployment topologies, see *Administering the Hortonworks Data Platform on Red Hat Gluster Storage* chapter in *Red Hat Gluster Storage Administration Guide*.

For information on expanding your trusted storage pool by adding servers, see section *Expanding Volumes* in the *Red Hat Gluster Storage 3.1 Administration Guide*.



Note

The supported volume configuration for Hadoop is Distributed Replicated volume with replica count of 2 or 3.

7.1.5. Red Hat Gluster Storage Server Requirements

You must install Red Hat Gluster Storage Server on the server. While installing the server, you must ensure to specify a fully qualified domain name (FQDN). A hostname alone will not meet the requirements for the Hortonworks Data Platform Ambari deployment tool.

You must also enable the **rhs-big-data-3-for-rhel-6-server-rpms** channel on this server.

- ✦ If you have registered your machine using Red Hat Subscription Manager, enable the repository by running the following command:

```
# subscription-manager repos --enable=rhs-big-data-3-for-rhel-6-server-rpms
```

- ✦ If you have registered your machine using Satellite server, enable the channel by running the following command:

```
# rhn-channel --add --channel rhel-x86_64-server-6-rhs-bigdata-3
```

7.1.6. Hortonworks Ambari Server Requirements

You must install Red Hat Enterprise Linux 6.6 on the servers. You can also choose to install Red Hat Gluster Storage Console on this server as well, but this is optional. This allows all aspects of the Red Hat Gluster Storage trusted pool to be managed from a single server. While installing the server, you must ensure to specify a fully qualified domain name (FQDN). A hostname alone will not meet the requirements for the Horton Data Platform Ambari deployment tool. **It is mandatory to setup a passwordless-SSH connection from the Ambari Server to all other servers within the trusted storage pool.** Instructions for installing and configuring Hortonworks Ambari is provided in the further sections of this chapter.

If the Hortonworks Ambari server is installed on a different node than Red Hat Gluster Storage Server, you must also enable the **rhel-6-server-rh-common-rpms** channel on this server.

- ✦ If you have registered your machine using Red Hat Subscription Manager, enable the repository by running the following command:

```
# subscription-manager repos --enable=rhel-6-server-rh-common-rpms
```

- ✦ If you have registered your machine using Satellite server, enable the channel by running the following command:

```
# rhn-channel --add --channel rhel-x86_64-server-rh-common-6
```




Warning

Red Hat Gluster Storage Console enables Nagios Alerting for Red Hat Gluster Storage. The Nagios Client libraries are shipped with Red Hat Gluster Storage and are on each Red Hat Gluster Storage Server. This causes a conflict with the Nagios System that is bundled with the Hortonworks Data Platform (HDP). Hence, using Ambari to deploy and manage HDP Nagios is not supported.



Note

If you are using one of the condensed deployment topologies listed in the *Administration Guide* and you have elected to place the Ambari Management server on the same node as a Red Hat Gluster Storage Server, you must only enable the **rhs-big-data-3-for-rhel-6-server-rpms** channel on that server.

- ✦ If you have registered your machine using Red Hat Subscription Manager, enable the repository by running the following command:

```
# subscription-manager repos --enable=rhs-big-data-3-for-rhel-6-server-rpms
```

- ✦ If you have registered your machine using Satellite server, enable the channel by running the following command:

```
# rhn-channel --add --channel rhel-x86_64-server-6-rhs-bigdata-3
```

7.1.7. YARN Master Server Requirements

You must install the Red Hat Enterprise Linux 6.6 on this server. While installing the server, you must ensure to specify a fully qualified domain name (FQDN). A hostname alone will not meet the requirements for the Horton Data Platform Ambari deployment tool.

If the YARN Master server is installed on a different node than Red Hat Gluster Storage Server, you must also enable the **rhel-6-server-rh-common-rpms** and **rhel-6-server-rhs-client-1-rpms** channels on the YARN server.

- ✦ If you have registered your machine using Red Hat Subscription Manager, enable the repositories by running the following command:

```
# subscription-manager repos --enable=rhel-6-server-rh-common-rpms --enable=rhel-6-server-rhs-client-1-rpms
```

- ✦ If you have registered your machine using Satellite server, enable the channel by running the following command:

```
# rhn-channel --add --channel rhel-x86_64-server-rh-common-6
# rhn-channel --add --channel rhel-x86_64-server-rhsclient-6
```



Note

If you are using one of the condensed deployment topologies listed in the *Administration Guide* and you have elected to place the YARN Master server on the same node as a Red Hat Gluster Storage Server, you must only enable the **rhs-big-data-3-for-rhel-6-server-rpms** channel on that server.

- ✦ If you have registered your machine using Red Hat Subscription Manager, enable the repository by running the following command:

```
# subscription-manager repos --enable=rhs-big-data-3-for-rhel-6-server-rpms
```

- ✦ If you have registered your machine using Satellite server, enable the channel by running the following command:

```
# rhn-channel --add --channel rhel-x86_64-server-6-rhs-bigdata-3
```

7.2. Installing the Hadoop FileSystem Plugin for Red Hat Gluster Storage

7.2.1. Adding the Hadoop Installer for Red Hat Gluster Storage

You must have the big-data channel added and the hadoop components installed on all the servers to use the Hadoop feature on Red Hat Gluster Storage. Run the following command on the Ambari Management Server, the YARN Master Server and all the servers within the Red Hat Gluster Storage trusted storage pool:

```
# yum install rhs-hadoop rhs-hadoop-install
```

7.2.2. Configuring the Trusted Storage Pool for use with Hadoop

Red Hat Gluster Storage provides a series of utility scripts that allows you to quickly prepare Red Hat Gluster Storage for use with Hadoop, and install the Ambari Management Server. You must first run the Hadoop cluster configuration initial script to install the Ambari Management Server, prepare the YARN Master Server to host the Resource Manager and Job History Server services for Red Hat Gluster Storage and build a trusted storage pool if it does not exist.



Note

You must run the script given below irrespective of whether you have an existing Red Hat Gluster Storage trusted storage pool or not.

To run the Hadoop configuration initial script:

1. Open the terminal window of the server designated to be the Ambari Management Server and navigate to the **/usr/share/rhs-hadoop-install/** directory.
2. Run the hadoop cluster configuration script as given below:

```
setup_cluster.sh [-y] [--quiet | --verbose | --debug] [--force-
ambari-update] [--hadoop-mgmt-node <node>] [--yarn-master <node>] [--
profile <profile>] [--ambari-repo <url>] <node-list-spec>
```

where <node-list-spec> is

```
<node1>:<brickmnt1>:<blkdev1> <node2>[:<brickmnt2>][:<blkdev2>]
[<node3>[:<brickmnt3>][:<blkdev3>]] ... [<nodeN>[:<brickmntN>][:
<blkdevN>]]
```

where

- ✳ **<brickmnt>** is the name of the XFS mount for the above **<blkdev>**, for example, **/mnt/brick1** or **/external/HadoopBrick**. When a Red Hat Gluster Storage volume is created its bricks has the volume name appended, so **<brickmnt>** is a prefix for the volume's bricks. Example: If a new volume is named **HadoopVol** then its brick list would be: **<node>:/mnt/brick1/HadoopVol** or **<node>:/external/HadoopBrick/HadoopVol**. Each brickmnt is mounted as follows with the following mount options: **noatime**, **inode64**.
- ✳ **<blkdev>** is the name of a Logical Volume device path, for example, **/dev/VG1/LV1** or **/dev/mapper/VG1-LV1**. Since LVM is a prerequisite for Red Hat Gluster Storage, the **<blkdev>** is not expected to be a raw block path, such as **/dev/sdb**.



Note

A minimum of two nodes, one brick mount, and one block device are required. A node can be repeated in <node-list>. For example, if host-1 has two different brick mounts and block devices then <node-list> could look like: **host-1:/mnt/brick1:/dev/vg1/lv1**, **host-2 host-1:/mnt/brick2:/dev/vg1/lv2**, and **host-2:/mnt/brick2:/dev/vg1/lv2**.

- ✳ **-y** causes all prompts to be auto-answered a **yes**. The default is that the user must respond to each prompt.
- ✳ **--quiet** is the default and produces the least output from the script.
- ✳ **--verbose** outputs more information about the steps taken by the script.
- ✳ **--debug** is the greatest level of output and is same as seen in the **/var/log/rhs-hadoop-install.log** log file.



Note

The **/var/log/rhs-hadoop-install.log** log file contains the **--debug** level of detailed information regardless of the verbose level chosen when running the script.

- ✳ **--profile** is the server-global profile name to set via the **tuned-adm** command. For example, **--profile rhs-high-throughput**. If specified, profile is set on each storage node in the cluster and applies to all workloads on these storage nodes. Default is that no profile is set.

- ✦ **--ambari-repo** names the URL to be used when updating the ambari agents and/or ambari server. The default is to use the URL hard-coded in the `bin/gen_ambari_repo_url.sh` script.
- ✦ **--force-ambari-update** causes the ambari-agent and ambari-server to be re-installed and re-started on all nodes in the cluster, even if they are already running. The default is to install the ambari-agent on all nodes where it is not running, and to install the ambari-server if it too is not running. For a new cluster, the agents and ambari-server will be installed. When adding nodes to an existing cluster, the new nodes will have the ambari-agent installed and started, and the existing nodes, by default, will not have the agent nor ambari-server re-installed. For verifying an existing cluster, by default, the ambari-agent and ambari-server will **not** be re-installed. However, if **--force-ambari-update** is specified the ambari-agents and ambari-server will always be installed/re-installed.
- ✦ **--hadoop-mgmt-node** is the hostname of the ambari management server. Default is localhost.
- ✦ **--yarn-master** is the hostname of the YARN resource manager server. Default is localhost.

Given below is an example of running the `setup_cluster.sh` script on the Ambari Management server and four Red Hat Gluster Storage Nodes which have the same logical volume and mount point intended to be used as a Red Hat Gluster Storage brick.

```
./setup_cluster.sh --yarn-master yarn.hdp rhs-1.hdp:/mnt/brick1:/dev/rhs_vg1/rhs_lv1 rhs-2.hdp rhs-3.hdp rhs-4.hdp
```



Note

If a brick mount is omitted, the brick mount of the first node is used and if one block device is omitted, the block device of the first node is used.

7.2.3. Creating Volumes for use with Hadoop



Note

If an existing Red Hat Gluster Storage volume is used with Hadoop, skip this section and continue with the instruction in the next section.

Whether you have a new or existing Red Hat Gluster Storage trusted storage pool, to create a volume for use with Hadoop, the volume needs to be created in such a way as to support Hadoop workloads. The supported volume configuration for Hadoop is Distributed Replicated volume with replica count of 2 or 3. You must not name the Hadoop enabled Red Hat Gluster Storage volume as **hadoop** or **mapredlocal**.

Run the script given below to create new volumes that you intend to use with Hadoop. The script provides the necessary configuration parameters to the volume as well as updates the Hadoop Configuration to make the volume accessible to Hadoop.

1. Open the terminal window of the server designated to be the Ambari Management Server and navigate to the `/usr/share/rhs-hadoop-install/` directory.
2. Run the hadoop cluster configuration script as given below:

```
create_vol.sh [-y][--quiet | --verbose | --debug] VOLNAME [--replica
count] <volMountPrefix> <node-list>
```

where

- ✦ **-y** causes all prompts to be auto-answered "yes". The default is that the user must respond to each prompt.
- ✦ **--quiet** is the default and produces the least output from the script.
- ✦ **--verbose** outputs more information about the steps taken by the script.
- ✦ **--debug** is the greatest level of output and is as seen in the `/var/log/rhs-hadoop-install.log` log file.



Note

The `/var/log/rhs-hadoop-install.log` log file contains the **--debug** level of detailed information regardless of the verbose level chosen when running the script.

- ✦ **--replica count** is the replica count. You can specify the replica count as 2 or 3. By default, the replica count is 2. The number of bricks must be a multiple of the replica count. The order in which bricks are specified determines how bricks are mirrored with each other. For example, first *n* bricks, where *n* is the replica count.
- ✦ **<node-list>** is: `<node1>:<brickmnt> <node2>[:<brickmnt2>] <node3>[:<brickmnt3>] ... [<nodeN>[:<brickmntN>]`
- ✦ **VOLNAME** is the name of the new Red Hat Gluster Storage volume. By default, the **performance.stat-prefetch=off**, **cluster.eager-lock=on**, and **performance.quick-read=off** performance related options are set on the volume. The new volume will be mounted on all storage nodes, even nodes not directly spanned by the volume, and on the yarn-master node.
- ✦ *volMountPrefix* is the name of the gluster-fuse mount path without the volume name. For example, `/mnt/glusterfs` or `/distributed`.
- ✦ **brickmnt** is the name of the XFS mount for the block devices used by the above nodes, for example, `/mnt/brick1` or `/external/HadoopBrick`. When a Red Hat Gluster Storage volume is created its bricks will have the volume name appended, so **brickmnt** is a prefix for the volume's bricks. For example, if a new volume is named **HadoopVol** then its brick list would be: `<node>:/mnt/brick1/HadoopVol` or `<node>:/external/HadoopBrick/HadoopVol`.



Note

The *node-list* for `create_vol.sh` is similar to the **node-list-spec** used by `setup_cluster.sh` except that a block device is not specified in `create_vol`.

Given below is an example on how to create a volume named *HadoopVol*, using four Red Hat Gluster Storage Servers, each with the same brick mount and mount the volume on `/mnt/glusterfs`

```
./create_vol.sh HadoopVol /mnt/glusterfs rhs-1.hdp:/mnt/brick1 rhs-
2.hdp rhs-3.hdp rhs-4.hdp
```

7.2.4. Deploying and Configuring the HDP 2.1 Stack on Red Hat Gluster Storage using Ambari Manager

Prerequisite

Before deploying and configuring the HDP stack, perform the following steps:

1. Open the terminal window of the server designated to be the Ambari Management Server and replace the **HDP 2.1.GlusterFS repoinfo.xml** file by the **HDP 2.1 repoinfo.xml** file.

```
cp /var/lib/ambari-server/resources/stacks/HDP/2.1/repos/repoinfo.xml
/var/lib/ambari-server/resources/stacks/HDP/2.1.GlusterFS/repos/
```

You will be prompted to overwrite **/2.1.GlusterFS/repos/repoinfo.xml** file, type **yes** to overwrite the file.

2. Restart the Ambari Server.

```
# ambari-server restart
```

Perform the following steps to deploy and configure the HDP stack on Red Hat Gluster Storage:



Important

This section describes how to deploy HDP on Red Hat Gluster Storage. Selecting **HDFS** as the storage selection in the HDP 2.1.GlusterFS stack is not supported. If you want to deploy HDFS, then you must select the HDP 2.1 stack (not HDP 2.1.GlusterFS) and follow the instructions of the Hortonworks documentation.

Ensure to select only the **2.1.GlusterFS** supported stack. The other unsupported ***GlusterFS** stacks might be available for selection.

1. Launch a web browser and enter **http://hostname:8080** in the URL by replacing *hostname* with the hostname of your Ambari Management Server.



Note

If the Ambari Console fails to load in the browser, it is usually because iptables is still running. Stop iptables by opening a terminal window and run **service iptables stop** command.

2. Enter **admin** and **admin** for the username and password.
3. Assign a name to your cluster, such as **MyCluster**.
4. Select the **HDP 2.1 GlusterFS Stack** (if not already selected by default) and click **Next**.
5. On the **Install Options** screen:

- a. For **Target Hosts**, add the YARN server and all the nodes in the trusted storage pool.
 - b. Select **Provide your SSH Private Key to automatically register hosts** and provide your Ambari Server private key that was used to set up passwordless-SSH across the cluster.
 - c. Click **Register and Confirm** button. It may take a while for this process to complete.
6. For **Confirm Hosts**, it may take awhile for all the hosts to be confirmed.
- a. After this process is complete, you can ignore any warnings from the Host Check related to **File and Folder Issues, Package Issues** and **User Issues** as these are related to customizations that are required for Red Hat Gluster Storage.
 - b. Click **Next** and ignore the Confirmation Warning.
7. For **Choose Services**, unselect HDFS and as a minimum select GlusterFS, Ganglia, YARN+MapReduce2, ZooKeeper and Tez.



Note

- ❖ The use of Storm and Falcon have not been extensively tested and as yet are not supported.
- ❖ Do not select the Nagios service, as it is not supported. For more information, see subsection *21.1. Deployment Scenarios* of chapter *21. Administering the Hortonworks Data Platform on Red Hat Gluster Storage* in the *Red Hat Gluster Storage 3.0 Administration Guide*.
- ❖ This section describes how to deploy HDP on Red Hat Gluster Storage. Selecting **HDFS** as the storage selection in the HDP 2.1 GlusterFS stack is not supported. If users wish to deploy HDFS, then they must select the HDP 2.1 (not HDP 2.1.GlusterFS) and follow the instructions in the Hortonworks documentation.

8. For **Assign Masters**, set all the services to your designated YARN Master Server.
- a. For ZooKeeper, select your YARN Master Server and at least 2 additional servers within your cluster.
 - b. Click **Next** to proceed.
9. For **Assign Slaves and Clients**, select all the nodes as **NodeManagers** except the YARN Master Server.
- a. Click **Client** checkbox for each selected node.
 - b. Click **Next** to proceed.
10. On the **Customize Services** screen:
- a. Click **YARN** tab, scroll down to the **yarn.nodemanager.log-dirs** and **yarn.nodemanager.local-dirs** properties and remove any entries that begin with **/mnt/glusterfs/**.

**Important**

New Red Hat Gluster Storage and Hadoop Clusters use the naming convention of `/mnt/glusterfs/volname` as the mount point for Red Hat Gluster Storage volumes. If you have existing Red Hat Gluster Storage volumes that has been created with different mount points, then remove the entries of those mount points.

- b. Update the following property on the YARN tab - Application Timeline Server section:

Key	Value
yarn.timeline-service.leveldb-timeline-store.path	/tmp/hadoop/yarn/timeline

- c. Review other tabs that are highlighted in red. These require you to enter additional information, such as passwords for the respective services.
11. On the **Review** screen, review your configuration and then click **Deploy** button.
 12. On the **Summary** screen, click the **Complete** button and ignore any warnings and the **Starting Services failed** statement. This is normal as there is still some addition configuration that is required before we can start the services.
 13. Click **Next** to proceed to the Ambari Dashboard. Select the YARN service on the top left and click **Stop-All**. Do not click **Start-All** until you perform the steps in section [Section 7.5, "Verifying the Configuration"](#).

7.2.5. Enabling Existing Volumes for use with Hadoop

**Important**

This section is mandatory for every volume you intend to use with Hadoop. It is not sufficient to run the `create_vol.sh` script, you must follow the steps listed in this section as well.

If you have a volume that you would like to analyze with Hadoop, and the volume was created by the above `create_vol.sh` script, then it must be *enabled* to support Hadoop workloads. Execute the `enable_vol.sh` script below to validate the volume's setup and to update Hadoop's `core-site.xml` configuration file which makes the volume accessible to Hadoop.

If you have a volume that was not created by the above `create_vol.sh` script, it is important to ensure that both the bricks and the volumes that you intend to use are properly mounted and configured. If they are not, the `enable_vol.sh` script will display and log volume configuration errors. Perform the following steps to mount and configure bricks and volumes with required parameters on all storage servers:

1. Bricks need to be an XFS formatted logical volume and mounted with the `noatime` and `inode64` parameters. For example, if we assume the logical volume path is `/dev/rhs_vg1/rhs_lv1` and that path is being mounted on `/mnt/brick1` then the `/etc/fstab` entry for the mount point should look as follows:

```
/dev/rhs_vg1/rhs_lv1 /mnt/brick1 xfs noatime,inode64 0 0
```


2. Volumes must be mounted with the **_netdev** setting. Assuming your volume name is **HadoopVol**, the server's FQDN is **rhs-1.hdp** and your intended mount point for the volume is **/mnt/glusterfs/HadoopVol** then the **/etc/fstab** entry for the mount point of the volume must be as follows:

```
rhs-1.hdp:/HadoopVol /mnt/glusterfs/HadoopVol glusterfs _netdev 0 0
```

Volumes that are to be used with Hadoop also need to have specific volume level parameters set on them. In order to set these, shell into a node within the appropriate volume's trusted storage pool and run the following commands (the examples assume the volume name is HadoopVol):

```
# gluster volume set HadoopVol performance.stat-prefetch off
# gluster volume set HadoopVol cluster.eager-lock on
# gluster volume set HadoopVol performance.quick-read off
```

3. Perform the following to create several Hadoop directories on that volume:
 - a. Open the terminal window of one of the Red Hat Gluster Storage nodes in the trusted storage pool and navigate to the **/usr/share/rhs-hadoop-install** directory.
 - b. Run the **bin/add_dirs.sh volume-mount-dir , list-of-directories**, where *volume-mount-dir* is the path name for the glusterfs-fuse mount of the volume you intend to enable for Hadoop (including the name of the volume) and *list-of-directories* is the list generated by running **bin/gen_dirs.sh -d** script. For example:

```
# bin/add_dirs.sh /mnt/glusterfs/HadoopVol $(bin/gen_dirs.sh -d)
```

After completing these 3 steps, you are now ready to run the **enable_vol.sh** script.

Red Hat Gluster Storage-Hadoop has the concept of a **default** volume, which is the volume used when input and/or output URIs are unqualified. Unqualified URIs are common in Hadoop jobs, so defining the default volume, which can be set by **enable_vol.sh** script, is important. The default volume is the first volume appearing in the **fs.glusterfs.volume** property in the **/etc/hadoop/conf/core-site.xml** configuration file. The **enable_vol.sh** supports the **--make-default** option which, if specified, causes the supplied volume to be pre-pended to the above property and thus become the default volume. The default behavior for **enable_vol.sh** is to not make the target volume the default volume, meaning the volume name is appended, rather than prepended, to the above property value.

The **--user** and **--pass** options are required for the **enable_vol.sh** script to login into Ambari instance of the cluster to reconfigure Red Hat Gluster Storage volume related configuration.



Note

The supported volume configuration for Hadoop is Distributed Replicated volume with replica count of 2 or 3. Also, when you run the **enable_vol** script for the first time, you must specify the **--make-default** option.

1. Open the terminal window of the server designated to be the Ambari Management Server and navigate to the **/usr/share/rhs-hadoop-install/** directory.
2. Run the Hadoop Trusted Storage pool configuration script as given below:

```
# enable_vol.sh [-y] [--quiet | --verbose | --debug] [--make-default]
```

```
[--hadoop-mgmt-node node] [--yarn-master yarn-node][--rhs-node
storage-node] [--user ambari-admin-user] [--pass admin-password]
VOLNAME
```

For Example;

```
# enable_vol.sh --yarn-master yarn.hdp --rhs-node rhs-1.hdp HadoopVol
--make-default
```

- ✧ **VOLNAME** is the name of the Red Hat Gluster Storage volume.
- ✧ **--yarn-master** is the hostname of the YARN resource manager server. Default is localhost.
- ✧ **--rhs-node** is the name of any of the existing Red Hat Gluster Storage nodes in the cluster. It is required unless this script is being run from a storage node. This value is necessary in order to run the gluster CLI.
- ✧ **--user** and **--pass** are required to update the hadoop configuration files (core-site.xml) residing on each node spanned by the volume. You must update **core-site.xml** file for a volume to be visible to Hadoop jobs. These options are defaulted to the Ambari defaults.
- ✧ **--make-default** indicates that **VOLNAME** is to be made the default volume by pre-pending it to the **core-site.xml** volumes list property. The default behavior is to not alter the default volume name in **core-site.xml** file.
- ✧ **--quiet** is the default and produces the least output from the script.
- ✧ **--verbose** outputs more information about the steps taken by the script.
- ✧ **--debug** is the greatest level of output and is same as seen in the **/var/log/rhs-hadoop-install.log** log file.



Note

The **/var/log/rhs-hadoop-install.log** log file contains the **--debug** level of detailed information regardless of the verbose level chosen when running the script.

- ✧ **-y** causes all prompts to be auto-answered "yes". The default is that the user must respond to each prompt.
- ✧ **VOLNAME** is the name of the new Red Hat Gluster Storage volume.



Note

If **--yarn-master** and/or **--rhs-node** options are omitted then the default of localhost (the node from which the script is being executed) is assumed. Example:

```
./enable_vol.sh --yarn-master yarn.hdp --rhs-node rhs-1.hdp
HadoopVol --make-default
```

7.3. Adding and Removing Users

Only users that are part of the *Hadoop* group (that was created in the prerequisites section) will be able to submit Hadoop Jobs. This can be relatively easily if you are using LDAP for authentication, but if you are not, you need to run the command given below on each server in the trusted storage pool and the YARN Master Server, for each user you add.

```
# useradd -u 1005 -g hadoop tom
```



Note

The UID of 1005 is arbitrary, you can specify the UID of your choice, but it must be both unique and consistent across the trusted storage pools. Also, the Hadoop Container Executor default properties require that all UIDs be greater or equal to 1000. Thus, 999 is not acceptable as user ID, but 1000 is acceptable. If you want to lower the default minimum acceptable UID, modify the `min.user.id` value in the `/etc/hadoop/conf/container-executor.cfg` file on every Red Hat Gluster Storage server that is running a NodeManager.

After adding a user who is part of the *hadoop* group, you need to create a user directory for that user within the default Red Hat Gluster Storage Hadoop Volume. The default Red Hat Gluster Storage Hadoop Volume is the first volume that was created and enabled for Hadoop and is usually called **HadoopVol1** according to the examples given in installation instructions.

Run the following commands from a server within the Red Hat Gluster Storage trusted storage pool (replacing *user_name* with the actual user name) for each user that you are adding. You must run this command only once on the default Volume. If you add subsequent volumes, you do not need to repeat this step.

```
# mkdir /mnt/glusterfs/HadoopVol1/user/<username>
# chown <username>:hadoop /mnt/glusterfs/HadoopVol1/user/<username>
# chmod 0755 /mnt/glusterfs/HadoopVol1/user/<username>
```

Removing Users

To disable a user from submitting Hadoop Jobs, remove the user from the Hadoop group.

7.4. Disabling a Volume for use with Hadoop

To keep a volume available for Red Hat Gluster Storage workloads, but not accessible to Hadoop jobs, you can disable the volume for use with Hadoop. Disabling a volume means that Hadoop jobs no longer have access to any data contained in the target volume; however, non-Hadoop workloads will continue to have access to this volume. The target volume is not deleted nor in anyway made unavailable to Red Hat Gluster Storage access. At a later time, disabled volumes can be re-enabled by executing the `enable_vol.sh` script.

For information on enabling volumes using `enable_vol.sh` script, see [Section 7.2.5, “Enabling Existing Volumes for use with Hadoop”](#).

A volume is disabled by modifying the `/etc/hadoop/conf/core-site.xml` file. Specifically, the volume's name is removed from the `fs.glusterfs.volumes` property list, and the `fs.glusterfs.volume.fuse.volname` property is deleted. All Ambari services are automatically restarted.

Perform the following steps to disable the volume:

1. Open the terminal window of the server designated to be the Ambari Management Server and navigate to the `/usr/share/rhs-hadoop-install/` directory.
2. Run the Hadoop cluster configuration script as shown below:

```
disable_vol.sh [-y] [--quiet | --verbose | --debug] [--hadoop-mgmt-
node node] [--yarn-master node] [--rhs-node storage-node][--user
admin-user] [--pass admin-password] VOLNAME
```

For example,

```
disable_vol.sh --rhs-node rhs-1.hdp --yarn-master yarn.hdp HadoopVol
```

7.5. Verifying the Configuration

Open a terminal session on the YARN Master Server and run the following commands:

```
# chown -R yarn:hadoop /mnt/brick1/hadoop/yarn/
# chmod -R 0755 /mnt/brick1/hadoop/yarn/
```

Prior to submitting any jobs, ensure that the trusted storage pool is running. Launch the Ambari Dashboard (<http://ambari-server-hostname:8080>) and select the YARN service and then click the **Start - All** button.



Note

Stopping and starting the services takes some time. If one of the services fails to start, it will often start if you select the service and restart it.

The default volume (usually HadoopVol) must always be running when you are running Hadoop Jobs on other volumes. This is because the user directories for all the deployed Hadoop processes are stored on this volume. For example, if you have created and enabled 3 volumes for use with Hadoop (HadoopVol, MyVolume1, MyVolume2) and you are running a Hadoop Job that reads from MyVolume1 and writes to MyVolume2, then HadoopVol must still be running.

To test your trusted storage pool, shell into the YARN Master server and navigate to the `/usr/lib/hadoop/` directory. Then `su` to one of the users you have enabled for Hadoop (such as tom) and submit a Hadoop Job:

```
# su tom
# cd /usr/lib/hadoop
# bin/hadoop jar /usr/lib/hadoop-mapreduce/hadoop-mapreduce-examples-
2.4.0.2.1.7.0-784.jar teragen 1000 in
```

TeraGen only generates data. TeraSort reads and sorts the output of TeraGen. In order to fully test the cluster is operational, one needs to run TeraSort as well.

```
# bin/hadoop jar /usr/lib/hadoop-mapreduce/hadoop-mapreduce-examples-2.4.0.2.1.7.0-784.jar terasort in out
```

For more information on using specific components within the Hadoop Ecosystem, see *Chapter 2. Understanding the Hadoop Ecosystem* in the *Hortonworks Data Platform* documentation.

7.6. Troubleshooting

This section describes the most common troubleshooting scenarios related to Hadoop and Red Hat Gluster Storage integration.

Deployment of HDP 2.1 on an LDAP enabled cluster fails with "Execution of 'groupmod hadoop' returned 10. groupmod: group 'hadoop' does not exist in /etc/group"

This is due to a bug caused by Ambari expecting a local hadoop group on an LDAP enabled cluster. Due to the fact the users and groups are centrally managed with LDAP, Ambari is not able to find the group. In order to resolve this issue:

1. Shell into the Ambari Server and navigate to `/var/lib/ambari-server/resources/scripts`
2. Replace the \$AMBARI-SERVER-FQDN with the FQDN of your Ambari Server and the \$AMBARI-CLUSTER-NAME with the cluster name that you specified for your cluster within Ambari and run the following command:

```
./configs.sh set $AMBARI-SERVER-FQDN $AMBARI-CLUSTER-NAME global ignore_groupsusers_create "true"
```

3. In the Ambari console, click **Retry** in the **Cluster Installation Wizard**.

The WebHCAT service does not start

This is due to a permissions bug in WebHCAT. In order to start the service, it must be restarted multiple times and requires several file permissions to be changed. To resolve this issue, begin by starting the service. After each start attempt, WebHCAT will attempt to copy a different jar with root permissions. Every time it does this you need to `chmod 755` the jar file in `/mnt/glusterfs/HadoopVolumeName/apps/webhcat`. The three files it copies to this directory are **hadoop-streaming-2.4.0.2.1.5.0-648.jar**, **HDP-webhcat/hive.tar.gz** and **HDP-webhcat/pig.tar.gz**. After you have set the permissions on all three files, the service will start and be operational on the fourth attempt.

Exception stating that "job.jar changed on src file system" or "job.xml changed on src file system".

This error occurs if the clocks are not synchronized across the trusted storage pool. The time in all the servers must be uniform in the trusted storage pool. It is recommended to set up a NTP (Network Time Protocol) service to keep the bricks' time synchronized, and avoid out-of-time synchronization effects.

For more information on configuring NTP, see https://access.redhat.com/documentation/en-US/Red_Hat_Enterprise_Linux/6/html/Migration_Planning_Guide/sect-Migration_Guide-Networking-NTP.html

While running a Hadoop job, if `FileNotFoundException` exception is displayed with `jobtoken does not exist` message:

This error occurs when the user IDs (UID) and group IDs (GID) are not consistent across the trusted storage pool. For example, user "tom" has a UID of 1002 on server1, but on server2, the user *tom* has a UID of 1003. The simplest and recommended approach is to leverage LDAP authentication to resolve this issue. After

creating the necessary users and groups on an LDAP server, the servers within the trusted storage pool can be configured to use the LDAP server for authentication. For more information on configuring authentication, see *Chapter 12. Configuring Authentication of Red Hat Enterprise Linux 6 Deployment Guide*.

Chapter 8. Updating to Red Hat Gluster Storage 3.1.x



Note

Updating from Red Hat Enterprise Linux 6 based Red Hat Gluster Storage to Red Hat Enterprise Linux 7 based Red Hat Gluster Storage is not supported.



Warning

In Red Hat Enterprise Linux 7 based Red Hat Gluster Storage, updating to Red Hat Gluster Storage 3.1.x will reload firewall rules. All the runtime-only changes done until the reload, if it was not included in the permanent configuration, will be lost.

A software update is a minor release that includes bug fixes for features, software enhancements etc. Red Hat strongly recommends you update your Red Hat Gluster Storage software regularly with the latest security patches and upgrades. Associate your system with a content server to update existing content or to install new content. This ensures that your system is up-to-date with security updates and upgrade

To keep your Red Hat Gluster Storage system up-to-date, associate the system with the RHN or your locally-managed content service. This ensures your system automatically stays up-to-date with security patches and bug fixes.



Note

- ❖ Asynchronous errata update releases of Red Hat Gluster Storage include all fixes that were released asynchronously since the last release as a cumulative update.
- ❖ When there are large number of snapshots, ensure to deactivate the snapshots before performing an update. The snapshots can be activated after the update is complete. For more information, see *Chapter 4.1 Starting and Stopping the glusterd service* in the *Red Hat Gluster Storage 3 Administration Guide*.

8.1. Updating Red Hat Gluster Storage from 3.0.x to 3.1.x in the Offline Mode

If you have a distributed volume then you must opt for an offline upgrade. Red Hat Gluster Storage supports in-service software upgrade from Red Hat Gluster Storage 2.1 only for replicate and distributed-replicate volume. For more information about in-service software upgrade, see [Section 9.2.3, “In-Service Software Upgrade”](#)

To update NFS-Ganesha, perform the steps described in [Section 8.2, “Updating NFS-Ganesha in the Offline Mode”](#)



Important

- ✦ If **dracut** packages are previously installed, then exclude the **dracut** packages while updating to Red Hat Gluster Storage 3.1 during offline ISO update using the following command:

```
# yum update -x dracut -x dracut-kernel
```

- ✦ Offline upgrade results in a downtime as the volume is offline during upgrade.

To migrate the volume to a thinly provisioned volume in the offline mode, perform the following steps:

1. Make a complete backup using a reliable backup solution. This Solution covers one possible approach: <https://access.redhat.com/solutions/1484053>.

If you use an alternative backup solution:

- ✦ Ensure that you have sufficient space available for a complete backup.
 - ✦ Copy the `.glusterfs` directory before copying any data files.
 - ✦ Ensure that no new files are created on Red Hat Gluster Storage file systems during the backup.
 - ✦ Ensure that all extended attributes, ACLs, owners, groups, and symbolic and hard links are backed up.
 - ✦ Check that the backup restores correctly before you continue with the migration.
2. Delete the existing Logical Volume (LV) and recreate a new thinly provisioned LV. For more information, see https://access.redhat.com/site/documentation/en-US/Red_Hat_Enterprise_Linux/6/html/Logical_Volume_Manager_Administration/thinprovisioned_volumes.html
 3. Restore backed up content to the newly created thinly provisioned LV.

When you are certain that your backup works, execute the following steps to update Red Hat Gluster Storage in the offline mode:

```
# yum update
```

The update process automatically restarts the **glusterd** management daemon. The `glusterfs` server processes, **glusterfsd** is not restarted by default since restarting this daemon affects the active read and write operations.

After all the nodes in the cluster are updated, the volume must be restarted for the changes to be applied. Red Hat recommends that you restart the system when there are no active read and write operations running on the cluster.

To restart the volume, run the following commands:

```
# gluster volume stop volname
# gluster volume start volname
```

4. When all nodes have been upgraded, run the following command to update the **op-version** of the cluster. This helps to prevent any compatibility issues within the cluster.


```
# gluster volume set all cluster.op-version 30707
```

8.2. Updating NFS-Ganesha in the Offline Mode

Execute the following steps to update the NFS-Ganesha service from Red Hat Gluster Storage 3.1 to Red Hat Gluster Storage 3.1.1 or later:



Note

NFS-Ganesha does not support in-service update, hence all the running services and IO's have to be stopped before starting the update process.

1. Stop the nfs-ganesha service on all the nodes of the cluster by executing the following command:

```
# service nfs-ganesha stop
```

2. Verify the status by executing the following command on all the nodes:

```
# pcs status
```

3. Stop the glusterd service and kill any running gluster process on all the nodes:

```
# service glusterd stop
# pkill glusterfs
# pkill glusterfsd
```

4. Place the entire cluster in standby mode on all the nodes by executing the following command:

```
# pcs cluster standby <node-name>
```

For example:

```
# pcs cluster standby nfs1
# pcs status

Cluster name: G1455878027.97
Last updated: Tue Feb 23 08:05:13 2016
Last change: Tue Feb 23 08:04:55 2016
Stack: cman
Current DC: nfs1 - partition with quorum
Version: 1.1.11-97629de
4 Nodes configured
16 Resources configured

Node nfs1: standby
Online: [ nfs2 nfs3 nfs4 ]

....
```

5. Stop the cluster software on all the nodes using pcs, by executing the following command:

```
# pcs cluster stop <node-name>
```

Ensure that it stops pacemaker and cman.

For example:

```
# pcs cluster stop nfs1
nfs1: Stopping Cluster (pacemaker)...
nfs1: Stopping Cluster (cman)...
```

6. Update the NFS-Ganesha packages on all the nodes by executing the following command:

```
# yum update nfs-ganesha
# yum update glusterfs-ganesha
```



Note

- » This will install glusterfs-ganesha and nfs-ganesha-gluster package along with other dependent gluster packages.
- » Some warnings might appear during the upgrade related to shared_storage which can be ignored.
- » Verify on all the nodes that the required packages are updated, the nodes are fully functional and are using the correct versions. If anything does not seem correct, then do not proceed until the situation is resolved. Contact the Red Hat Global Support Services for assistance if needed.

7. Start the cluster software on all the nodes by executing the following command:

```
# pcs cluster start <node-name>
```

For example:

```
# pcs cluster start nfs1
nfs1: Starting Cluster...
```

8. Check the pcs status output to determine if everything appears as it should. Once the nodes are functioning properly, reactivate it for service by taking it out of standby mode by executing the following command:

```
# pcs cluster unstandby <node-name>
```

For example:

```
# pcs cluster unstandby nfs1

# pcs status
Cluster name: G1455878027.97
Last updated: Tue Feb 23 08:14:01 2016
Last change: Tue Feb 23 08:13:57 2016
```

```
Stack: cman
Current DC: nfs3 - partition with quorum
Version: 1.1.11-97629de
4 Nodes configured
16 Resources configured

Online: [ nfs1 nfs2 nfs3 nfs4 ]

....
```

Make sure there are no failures and unexpected results.

- Start glusterd service on all the nodes by executing the following command:

```
# service glusterd start
```

- Mount the shared storage volume created before update on all the nodes:

```
# mount -t glusterfs localhost:/gluster_shared_storage
/var/run/gluster/shared_storage
```

- Verify if glusterfs-nfs is running after the update on all the nodes:

```
# ps -aux|grep nfs
```

- Disable glusterfs-nfs running (if, on any node):

```
# gluster volume set <volname> nfs.disable on
```

- Start the nfs-ganesha service on all the nodes by executing the following command:

```
# service nfs-ganesha start
```



Important

Verify that all the nodes are fully functional. If anything does not seem correct, then do not proceed until the situation is resolved. Contact Red Hat Global Support Services for assistance if required.

8.3. In-service Software Update to Red Hat Gluster Storage 3.1.x from 3.y.z



Important

In-service software update includes minor bug fixes and enhancements. You can update your system from Red Hat Gluster Storage 3.0.x to 3.1.y or from 3.1.x to 3.1.y.

To update your system to Red Hat Gluster Storage 3.1.x, follow these steps. The following steps must be performed on each node of the replica pair:



Note

- ✦ NFS-Ganesha does not support in-service update, hence all the running services and IO's have to be stopped before starting the update process. For more information see, [Section 8.2, "Updating NFS-Ganesha in the Offline Mode"](#).
- ✦ Ensure that the system is registered to the Red Hat Network. For more information refer to, [Section 2.6, "Subscribing to the Red Hat Gluster Storage Server Channels"](#)
- ✦ Updating Red Hat Gluster Storage using ISO can be performed only from the previous release. This means that upgrading to Red Hat Gluster Storage 3.1 using ISO can only be done from Red Hat Gluster Storage 3.0 Update 4. For a complete list of supported Red Hat Gluster Storage releases, see [Section 1.5, "Supported Versions of Red Hat Gluster Storage"](#).
- ✦ Ensure not to perform any volume operations while the cluster is getting updated.



Warning

- ✦ While Red Hat Gluster Storage supports in-service upgrades, the SMB and CTDB services do not. The procedure outlined in this section does involve service interruptions to the SMB and CTDB services.
- ✦ Samba version 3 is being deprecated from Red Hat Gluster Storage 3.0 Update 4. Further updates will not be provided for samba-3.x. It is recommended that you upgrade to Samba-4.x, which is provided in a separate channel or repository, for all updates including the security updates.
- ✦ Downgrading Samba from Samba 4.x to Samba 3.x is not supported.
- ✦ Ensure that Samba is upgraded on all the nodes simultaneously, as running different versions of Samba in the same cluster will lead to data corruption.

1. Stop the gluster services on the storage server using the following commands:

```
# service glusterd stop
# pkill glusterfs
# pkill glusterfsd
```

- a. For Red Hat Gluster Storage 3.0.4 or later on Red Hat Enterprise Linux 6.7, if you require Samba, then enable the following repository:

```
# subscription-manager repos --enable=rh-gluster-3-samba-for-rhel-6-server-rpms
```

- b. Stop the CTDB and SMB services across all nodes in the Samba cluster using the following command. This is because different versions of Samba cannot run in the same Samba cluster.

```
# service ctdb stop
```

Stopping the CTDB service also stops the SMB service.

- c. To verify if the CTDB and SMB services are stopped, execute the following command:

```
ps axf | grep -E '(ctdb|smb|winbind|nmb)[d]'
```

- Update the server using the following command:

```
# yum update
```

- Reboot the server if a kernel update was included as part of the update process in the previous step.



Note

If a reboot of the server was not required, then start the gluster services on the storage server using the following command:

```
# service glusterd start
```

- If the CTDB and SMB services were stopped earlier, then start the services by executing the following command.

```
# service ctdb start
```

- To verify if the CTDB and SMB services have started, execute the following command:

```
ps axf | grep -E '(ctdb|smb|winbind|nmb)[d]'
```

- Start self-heal on the volume.

```
# gluster volume heal volname
```

- To verify if you have upgraded to the latest version of the Red Hat Gluster Storage server execute the following command:

```
# gluster --version
```

- Ensure that all the bricks are online. To check the status, execute the following command:

```
# gluster volume status
```

- Ensure self-heal is complete on the replica using the following command:

```
# gluster volume heal volname info
```

- Repeat the above steps on the other node of the replica pair.



Note

In the case of a distributed-replicated setup, repeat the above steps on all replica pairs.

- When all nodes have been upgraded, run the following command to update the *op-version* of the

cluster. This helps to prevent any compatibility issues within the cluster.

```
# gluster volume set all cluster.op-version 30707
```

Chapter 9. Upgrading from Red Hat Gluster Storage 2.1.x to Red Hat Gluster Storage 3.1

This chapter describes the procedure to upgrade to Red Hat Gluster Storage 3.1 from Red Hat Gluster Storage 3.0.



Note

Upgrading from Red Hat Enterprise Linux 6 based Red Hat Gluster Storage to Red Hat Enterprise Linux 7 based Red Hat Gluster Storage is not supported.

9.1. Offline Upgrade from Red Hat Gluster Storage 2.1.x to Red Hat Gluster Storage 3.1

9.1.1. Upgrading from Red Hat Gluster Storage 2.1.x to Red Hat Gluster Storage 3.1 for Systems Subscribed to Red Hat Network

Pre-Upgrade Steps:

1. Unmount the clients using the following command:

```
umount mount-point
```

2. Stop the volumes using the following command:

```
gluster volume stop volname
```

3. Unmount the data partition(s) on the servers using the following command:

```
umount mount-point
```

4. To verify if the volume status is stopped, use the following command:

```
# gluster volume info
```

If there is more than one volume, stop all of the volumes.

5. Stop the **glusterd** services on all the servers using the following command:

```
# service glusterd stop
```

yum Upgrade Steps:



Important

- ✦ You can upgrade to Red Hat Gluster Storage 3.1 from Red Hat Gluster Storage 2.1 Update 4 or later. If your current version is lower than Update 4, then upgrade it to Update 4 before upgrading to Red Hat Gluster Storage 3.1.
- ✦ Upgrade the servers before upgrading the clients.

1. Execute the following command to kill all gluster processes:

```
# pkill gluster
```

2. To check the system's current subscription status run the following command:

```
# migrate-rhs-classic-to-rhsm --status
```



Note

The **migrate-rhs-classic-to-rhsm** command is only available in Red Hat Gluster Storage 2.1 Update 4 or higher. If your system doesn't have this command, ensure that you have updated the *redhat-storage-release* package to the latest version.

3. Execute the following command to migrate from Red Hat Network Classic to Red Hat Subscription Manager.

```
# migrate-rhs-classic-to-rhsm --rhn-to-rhsm
```

4. Enable the Red Hat Gluster Storage 3.0 repositories with the following command:

```
# migrate-rhs-classic-to-rhsm --upgrade --version 3
```

- a. If you require Samba, and you are using Red Hat Gluster Storage 3.0.4 or later on Red Hat Enterprise Linux 6.7, enable the following repository:

```
# subscription-manager repos --enable=rh-gluster-3-samba-for-rhel-6-server-rpms
```



Warning

- ✦ The Samba version 3 is being deprecated from Red Hat Gluster Storage 3.0 Update 4. Further updates will not be provided for samba-3.x. It is recommended that you upgrade to Samba-4.x, which is provided in a separate channel or repository, for all updates including the security updates.
- ✦ Downgrade of Samba from Samba 4.x to Samba 3.x is not supported.
- ✦ Ensure that Samba is upgraded on all the nodes simultaneously, as running different versions of Samba in the same cluster will lead to data corruption.

- b. Stop the CTDB and SMB services across all nodes in the Samba cluster using the following command. This is because different versions of Samba cannot run in the same Samba cluster.

```
# service ctdb stop
```

- c. To verify if the CTDB and SMB services are stopped, execute the following command:

```
ps axf | grep -E '(ctdb|smb|winbind|nmb)[d]'
```

5. To verify if the migration from Red Hat Network Classic to Red Hat Subscription Manager is successful, execute the following command:

```
# migrate-rhs-classic-to-rhsm --status
```

6. To upgrade the server from Red Hat Gluster Storage 3.0 to 3.1, use the following command:

```
# yum update
```



Note

It is recommended to add the child channel of Red Hat Enterprise Linux 6 that contains the native client to refresh the clients and access the new features in Red Hat Gluster Storage 3.1. For more information, refer to *Installing Native Client* in the *Red Hat Gluster Storage Administration Guide*.

7. Reboot the servers. This is required as the kernel is updated to the latest version.
8. When all nodes have been upgraded, run the following command to update the **op-version** of the cluster. This helps to prevent any compatibility issues within the cluster.

```
# gluster volume set all cluster.op-version 30707
```

9.1.2. Upgrading from Red Hat Gluster Storage 2.1.x to Red Hat Gluster Storage 3.1 for Systems Subscribed to Red Hat Satellite Server

1. Unmount all the clients using the following command:

```
umount mount-name
```

2. Stop the volumes using the following command:

```
# gluster volume stop volname
```

3. Unmount the data partition(s) on the servers using the following command:

```
umount mount-point
```

4. Ensure that the Red Hat Gluster Storage 2.1 server is updated to Red Hat Gluster Storage 2.1 Update 4 or later, by running the following command:

```
# yum update
```

5. Create an Activation Key at the Red Hat Satellite Server, and associate it with the following channels. For more information, refer to [Section 2.5, "Installing from Red Hat Satellite Server"](#)

```
Base Channel: Red Hat Enterprise Linux Server (v.6 for 64-bit x86_64)
```

```
Child channels:
```

```
RHEL Server Scalable File System (v. 6 for x86_64)
```

```
Red Hat Gluster Storage Server 3 (RHEL 6 for x86_64)
```

- a. For Red Hat Gluster Storage 3.0.4 or later, if you require the Samba package add the following child channel:

```
Red Hat Gluster 3 Samba (RHEL 6 for x86_64)
```

6. Unregister your system from Red Hat Satellite by following these steps:
 - a. Log in to the Red Hat Satellite server.
 - b. Click on the **Systems** tab in the top navigation bar and then the name of the old or duplicated system in the **System List**.
 - c. Click the **delete system** link in the top-right corner of the page.
 - d. To confirm the system profile deletion by clicking the **Delete System** button.
7. On the updated Red Hat Gluster Storage 3.0 Update 4 server, run the following command:

```
# rhnreg_ks --username username --password password --force --  
activationkey Activation Key ID
```

This uses the prepared Activation Key and re-registers the system to the Red Hat Gluster Storage 3.0 channels on the Red Hat Satellite Server.

8. Verify if the channel subscriptions have changed to the following:

```
# rhn-channel --list  
rhel-x86_64-server-6  
rhel-x86_64-server-6-rhs-3  
rhel-x86_64-server-sfs-6
```

For Red Hat Gluster Storage 3.0.4 or later, if you have enabled the Samba channel, then verify if you have the following channel:

```
rhel-x86_64-server-6-rh-gluster-3-samba
```

9. Run the following command to upgrade to Red Hat Gluster Storage 3.0.

```
# yum update
```

10. Reboot, and run volume and data integrity checks.

- When all nodes have been upgraded, run the following command to update the *op-version* of the cluster. This helps to prevent any compatibility issues within the cluster.

```
# gluster volume set all cluster.op-version 30707
```

9.1.3. Upgrading from Red Hat Gluster Storage 2.1.x to Red Hat Gluster Storage 3.1 using an ISO

This method re-images the software in the storage server by keeping the data intact after a backup-restore of the configuration files. This method is quite invasive and should only be used if a local yum repository or an Internet connection to access Red Hat Network is not available.

The preferable method to upgrade is using the **yum** command. For more information, refer to [Section 9.1.1, “Upgrading from Red Hat Gluster Storage 2.1.x to Red Hat Gluster Storage 3.1 for Systems Subscribed to Red Hat Network”](#).



Note

- ✦ Ensure that you perform the steps listed in this section on all the servers.
- ✦ In the case of a geo-replication set-up, perform the steps listed in this section on all the master and slave servers.
- ✦ You cannot access data during the upgrade process, and a downtime should be scheduled with applications, clients, and other end-users.

- Get the volume information and peer status using the following commands:

```
# gluster volume info
```

The command displays the volume information similar to the following:

```
Volume Name: volname
Type: Distributed-Replicate
Volume ID: d6274441-65bc-49f4-a705-fc180c96a072
Status: Started
Number of Bricks: 2 x 2 = 4
Transport-type: tcp
Bricks:
Brick1: server1:/rhs/brick1/brick1
Brick2: server2:/rhs/brick1/brick2
Brick3: server3:/rhs/brick1/brick3
Brick4: server4:/rhs/brick1/brick4
Options Reconfigured:
geo-replication.indexing: on
```

```
# gluster peer status
```

The command displays the peer status information similar to the following:

```
# gluster peer status
Number of Peers: 3
```

```

Hostname: server2
Port: 24007
Uuid: 2dde2c42-1616-4109-b782-dd37185702d8
State: Peer in Cluster (Connected)

Hostname: server3
Port: 24007
Uuid: 4224e2ac-8f72-4ef2-a01d-09ff46fb9414
State: Peer in Cluster (Connected)

Hostname: server4
Port: 24007
Uuid: 10ae22d5-761c-4b2e-ad0c-7e6bd3f919dc
State: Peer in Cluster (Connected)

```



Note

Make a note of this information to compare with the output after upgrading.

- In case of a geo-replication set-up, stop the geo-replication session using the following command:

```
# gluster volume geo-replication master_volname
slave_node::slave_volname stop
```

- In case of a CTDB/Samba set-up, stop the CTDB service using the following command:

```
# service ctdb stop ;Stopping the CTDB service also stops the SMB
service
```

- Verify if the CTDB and the SMB services are stopped using the following command:

```
ps axf | grep -E '(ctdb|smb|winbind|nmb)[d]'
```

- In case of an object store set-up, turn off object store using the following commands:

```
# service gluster-swift-proxy stop
# service gluster-swift-account stop
# service gluster-swift-container stop
# service gluster-swift-object stop
```

- Stop all the gluster volumes using the following command:

```
# gluster volume stop volname
```

- Stop the **glusterd** services on all the nodes using the following command:

```
# service glusterd stop
```

- If there are any gluster processes still running, terminate the process using **kill**.

8. Ensure all gluster processes are stopped using the following command:

```
# pgrep gluster
```

9. Back up the following configuration directory and files on the backup directory:

```
/var/lib/glusterd, /etc/swift, /etc/samba, /etc/ctdb, /etc/glusterfs.  
/var/lib/samba, /var/lib/ctdb
```

Ensure that the backup directory is not the operating system partition.

```
# cp -a /var/lib/glusterd /backup-disk/  
# cp -a /etc/swift /backup-disk/  
# cp -a /etc/samba /backup-disk/  
# cp -a /etc/ctdb /backup-disk/  
# cp -a /etc/glusterfs /backup-disk/  
# cp -a /var/lib/samba /backup-disk/  
# cp -a /var/lib/ctdb /backup-disk/
```

Also, back up any other files or configuration files that you might require to restore later. You can create a backup of everything in `/etc/`.

10. Locate and unmount the data disk partition that contains the bricks using the following command:

```
# mount | grep backend-disk  
# umount /dev/device
```

For example, use the `gluster volume info` command to display the `backend-disk` information:

```
Volume Name: volname  
Type: Distributed-Replicate  
Volume ID: d6274441-65bc-49f4-a705-fc180c96a072  
Status: Started  
Number of Bricks: 2 x 2 = 4  
Transport-type: tcp  
Bricks:  
Brick1: server1:/rhs/brick1/brick1  
Brick2: server2:/rhs/brick1/brick2  
Brick3: server3:/rhs/brick1/brick3  
Brick4: server4:/rhs/brick1/brick4  
Options Reconfigured:  
geo-replication.indexing: on
```

In the above example, the `backend-disk` is mounted at `/rhs/brick1`

```
# findmnt /rhs/brick1  
TARGET          SOURCE          FSTYPE OPTIONS  
/rhs/brick1 /dev/mapper/glustervg-brick1 xfs  
rw,relatime,attr2,delaylog,no  
# umount /rhs/brick1
```

11. Insert the DVD with Red Hat Gluster Storage 3.1 ISO and reboot the machine. The installation starts automatically. You must install Red Hat Gluster Storage on the system with the same network credentials, IP address, and host name.



Warning

During installation, while creating a custom layout, ensure that you choose **Create Custom Layout** to proceed with installation. If you choose **Replace Existing Linux System(s)**, it formats all disks on the system and erases existing data.

Select **Create Custom Layout**. Click **Next**.

Which type of installation would you like?

Use All Space
Removes all partitions on the selected device(s). This includes partitions created by other operating systems.
Tip: This option will remove data from the selected device(s). Make sure you have backups.

Replace Existing Linux System(s)
Removes only Linux partitions (created from a previous Linux installation). This does not remove other partitions you may have on your storage device(s) (such as VFAT or FAT32).
Tip: This option will remove data from the selected device(s). Make sure you have backups.

Shrink Current System
Shrinks existing partitions to create free space for the default layout.

Use Free Space
Retains your current data and partitions and uses only the unpartitioned space on the selected device(s), assuming you have enough free space available.

Create Custom Layout
Manually create your own custom layout on the selected device(s) using our partitioning tool.

Encrypt system
 Review and modify partitioning layout

Figure 9.1. Custom Layout Window

12. Select the disk on which to install Red Hat Gluster Storage. Click **Next**.

For Red Hat Gluster Storage to install successfully, you must select the same disk that contained the operating system data previously.



Warning

While selecting your disk, do not select the disks containing bricks.

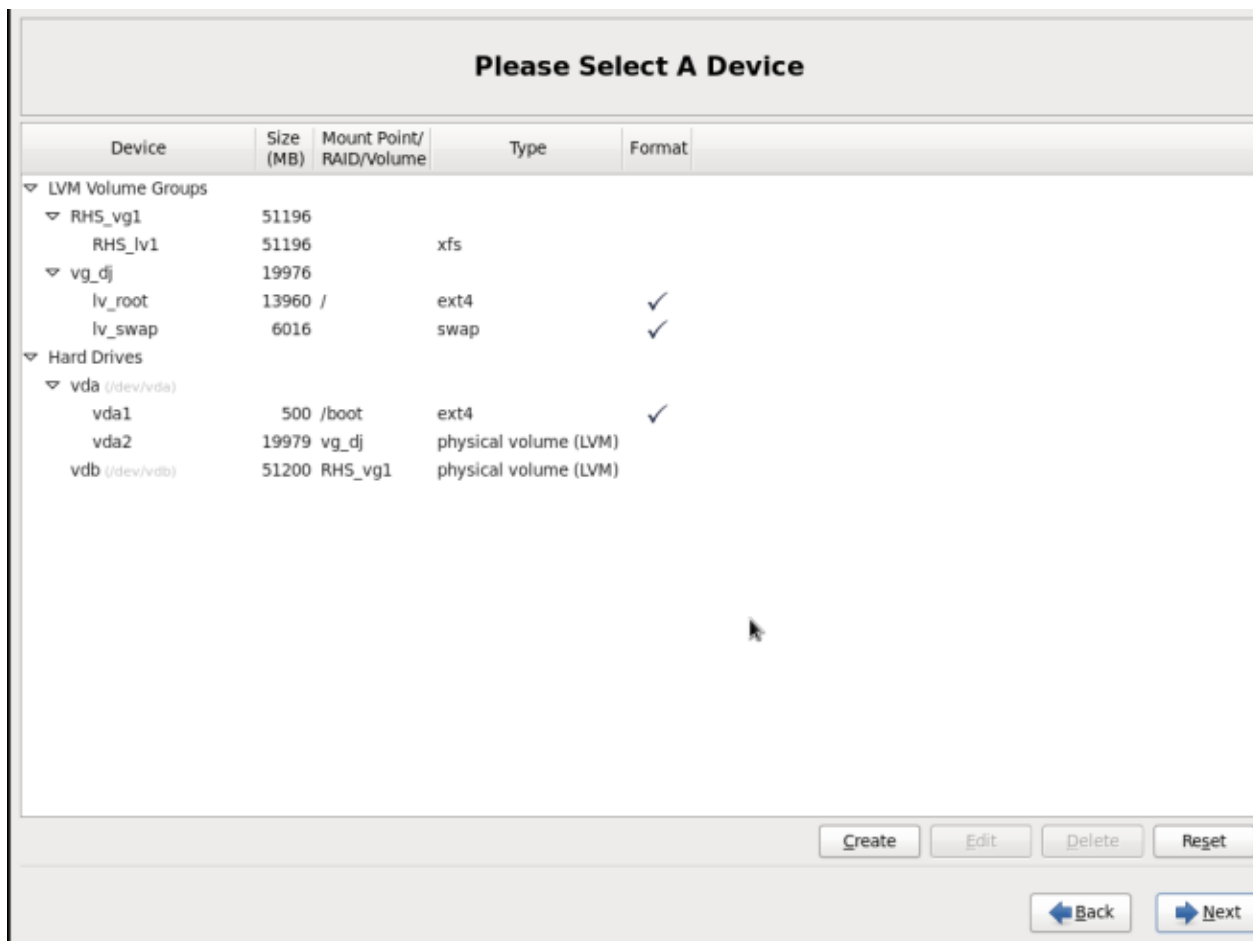


Figure 9.2. Select Disk Partition Window

13. After installation, ensure that the host name and IP address of the machine is the same as before.



Warning

If the IP address and host name are not the same as before, you will not be able to access the data present in your earlier environment.

14. After installation, the system automatically starts **glusterd**. Stop the gluster service using the following command:

```
# service glusterd stop
Stopping glusterd: [OK]
```

15. Add entries to **/etc/fstab** to mount data disks at the same path as before.



Note

Ensure that the mount points exist in your trusted storage pool environment.

16. Mount all data disks using the following command:

```
# mount -a
```

17. Back up the latest **glusterd** using the following command:

```
# cp -a /var/lib/glusterd /var/lib/glusterd-backup
```

18. Copy **/var/lib/glusterd** and **/etc/glusterfs** from your backup disk to the OS disk.

```
# cp -a /backup-disk/glusterd/* /var/lib/glusterd  
# cp -a /backup-disk/glusterfs/* /etc/glusterfs
```



Note

Do not restore the swift, samba and ctdb configuration files from the backup disk. However, any changes in swift, samba, and ctdb must be applied separately in the new configuration files from the backup taken earlier.

19. Copy back the latest hooks scripts to **/var/lib/glusterd/hooks**.

```
# cp -a /var/lib/glusterd-backup/hooks /var/lib/glusterd
```

20. Ensure you restore any other files from the backup that was created earlier.

21. You must restart the **glusterd** management daemon using the following commands:

```
# glusterd --xlator-option *.upgrade=yes -N  
# service glusterd start  
Starting glusterd: [OK]
```

22. Start the volume using the following command:

```
# gluster volume start volname force  
volume start: volname : success
```



Note

Repeat the above steps on all the servers in your trusted storage pool environment.

23. In case you have a pure replica volume (1*n) where n is the replica count, perform the following additional steps:

- a. Run the **fix-layout** command on the volume using the following command:

```
# gluster volume rebalance volname fix-layout start
```

- b. Wait for the **fix-layout** command to complete. You can check the status for completion using the following command:


```
# gluster volume rebalance volname status
```

- c. Stop the volume using the following command:

```
# gluster volume stop volname
```

- d. Force start the volume using the following command:

```
# gluster volume start volname force
```

24. In case of an Object Store set-up, any configuration files that were edited should be renamed to end with a **.rpmsave** file extension, and other unedited files should be removed.
25. Re-configure the Object Store. For information on configuring Object Store, refer to *Section 18.5 in Chapter 18. Managing Object Store of the Red Hat Gluster Storage Administration Guide*.
26. Get the volume information and peer status of the created volume using the following commands:

```
# gluster volume info
# gluster peer status
```

Ensure that the output of these commands has the same values that they had before you started the upgrade.



Note

In Red Hat Gluster Storage 3.0, the **gluster peer status** output does not display the port number.

27. Verify the upgrade.
- a. If all servers in the trusted storage pool are not upgraded, the **gluster peer status** command displays the peers as disconnected or rejected.

The command displays the peer status information similar to the following:

```
# gluster peer status
Number of Peers: 3

Hostname: server2
Uuid: 2dde2c42-1616-4109-b782-dd37185702d8
State: Peer Rejected (Connected)

Hostname: server3
Uuid: 4224e2ac-8f72-4ef2-a01d-09ff46fb9414
State: Peer in Cluster (Connected)

Hostname: server4

Uuid: 10ae22d5-761c-4b2e-ad0c-7e6bd3f919dc
State: Peer Rejected (Disconnected)
```

- b. If all systems in the trusted storage pool are upgraded, the **gluster peer status** command displays peers as connected.

The command displays the peer status information similar to the following:

```
# gluster peer status
Number of Peers: 3

Hostname: server2
Uuid: 2dde2c42-1616-4109-b782-dd37185702d8
State: Peer in Cluster (Connected)

Hostname: server3
Uuid: 4224e2ac-8f72-4ef2-a01d-09ff46fb9414
State: Peer in Cluster (Connected)

Hostname: server4
Uuid: 10ae22d5-761c-4b2e-ad0c-7e6bd3f919dc
State: Peer in Cluster (Connected)
```

- c. If all the volumes in the trusted storage pool are started, the **gluster volume info** command displays the volume status as started.

```
Volume Name: volname
Type: Distributed-Replicate
Volume ID: d6274441-65bc-49f4-a705-fc180c96a072
Status: Started
Number of Bricks: 2 x 2 = 4
Transport-type: tcp
Bricks:
Brick1: server1:/rhs/brick1/brick1
Brick2: server2:/rhs/brick1/brick2
Brick3: server3:/rhs/brick1/brick3
Brick4: server4:/rhs/brick1/brick4
Options Reconfigured:
geo-replication.indexing: on
```

28. If you have a geo-replication setup, re-establish the geo-replication session between the master and slave using the following steps:

- a. Run the following commands on any one of the master nodes:

```
# cd /usr/share/glusterfs/scripts/
# sh generate-gfid-file.sh localhost:${master-vol} $PWD/get-
gfid.sh /tmp/tmp.atyEmKyCjo/upgrade-gfid-values.txt
# scp /tmp/tmp.atyEmKyCjo/upgrade-gfid-values.txt
root@${slavehost}:/tmp/
```

- b. Run the following commands on a slave node:

```
# cd /usr/share/glusterfs/scripts/
# sh slave-upgrade.sh localhost:${slave-vol}
/tmp/tmp.atyEmKyCjo/upgrade-gfid-values.txt $PWD/gsync-sync-gfid
```

**Note**

If the SSH connection for your setup requires a password, you will be prompted for a password for all machines where the bricks are residing.

- c. Re-create and start the geo-replication sessions.

For information on creating and starting geo-replication sessions, refer to *Managing Geo-replication* in the *Red Hat Gluster Storage Administration Guide*.

**Note**

It is recommended to add the child channel of Red Hat Enterprise Linux 6 containing the native client, so that you can refresh the clients and get access to all the new features in Red Hat Gluster Storage 3.1. For more information, refer to the *Upgrading Native Client* section in the *Red Hat Gluster Storage Administration Guide*.

29. Remount the volume to the client and verify for data consistency. If the gluster volume information and gluster peer status information matches with the information collected before migration, you have successfully upgraded your environment to Red Hat Gluster Storage 3.0.

9.2. In-Service Software Upgrade to Upgrade from Red Hat Gluster Storage 2.1.x to Red Hat Gluster Storage 3.1

In-service software upgrade refers to the ability to progressively update a Red Hat Gluster Storage Server cluster with a new version of the software without taking the volumes hosted on the cluster offline. In most cases normal I/O operations on the volume can continue even when the cluster is being updated under most circumstances. This method of updating the storage cluster is only supported for replicated and distributed-replicated volumes.

9.2.1. Pre-upgrade Tasks

Ensure you perform the following steps based on the set-up before proceeding with the in-service software upgrade process.

9.2.1.1. Upgrade Requirements for Red Hat Gluster Storage 3.1

The following are the upgrade requirements to upgrade to Red Hat Gluster Storage 3.1 from the latest preceding update:

- In-service software upgrade is supported only for nodes with replicate and distributed replicate volumes.
- If you want to use snapshots for your existing environment, each brick must be an independent thinly provisioned logical volume (LV). If you do not plan to use snapshots, thickly provisioned volumes remain supported.
- The Logical Volume which contains the brick must not be used for any other purpose.
- Only linear LVM is supported with Red Hat Gluster Storage 3.0. For more information, see https://access.redhat.com/site/documentation/en-US/Red_Hat_Enterprise_Linux/4/html-single/Cluster_Logical_Volume_Manager/#lv_overview

✦ Recommended Setup

In addition to the following list, you must ensure to read *Chapter 9 Configuring Red Hat Gluster Storage for Enhancing Performance* in the *Red Hat Gluster Storage 3.1 Administration Guide* for enhancing performance:

- For each brick, create a dedicated thin pool that contains the brick of the volume and its (thin) brick snapshots. With the current thinly provisioned volume design, avoid placing the bricks of different gluster volumes in the same thin pool.
 - The recommended thin pool chunk size is 256KB. There might be exceptions to this in cases where we have a detailed information of the customer's workload.
 - The recommended pool metadata size is 0.1% of the thin pool size for a chunk size of 1MB or larger. In special cases, where we recommend a chunk size less than 256KB, use a pool metadata size of 0.5% of thin pool size.
- ✦ When server-side quorum is enabled, ensure that bringing one node down does not violate server-side quorum. Add dummy peers to ensure the server-side quorum will not be violated until the completion of rolling upgrade using the following command:



Note

If you have a geo-replication session, then to add a node follow the steps mentioned in *Section 12.5.1 Starting Geo-replication for a New Brick or New Node* in the *Red Hat Gluster Storage 3.1 Administration Guide*.

```
# gluster peer probe DummyNodeName
```

For Example 1

When the server-side quorum percentage is set to the default value (>50%), for a plain replicate volume with two nodes and one brick on each machine, a dummy node which does not contain any bricks must be added to the trusted storage pool to provide high availability of the volume using the command mentioned above.

For Example 2

In a three node cluster, if the server-side quorum percentage is set to 77%, then bringing down one node would violate the server-side quorum. In this scenario, you have to add two dummy nodes to meet server-side quorum.

- ✦ If the client-side quorum is enabled then, run the following command to disable the client-side quorum:

```
# gluster volume reset <vol-name> cluster.quorum-type
```



Note

This is recommended for 2-way replicated volumes and not for 3-way replicated volumes. When the client-side quorum is disabled for a 3-way replicated volumes, there are chances that the files might go into split-brain.

- ✦ If there are any geo-replication sessions running between the master and slave, then stop this session by executing the following command:

```
# gluster volume geo-replication MASTER_VOL SLAVE_HOST::SLAVE_VOL stop
```

- ✦ Ensure the Red Hat Gluster Storage server is registered to the required channels:

```
rhel-x86_64-server-6
rhel-x86_64-server-6-rhs-3
rhel-x86_64-server-sfs-6
```

To subscribe to the channels, run the following command:

```
# rhn-channel --add --channel=<channel>
```

9.2.1.2. Restrictions for In-Service Software Upgrade

The following lists some of the restrictions for in-service software upgrade:

- ✦ Do not perform in-service software upgrade when the I/O or load is high on the Red Hat Gluster Storage server.
- ✦ Do not perform any volume operations on the Red Hat Gluster Storage server
- ✦ Do not change the hardware configurations.
- ✦ Do not run mixed versions of Red Hat Gluster Storage for an extended period of time. For example, do not have a mixed environment of Red Hat Gluster Storage 3.1 and Red Hat Gluster Storage 3.0 Update 4 for a prolonged time.
- ✦ Do not combine different upgrade methods.
- ✦ It is not recommended to use in-service software upgrade for migrating to thinly provisioned volumes, but to use offline upgrade scenario instead. For more information see, [Section 8.1, “Updating Red Hat Gluster Storage from 3.0.x to 3.1.x in the Offline Mode”](#)

9.2.1.3. Configuring repo for Upgrading using ISO

To configure the repo to upgrade using ISO, execute the following steps:



Note

Upgrading Red Hat Gluster Storage using ISO can be performed only from the previous release. This means that upgrading to Red Hat Gluster Storage 3.1 using ISO can only be done from Red Hat Gluster Storage 3.0 Update 4. For a complete list of supported Red Hat Gluster Storage releases, see [Section 1.5, “Supported Versions of Red Hat Gluster Storage”](#).

1. Mount the ISO image file under any directory using the following command:

```
mount -o loop <ISO image file> <mount-point>
```

For example:

```
mount -o loop RHSS-2.1U1-RC3-20131122.0-RHS-x86_64-DVD1.iso /mnt
```

- Set the repo options in a file in the following location:

```
/etc/yum.repos.d/<file_name.repo>
```

- Add the following information to the repo file:

```
[local]
name=local
baseurl=file:///mnt
enabled=1
gpgcheck=0
```

9.2.1.4. Preparing and Monitoring the Upgrade Activity

Before proceeding with the in-service software upgrade, prepare and monitor the following processes:

- Check the peer status using the following command:

```
# gluster peer status
```

For example:

```
# gluster peer status
Number of Peers: 2

Hostname: 10.70.42.237
Uuid: 04320de4-dc17-48ff-9ec1-557499120a43
State: Peer in Cluster (Connected)

Hostname: 10.70.43.148
Uuid: 58fc51ab-3ad9-41e1-bb6a-3efd4591c297
State: Peer in Cluster (Connected)
```

- Check the volume status using the following command:

```
# gluster volume status
```

For example:

```
# gluster volume status
Status of volume: r2

Gluster process                                Port      Online
Pid
-----
Brick 10.70.43.198:/brick/r2_0                   49152     Y
32259
Brick 10.70.42.237:/brick/r2_1                   49152     Y
25266
Brick 10.70.43.148:/brick/r2_2                   49154     Y
```

```

2857
Brick 10.70.43.198:/brick/r2_3                49153   Y
32270
NFS Server on localhost                    2049    Y
25280
Self-heal Daemon on localhost              N/A     Y
25284
NFS Server on 10.70.43.148                 2049    Y
2871
Self-heal Daemon on 10.70.43.148          N/A     Y
2875
NFS Server on 10.70.43.198                 2049    Y
32284
Self-heal Daemon on 10.70.43.198          N/A     Y
32288

```

```
Task Status of Volume r2
```

```
-----
-----
```

```
There are no active volume tasks
```

- ✧ Check the rebalance status using the following command:

```

# gluster volume rebalance r2 status
Node   Rebalanced-files  size      scanned  failures  skipped  status
run time in secs
-----  -----
-----  -----  -----  -----  -----  -----
10.70.43.198      0      0Bytes    99       0         0
completed      1.00
10.70.43.148     49     196Bytes  100      0         0
completed      3.00

```

- ✧ Ensure that there are no pending self-heals before proceeding with in-service software upgrade using the following command:

```
# gluster volume heal volname info
```

The following example shows a self-heal completion:

```

# gluster volume heal drvol info
Gathering list of entries to be healed on volume drvol has been successful

Brick 10.70.37.51:/rhs/brick1/dir1
Number of entries: 0

Brick 10.70.37.78:/rhs/brick1/dir1
Number of entries: 0

Brick 10.70.37.51:/rhs/brick2/dir2
Number of entries: 0

Brick 10.70.37.78:/rhs/brick2/dir2
Number of entries: 0

```

9.2.2. Upgrade Process with Service Impact

In-service software upgrade will impact the following services. Ensure you take the required precautionary measures.

SWIFT

ReST requests that are in transition will fail during in-service software upgrade. Hence it is recommended to stop all swift services before in-service software upgrade using the following commands:

```
# service openstack-swift-proxy stop
# service openstack-swift-account stop
# service openstack-swift-container stop
# service openstack-swift-object stop
```

NFS

When you NFS mount a volume, any new or outstanding file operations on that file system will hang uninterruptedly during in-service software upgrade until the server is upgraded.

Samba / CTDB

Ongoing I/O on Samba shares will fail as the Samba shares will be temporarily unavailable during the in-service software upgrade, hence it is recommended to stop the Samba service using the following command:

```
# service ctdb stop ;Stopping CTDB will also stop the SMB service.
```

Distribute Volume

In-service software upgrade is not supported for distributed volume. In case you have a distributed volume in the cluster, stop that volume using the following command:

```
# gluster volume stop <VOLNAME>
```

Start the volume after in-service software upgrade is complete using the following command:

```
# gluster volume start <VOLNAME>
```

Virtual Machine Store

The virtual machine images are likely to be modified constantly. The virtual machine listed in the output of the volume heal command does not imply that the self-heal of the virtual machine is incomplete. It could mean that the modifications on the virtual machine are happening constantly.

Hence, if you are using a gluster volume for storing virtual machine images (Red Hat Enterprise Linux, Red Hat Enterprise Virtualization and Red Hat OpenStack), then it is recommended to power-off all virtual machine instances before in-service software upgrade.

9.2.3. In-Service Software Upgrade

The following steps have to be performed on each node of the replica pair:

1. Back up the following configuration directory and files on the backup directory:


```
/var/lib/glusterd, /etc/swift, /etc/samba, /etc/ctdb, /etc/glusterfs,
/var/lib/samba, /var/lib/ctdb
```

```
# cp -a /var/lib/glusterd /backup-disk/
# cp -a /etc/swift /backup-disk/
# cp -a /etc/samba /backup-disk/
# cp -a /etc/ctdb /backup-disk/
# cp -a /etc/glusterfs /backup-disk/
# cp -a /var/lib/samba /backup-disk/
# cp -a /var/lib/ctdb /backup-disk/
```



Note

- ✦ If you have a CTDB environment, then to upgrade to Red Hat Gluster Storage 3.1, see [Section 9.2.4.1, “In-Service Software Upgrade for a CTDB Setup”](#).

2. Stop the gluster services on the storage server using the following commands:

```
# service glusterd stop
# pkill glusterfs
# pkill glusterfsd
```

3. To check the system's current subscription status run the following command:

```
# migrate-rhs-classic-to-rhsm --status
```



Note

The **migrate-rhs-classic-to-rhsm** command is only available in Red Hat Gluster Storage 2.1 Update 4 or higher. If your system doesn't have this command, ensure that you have updated the *redhat-storage-release* package to the latest version.

4. Execute the following command to migrate from Red Hat Network Classic to Red Hat Subscription Manager

```
# migrate-rhs-classic-to-rhsm --rhn-to-rhsm
```

5. To enable the Red Hat Gluster Storage 3.1 repos, execute the following command:

```
# migrate-rhs-classic-to-rhsm --upgrade --version 3
```

6. To verify if the migration from Red Hat Network Classic to Red Hat Subscription Manager is successful, execute the following command:

```
# migrate-rhs-classic-to-rhsm --status
```

7. Update the server using the following command:

```
# yum update
```

8. If the volumes are thickly provisioned, then perform the following steps to migrate to thinly provisioned volumes:



Note

Migrating from thickly provisioned volume to thinly provisioned volume during in-service software upgrade takes a significant amount of time based on the data you have in the bricks. You must migrate *only* if you plan on using snapshots for your existing environment and plan to be online during the upgrade. If you do not plan to use snapshots, you can skip the migration steps from LVM to thinp. However, if you plan to use snapshots on your existing environment, the offline method to upgrade is recommended. For more information regarding offline upgrade, see [Section 8.1, “Updating Red Hat Gluster Storage from 3.0.x to 3.1.x in the Offline Mode”](#)

Contact a Red Hat Support representative before migrating from thickly provisioned volumes to thinly provisioned volumes using in-service software upgrade.

- a. Unmount all the bricks associated with the volume by executing the following command:

```
# umount mount point
```

For example:

```
# umount /dev/RHS_vg/brick1
```

- b. Remove the LVM associated with the brick by executing the following command:

```
# lvremove logical_volume_name
```

For example:

```
# lvremove /dev/RHS_vg/brick1
```

- c. Remove the volume group by executing the following command:

```
# vgremove -ff volume_group_name
```

For example:

```
vgremove -ff RHS_vg
```

- d. Remove the physical volume by executing the following command:

```
# pvremove -ff physical_volume
```

- e. If the physical volume(PV) not created then create the PV for a RAID 6 volume by executing the following command, else proceed with the next step:

```
# pvcreate --dataalignment 2560K /dev/vdb
```

For more information refer *Section 12.1 Prerequisites* in the *Red Hat Gluster Storage 3 Administration Guide*

- f. Create a single volume group from the PV by executing the following command:

```
# vgcreate volume_group_name disk
```

For example:

```
vgcreate RHS_vg /dev/vdb
```

- g. Create a thinpool using the following command:

```
# lvcreate -L size --poolmetadatasize md size --chunksize chunk size -T pool device
```

For example:

```
lvcreate -L 2T --poolmetadatasize 16G --chunksize 256 -T /dev/RHS_vg/thin_pool
```

- h. Create a thin volume from the pool by executing the following command:

```
# lvcreate -V size -T pool device -n thinp
```

For example:

```
lvcreate -V 1.5T -T /dev/RHS_vg/thin_pool -n thin_vol
```

- i. Create filesystem in the new volume by executing the following command:

```
mkfs.xfs -i size=512 thin pool device
```

For example:

```
mkfs.xfs -i size=512 /dev/RHS_vg/thin_vol
```

The back-end is now converted to a thinly provisioned volume.

- j. Mount the thinly provisioned volume to the brick directory and setup the extended attributes on the bricks. For example:

```
# setfattr -n trusted.glusterfs.volume-id \ -v 0x$(grep volume-id /var/lib/glusterd/vols/volname/info \ | cut -d= -f2 | sed 's/-//g') $brick
```

9. To ensure Red Hat Gluster Storage Server node is healthy after reboot and so that it can then be joined back to the cluster, it is recommended that you disable glusterd during boot using the following command:

```
# chkconfig glusterd off
```

10. Reboot the server.
11. Perform the following operations to change the Automatic File Replication extended attributes so that the heal process happens from a brick in the replica subvolume to the thin provisioned brick.

- a. Create a FUSE mount point from any server to edit the extended attributes. Using the NFS and CIFS mount points, you will not be able to edit the extended attributes.

Note that `/mnt/r2` is the FUSE mount path.

- b. Create a new directory on the mount point and ensure that a directory with such a name is not already present.

```
# mkdir /mnt/r2/name-of-nonexistent-dir
```

- c. Delete the directory and set the extended attributes.

```
# rmdir /mnt/r2/name-of-nonexistent-dir
```

```
# setfattr -n trusted.non-existent-key -v abc /mnt/r2
# setfattr -x trusted.non-existent-key /mnt/r2
```

- d. Ensure that the extended attributes of the brick in the replica subvolume(In this example, **brick: /dev/RHS_vg/brick2** , extended attribute: `trusted.afr.r2-client-1`), is not set to zero.

```
# getfattr -d -m. -e hex /dev/RHS_vg/brick2 # file:
/dev/RHS_vg/brick2

security.selinux=0x756e636f6e66696e65645f753a6f626a6563745f723a6
6696c655f743a733000
    trusted.afr.r2-client-0=0x000000000000000000000000
    trusted.afr.r2-client-1=0x0000000000000000300000002
    trusted.gfid=0x00000000000000000000000000000001
    trusted.glusterfs.dht=0x00000001000000000000000007ffffffe
    trusted.glusterfs.volume-
id=0xde822e25ebd049ea83bfaa3c4be2b440
```

12. Start the **glusterd** service using the following command:

```
# service glusterd start
```

13. To automatically start the **glusterd** daemon every time the system boots, run the following command:

```
# chkconfig glusterd on
```

14. Start self-heal on the volume.

```
# gluster volume heal vol-name
```

15. To verify if you have upgraded to the latest version of the Red Hat Gluster Storage server execute the following command:

```
# gluster --version
```

16. Ensure that all the bricks are online. To check the status execute the following command:

```
# gluster volume status
```

For example:

```
# gluster volume status
Status of volume: r2

Gluster process                                     Port
Online Pid
-----
Brick 10.70.43.198:/brick/r2_0                      49152  Y
32259
Brick 10.70.42.237:/brick/r2_1                      49152  Y
25266
Brick 10.70.43.148:/brick/r2_2                      49154  Y
2857
Brick 10.70.43.198:/brick/r2_3                      49153  Y
32270
NFS Server on localhost                            2049   Y
25280
Self-heal Daemon on localhost                      N/A    Y
25284
NFS Server on 10.70.43.148                          2049   Y
2871
Self-heal Daemon on 10.70.43.148                    N/A    Y
2875
NFS Server on 10.70.43.198                          2049   Y
32284
Self-heal Daemon on 10.70.43.198                    N/A    Y
32288

Task Status of Volume r2
-----
There are no active volume tasks
```

17. Ensure self-heal is complete on the replica using the following command:

```
# gluster volume heal volname info
```

The following example shows self heal completion:

```
# gluster volume heal drvol info
Gathering list of entries to be healed on volume drvol has been
successful

Brick 10.70.37.51:/rhs/brick1/dir1
Number of entries: 0
```

```
Brick 10.70.37.78:/rhs/brick1/dir1
Number of entries: 0

Brick 10.70.37.51:/rhs/brick2/dir2
Number of entries: 0

Brick 10.70.37.78:/rhs/brick2/dir2
Number of entries: 0
```

18. Repeat the above steps on the other node of the replica pair.



Note

In the case of a distributed-replicate setup, repeat the above steps on all the replica pairs.

19. When all nodes have been upgraded, run the following command to update the **op-version** of the cluster. This helps to prevent any compatibility issues within the cluster.

```
# gluster volume set all cluster.op-version 30707
```



Note

If you want to enable Snapshot, see *Section 12.4. Troubleshooting* in the *Red Hat Gluster Storage 3 Administration Guide*.

20. If the client-side quorum was disabled before upgrade, then upgrade it by executing the following command:

```
# gluster volume set volname cluster.quorum-type auto
```

21. If a dummy node was created earlier, then detach it by executing the following command:

```
# gluster peer detach <dummy_node name>
```

22. If the geo-replication session between master and slave was disabled before upgrade, then configure the meta volume and restart the session::

```
# gluster volume set all cluster.enable-shared-storage enable
```

```
gluster volume geo-replication Volume1 example.com::slave-vol config
use_meta_volume true
```

```
# gluster volume geo-replication MASTER_VOL SLAVE_HOST::SLAVE_VOL
start
```

9.2.4. Special Consideration for In-Service Software Upgrade

The following sections describe the in-service software upgrade steps for a CTDB setup.

9.2.4.1. In-Service Software Upgrade for a CTDB Setup

Before you upgrade the CTDB packages, ensure you upgrade the Red Hat Gluster Storage server by following these steps. The following steps have to be performed on each node of the replica pair.

1. To ensure that the CTDB does not start automatically after a reboot run the following command on each node of the CTDB cluster:

```
# chkconfig ctdb off
```

2. Stop the CTDB service on the Red Hat Gluster Storage node using the following command on each node of the CTDB cluster:

```
# service ctdb stop
```

- a. To verify if the CTDB and SMB services are stopped, execute the following command:

```
ps axf | grep -E '(ctdb|smb|winbind|nmb)[d]'
```

3. Stop the gluster services on the storage server using the following commands:

```
# service glusterd stop
# pkill glusterfs
# pkill glusterfsd
```

4. In **/etc/fstab**, comment out the line containing the volume used for CTDB service as shown in the following example:

```
# HostName:/volname /gluster/lock glusterfs defaults,transport=tcp 0
0
```

5. Update the server using the following command:

```
# yum update
```

6. If SELinux support is required, then enable SELinux by following the steps mentioned in, [Chapter 11, Enabling SELinux](#)

7. After SELinux is enabled, set the following boolean:

For Samba

```
setsebool -P samba_load_libgfapi 1
```

For CTDB

```
setsebool -P use_fusefs_home_dirs 1
```

8. To ensure the **glusterd** service does not start automatically after reboot, execute the following command:

```
# chkconfig glusterd off
```

9. Reboot the server.

10. Update the META=all with the gluster volume information in the following scripts:

```
/var/lib/glusterd/hooks/1/start/post/S29CTDBsetup.sh
/var/lib/glusterd/hooks/1/stop/pre/S29CTDB-teardown.sh
```

11. In **/etc/fstab**, uncomment the line containing the volume used for CTDB service as shown in the following example:

```
HostName:/volname /gluster/lock glusterfs defaults,transport=tcp 0 0
```

12. To automatically start the **glusterd** daemon every time the system boots, run the following command:

```
# chkconfig glusterd on
```

13. To automatically start the ctdb daemon every time the system boots, run the following command:

```
# chkconfig ctdb on
```

14. Start the **glusterd** service using the following command:

```
# service glusterd start
```

15. Mount the CTDB volume by running the following command:

```
# mount -a
```

16. Start the CTDB service using the following command:

```
# service ctdb start
```

17. To verify if CTDB is running successfully, execute the following commands:

```
# ctdb status
# ctdb ip
# ctdb ping -n all
```

CTDB Upgrade

After upgrading the Red Hat Gluster Storage server, upgrade the CTDB package by executing the following steps:



Note

- ❖ Upgrading CTDB on all the nodes must be done simultaneously to avoid any data corruption.
- ❖ The following steps have to be performed only when upgrading CTDB from CTDB 1.x to CTDB 2.x.

1. Stop the CTDB service on all the nodes of the CTDB cluster by executing the following command. Ensure it is performed on all the nodes simultaneously as two different versions of CTDB cannot run at the same time in the CTDB cluster:

```
# service ctdb stop
```

2. Perform the following operations on all the nodes used as samba servers:

- Remove the following soft links:

```
/etc/sysconfig/ctdb
/etc/ctdb/nodes
/etc/ctdb/public_addresses
```

- Copy the following files from the CTDB volume to the corresponding location by executing the following command on each node of the CTDB cluster:

```
cp /gluster/lock/nodes /etc/ctdb/nodes
cp /gluster/lock/public_addresses /etc/ctdb/public_addresses
```

3. Stop and delete the CTDB volume by executing the following commands on one of the nodes of the CTDB cluster:

```
# gluster volume stop volname
```

```
# gluster volume delete volname
```

4. To remove the existing CTDB package execute the following command:

```
# yum remove ctdb
```

5. To install CTDB, execute the following command:

```
# yum install ctdb2.5
```

For more information about configuring CTDB on a Red Hat Gluster Storage server, see *Section 7.5.1 Setting Up CTDB* in the *Red Hat Gluster Storage 3.1 Administration Guide*

9.2.4.2. Verifying In-Service Software Upgrade

To verify if you have upgraded to the latest version of the Red Hat Gluster Storage server execute the following command:

```
# gluster --version
```

9.2.4.3. Upgrading the Native Client

All clients must use the same version of *glusterfs-fuse*. Red Hat strongly recommends that you upgrade servers before upgrading clients. For more information regarding installing and upgrading native client, see the *Red Hat Gluster Storage Administration Guide*: https://access.redhat.com/site/documentation/en-US/Red_Hat_Gluster/Storage/3.1/html-single/Administration_Guide/index.html#sect-Administration_Guide-GlusterFS_Client-GlusterFS_Client-Native

Chapter 10. Upgrading from Red Hat Gluster Storage 3.0 to Red Hat Gluster Storage 3.1 in a Red Hat Enterprise Virtualization-Red Hat Gluster Storage Environment

This section describes the upgrade methods for a Red Hat Gluster Storage and Red Hat Enterprise Virtualization integrated environment. You can upgrade Red Hat Gluster Storage 3.0 to Red Hat Gluster Storage 3.1 using an ISO or `yum`.

10.1. Upgrading using an ISO

- Using Red Hat Enterprise Virtualization Manager, stop all the virtual machine instances.
The Red Hat Gluster Storage volume on the instances will be stopped during the upgrade.
- Using Red Hat Enterprise Virtualization Manager, move the data domain of the data center to *Maintenance* mode.
- Using Red Hat Enterprise Virtualization Manager, stop the volume (the volume used for data domain) containing Red Hat Gluster Storage nodes in the data center.
- Using Red Hat Enterprise Virtualization Manager, move all Red Hat Gluster Storage nodes to *Maintenance* mode.
- Perform the ISO Upgrade as mentioned in [Section 9.1.3, “Upgrading from Red Hat Gluster Storage 2.1.x to Red Hat Gluster Storage 3.1 using an ISO”](#).

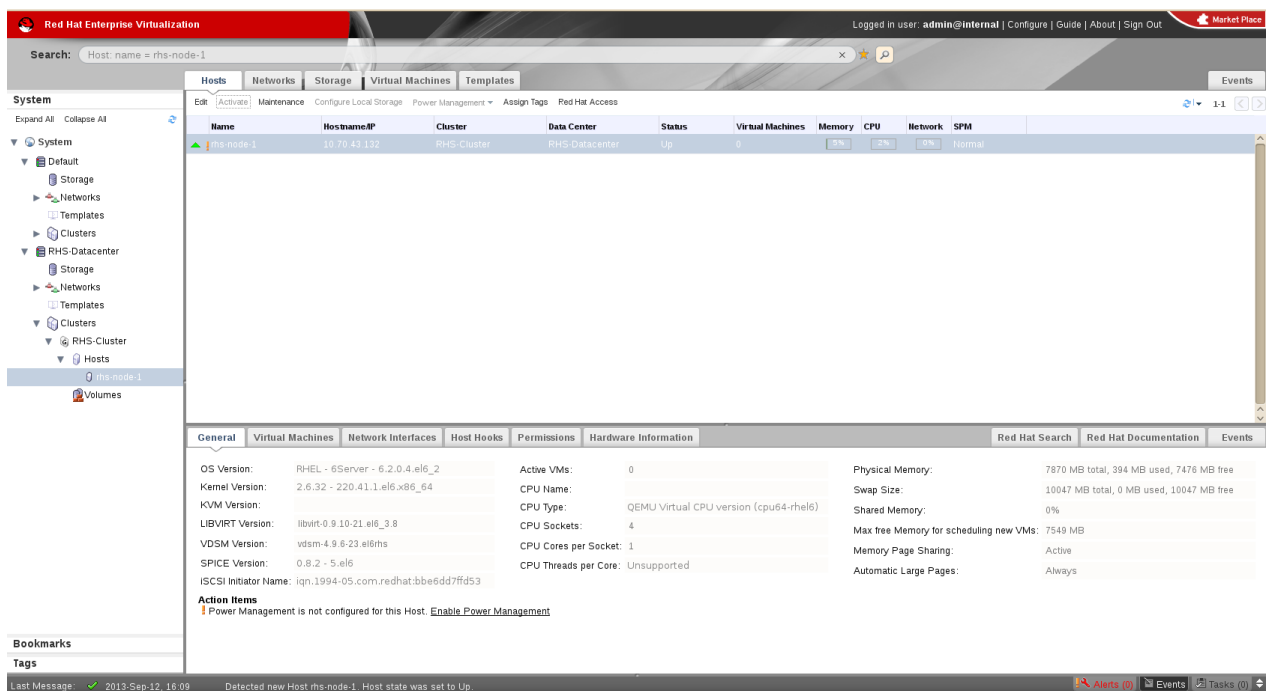


Figure 10.1. Red Hat Gluster Storage Node

- Re-install the Red Hat Gluster Storage nodes from Red Hat Enterprise Virtualization Manager.

Note

- Re-installation for the Red Hat Gluster Storage nodes should be done from Red Hat Enterprise Virtualization Manager. The newly upgraded Red Hat Gluster Storage 3.1 nodes lose their network configuration and other configurations, such as iptables configuration, done earlier while adding the nodes to Red Hat Enterprise Virtualization Manager. Re-install the Red Hat Gluster Storage nodes to have the bootstrapping done.
- You can re-configure the Red Hat Gluster Storage nodes using the option provided under **Action Items**, as shown in [Figure 10.2, “Red Hat Gluster Storage Node before Upgrade”](#), and perform bootstrapping.

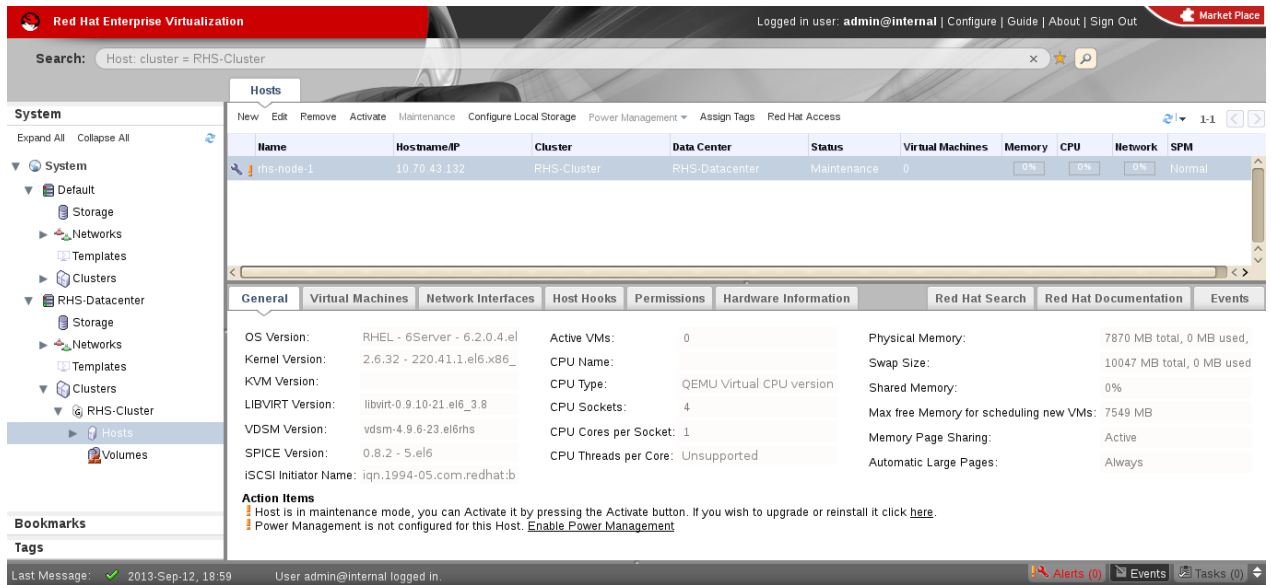


Figure 10.2. Red Hat Gluster Storage Node before Upgrade

- Perform the steps above in all Red Hat Gluster Storage nodes.
- Start the volume once all the nodes are shown in **Up** status in Red Hat Enterprise Virtualization Manager.
- Upgrade the native client bits for Red Hat Enterprise Linux 6 or Red Hat Enterprise Linux 7, based on the Red Hat Enterprise Linux server hypervisor used.

Note

If Red Hat Enterprise Virtualization Hypervisor is used as hypervisor, then install the suitable build of Red Hat Enterprise Virtualization Hypervisor containing the latest native client.

Figure 10.3. Red Hat Gluster Storage Node after Upgrade

- Using Red Hat Enterprise Virtualization Manager, activate the data domain and start all the virtual machine instances in the data center.

10.2. Upgrading using yum

- Using Red Hat Enterprise Virtualization Manager, stop all virtual machine instances in the data center.
- Using Red Hat Enterprise Virtualization Manager, move the data domain backed by gluster volume to *Maintenance* mode.
- Using Red Hat Enterprise Virtualization Manager, move all Red Hat Gluster Storage nodes to *Maintenance* mode.
- Perform **yum** update as mentioned in [Section 9.1.1, “Upgrading from Red Hat Gluster Storage 2.1.x to Red Hat Gluster Storage 3.1 for Systems Subscribed to Red Hat Network”](#).
- Once the Red Hat Gluster Storage nodes are rebooted and up, **Activate** them using Red Hat Enterprise Virtualization Manager.



Note

Re-installation of Red Hat Gluster Storage nodes is required, as the network configurations and bootstrapping configurations done prior to upgrade are preserved, unlike ISO upgrade.

- Using Red Hat Enterprise Virtualization Manager, start the volume.
- Upgrade the native client bits for Red Hat Enterprise Linux 6 or Red Hat Enterprise Linux 7, based on the Red Hat Enterprise Linux server hypervisor used.



Note

If Red Hat Enterprise Virtualization Hypervisor is used as hypervisor, reinstall Red Hat Enterprise Virtualization Hypervisor containing the latest version of Red Hat Gluster Storage native client.

8. Activate the data domain and start all the virtual machine instances.

Chapter 11. Enabling SELinux

After upgrading to Red Hat Gluster Storage 3.1, follow the steps mentioned here for SELinux support. These steps are not mandatory and are required only if SELinux support is required.

This procedure assumes that the `selinux-policy-targeted`, `selinux-policy`, `libselinux`, `libselinux-python`, `libselinux-utils`, `polycoreutils`, `polycoreutils-python`, `setroubleshoot`, `setroubleshoot-server`, `setroubleshoot-plugins` packages are installed. To verify that the packages are installed, use the following command:

```
# rpm -q package_name
```



Important

If the system was initially installed without SELinux, particularly the `selinux-policy` package, one additional step is necessary to enable SELinux. To make sure SELinux is initialized during system startup, the `dracut` utility has to be run to put SELinux awareness into the `initramfs` file system. Failing to do so causes SELinux to not start during system startup.

1. Before SELinux is enabled, each file on the file system must be labeled with an SELinux context. Before this happens, confined domains may be denied access, preventing your system from booting correctly. To prevent this, configure **SELINUX=permissive** in `/etc/selinux/config`:

```
# This file controls the state of SELinux on the system.
# SELINUX= can take one of these three values:
#     enforcing - SELinux security policy is enforced.
#     permissive - SELinux prints warnings instead of enforcing.
#     disabled - No SELinux policy is loaded.
SELINUX=permissive
# SELINUXTYPE= can take one of these two values:
#     targeted - Targeted processes are protected,
#     mls - Multi Level Security protection.
SELINUXTYPE=targeted
```

2. As the Linux root user, reboot the system. During the next boot, file systems are labeled. The label process labels each file with an SELinux context:

```
*** Warning -- SELinux targeted policy relabel is required.
*** Relabeling could take a very long time, depending on file
*** system size and speed of hard drives.
****
```

Each * (asterisk) character on the bottom line represents 1000 files that have been labeled. In the above example, four * characters represent 4000 files have been labeled. The time it takes to label all files depends on the number of files on the system and the speed of hard drives. On modern systems, this process can take as short as 10 minutes.

3. In permissive mode, the SELinux policy is not enforced, but denial messages are still logged for actions that would have been denied in enforcing mode. Before changing to enforcing mode, as the Linux root user, run the following command to confirm that SELinux did not deny actions during the last boot:

```
# grep "SELinux is preventing" /var/log/messages
```

If SELinux did not deny any actions during the last boot, this command returns no output.

4. If there were no denial messages in `/var/log/messages`, configure `SELINUX=enforcing` in `/etc/selinux/config`:

```
# This file controls the state of SELinux on the system.
# SELINUX= can take one of these three values:
#     enforcing - SELinux security policy is enforced.
#     permissive - SELinux prints warnings instead of enforcing.
#     disabled - No SELinux policy is loaded.
SELINUX=enforcing
# SELINUXTYPE= can take one of these two values:
#     targeted - Targeted processes are protected,
#     mls - Multi Level Security protection.
SELINUXTYPE=targeted
```

5. Reboot your system. After reboot, confirm that `getenforce` returns Enforcing

```
~]$ getenforce
Enforcing
```

For more information see, https://access.redhat.com/documentation/en-US/Red_Hat_Enterprise_Linux/6/html/Security-Enhanced_Linux/sect-Security-Enhanced_Linux-Working_with_SELinux-Changing_SELinux_Modes.html#sect-Security-Enhanced_Linux-Enabling_and_Disabling_SELinux-Enabling_SELinux

Chapter 12. Using the Gluster Command Line Interface

The Gluster command line interface (CLI) simplifies configuration and management of the storage environment. The Gluster CLI is similar to the LVM (Logical Volume Manager) CLI or the ZFS CLI, but operates across multiple storage servers. The Gluster CLI can be used when volumes are mounted (active) and not mounted (inactive). Red Hat Gluster Storage automatically synchronizes volume configuration information across all servers.

Use the Gluster CLI to create new volumes, start and stop existing volumes, add bricks to volumes, remove bricks from volumes, and change translator settings. Additionally, the Gluster CLI commands can create automation scripts and use the commands as an API to allow integration with third-party applications.



Note

Appending `--mode=script` to any CLI command ensures that the command executes without confirmation prompts.

Running the Gluster CLI

Run the Gluster CLI on any Red Hat Gluster Storage Server by either invoking the commands or running the Gluster CLI in interactive mode. The `gluster` command can be remotely used via SSH.

Run commands directly as follows, after replacing `COMMAND` with the required command:

```
# gluster peer COMMAND
```

The following is an example using the `status` command:

```
# gluster peer status
```

Gluster CLI Interactive Mode

Alternatively, run the Gluster CLI in interactive mode using the following command:

```
# gluster
```

If successful, the prompt changes to the following:

```
gluster>
```

When the prompt appears, execute gluster commands from the CLI prompt as follows:

```
gluster> COMMAND
```

As an example, replace the `COMMAND` with a command such as `status` to view the status of the peer server:

1. Start Gluster CLI's interactive mode:

```
# gluster
```


2. Request the peer server status:

```
gluster> status
```

3. The peer server status displays.

The following is another example, replacing the *COMMAND* with a command such as **help** to view the gluster help options.

1. Start Gluster CLI's interactive mode:

```
# gluster
```

2. Request the help options:

```
gluster> help
```

3. A list of gluster commands and options displays.

Appendix A. Revision History

Revision 3.1-30	Wed May 03 2016	Laura Bailey
Moving kernel version check to be more timely, BZ#1322657.		
Revision 3.1-26	Tue Mar 1 2016	Divya Muntimadugu
Version for RHGS 3.1 Update 2 release.		
Revision 3.1-24	Wed Feb 17 2016	Laura Bailey
Updated glusterfs package version for RHGS 3.1.2.		
Revision 3.1-23	Fri Jan 29 2016	Laura Bailey
Added notes about FUSE client compatibility and recommended repository use (BZ#1301058)		
Revision 3.1-22	Thu Jan 14 2016	Sandra Mcardo
BZ-1295034: Updated the command in Using Subscription Manager.		
Revision 3.1-21	Tue Dec 15 2015	Laura Bailey
Added version details table, BZ#1291527. Corrected reference to version details table, BZ#1256734. Added notes re. migration to thinly provisioned logical volumes, BZ#1259412.		
Revision 3.1-20	Tue Dec 08 2015	Laura Bailey
Clarified meaning of 'previous release' in upgrade chapter, BZ#1256734.		
Revision 3.1-19	Fri Nov 20 2015	Bhavana Mohan
Fixed Samba/CTDB related bugs		
Revision 3.1-18	Wed Nov 18 2015	Laura Bailey
Samba does not support in-service upgrades, BZ#1282603.		
Revision 3.1-17	Mon Nov 02 2015	Laura Bailey
Building for async docs update.		
Revision 3.1-16	Thu Oct 29 2015	Laura Bailey
Added reminder to update op-version after upgrading all cluster nodes (BZ#1272874) Clarified recommendation to move to thinly provisioned volumes (BZ#1260492) Clarified upgrade instructions, removed unnecessary subscription-manager-migration commands, added notes about required versions (BZ#1272455)		
Revision 3.1-7	Thu Oct 01 2015	Bhavana Mohan
Version for 3.1 Update 1 GA.		
Revision 3.1-6	Tue Aug 04 2015	Bhavana Mohan
Added installation steps for RHGS on RHEL 7.		
Revision 3.1-3	Tue July 28 2015	Ella Deon Ballard
Adding sort_order.		
Revision 3.1-1	Tue Jul 28 2015	Bhavana Mohan

Version for 3.1 GA.