



Red Hat JBoss Fuse 6.1

Tooling Installation Guide

Installing Red Hat JBoss Fuse ToolingRed Hat Fuse IDE

Red Hat JBoss Fuse 6.1 Tooling Installation Guide

Installing Red Hat JBoss Fuse ToolingRed Hat Fuse IDE

JBoss Fuse Tooling Docs Team

Content Services

fuse-docs-support@redhat.com

Legal Notice

Copyright © 2014 Red Hat.

The text of and illustrations in this document are licensed by Red Hat under a Creative Commons Attribution-Share Alike 3.0 Unported license ("CC-BY-SA"). An explanation of CC-BY-SA is available at

<http://creativecommons.org/licenses/by-sa/3.0/>

. In accordance with CC-BY-SA, if you distribute this document or an adaptation of it, you must provide the URL for the original version.

Red Hat, as the licensor of this document, waives the right to enforce, and agrees not to assert, Section 4d of CC-BY-SA to the fullest extent permitted by applicable law.

Red Hat, Red Hat Enterprise Linux, the Shadowman logo, JBoss, OpenShift, Fedora, the Infinity logo, and RHCE are trademarks of Red Hat, Inc., registered in the United States and other countries.

Linux ® is the registered trademark of Linus Torvalds in the United States and other countries.

Java ® is a registered trademark of Oracle and/or its affiliates.

XFS ® is a trademark of Silicon Graphics International Corp. or its subsidiaries in the United States and/or other countries.

MySQL ® is a registered trademark of MySQL AB in the United States, the European Union and other countries.

Node.js ® is an official trademark of Joyent. Red Hat Software Collections is not formally related to or endorsed by the official Joyent Node.js open source or commercial project.

The OpenStack ® Word Mark and OpenStack logo are either registered trademarks/service marks or trademarks/service marks of the OpenStack Foundation, in the United States and other countries and are used with the OpenStack Foundation's permission. We are not affiliated with, endorsed or sponsored by the OpenStack Foundation, or the OpenStack community.

All other trademarks are the property of their respective owners.

Abstract

Details of how to install Red Hat JBoss Fuse Tooling Red Hat JBoss Fuse IDE

Table of Contents

| | |
|---|-----------|
| CHAPTER 1. INSTALLATION REQUIREMENTS | 3 |
| SYSTEM REQUIREMENTS | 3 |
| INSTALLING RED HAT JBOSS DEVELOPER STUDIO | 3 |
| CHAPTER 2. INSTALLING THE RED HAT JBOSS FUSE TOOLING | 4 |
| 2.1. JBOSS CENTRAL INSTALL METHOD | 4 |
| 2.2. ECLIPSE INSTALL NEW SOFTWARE METHOD | 6 |
| CHAPTER 3. UPGRADING RED HAT JBOSS FUSE TOOLING | 8 |
| 3.1. JBOSS CENTRAL UPGRADE METHOD | 8 |
| 3.2. ECLIPSE UPGRADE METHOD | 9 |
| CHAPTER 4. UNINSTALLING RED HAT JBOSS FUSE TOOLING | 11 |
| APPENDIX A. RED HAT JBOSS FUSE MAVEN REPOSITORIES | 12 |

CHAPTER 1. INSTALLATION REQUIREMENTS

Abstract

Before attempting to install and use Red Hat JBoss Fuse Tooling , make sure your system meets the minimum requirements.

SYSTEM REQUIREMENTS

For Red Hat JBoss Developer Studio to function optimally, it must be installed on a tested and supported platform that is equipped with enough memory and hard disk space and running a compatible Java Developer Kit (JDK).

Please see the [JBoss Developer Studio Installation Guide](#) for detailed information on the system requirements.

INSTALLING RED HAT JBOSS DEVELOPER STUDIO

If you haven't already done so, you need to install Red Hat JBoss Developer Studio 7.x.

- To install the JBoss Developer Studio all-in-one distribution:
 1. Download and install one of the JBoss Developer Studio 7.x Universal Binary distributions from the [Red Hat Customer Portal](#) . These distributions come bundled and configured with everything you need, including Eclipse, to get started right away. The installer guides you through the installation process.



IMPORTANT

Do not install JBoss Developer Studio or the Java runtime you plan to use in a directory path that contains white space; for example, `C:\Program Files\Java\jre1.7\...` Doing so can result in unpredictable errors in the Red Hat JBoss Fuse Tooling at runtime.

2. Start up JBoss Developer Studio.
- To install JBoss Developer Studio into an existing Eclipse installation:
 1. Use the Eclipse Help → **Market Place...** mechanism to install JBoss Developer Studio.
 2. Select the **Red Hat JBoss Developer Studio (Kepler)** option, and click **Install**.
 3. Restart Eclipse once the installation has finished.



IMPORTANT

If you want to deploy your JBoss Fuse Tooling applications to Red Hat JBoss Fuse, you must download and install `jboss-fuse-6.1.0.redhat-<build#>` from the [Red Hat Customer Portal](#). For installation instructions, see the Red Hat JBoss Fuse Installation Guide, version 6.1, at [Red Hat JBoss Fuse documentation](#) .

CHAPTER 2. INSTALLING THE RED HAT JBOSS FUSE TOOLING

Abstract

You can install the JBoss Fuse Tooling through either JBoss Central or the standard Eclipse **Install New Software** mechanism.

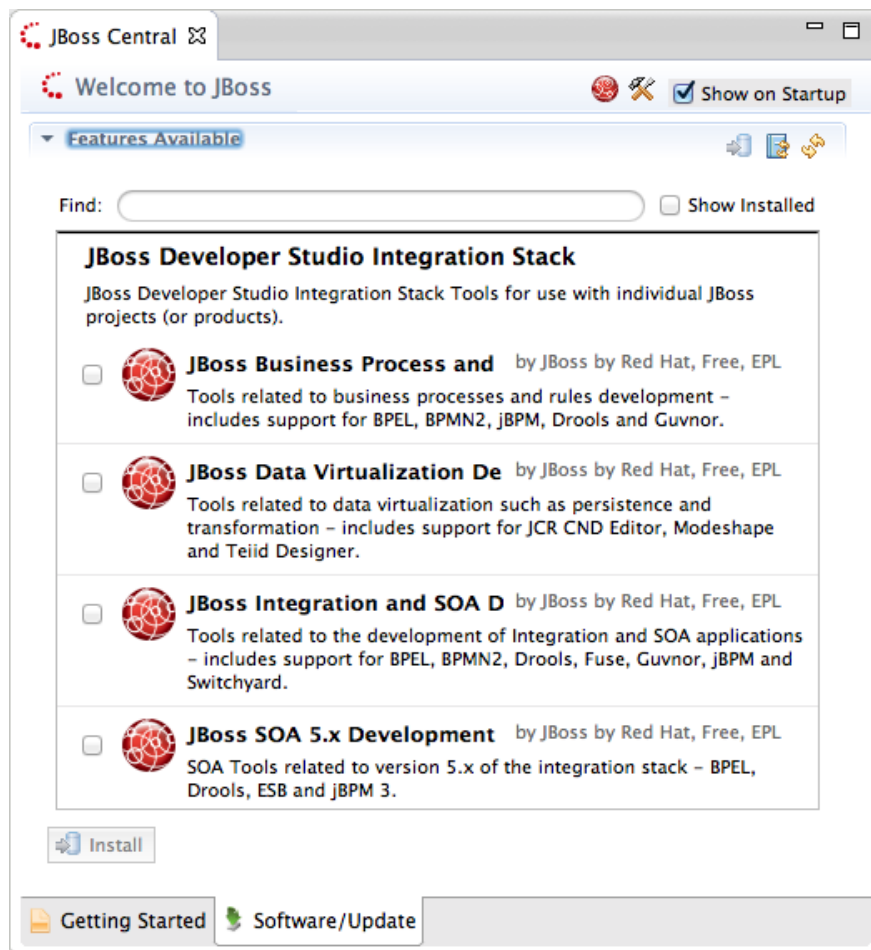
JBoss Fuse Tooling consists of three feature plugins that you can install individually, allowing you to install only the features you need.

- **JBoss Fuse Camel Editor Feature**—base building block for the other feature plugins; provides the tools for creating a Fuse project, including the route editor, the Enterprise Integration Patterns, and the logic for running camel contexts inside the editor.
- **JBoss Fuse Runtimes Feature**—adds functionality to debug and monitor routes and to deploy routes to both JMX-connected containers and Fabric containers.
- **JBoss Fuse Server Extension Feature**—adds functionality to configure, run, and interact with any of the supported servers from the Karaf command line inside the JBoss Fuse Tooling.

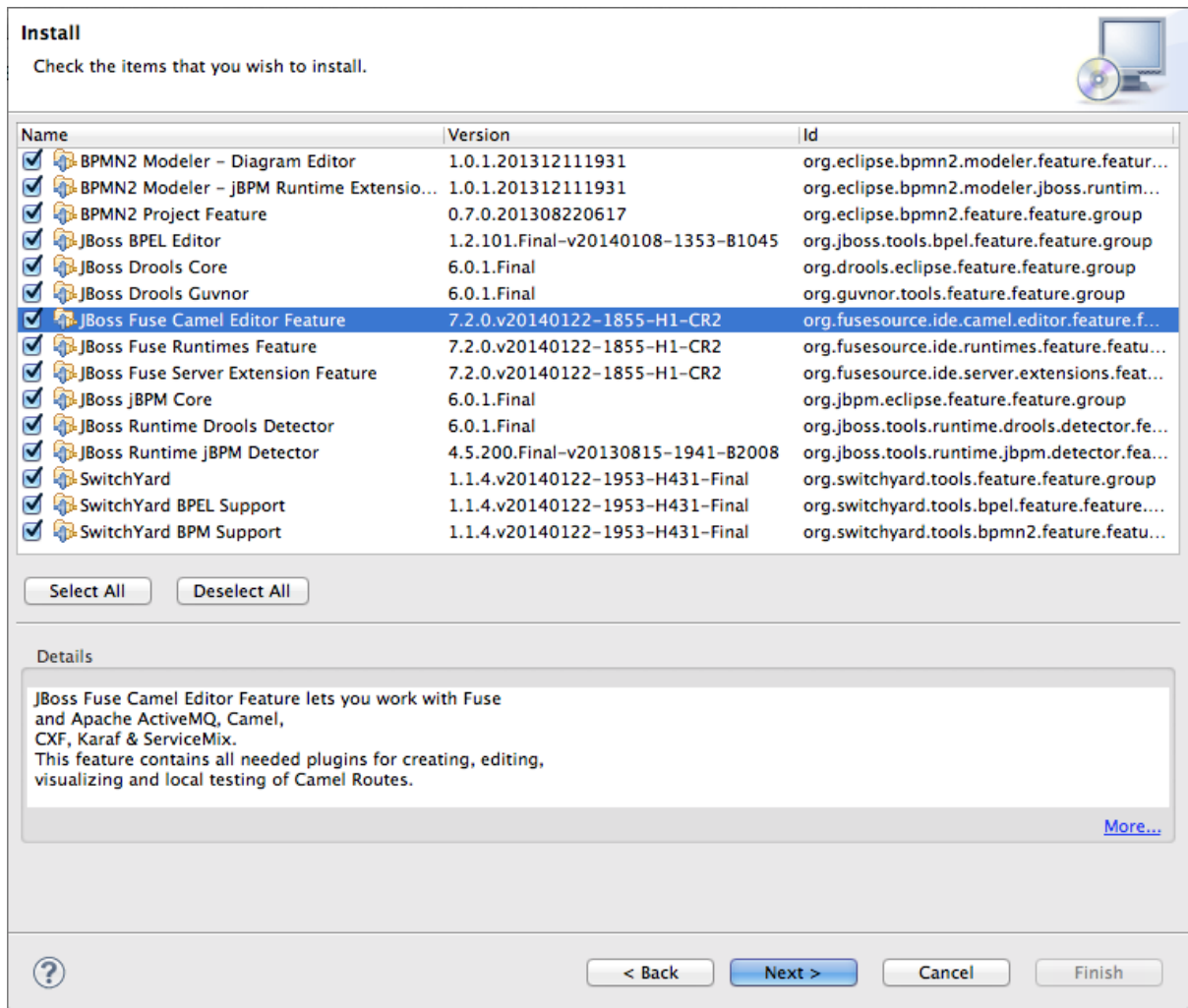
2.1. JBOSS CENTRAL INSTALL METHOD

With JBoss Developer Studio running JBoss perspective:

1. Click the **Software/Update** tab at the bottom of JBoss Central.
2. Find **JBoss Developer Studio Integration Stack** in the list of available features. It consists of four components listed directly beneath it.



3. Click the checkbox next to **JBoss Integration and SOA Development**. It contains the three feature plugins that make up the JBoss Fuse Tooling.
4. Click **Install**.
5. Select the **Fuse Tooling–JBoss Fuse Camel Editor Feature**, **JBoss Fuse Runtimes Feature**, **JBoss Fuse Server Extension Feature**– and other integration and SOA development options you want to install.



6. Click Next.

Wait while the installer checks for dependencies and hardware requirements.

7. In the **Install Details** window, review the items to be installed, and then click **Next**, if you are satisfied with your selection.

8. Accept the terms of the license agreement, and then click **Finish**.

9. If a **Security Warning** regarding unsigned content appears, disregard it and click **OK**.

10. When prompted to restart JBoss Developer Studio, click **Yes**.

When JBoss Developer Studio restarts, the Red Hat JBoss Fuse Tooling will be available.

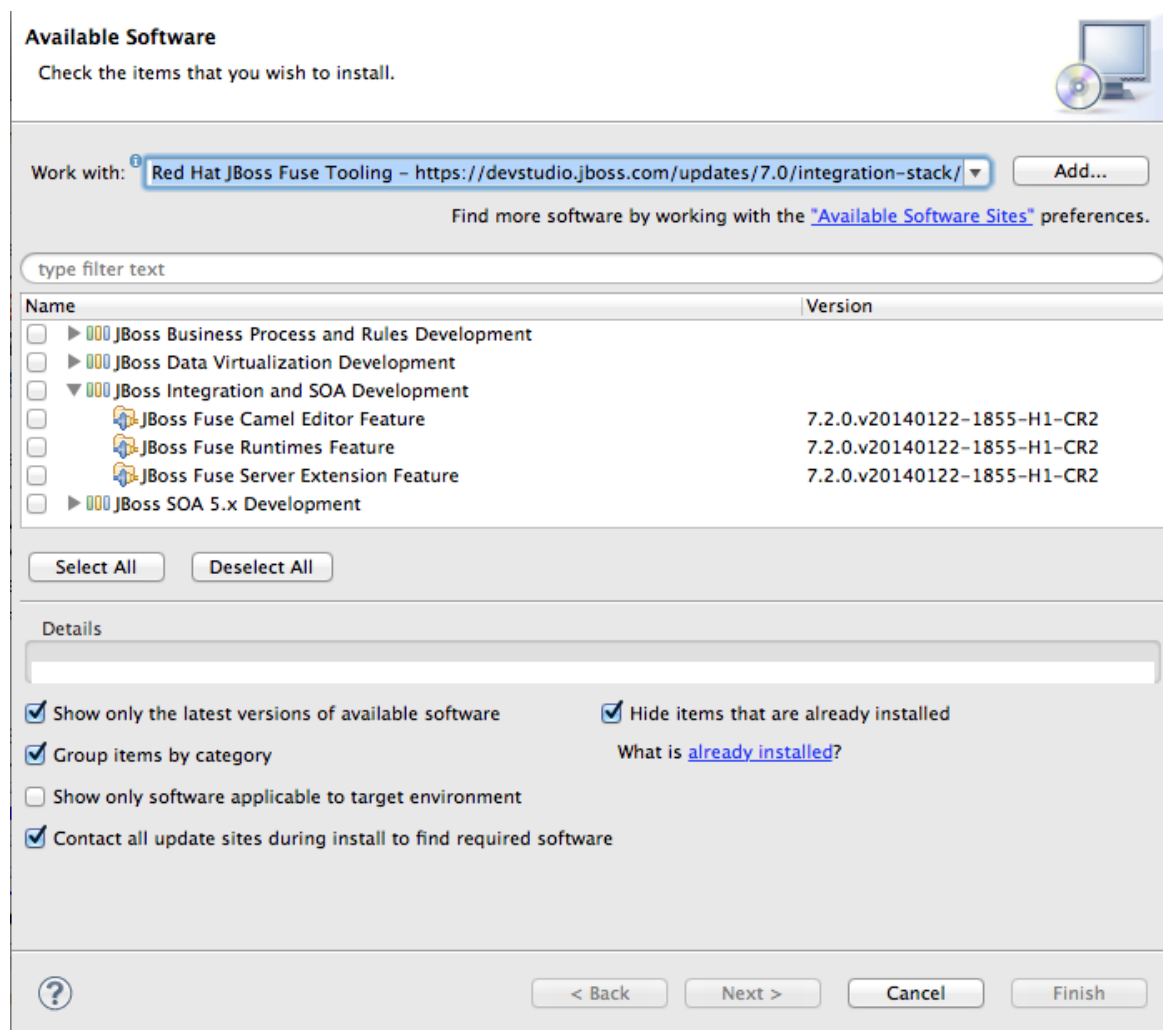
2.2. ECLIPSE INSTALL NEW SOFTWARE METHOD

With Eclipse running JBoss Developer Studio:

1. On the menu bar, click **Help** → **Install New Software ...** to open the **Install** wizard.
2. Click the **Add . . .** button next to the **Work with:** field to open the **Add Repository** window.
3. In **Name :**, enter a name for the repository; for example, **Red Hat JBoss Fuse Tooling**.

4. In **Location**: enter `https://devstudio.jboss.com/updates/7.0/integration-stack/`

The name and location you entered are combined and displayed in the **Work with:** field in the **Available Software** window:



5. In the list of available software, expand **JBoss Integration and SOA Development**.
6. Select the JBoss Fuse Tooling features you want to install (**JBoss Fuse Camel Editor Feature**, **JBoss Fuse Runtimes Feature**, **JBoss Fuse Server Extension Feature**) by clicking the checkbox next to each.
7. Click **Next**.

Wait while the installer checks for dependencies and hardware requirements.
8. In the **Install Details** window, review the items to be installed, and then click **Next**, if you are satisfied with your selection.
9. Accept the terms of the license agreement, and then click **Finish**.
10. If a **Security Warning** regarding unsigned content appears, disregard it and click **OK**.
11. When prompted to restart Eclipse, click **Yes**.

When Eclipse restarts, the new version of the Red Hat JBoss Fuse Tooling will be available.

CHAPTER 3. UPGRADING RED HAT JBOSS FUSE TOOLING

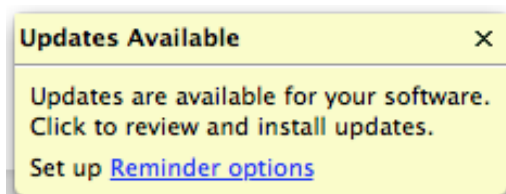
Abstract

You can upgrade the JBoss Fuse Tooling through either JBoss Central or the standard Eclipse **Check for Updates** mechanism.

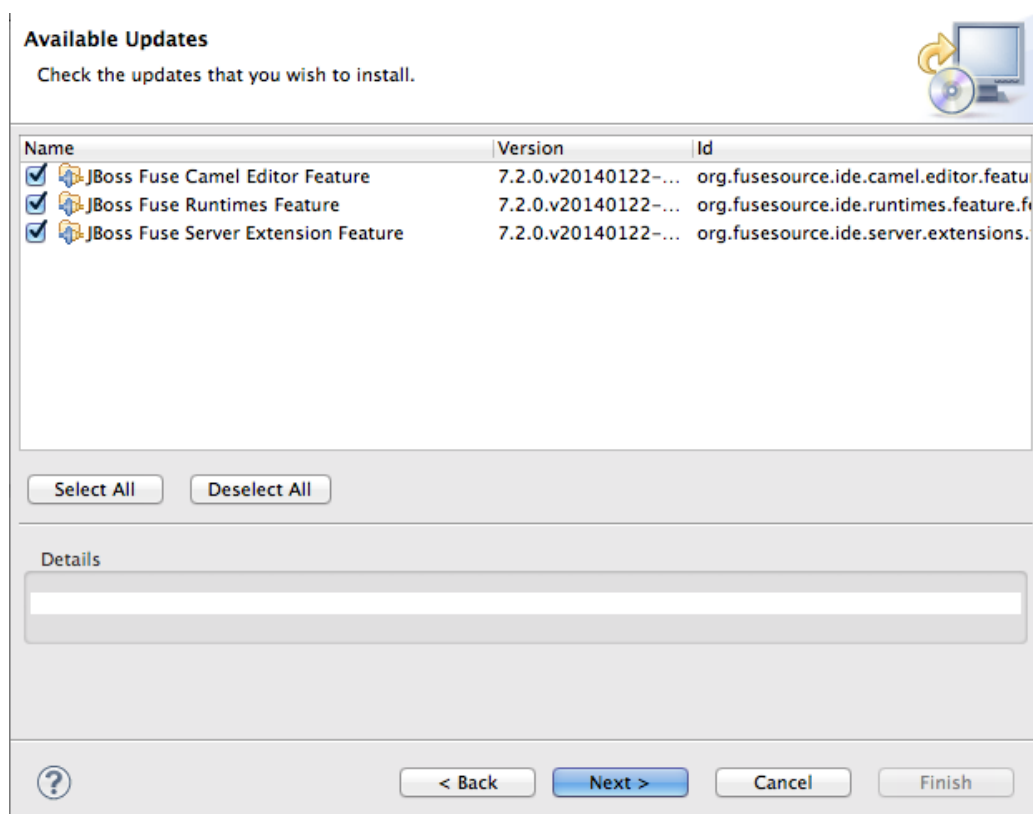
3.1. JBOSS CENTRAL UPGRADE METHOD

JBoss Central notifies you when it discovers that updates for installed software are available.

1. Click in the center of the **Updates Available** notification window.



2. Select the Fuse Tooling features (and other listed software, if any) you want to update.



3. Click **Next**.

Wait while the installer checks for dependencies and hardware requirements.

4. In the **Install Details** window, review the items to be updated, and then click **Next**, if you are satisfied with your selection.
5. Accept the terms of the license agreement, and then click **Finish**.

6. If a **Security Warning** regarding unsigned content appears, disregard it and click **OK**.
7. When prompted to restart JBoss Developer Studio, click **Yes**.

When JBoss Developer Studio restarts, the new version of the Red Hat JBoss Fuse Tooling will be available.

3.2. ECLIPSE UPGRADE METHOD



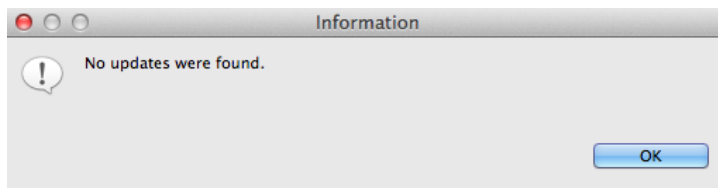
IMPORTANT

Eclipse searches for software updates only in the repositories that are included in its list of **Available Software Sites**. If you haven't already done so, you need to add the `https://devstudio.jboss.com/updates/7.0/integration-stack/` repository to the list.

With Eclipse running JBoss Developer Studio:

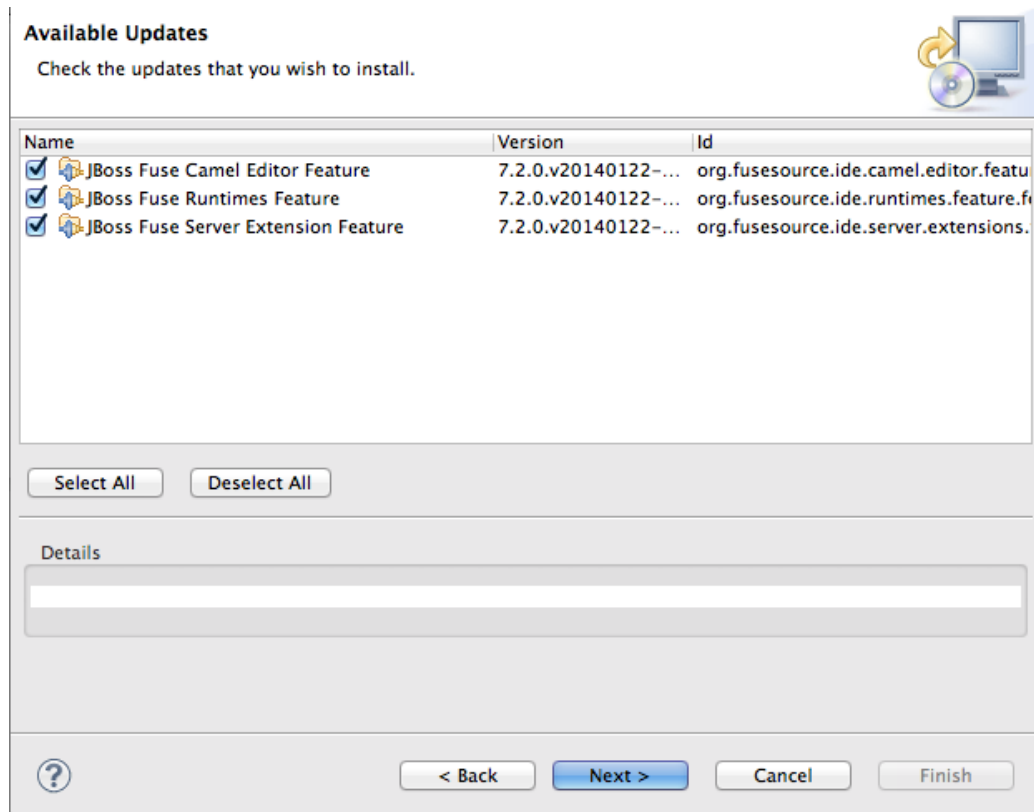
1. On the menu bar, click **Help** → **Check for Updates**.

You are notified when no updates are available:



When software updates are available, the **Available Updates** window opens showing all of the software for which there are updates.

2. Select the JBoss Fuse Tooling features (and other listed software, if any) you want to update.



3. Click **Next**.

Wait while the installer checks for dependencies and hardware requirements.

4. In the **Install Details** window, review the items to be updated, and then click **Next**, if you are satisfied with your selection.
5. Accept the terms of the license agreement, and then click **Finish**.
6. If a **Security Warning** regarding unsigned content appears, disregard it and click **OK**.
7. When prompted to restart Eclipse, click **Yes**.

When Eclipse restarts, the new version of the Red Hat JBoss Fuse Tooling will be available.

CHAPTER 4. UNINSTALLING RED HAT JBOSS FUSE TOOLING

Abstract

Red Hat JBoss Fuse Tooling is easy to uninstall. Just use the Eclipse uninstall mechanism accessed through **Help** (Linux and Windows) or **Red Hat JBoss Developer Studio** (Mac OSX) on the menu bar.



IMPORTANT

Uninstalling Red Hat JBoss Fuse Tooling does not remove your Fuse projects. To remove your Fuse projects, you must manually delete them. If you set up your Fuse projects to use a unique workspace folder, you can simply delete that folder. Otherwise, you need to delete each project individually.

To uninstall Red Hat JBoss Fuse Tooling:

1. On the menu bar, click
 - **Help** → **About JBoss Developer Studio** → **Installation Details** → **Installed Software**—on Linux and Windows platforms
 - **Red Hat JBoss Developer Studio** → **About JBoss Developer Studio** → **Installation Details** → **Installed Software**—on Mac OSX platforms
2. On the **Installed Software** tab, highlight the Fuse Tooling features—**JBoss Fuse Camel Editor Feature**, **JBoss Fuse Runtimes Feature**, **JBoss Fuse Server Extension Feature**—you want to uninstall, and then click **Uninstall**.
3. On the **Uninstall** window, review your selections and, if satisfied, click **Finish**. Otherwise click **Back** to revise your selection, or click **Cancel** to abort the uninstall.
4. When prompted, click **Yes** to restart Eclipse/Red Hat JBoss Developer Studio.

APPENDIX A. RED HAT JBOSS FUSE MAVEN REPOSITORIES

Abstract

Red Hat JBoss Fuse strongly supports Maven, an open source build system available from [Apache Maven](#). To use Maven to build your projects, you need to specify, in a Maven `settings.xml` file, where required artifacts are located.

For details on setting up Maven to work with Red Hat JBoss Fuse, see *Building with Maven in Red Hat JBoss Fuse Deploying into the Container* on the [Red Hat Customer Portal](#).

The following repositories contain artifacts your projects may need:

- JBoss Fuse repository

Provides access to the artifacts in the Red Hat JBoss Fuse Maven repository. This repository is required.

`https://repo.fusesource.com/nexus/content/groups/public/`

- JBoss Fuse Snapshots repository

Provides access to the artifacts in the Red Hat JBoss Fuse snapshot kit. This repository is not required, but it is useful if you want to experiment with building your project using different versions of the supplied archetypes.

`https://repo.fusesource.com/nexus/content/groups/public-snapshots/`

- Apache Public repository

Provides access to the artifacts in the Apache Maven repository. This repository is not required, but it is useful to include as Red Hat JBoss Fuse depends on various Apache artifacts.

`https://repository.apache.org/content/groups/public/`