



Red Hat Satellite 6.10

Deploying Red Hat Satellite on Amazon Web Services

Reference guide for deploying Red Hat Satellite Server and Capsules on Amazon Web Services

Red Hat Satellite 6.10 Deploying Red Hat Satellite on Amazon Web Services

Reference guide for deploying Red Hat Satellite Server and Capsules on Amazon Web Services

Red Hat Satellite Documentation Team
satellite-doc-list@redhat.com

Legal Notice

Copyright © 2021 Red Hat, Inc.

The text of and illustrations in this document are licensed by Red Hat under a Creative Commons Attribution–Share Alike 3.0 Unported license ("CC-BY-SA"). An explanation of CC-BY-SA is available at

<http://creativecommons.org/licenses/by-sa/3.0/>

. In accordance with CC-BY-SA, if you distribute this document or an adaptation of it, you must provide the URL for the original version.

Red Hat, as the licensor of this document, waives the right to enforce, and agrees not to assert, Section 4d of CC-BY-SA to the fullest extent permitted by applicable law.

Red Hat, Red Hat Enterprise Linux, the Shadowman logo, the Red Hat logo, JBoss, OpenShift, Fedora, the Infinity logo, and RHCE are trademarks of Red Hat, Inc., registered in the United States and other countries.

Linux[®] is the registered trademark of Linus Torvalds in the United States and other countries.

Java[®] is a registered trademark of Oracle and/or its affiliates.

XFS[®] is a trademark of Silicon Graphics International Corp. or its subsidiaries in the United States and/or other countries.

MySQL[®] is a registered trademark of MySQL AB in the United States, the European Union and other countries.

Node.js[®] is an official trademark of Joyent. Red Hat is not formally related to or endorsed by the official Joyent Node.js open source or commercial project.

The OpenStack[®] Word Mark and OpenStack logo are either registered trademarks/service marks or trademarks/service marks of the OpenStack Foundation, in the United States and other countries and are used with the OpenStack Foundation's permission. We are not affiliated with, endorsed or sponsored by the OpenStack Foundation, or the OpenStack community.

All other trademarks are the property of their respective owners.

Abstract

Use this guide to deploy Red Hat Satellite Server and Capsules on Amazon Web Services (AWS) Elastic Compute Cloud (Amazon EC2).

Table of Contents

CHAPTER 1. USE CASE CONSIDERATIONS	3
1.1. USE CASES KNOWN TO WORK	3
1.2. USE CASES THAT DO NOT WORK	3
CHAPTER 2. DEPLOYMENT SCENARIOS	5
CHAPTER 3. PREREQUISITES	8
3.1. AMAZON WEB SERVICE ASSUMPTIONS	8
3.2. RED HAT CLOUD PREREQUISITES	8
3.3. RED HAT SATELLITE-SPECIFIC PREREQUISITES	8
3.4. PREPARING FOR THE RED HAT SATELLITE INSTALLATION	9
CHAPTER 4. INSTALLING SATELLITE SERVER ON AWS	10
CHAPTER 5. INSTALLING CAPSULE ON AWS	11
CHAPTER 6. REGISTERING HOSTS TO SATELLITE USING THE BOOTSTRAP SCRIPT	12

CHAPTER 1. USE CASE CONSIDERATIONS

Because Amazon Web Services is an image-only service, there are common Satellite use cases that do not work, or require extra configuration in an Amazon Web Service environment. If you plan to use Satellite on AWS, ensure that the use case scenarios that you want to use are available in an AWS environment.

1.1. USE CASES KNOWN TO WORK

You can perform the following Red Hat Satellite use cases on AWS:

- [Subscription Management](#)
- [Content Management](#)
- [Errata Management](#)
- [Configuring Hosts](#)
- [Red Hat Insights](#)
- [Realm Integration via IdM](#)
- [OpenSCAP](#)
- [Remote Execution](#)

Subscriptions

Not all Red Hat subscriptions are eligible to run in public cloud environments. For more information about subscription eligibility, see the [Red Hat Cloud Access Page](#). You can create additional organizations and then import additional manifests to the organizations. For more information, see [Creating an Organization](#) in the *Content Management Guide*.

Multi-homed Satellite and Capsule

Multi-homed Satellite is not supported.

Multi-homed Capsule is supported, to implement this, you can configure Capsules with a load balancer. For more information, see [Configuring Capsules with a Load Balancer](#).

You must do this when Satellite Server or Capsule Server has different internal and external DNS host names and there is no site-to-site VPN connection between the locations where you deploy Satellite Server and Capsule Server.

On demand content sources

You can use the **On demand** download policy to reduce the storage footprint of the Red Hat Enterprise Linux server that runs Satellite. When you set the download policy to **On Demand**, content syncs to Satellite Server or Capsule Server when a content host requests it.

For more information, see [Importing Content](#) in the *Content Management Guide*.

1.2. USE CASES THAT DO NOT WORK

In AWS, you cannot manage the DHCP. Because of this, most of Satellite Server's kickstart and PXE provisioning models are unusable. This includes:

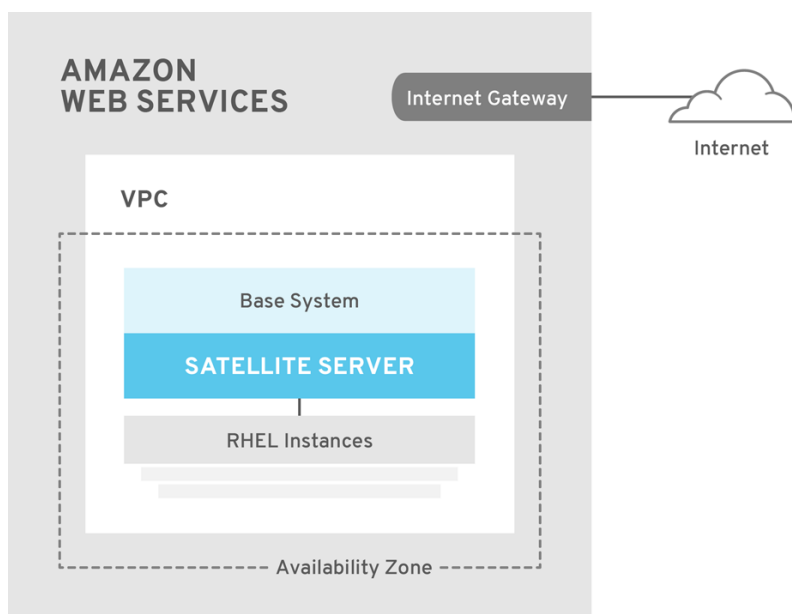
- PXE Provisioning
- Discovery and Discovery Rules
- ISO Provisioning methods.
 - PXE-Less Discovery (iPXE)
 - Per-host ISO
 - Generic ISO
 - Full-host ISO

CHAPTER 2. DEPLOYMENT SCENARIOS

There are three deployment scenarios for Red Hat Satellite in Amazon Web Services:

1. One region setup
2. Connecting on-premise and AWS region
3. Connecting different regions

Scenario 1: One region setup



SATELLITE_465517_0118

The least complex configuration of Satellite Server in Amazon Web Services consists of both Satellite Server and the content hosts residing within the same region and within the Virtual Private Cloud (VPC).

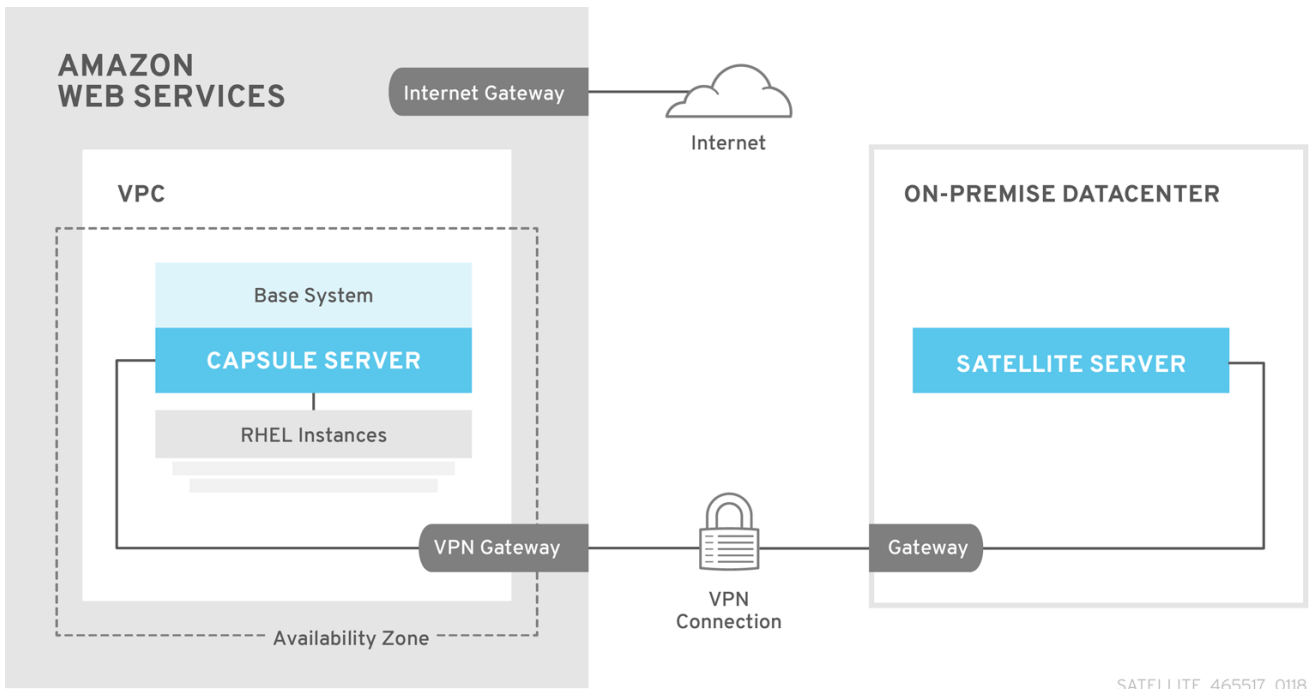
You can also use a different availability zone.

Scenario 2: Connecting on-premise and AWS region

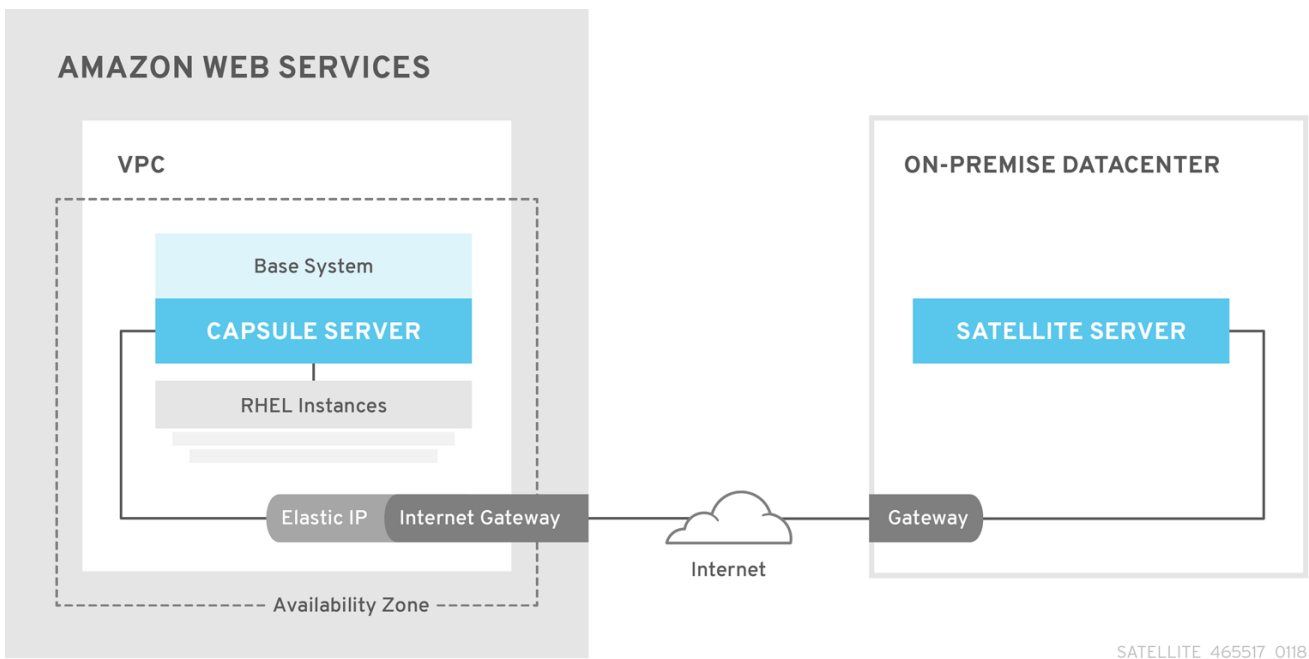
Create a VPN connection between the on-premise location and the AWS region where the Capsule resides.

It is also possible to use the external host name of Satellite Server when you register the instance which runs Capsule Server.

Option 1: Site-to-Site VPN connection between the AWS region and the On-Premise Datacenter



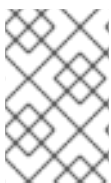
Option 2: Direct connection using the External DNS host name



Scenario 3: Connecting different regions

Create a site-to-site VPN connection between the different regions so that you can use the Internal DNS host name when you register the instance that runs Capsule Server to Satellite Server.

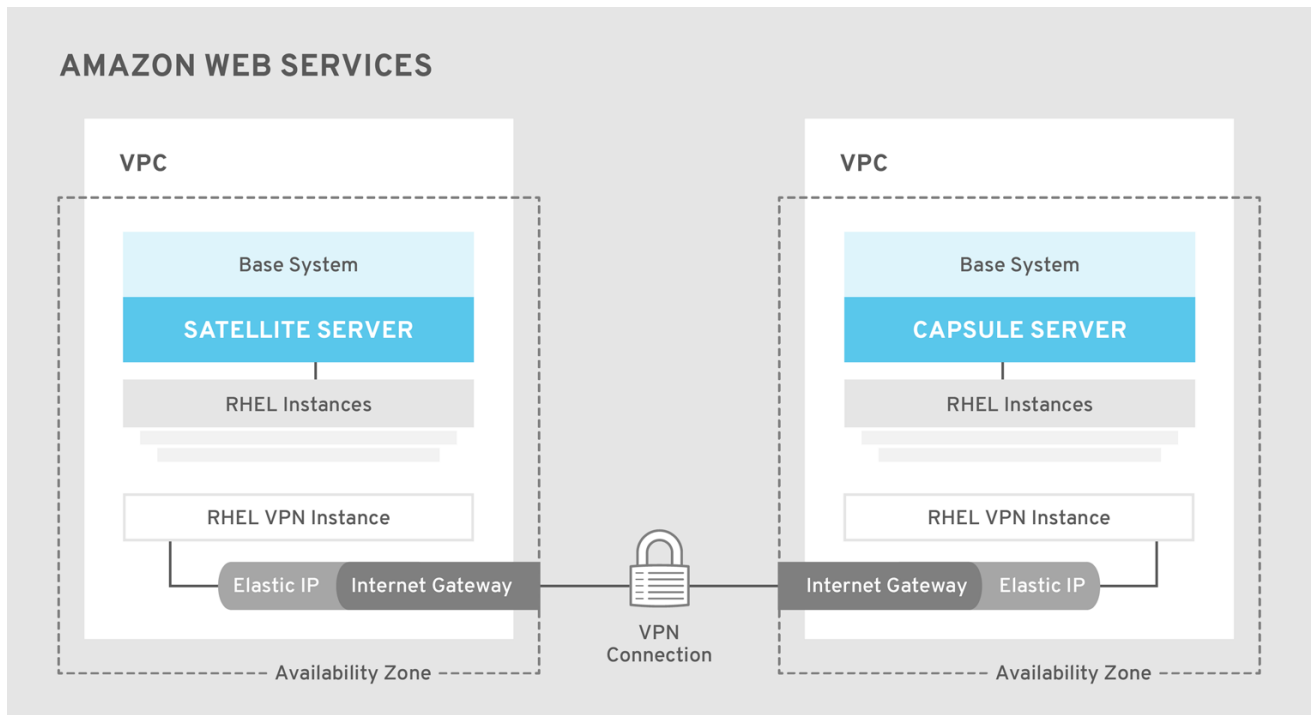
If you do not establish a site-to-site VPN connection, use the external DNS host name when you register the instance that runs Capsule Server to Satellite Server.



NOTE

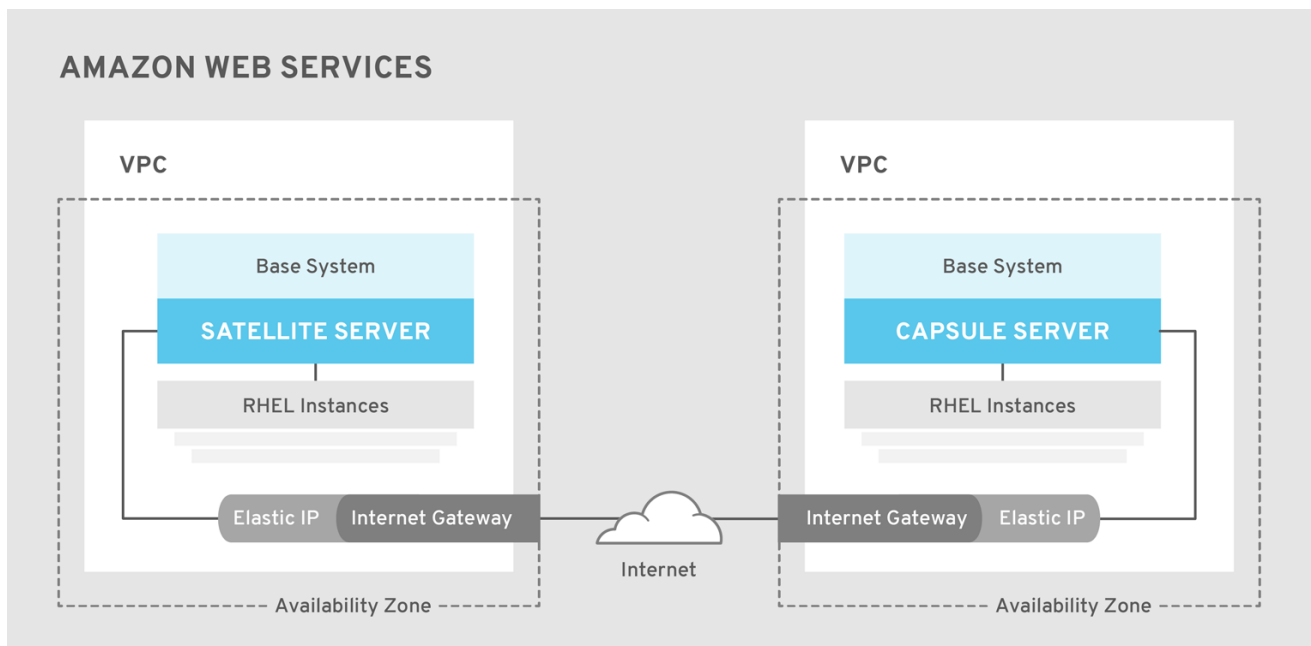
Most Public Cloud Providers do not charge for data being transferred into a region, or between availability zones within a single region; however, they do charge for data leaving the region to the Internet.

Option 1: Site-to-Site VPN connection between AWS regions



SATELLITE_465517_0118

Option 2: Direct connection using the External DNS host name



SATELLITE_465517_0118

CHAPTER 3. PREREQUISITES

Before you can install and register Red Hat Satellite and Capsule, you must set up accounts with Amazon Web Services (AWS) and create and start Red Hat Enterprise Linux instances on AWS.

3.1. AMAZON WEB SERVICE ASSUMPTIONS

To use this guide, you must have a working knowledge of the following aspects of Amazon Web Services:

- Creating and accessing Red Hat Enterprise Linux images in AWS
- Editing network access in AWS Security
- Creating EC2 instances and how to create EBS volumes
- Launching instances
- Importing and exporting virtual machines in AWS
- Using AWS Direct Connect

To install Satellite in an AWS environment, you must ensure that your AWS set up meets the [System Requirements](#) in *Installing Satellite Server from a Connected Network* .

To install Capsule in an AWS environment, you must ensure that your AWS set up meets the [System Requirements](#) in *Installing Capsule Server* .

For more information about Amazon Web Services and terminology, see [Amazon Elastic Compute Cloud Documentation](#).

For more information about Amazon Web Services Direct Connect, see [What is AWS Direct Connect?](#)

3.2. RED HAT CLOUD PREREQUISITES

To use this guide, you must complete the following steps:

- Register with Red Hat Cloud Access.
- Migrate any Red Hat subscriptions that you want to use.
- Create an AWS instance and deploy a Red Hat Enterprise Linux virtual machine to the instance.
- Ensure that your subscriptions are eligible for transfer to Red Hat Cloud. For more information, see [Red Hat Cloud Access Program Details](#) .

For more information about deploying Red Hat Enterprise Linux in AWS, see [How to Locate Red Hat Cloud Access Gold Images on AWS EC2](#).

3.3. RED HAT SATELLITE-SPECIFIC PREREQUISITES

- Ensure that the Amazon EC2 instance type meets or exceeds the [System Requirements](#) in *Installing Satellite Server from a Connected Network* . For the best performance, use an [AWS storage optimized instance](#).

- Use [Storage Requirements](#) in *Installing Satellite Server from a Connected Network* to understand and assign the correct storage to your AWS EBS volumes.
- Store the synced content on an EBS volume that is separate to the boot volume.
- Mount the synced content EBS volume separately in the operating system.
- Optional: store other data on a separate EBS volume.
- If you want Satellite Server and Capsule Server to communicate using external DNS hostnames, open the required ports for communication in the AWS Security Group that is associated with the instance.

3.4. PREPARING FOR THE RED HAT SATELLITE INSTALLATION

In your AWS environment, complete the following steps:

1. Launch an EC2 instance of a Red Hat Enterprise Linux AMI.
2. Connect to the newly created instance.
3. If you use a Red Hat Gold Image, remove the RHUI client and set the **enabled** parameter in the **product-id.conf** to **1**.

```
# yum remove -y rh-amazon-rhui-client*
# yum clean all
# cat << EOF > /etc/yum/pluginconf.d/product-id.conf
> [main]
> enabled=1
> EOF
```

CHAPTER 4. INSTALLING SATELLITE SERVER ON AWS

On your AWS environment, complete the following steps:

1. Connect to the new instance.
2. Use [Installing Satellite Server from a Connected Network](#) to install Satellite Server.

CHAPTER 5. INSTALLING CAPSULE ON AWS

On your AWS environment, complete the following steps:

1. Connect to the new instance.
2. Install Capsule Server. For more information, see [Installing Capsule Server](#).

CHAPTER 6. REGISTERING HOSTS TO SATELLITE USING THE BOOTSTRAP SCRIPT

When you install Satellite Server and Capsule Server, you must then register the content hosts on EC2 instances to Satellite with the bootstrap script.

For more information about using the bootstrap script, see [Registering Hosts to Red Hat Satellite Using The Bootstrap Script](#) in the *Managing Hosts* guide.