



Red Hat Hyperconverged Infrastructure for Virtualization 1.7

Deploying Red Hat Hyperconverged Infrastructure for Virtualization on a single node

Create a hyperconverged configuration with a single server

Red Hat Hyperconverged Infrastructure for Virtualization 1.7 Deploying Red Hat Hyperconverged Infrastructure for Virtualization on a single node

Create a hyperconverged configuration with a single server

Laura Bailey

lbailey@redhat.com

Legal Notice

Copyright © 2021 Red Hat, Inc.

The text of and illustrations in this document are licensed by Red Hat under a Creative Commons Attribution–Share Alike 3.0 Unported license ("CC-BY-SA"). An explanation of CC-BY-SA is available at

<http://creativecommons.org/licenses/by-sa/3.0/>

. In accordance with CC-BY-SA, if you distribute this document or an adaptation of it, you must provide the URL for the original version.

Red Hat, as the licensor of this document, waives the right to enforce, and agrees not to assert, Section 4d of CC-BY-SA to the fullest extent permitted by applicable law.

Red Hat, Red Hat Enterprise Linux, the Shadowman logo, the Red Hat logo, JBoss, OpenShift, Fedora, the Infinity logo, and RHCE are trademarks of Red Hat, Inc., registered in the United States and other countries.

Linux[®] is the registered trademark of Linus Torvalds in the United States and other countries.

Java[®] is a registered trademark of Oracle and/or its affiliates.

XFS[®] is a trademark of Silicon Graphics International Corp. or its subsidiaries in the United States and/or other countries.

MySQL[®] is a registered trademark of MySQL AB in the United States, the European Union and other countries.

Node.js[®] is an official trademark of Joyent. Red Hat is not formally related to or endorsed by the official Joyent Node.js open source or commercial project.

The OpenStack[®] Word Mark and OpenStack logo are either registered trademarks/service marks or trademarks/service marks of the OpenStack Foundation, in the United States and other countries and are used with the OpenStack Foundation's permission. We are not affiliated with, endorsed or sponsored by the OpenStack Foundation, or the OpenStack community.

All other trademarks are the property of their respective owners.

Abstract

Read this for information about deploying a single self-contained Red Hat Hyperconverged Infrastructure for Virtualization server.

Table of Contents

MAKING OPEN SOURCE MORE INCLUSIVE	3
CHAPTER 1. WORKFLOW FOR DEPLOYING A SINGLE HYPERCONVERGED HOST	4
CHAPTER 2. ADDITIONAL REQUIREMENTS FOR SINGLE NODE DEPLOYMENTS	5
CHAPTER 3. INSTALL HOST PHYSICAL MACHINE	6
3.1. INSTALLING RED HAT VIRTUALIZATION HOST	6
3.2. ENABLING SOFTWARE REPOSITORIES	8
CHAPTER 4. CONFIGURE KEY BASED SSH AUTHENTICATION WITHOUT A PASSWORD	9
4.1. GENERATING SSH KEY PAIRS WITHOUT A PASSWORD	9
4.2. COPYING SSH KEYS	10
CHAPTER 5. CONFIGURING A SINGLE NODE RHHI FOR VIRTUALIZATION DEPLOYMENT	11
5.1. CONFIGURING RED HAT GLUSTER STORAGE ON A SINGLE NODE	11
5.2. DEPLOY THE HOSTED ENGINE ON A SINGLE NODE USING THE WEB CONSOLE	16
CHAPTER 6. CONFIGURE RED HAT GLUSTER STORAGE AS A RED HAT VIRTUALIZATION STORAGE DOMAIN	27
CHAPTER 7. VERIFY YOUR DEPLOYMENT	28
CHAPTER 8. POST-DEPLOYMENT CONFIGURATION SUGGESTIONS	31
8.1. CONFIGURE NOTIFICATIONS	31
8.2. CONFIGURE FENCING FOR HIGH AVAILABILITY	31
8.3. CONFIGURE BACKUP AND RECOVERY OPTIONS	31
CHAPTER 9. NEXT STEPS	32
PART I. REFERENCE MATERIAL	33
APPENDIX A. GLOSSARY OF TERMS	34
A.1. VIRTUALIZATION TERMS	34
A.2. STORAGE TERMS	34
A.3. HYPERCONVERGED INFRASTRUCTURE TERMS	35

MAKING OPEN SOURCE MORE INCLUSIVE

Red Hat is committed to replacing problematic language in our code, documentation, and web properties. We are beginning with these four terms: master, slave, blacklist, and whitelist. Because of the enormity of this endeavor, these changes will be implemented gradually over several upcoming releases. For more details, see [our CTO Chris Wright's message](#).

CHAPTER 1. WORKFLOW FOR DEPLOYING A SINGLE HYPERCONVERGED HOST

1. Verify that your planned deployment meets [Support Requirements](#), with exceptions described in [Chapter 2, Additional requirements for single node deployments](#).
2. [Install the hyperconverged host machine](#).
3. [Configure key-based SSH without a password](#) from the node to itself.
4. Browse to the Web Console and [deploy a single hyperconverged node](#).
5. Browse to the Red Hat Virtualization Administration Console and [configure Red Hat Gluster Storage as a Red Hat Virtualization storage domain](#).

CHAPTER 2. ADDITIONAL REQUIREMENTS FOR SINGLE NODE DEPLOYMENTS

Red Hat Hyperconverged Infrastructure for Virtualization is supported for deployment on a single node provided that all [Support Requirements](#) are met, with the following additions and exceptions.

A single node deployment requires a physical machine with:

- 1 Network Interface Controller
- at least 12 cores
- at least 64GB RAM
- at most 48TB storage

Single node deployments cannot be scaled, and are not highly available.

CHAPTER 3. INSTALL HOST PHYSICAL MACHINE

Your physical machine needs an operating system and access to the appropriate software repositories in order to be used as a hyperconverged host.

3.1. INSTALLING RED HAT VIRTUALIZATION HOST

Red Hat Virtualization Host is a minimal operating system designed for setting up a physical machine that acts as a hypervisor in Red Hat Virtualization, or a hyperconverged host in Red Hat Hyperconverged Infrastructure.

Prerequisites

- Ensure that your physical machine meets the requirements outlined in [Physical machines](#).

Procedure

1. Download the Red Hat Virtualization Host ISO image from the Customer Portal:
 - a. Log in to the Customer Portal at <https://access.redhat.com>.
 - b. Click **Downloads** in the menu bar.
 - c. Click **Red Hat Virtualization**. Scroll up and click **Download Latest** to access the product download page.
 - d. Go to *Hypervisor Image for RHV 4.3* and click **Download Now**.
 - e. Create a bootable media device. See [Making Media](#) in the *Red Hat Enterprise Linux Installation Guide* for more information.
2. Start the machine on which you are installing Red Hat Virtualization Host, and boot from the prepared installation media.
3. From the boot menu, select **Install RHVH 4.3** and press **Enter**.



NOTE

You can also press the Tab key to edit the kernel parameters. Kernel parameters must be separated by a space, and you can boot the system using the specified kernel parameters by pressing the Enter key. Press the Esc key to clear any changes to the kernel parameters and return to the boot menu.

4. Select a language, and click **Continue**.
5. Select a time zone from the *Date & Time* screen and click **Done**.

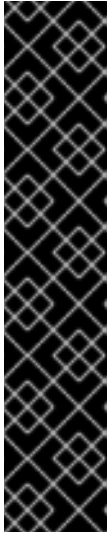


IMPORTANT

Red Hat recommends using Coordinated Universal Time (UTC) on all hosts. This helps ensure that data collection and connectivity are not impacted by variation in local time, such as during daylight savings time.

6. Select a keyboard layout from the *Keyboard* screen and click **Done**.

7. Specify the installation location from the *Installation Destination* screen.



IMPORTANT

- Red Hat strongly recommends using the **Automatically configure partitioning** option.
- All disks are selected by default, so deselect disks that you do not want to use as installation locations.
- At-rest encryption is not supported. Do not enable encryption.
- Red Hat recommends increasing the size of **/var/log** to at least 15GB to provide sufficient space for the additional logging requirements of Red Hat Gluster Storage.
Follow the instructions in [Growing a logical volume using the Web Console](#) to increase the size of this partition after installing the operating system.

Click **Done**.

8. Select the Ethernet network from the *Network & Host Name* screen.
 - a. Click **Configure...** → **General** and select the **Automatically connect to this network when it is available** check box.
9. Optionally configure **Language Support**, **Security Policy**, and **Kdump**. See [Installing Using Anaconda](#) in the *Red Hat Enterprise Linux 7 Installation Guide* for more information on each of the sections in the *Installation Summary* screen.
10. Click **Begin Installation**.
11. Set a root password and, optionally, create an additional user while Red Hat Virtualization Host installs.



WARNING

Red Hat strongly recommends not creating untrusted users on Red Hat Virtualization Host, as this can lead to exploitation of local security vulnerabilities.

12. Click **Reboot** to complete the installation.



NOTE

When Red Hat Virtualization Host restarts, **nodectl check** performs a health check on the host and displays the result when you log in on the command line. The message **node status: OK** or **node status: DEGRADED** indicates the health status. Run **nodectl check** to get more information. The service is enabled by default.

3.2. ENABLING SOFTWARE REPOSITORIES

1. Log in to the Web Console.
Use the management FQDN and port **9090**, for example, **<https://server1.example.com:9090/>**.
2. Navigate to **Subscriptions**, click **Register System**, and enter your Customer Portal user name and password.
The **Red Hat Virtualization Host** subscription is automatically attached to the system.
3. Click **Terminal**.
4. Enable the **Red Hat Virtualization Host 7** repository to allow later updates to the Red Hat Virtualization Host:

```
# subscription-manager repos --enable=rhel-7-server-rhvh-4-rpms
```

CHAPTER 4. CONFIGURE KEY BASED SSH AUTHENTICATION WITHOUT A PASSWORD

Configure key-based SSH authentication without a password for the root user from the host, to the FQDNs of both storage and management interfaces on the same host.

4.1. GENERATING SSH KEY PAIRS WITHOUT A PASSWORD

Generating a public/private key pair lets you use key-based SSH authentication. Generating a key pair that does not use a password makes it simpler to use Ansible to automate deployment and configuration processes.

Procedure

1. Log in to the first hyperconverged host as the root user.
2. Generate an SSH key that does not use a password.
 - a. Start the key generation process.

```
# ssh-keygen -t rsa
Generating public/private rsa key pair.
```

- b. Enter a location for the key.

The default location, shown in parentheses, is used if no other input is provided.

```
Enter file in which to save the key (/home/username/.ssh/id_rsa): <location>/<keyname>
```

- c. Specify and confirm an empty passphrase by pressing **Enter** twice.

```
Enter passphrase (empty for no passphrase):
Enter same passphrase again:
```

The private key is saved in **<location>/<keyname>**. The public key is saved in **<location>/<keyname>.pub**.

```
Your identification has been saved in <location>/<keyname>.
Your public key has been saved in <location>/<keyname>.pub.
The key fingerprint is SHA256:8BhZageKrLXM99z5f/AM9aPo/KAUd8ZZFPcPFWqK6+M
root@server1.example.com
The key's randomart image is:
+----[ECDSA 256]----+
|    ..    +=|
| ... =   0.0|
| +. * .  0...|
| = . . * . + +..|
|. + ... So o * ..|
| . o . . + = ..|
|   o oo ..=. .|
|   ooo...+ |
|   .E++oo |
+-----[SHA256]-----+
```

**WARNING**

Your identification in this output is your private key. Never share your private key. Possession of your private key allows someone else to impersonate you on any system that has your public key.

4.2. COPYING SSH KEYS

To access a host using your private key, that host needs a copy of your public key.

Prerequisites

- Generate a public/private key pair.

Procedure

1. Log in to the first host as the root user.
2. Copy your public key to each host that you want to access, including the host on which you execute the command, using both the front-end and the back-end FQDNs.

```
# ssh-copy-id -i <location>/<keyname>.pub <user>@<hostname>
```

Enter the password for **<user>@<hostname>** when prompted.

**WARNING**

Make sure that you use the file that ends in **.pub**. Never share your private key. Possession of your private key allows someone else to impersonate you on any system that has your public key.

For example, if you are logged in as the root user on **server1.example.com**, you would run the following commands:

```
# ssh-copy-id -i <location>/<keyname>.pub root@server1front.example.com
# ssh-copy-id -i <location>/<keyname>.pub root@server2front.example.com
# ssh-copy-id -i <location>/<keyname>.pub root@server3front.example.com
# ssh-copy-id -i <location>/<keyname>.pub root@server1back.example.com
# ssh-copy-id -i <location>/<keyname>.pub root@server2back.example.com
# ssh-copy-id -i <location>/<keyname>.pub root@server3back.example.com
```

CHAPTER 5. CONFIGURING A SINGLE NODE RHHI FOR VIRTUALIZATION DEPLOYMENT

5.1. CONFIGURING RED HAT GLUSTER STORAGE ON A SINGLE NODE



IMPORTANT

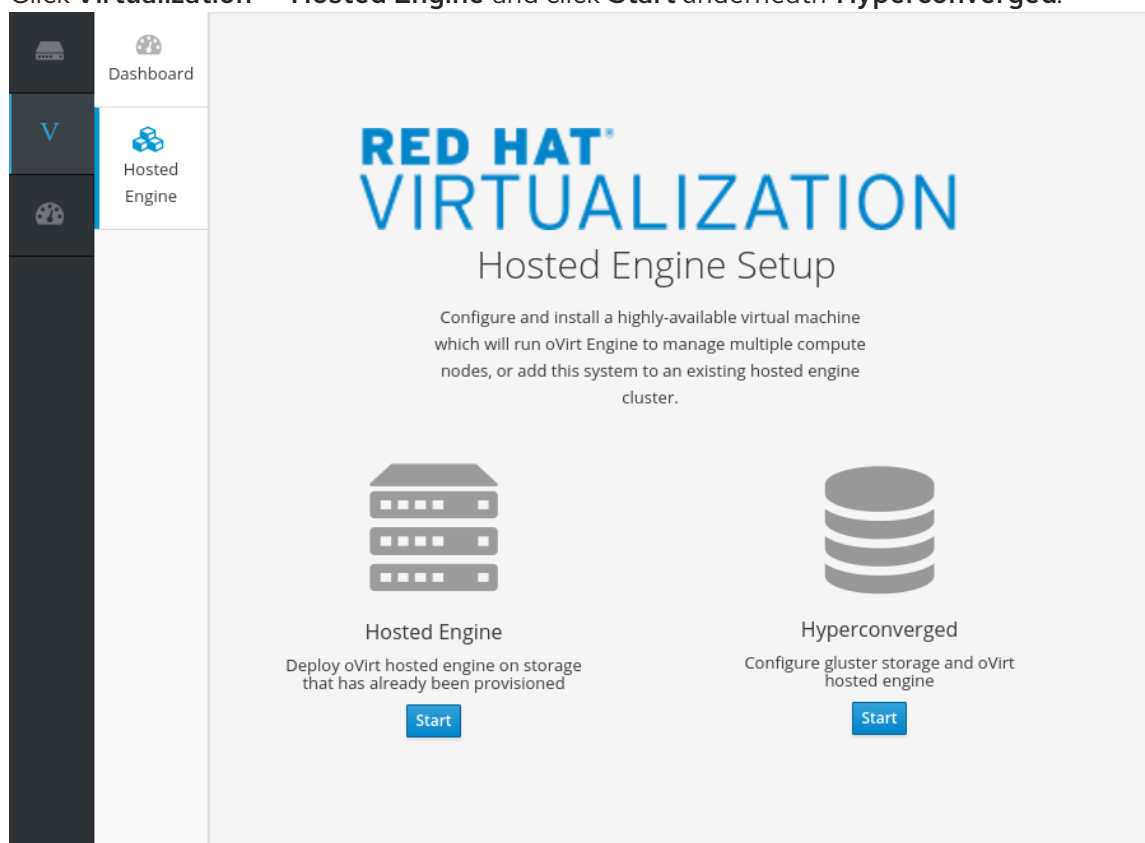
Ensure that disks specified as part of this deployment process do not have any partitions or labels.

1. Log into the Web Console

Browse to the the Web Console management interface of the first hyperconverged host, for example, <https://node1.example.com:9090/>, and log in with the credentials you created in the previous section.

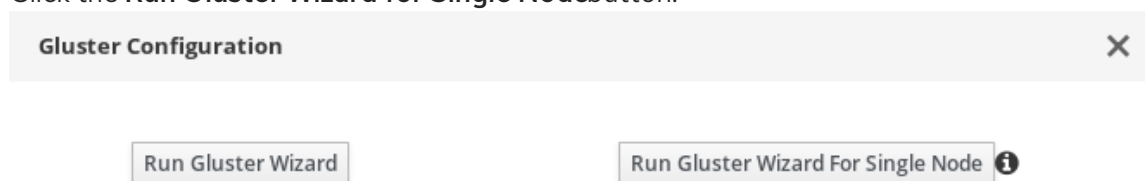
2. Start the deployment wizard

- a. Click **Virtualization** → **Hosted Engine** and click **Start** underneath **Hyperconverged**.



The *Gluster Configuration* window opens.

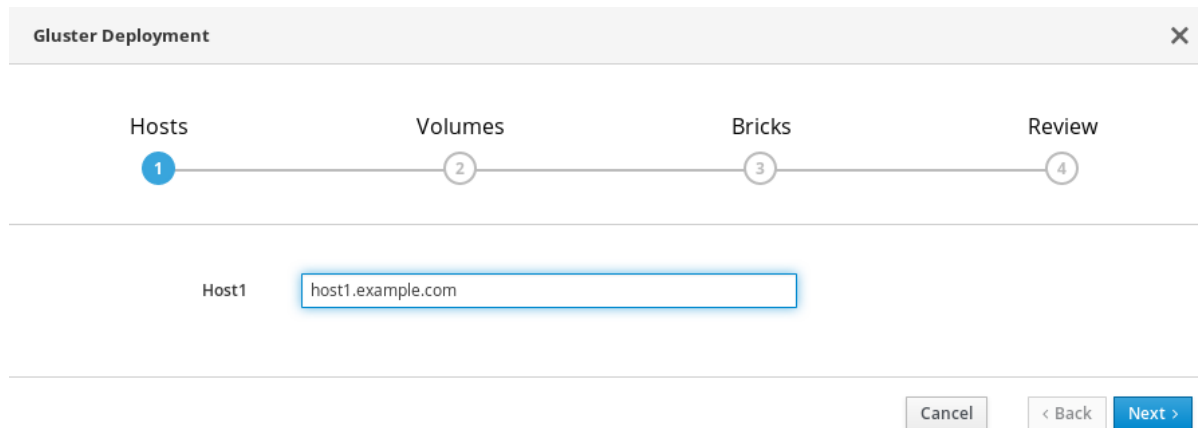
- b. Click the **Run Gluster Wizard for Single Node** button.



The *Gluster Deployment* window opens in single node mode.

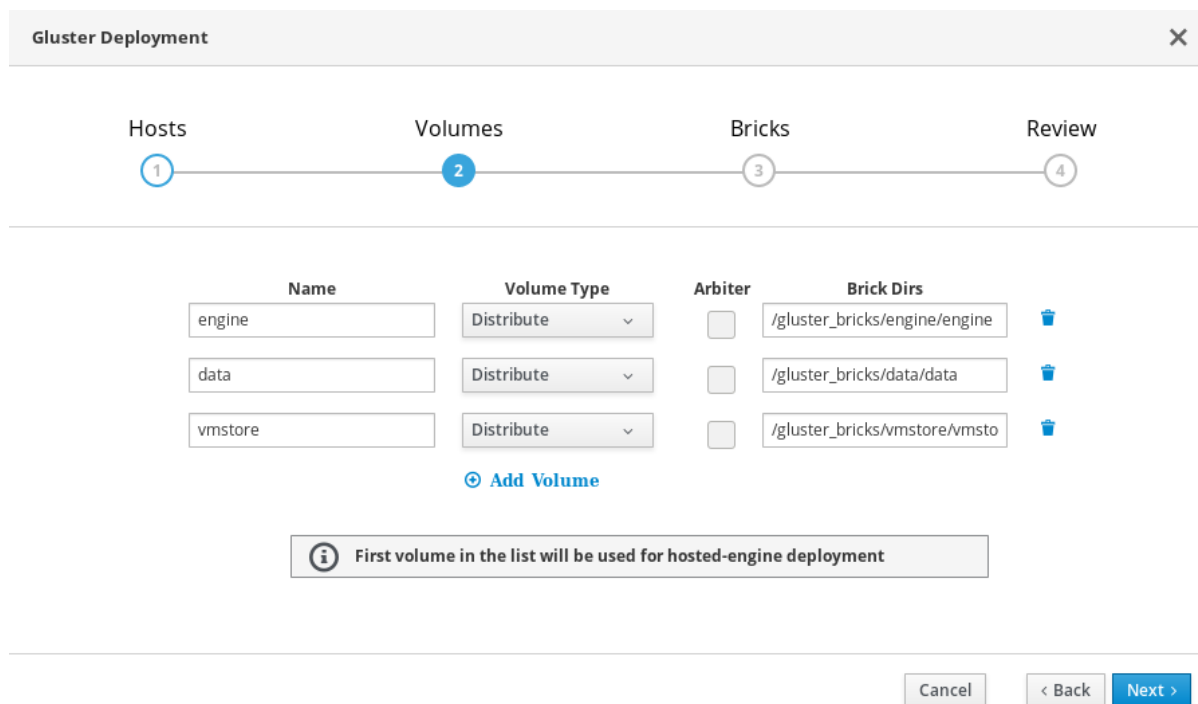
3. Specify hyperconverged host

Specify the back-end FQDN on the storage network of the hyperconverged host and click **Next**.



4. Specify volumes

Specify the volumes to create.



Name

Specify the name of the volume to be created.

Volume Type

Specify a **Distribute** volume type. Only distributed volumes are supported for single node deployments.

Brick Dirs

The directory that contains this volume's bricks.

Add Volume

To add more volumes, click the **Add Volume** option and it will create a blank entry. Specify the name of the volume to be added and if arbiter volume is required, check the arbiter check box. It is recommended to use the brick path as `/gluster_bricks/<volname>/<volname>`.

5. Specify bricks

Specify the bricks to create.

Gluster Deployment
✕

Hosts Volumes Bricks Review

1 ————— 2 ————— 3 ————— 4

Raid Information ⓘ

Raid Type:

Stripe Size(KB):

Data Disk Count:

Brick Configuration

Select Host:

LV Name	Device Name	Size(GB)	Thinp	Mount Point	Enable Dedupe & Compression
<input type="text" value="engine"/>	<input type="text" value="sdb"/>	<input type="text" value="100"/>	<input type="checkbox"/>	<input type="text" value="/gluster_bricks/engine"/>	<input type="checkbox"/>
<input type="text" value="data"/>	<input type="text" value="sdb"/>	<input type="text" value="500"/>	<input checked="" type="checkbox"/>	<input type="text" value="/gluster_bricks/data"/>	<input type="checkbox"/>
<input type="text" value="vmstore"/>	<input type="text" value="sdb"/>	<input type="text" value="500"/>	<input checked="" type="checkbox"/>	<input type="text" value="/gluster_bricks/vmstore"/>	<input type="checkbox"/>

Configure LV Cache

ⓘ **Arbiter bricks will be created on the third host in the host list.**

RAID

Specify the RAID configuration to use. This should match the RAID configuration of your host. Supported values are **raid5**, **raid6**, and **jbod**. Setting this option ensures that your storage is correctly tuned for your RAID configuration.

Stripe Size

Specify the RAID stripe size in KB. Do not enter units, only the number. This can be ignored for **jbod** configurations.

Disk Count

Specify the number of data disks in a RAID volume. This can be ignored for **jbod** configurations.

LV Name

The name of the logical volume to be created. This is pre-filled with the name that you specified on the previous page of the wizard.

Device

Specify the raw device you want to use. Red Hat recommends an unpartitioned device.

Size

Specify the size of the logical volume to create in GB. Do not enter units, only the number. This number should be the same for all bricks in a replicated set. Arbiter bricks can be smaller than other bricks in their replication set.

Mount Point

The mount point for the logical volume. This is pre-filled with the brick directory that you specified on the previous page of the wizard.

Thinp

This option is enabled and volumes are thinly provisioned by default, except for the **engine** volume, which must be thickly provisioned.

Enable Dedupe & Compression

Specify whether to provision the volume using VDO for compression and deduplication at deployment time.

Logical Size (GB)

Specify the logical size of the VDO volume. This can be up to 10 times the size of the physical volume, with an absolute maximum logical size of 4 PB.

Configure LV Cache

Optionally, check this checkbox to configure a small, fast SSD device as a logical volume cache for a larger, slower logical volume. Add the device path to the **SSD** field, the size to the **LV Size (GB)** field, and set the **Cache Mode** used by the device.



WARNING

To avoid data loss when using write-back mode, Red Hat recommends using two separate SSD/NVMe devices. Configuring the two devices in a RAID-1 configuration (via software or hardware), significantly reduces the potential of data loss from lost writes.

For further information about lvmcache configuration, see [Red Hat Enterprise Linux 7 LVM Administration](#).

a. (Optional) If your system has multipath devices, additional configuration is required.

i. To use multipath devices

If you want to use multipath devices in your RHHI for Virtualization deployment, use multipath WWIDs to specify the device. For example, use **/dev/mapper/3600508b1001caab032303683327a6a2e** instead of **/dev/sdb**.

ii. To disable multipath device use

If multipath devices exist in your environment, but you do not want to use them for your RHHI for Virtualization deployment, blacklist the devices.

A. Create a custom multipath configuration file.

```
# mkdir /etc/multipath/conf.d
# touch /etc/multipath/conf.d/99-custom-multipath.conf
```

- B. Add the following content to the file, replacing **<device>** with the name of the device to blacklist:

```
blacklist {
  devnode "<device>"
}
```

For example, to blacklist the **/dev/sdb** device, add the following:

```
blacklist {
  devnode "sdb"
}
```

- C. Restart multipathd.

```
# systemctl restart multipathd
```

- D. Verify that your disks no longer have multipath names by using the **lsblk** command. If multipath names are still present, reboot hosts.

6. Review and edit configuration

Review the contents of the generated configuration file and click **Edit** to modify the file, and **Save** to keep your changes.

Click **Deploy** when you are satisfied with the configuration file.

Gluster Deployment
✕

Hosts Volumes Bricks Review

1 ————— 2 ————— 3 ————— 4

Generated Ansible inventory : /etc/ansible/hc_wizard_inventory.yml
✎ Edit ↻ Reload

```

hc_nodes:
hosts:
  host1.example.com:
    gluster_infra_volume_groups:
      - vgroup: gluster_vg_sdb
        pvname: /dev/sdb
    gluster_infra_mount_devices:
      - path: /gluster_bricks/engine
        lvname: gluster_lv_engine
        vgroup: gluster_vg_sdb
      - path: /gluster_bricks/data
        lvname: gluster_lv_data
        vgroup: gluster_vg_sdb
      - path: /gluster_bricks/...
          
```

Enable Debug Logging

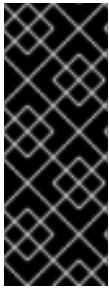
Cancel
< Back
Deploy

7. Wait for deployment to complete

You can watch the deployment process in the text field.

The window displays **Successfully deployed gluster** when complete.

Click **Continue to Hosted Engine Deployment** and continue the deployment process with the instructions in [Section 5.2, “Deploy the Hosted Engine on a single node using the Web Console”](#).



IMPORTANT

If deployment fails, click **Clean up** to remove any potentially incorrect changes to the system.

When cleanup is complete, click the **Redeploy** button. This returns you to the *Review and edit configuration* tab so that you can correct any issues in the generated configuration file before reattempting deployment.

5.2. DEPLOY THE HOSTED ENGINE ON A SINGLE NODE USING THE WEB CONSOLE

This section shows you how to deploy the Hosted Engine on a single node using the Web Console. Following this process results in Red Hat Virtualization Manager running in a virtual machine on your node, and managing that virtual machine. It also configures a Default cluster consisting only of that node, and enables Red Hat Gluster Storage functionality and the **virtual-host** *tuned* performance profile for the cluster of one.

Prerequisites

- The RHV-M Appliance is installed during the deployment process; however, if required, you can install it on the deployment host before starting the installation:

```
# yum install rhvm-appliance
```

Manually installing the Manager virtual machine is not supported.

- [Configure Red Hat Gluster Storage on a single node](#)
- Gather the information you need for Hosted Engine deployment
Have the following information ready before you start the deployment process.
 - IP address for a pingable gateway to the hyperconverged host
 - IP address of the front-end management network
 - Fully-qualified domain name (FQDN) for the Hosted Engine virtual machine
 - MAC address that resolves to the static FQDN and IP address of the Hosted Engine

Procedure

1. Open the Hosted Engine Deployment wizard

If you continued directly from the end of [Configure Red Hat Gluster Storage on a single node](#), the wizard is already open.

Otherwise:

- a. Click **Virtualization → Hosted Engine**.

- b. Click **Start** underneath **Hyperconverged**.
- c. Click **Use existing configuration**.



IMPORTANT

If the previous deployment attempt failed, click **Clean up** instead of **Use existing configuration** to discard the previous attempt and start from scratch.

2. Specify virtual machine details

Hosted Engine Deployment
✕

VM Engine Prepare VM Storage Finish

① ————— ② ————— ③ ————— ④ ————— ⑤

VM Settings

Engine VM FQDN	<input type="text" value="engine.example.com"/>
MAC Address	<input type="text" value="00:xx:xx:xx:xx:xx"/>
Network Configuration	<input type="text" value="DHCP"/>
Bridge Interface	<input type="text" value="ens2f0"/>
Root Password	<input type="password" value="••••••"/>
Root SSH Access	<input type="text" value="Yes"/>
Number of Virtual CPUs	<input type="text" value="4"/>
Memory Size (MiB)	<input type="text" value="16348"/> 62,047MB available

> Advanced

- a. Enter the following details:

Engine VM FQDN

The fully qualified domain name to be used for the Hosted Engine virtual machine, for example, **engine.example.com**.

MAC Address

The MAC address associated with the **Engine VM FQDN**.



IMPORTANT

The pre-populated MAC address must be replaced.

Network Configuration

Choose either DHCP or Static from the Network Configuration drop-down list.

- If you choose **DHCP**, you must have a DHCP reservation for the Hosted Engine virtual machine so that its host name resolves to the address received from DHCP. Specify its MAC address in the MAC Address field.
- If you choose **Static**, enter the following details:
 - **VM IP Address** - The IP address must belong to the same subnet as the host. For example, if the host is in 10.1.1.0/24, the Hosted Engine virtual machine's IP must be in the same subnet range (10.1.1.1-254/24).
 - **Gateway Address**
 - **DNS Servers**

Bridge Interface

Select the Bridge Interface from the drop-down list.

Root password

The root password to be used for the Hosted Engine virtual machine.

Root SSH Access

Specify whether to allow Root SSH Access. The default value of Root SSH Access is set to **Yes**.

Number of Virtual CPUs

Enter the Number of Virtual CPUs for the virtual machine.

Memory Size (MiB)

Enter the Memory Size (MiB). The available memory is displayed next to the input field.



NOTE

Red Hat recommends to retain the values of Root SSH Access, Number of Virtual CPUs and Memory Size to default values.

- Optionally expand the Advanced fields.

Advanced

Root SSH Public Key

Edit Hosts File

Bridge Name

Gateway Address

Host FQDN

Apply OpenSCAP profile

Network Test

Cancel < Back Next >

Root SSH Public Key

Enter a Root SSH Public Key to use for root access to the Hosted Engine virtual machine.

Edit Hosts File

Select or clear the Edit Hosts File check box to specify whether to add entries for the Hosted Engine virtual machine and the base host to the virtual machine's `/etc/hosts` file. You must ensure that the host names are resolvable.

Bridge Name

Change the management Bridge Name, or accept the default `ovirtmgmt`.

Gateway Address

Enter the Gateway Address for the management bridge.

Host FQDN

Enter the Host FQDN of the first host to add to the Manager. This is the front-end FQDN of the base host you are running the deployment on.

Network Test

If you have a static network configuration or are using an isolated environment with addresses defined in `/etc/hosts`, set Network Test to **Ping**.

- c. Click **Next**. Your FQDNs are validated before the next screen appears.

3. Specify virtualization management details

- a. Enter the password to be used by the **admin** account in the Administration Portal. You can also specify an email address for notifications, which requires further configuration after deployment; see [Chapter 8, Post-deployment configuration suggestions](#).

Hosted Engine Deployment ✕

VM Engine Prepare VM Storage Finish

① ——— ② ——— ③ ——— ④ ——— ⑤

Engine Credentials

Admin Portal Password

Notification Settings

Server Name

Server Port Number

Sender E-Mail Address

Recipient E-Mail Addresses

b. Click **Next**.

4. Review virtual machine configuration

a. Ensure that the details listed on this tab are correct. Click **Back** to correct any incorrect information.

Hosted Engine Deployment ✕

VM Engine Prepare VM Storage Finish

① ② ③ ④ ⑤

Please review the configuration. Once you click the 'Prepare VM' button, a local virtual machine will be started and used to prepare the management services and their data. This operation may take some time depending on your hardware.

▼ VM

Engine FQDN: engine.example.com
MAC Address: 00:xx:xx:xx:xx:xx
Network Configuration: Static
VM IP Address: 192.168.0.104
Gateway Address: 192.168.0.104
DNS Servers: 192.168.0.254
Root User SSH Access: yes
Number of Virtual CPUs: 4
Memory Size (MiB): 16348
Root User SSH Public Key: (None)
Add Lines to /etc/hosts: yes
Bridge Name: ovirtmgmt

▼ Engine


SMTP Server Name: localhost
SMTP Server Port Number: 25
Sender E-Mail Address: root@localhost

- b. Click **Prepare VM**.
- c. Wait for virtual machine preparation to complete.

Hosted Engine Deployment ✕

VM Engine Prepare VM Storage Finish

① ——— ② ——— ③ ——— ④ ——— ⑤



Execution completed successfully. Please proceed to the next step.

If preparation does not occur successfully, see [Viewing Hosted Engine deployment errors](#).

- d. Click **Next**.
5. **Specify storage for the Hosted Engine virtual machine**
 - a. Specify the back-end address and location of the **engine** volume.

Hosted Engine Deployment
✕

VM Engine Prepare VM Storage Finish

① ② ③ ④ ⑤

Please configure the storage domain that will be used to host the disk for the management VM. Please note that the management VM needs to be responsive and reliable enough to be able to manage all resources of your deployment, so highly available storage is preferred.

Storage Settings

Storage Type	<input type="text" value="Gluster"/>
Storage Connection	<input type="text" value="host1.example.com.:/engine"/>
Mount Options	<input type="text"/>

> Advanced

b. Click **Next**.

6. Finalize Hosted Engine deployment

a. Review your deployment details and verify that they are correct.



NOTE

The responses you provided during configuration are saved to an answer file to help you reinstall the hosted engine if necessary. The answer file is created at **/etc/ovirt-hosted-engine/answers.conf** by default. This file should not be modified manually without assistance from Red Hat Support.

Hosted Engine Deployment ✕

1 VM 2 Engine 3 Prepare VM 4 Storage 5 Finish

Please review the configuration. Once you click the 'Finish Deployment' button, the management VM will be transferred to the configured storage and the configuration of your hosted engine cluster will be finalized. You will be able to use your hosted engine once this step finishes.

▼ Storage

- Storage Type:** glusterfs
- Storage Domain Connection:** host1.example.com.:engine
- Mount Options:**
- Disk Size (GiB):** 58

b. Click **Finish Deployment**.

7. **Wait for deployment to complete**


This can take some time, depending on your configuration details.

The window displays the following when complete.

Hosted Engine Deployment ✕

VM Engine Prepare VM Storage Finish

① ——— ② ——— ③ ——— ④ ——— ⑤



Hosted engine deployment complete!

Close



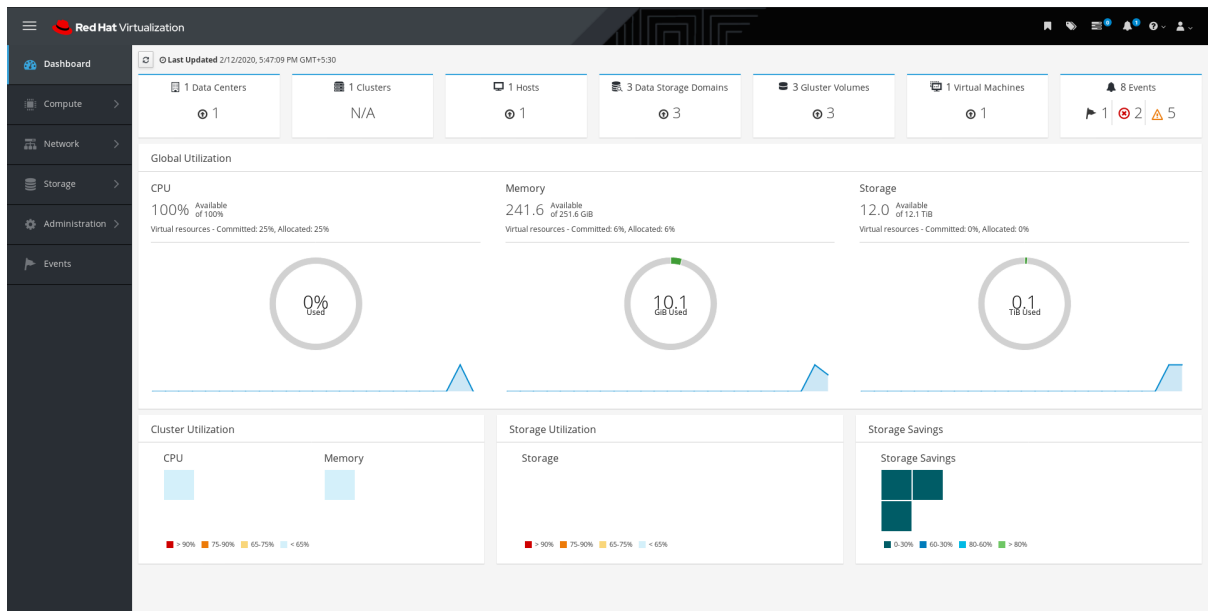
IMPORTANT

If deployment does not complete successfully, see [Viewing Hosted Engine deployment errors](#).

Click **Close**.

8. Verify hosted engine deployment

Browse to the Administration Portal (for example, <http://engine.example.com/ovirt-engine>) and verify that you can log in using the administrative credentials you configured earlier. Click **Dashboard** and look for your hosts, storage domains, and virtual machines.



Next steps

- [Log in to the Administration Portal to complete configuration](#) .

CHAPTER 6. CONFIGURE RED HAT GLUSTER STORAGE AS A RED HAT VIRTUALIZATION STORAGE DOMAIN

The hosted engine storage domain is imported automatically, but other storage domains must be added to be used.

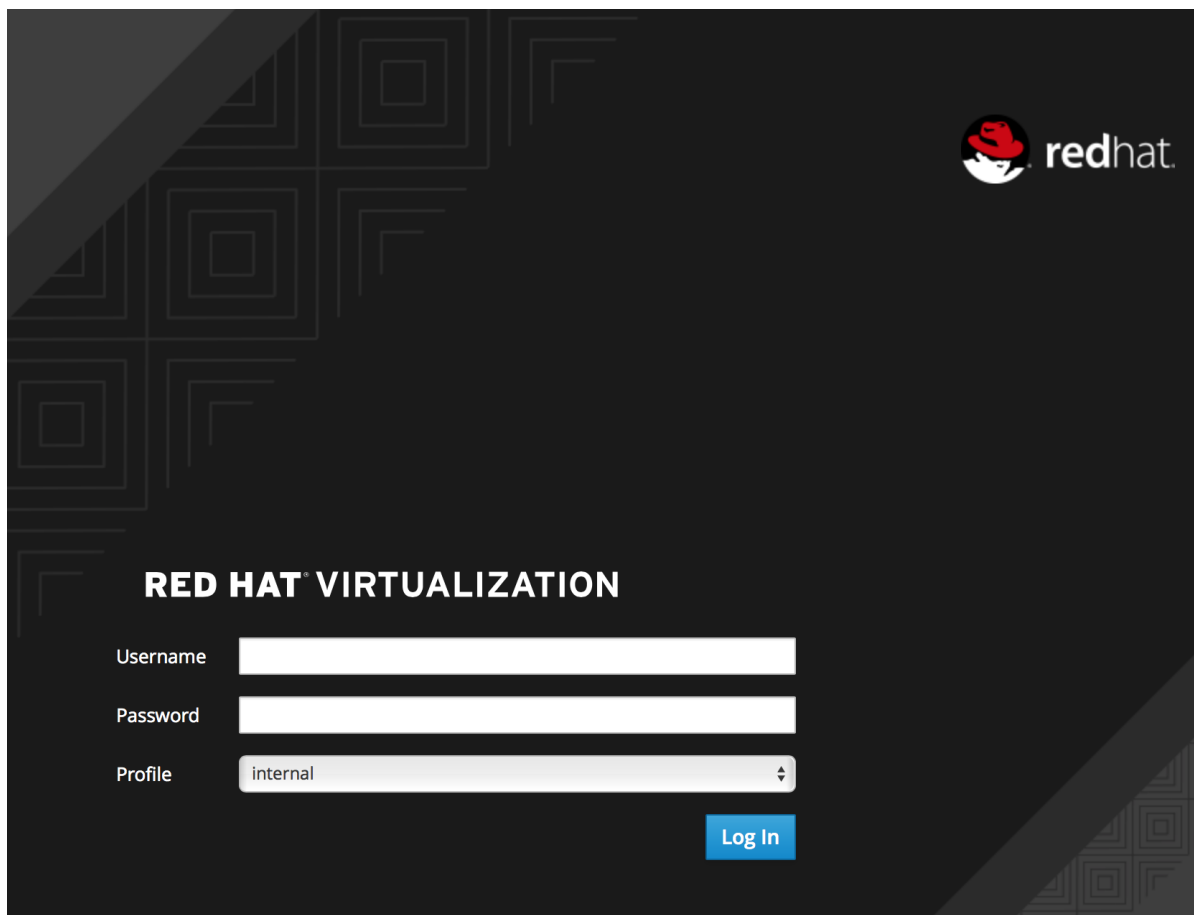
1. Click the **Storage** tab and then click **New Domain**.
2. Select **GlusterFS** as the **Storage Type** and provide a **Name** for the domain.
3. Check the **Use managed gluster volume** option and select the volume to use.
4. Click **OK** to save.

CHAPTER 7. VERIFY YOUR DEPLOYMENT

After deployment is complete, verify that your deployment has completed successfully.

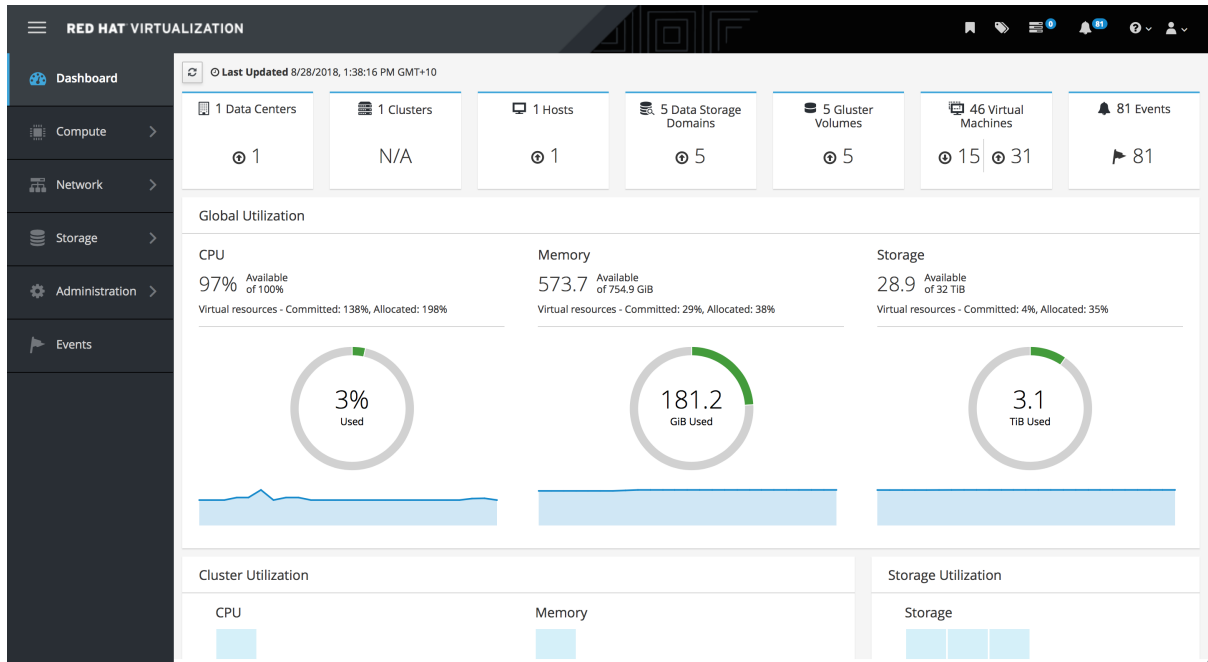
1. Browse to the Administration Portal, for example, <http://engine.example.com/ovirt-engine>.

Administration Console Login

The image shows the login interface for the Red Hat Virtualization Administration Console. The background is dark with a subtle geometric pattern. In the top right corner, the Red Hat logo and the word "redhat." are visible. The main heading "RED HAT VIRTUALIZATION" is centered. Below the heading, there are three input fields: "Username" with an empty text box, "Password" with an empty text box, and "Profile" with a dropdown menu showing "internal". A blue "Log In" button is positioned to the right of the input fields.

2. Log in using the administrative credentials added during hosted engine deployment. When login is successful, the Dashboard appears.

Administration Console Dashboard



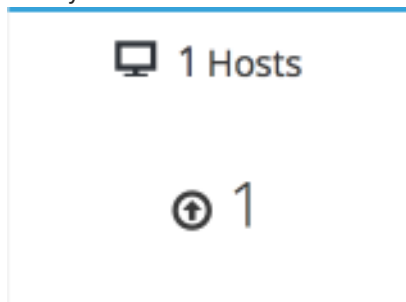
- Verify that your cluster is available.

Administration Console Dashboard - Clusters

1 Clusters

1

- Verify that one host is available.



- Click **Compute** → **Hosts**.
 - Verify that your host is listed with a **Status** of **Up**.
- Verify that all storage domains are available.
 - Click **Storage** → **Domains**.
 - Verify that the **Active** icon is shown in the first column.

Administration Console - Storage Domains

Storage » Storage Domains

Storage: ✕ ☆ ▾ Q

[New Domain](#) [Import Domain](#) [Manage Domain](#) [Remove](#) ⋮

1 - 5 < >

	Domain Name	Comment	Domain Type	Storage Type	Format	Cross Data Center Status	Total Space	Free Space
▲	data		Data	GlusterFS	V4	Active	4998 GiB	4563 GiB
▲ 🏠	hosted_storage		Data (Master)	GlusterFS	V4	Active	99 GiB	88 GiB
▲	vmstore		Data	GlusterFS	V4	Active	9998 GiB	9284 GiB

CHAPTER 8. POST-DEPLOYMENT CONFIGURATION SUGGESTIONS

Depending on your requirements, you may want to perform some additional configuration on your newly deployed Red Hat Hyperconverged Infrastructure for Virtualization. This section contains suggested next steps for additional configuration.

Details on these processes are available in [Maintaining Red Hat Hyperconverged Infrastructure for Virtualization](#).

8.1. CONFIGURE NOTIFICATIONS

See [Configuring Event Notifications in the Administration Portal](#) to configure email notifications.

8.2. CONFIGURE FENCING FOR HIGH AVAILABILITY

Fencing allows a cluster to enforce performance and availability policies and react to unexpected host failures by automatically rebooting hyperconverged hosts.

See [Configure High Availability using fencing policies](#) for further information.

8.3. CONFIGURE BACKUP AND RECOVERY OPTIONS

Red Hat recommends configuring at least basic disaster recovery capabilities on all production deployments.

See [Configuring backup and recovery options](#) in [Maintaining Red Hat Hyperconverged Infrastructure for Virtualization](#) for more information.

CHAPTER 9. NEXT STEPS

- Learn to create and manage Red Hat Gluster Storage using the Administration Portal in [Managing Red Hat Gluster Storage using the RHV Administration Portal](#) .
- Learn to create and manage virtual machines in the Red Hat Virtualization [Virtual Machine Management Guide](#).
- Review the [RHHI for Virtualization documentation](#) on the Red Hat Customer Portal.

PART I. REFERENCE MATERIAL

APPENDIX A. GLOSSARY OF TERMS

A.1. VIRTUALIZATION TERMS

Administration Portal

A web user interface provided by Red Hat Virtualization Manager, based on the oVirt engine web user interface. It allows administrators to manage and monitor cluster resources like networks, storage domains, and virtual machine templates.

Hosted Engine

The instance of Red Hat Virtualization Manager that manages RHHI for Virtualization.

Hosted Engine virtual machine

The virtual machine that acts as Red Hat Virtualization Manager. The Hosted Engine virtual machine runs on a virtualization host that is managed by the instance of Red Hat Virtualization Manager that is running on the Hosted Engine virtual machine.

Manager node

A virtualization host that runs Red Hat Virtualization Manager directly, rather than running it in a Hosted Engine virtual machine.

Red Hat Enterprise Linux host

A physical machine installed with Red Hat Enterprise Linux plus additional packages to provide the same capabilities as a Red Hat Virtualization host. This type of host is not supported for use with RHHI for Virtualization.

Red Hat Virtualization

An operating system and management interface for virtualizing resources, processes, and applications for Linux and Microsoft Windows workloads.

Red Hat Virtualization host

A physical machine installed with Red Hat Virtualization that provides the physical resources to support the virtualization of resources, processes, and applications for Linux and Microsoft Windows workloads. This is the only type of host supported with RHHI for Virtualization.

Red Hat Virtualization Manager

A server that runs the management and monitoring capabilities of Red Hat Virtualization.

Self-Hosted Engine node

A virtualization host that contains the Hosted Engine virtual machine. All hosts in a RHHI for Virtualization deployment are capable of becoming Self-Hosted Engine nodes, but there is only one Self-Hosted Engine node at a time.

storage domain

A named collection of images, templates, snapshots, and metadata. A storage domain can be comprised of block devices or file systems. Storage domains are attached to data centers in order to provide access to the collection of images, templates, and so on to hosts in the data center.

virtualization host

A physical machine with the ability to virtualize physical resources, processes, and applications for client access.

VM Portal

A web user interface provided by Red Hat Virtualization Manager. It allows users to manage and monitor virtual machines.

A.2. STORAGE TERMS

brick

An exported directory on a server in a trusted storage pool.

cache logical volume

A small, fast logical volume used to improve the performance of a large, slow logical volume.

geo-replication

One way asynchronous replication of data from a source Gluster volume to a target volume. Geo-replication works across local and wide area networks as well as the Internet. The target volume can be a Gluster volume in a different trusted storage pool, or another type of storage.

gluster volume

A logical group of bricks that can be configured to distribute, replicate, or disperse data according to workload requirements.

logical volume management (LVM)

A method of combining physical disks into larger virtual partitions. Physical volumes are placed in volume groups to form a pool of storage that can be divided into logical volumes as needed.

Red Hat Gluster Storage

An operating system based on Red Hat Enterprise Linux with additional packages that provide support for distributed, software-defined storage.

source volume

The Gluster volume that data is being copied from during geo-replication.

storage host

A physical machine that provides storage for client access.

target volume

The Gluster volume or other storage volume that data is being copied to during geo-replication.

thin provisioning

Provisioning storage such that only the space that is required is allocated at creation time, with further space being allocated dynamically according to need over time.

thick provisioning

Provisioning storage such that all space is allocated at creation time, regardless of whether that space is required immediately.

trusted storage pool

A group of Red Hat Gluster Storage servers that recognise each other as trusted peers.

A.3. HYPERCONVERGED INFRASTRUCTURE TERMS

Red Hat Hyperconverged Infrastructure (RHHI) for Virtualization

RHHI for Virtualization is a single product that provides both virtual compute and virtual storage resources. Red Hat Virtualization and Red Hat Gluster Storage are installed in a converged configuration, where the services of both products are available on each physical machine in a cluster.

hyperconverged host

A physical machine that provides physical storage, which is virtualized and consumed by virtualized processes and applications run on the same host. All hosts installed with RHHI for Virtualization are hyperconverged hosts.

Web Console

The web user interface for deploying, managing, and monitoring RHHI for Virtualization. The Web Console is provided by the the Web Console service and plugins for Red Hat Virtualization Manager.

